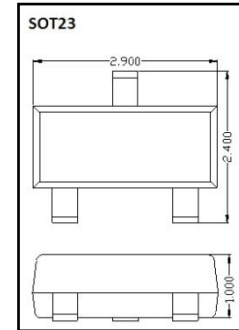


## Schottky Barrier DIODE / DATA SHEET

## BAT54–BAT54S

- ◇ High Conductance
- ◇ Low Current Leakage
- ◇ Small Outline Surface Mount Package
- ◇ RoHS compliant / Green EMC



MCC Catalog Number	Device Marking		Type	Pin Configuration See page 2
	1	2		
BAT54	KL1	L4/L4P	Single	Figure1
BAT54A	KL2	L42	Dual	Figure2
BAT54C	KL3	L43	Dual	Figure3
BAT54S	KL4	L44	Dual	Figure4

## MAXIMUM RATINGS (Ta = 25 °C)

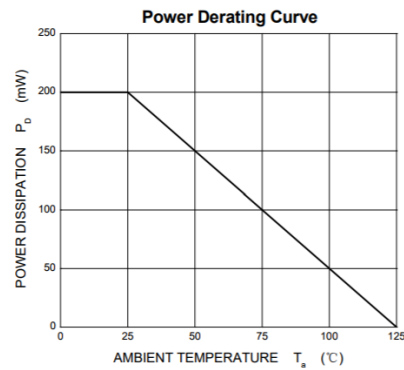
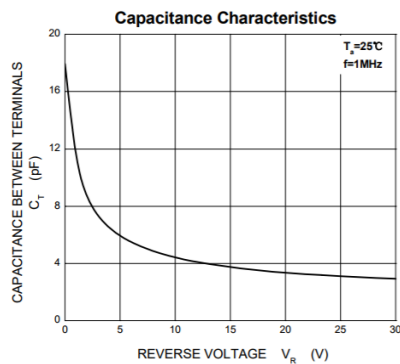
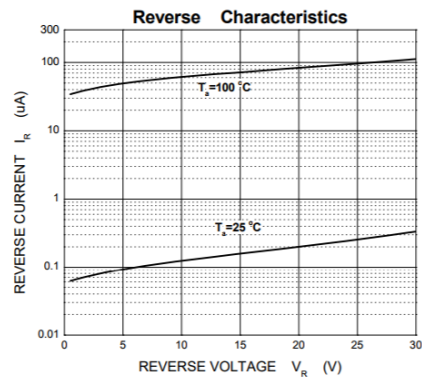
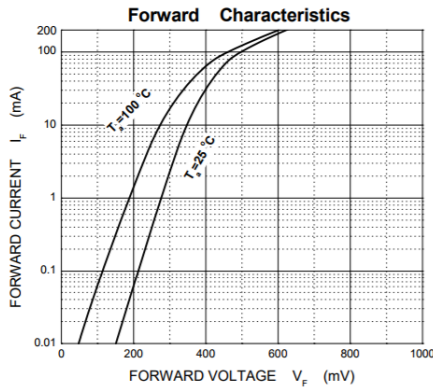
Symbol	Parameter	Value	Units
V <sub>R</sub>	Reverse Voltage	30	V
I <sub>F</sub>	Forward Continuous Current	200	mA
P <sub>tot</sub>	Power Dissipation	200	mW
T <sub>J</sub>	Operating Junction Temperature Range	-55 to 125	°C
I <sub>FSM</sub>	Peak Forward Surge Current (t=1S.NON-Repetitive)	1	A
T <sub>stg</sub>	Storage Temperature Range	-55 to 150	°C
T <sub>J</sub>	Soldering temperature during	260	°C
R <sub>J</sub>	Thermal Resistance Junction to Ambient	500	°C/W

## ELECTRICAL CHARACTERISTICS (Ta = 25 °C)

Symbol	Parameter	Test Conditions	Min	Max	Units
V <sub>F</sub>	Forward Voltage	I <sub>F</sub> =0.1mA		0.24	V
		I <sub>F</sub> =1mA		0.32	
		I <sub>F</sub> =10mA		0.40	
		I <sub>F</sub> =30mA		0.50	
		I <sub>F</sub> =100mA		1.00	
V <sub>R</sub>	Reverse breakdown voltage	I <sub>R</sub> =100uA	30		V
I <sub>R</sub>	Reverse voltage leakage current	V <sub>R</sub> =25V		10	uA
C <sub>J</sub>	Typical Junction Capacitance	V <sub>R</sub> =1V, f=1.0MHz		10	pF
T <sub>rr</sub>	Reverse recovery time	I <sub>F</sub> =I <sub>R</sub> =10mA, I <sub>rr</sub> =0.1x I <sub>R</sub>		5	nS

		$R_L=100\Omega$		
--	--	-----------------	--	--

**Typical Characteristics**



**Pin Configuration - Top View**

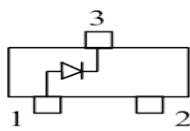


Figure 1  
BAT54

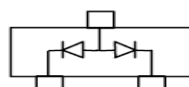


Figure 2  
BAT54A

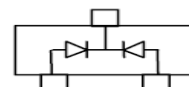


Figure 3  
BAT54C

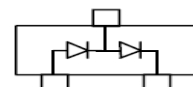
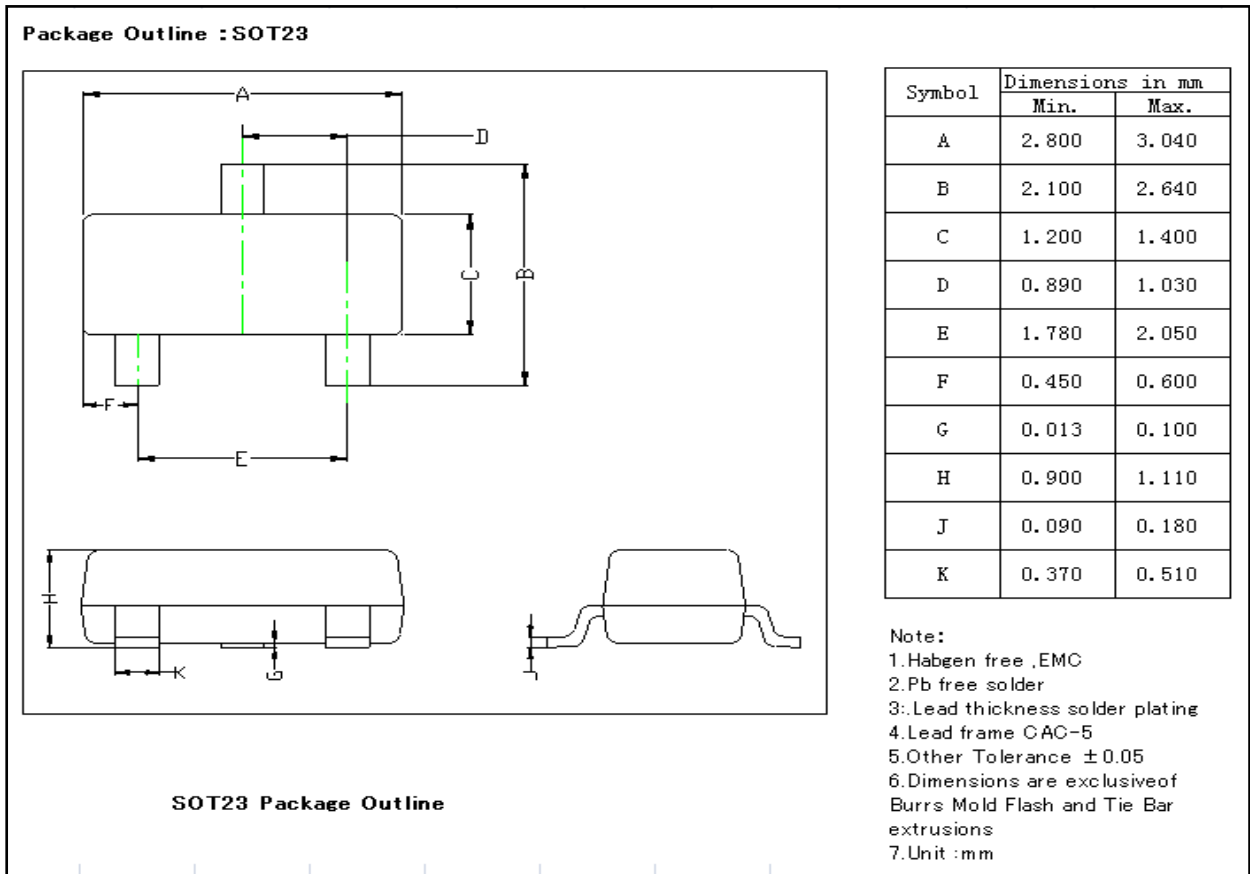


Figure 4  
BAT54S

**ORDERING INFORMATION**

Device	Package	Shipping	Tape wide	Emboss pitch	Tape specification	Notes
BAT54-BAT54S	SOT23	Tape & Reel 3000pcs /7" Reel	8mm	4mm	Conductive	

## PACKAGE DIMENSIONS



## X-ON Electronics

Largest Supplier of Electrical and Electronic Components

*Click to view similar products for [Schottky Diodes & Rectifiers](#) category:*

*Click to view products by [amsem](#) manufacturer:*

Other Similar products are found below :

[MA4E2039](#) [MMBD301M3T5G](#) [RB160M-50TR](#) [D83C](#) [BAS16E6433HTMA1](#) [BAS 3010S-02LRH E6327](#) [BAT 54-02LRH E6327](#)  
[NRVBAF360T3G](#) [NSR05F40QNXT5G](#) [NTE555](#) [JANS1N6640](#) [SS3003CH-TL-E](#) [GA01SHT18](#) [CRS10I30A\(TE85L,QM](#) [MBRA140TRPBF](#)  
[MBRB30H30CT-1G](#) [BAT 15-04R E6152](#) [JANTX1N5712-1](#) [DMJ3940-000](#) [SB007-03C-TB-E](#) [NRVBB20100CTT4G](#) [NRVBM120LT1G](#)  
[NTSB30U100CT-1G](#) [CRG04\(T5L,TEMQ\)](#) [ACDBA1100LR-HF](#) [ACDBA1200-HF](#) [ACDBA240-HF](#) [ACDBA3100-HF](#) [CDBQC0530L-HF](#)  
[ACDBA260LR-HF](#) [ACDBA1100-HF](#) [10BQ015-M3/5BT](#) [NRVBM120ET1G](#) [VSSB410S-M3/5BT](#) [1N5819T-G](#) [PDS1040Q-13](#) [B160BQ-13-F](#)  
[SDM05U20CSP-7](#) [BAS 70-07 E6433](#) [B140S1F-7](#) [HSM560Je3/TR13](#) [DDB2265-000](#) [ZHCS506QTA](#) [HSM190Je3/TR13](#) [B330AF-13](#)  
[ACDBUC0230-HF](#) [SDM1U100S1F-7](#) [MBR10200CTF-G1](#) [CDLL5712](#) [DMF2822-000](#)