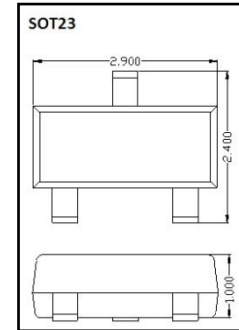


Schottky Barrier DIODE / DATA SHEET

BAT54–BAT54S

- ◇ High Conductance
- ◇ Low Current Leakage
- ◇ Small Outline Surface Mount Package
- ◇ RoHS compliant / Green EMC

MCC Catalog Number	Device Marking		Type	Pin Configuration See page 2
	1	2		
BAT54	KL1	L4/L4P	Single	Figure1
BAT54A	KL2	L42	Dual	Figure2
BAT54C	KL3	L43	Dual	Figure3
BAT54S	KL4	L44	Dual	Figure4



MAXIMUM RATINGS (Ta = 25 °C)

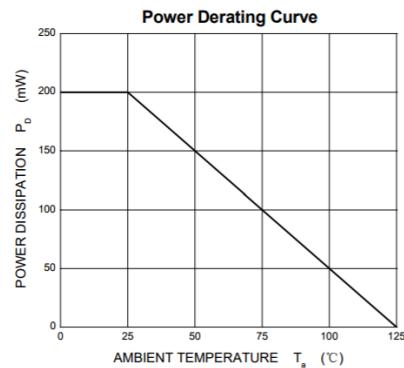
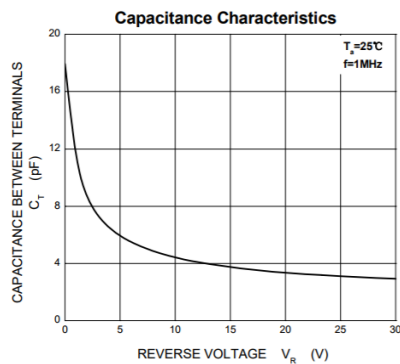
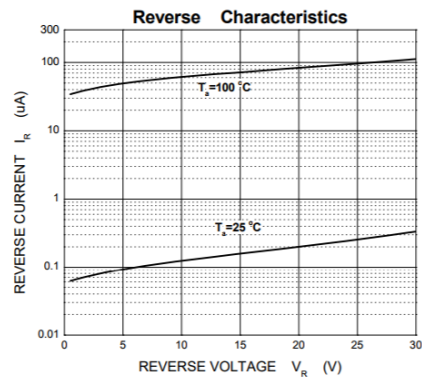
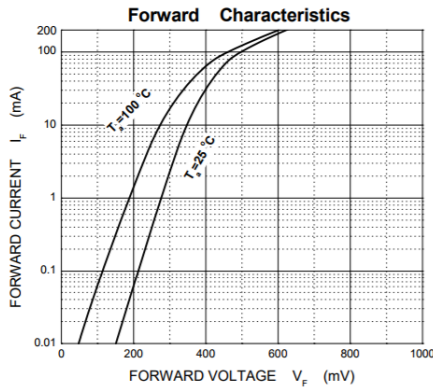
Symbol	Parameter	Value	Units
V _R	Reverse Voltage	30	V
I _F	Forward Continuous Current	200	mA
P _{tot}	Power Dissipation	200	mW
T _J	Operating Junction Temperature Range	-55 to 125	°C
I _{FSM}	Peak Forward Surge Current (t=1S.NON-Repetitive)	1	A
T _{stg}	Storage Temperature Range	-55 to 150	°C
T _J	Soldering temperature during	260	°C
R _J	Thermal Resistance Junction to Ambient	500	°C/W

ELECTRICAL CHARACTERISTICS (Ta = 25 °C)

Symbol	Parameter	Test Conditions	Min	Max	Units
V _F	Forward Voltage	I _F =0.1mA		0.24	V
		I _F =1mA		0.32	
		I _F =10mA		0.40	
		I _F =30mA		0.50	
		I _F =100mA		1.00	
V _R	Reverse breakdown voltage	I _R =100uA	30		V
I _R	Reverse voltage leakage current	V _R =25V		10	uA
C _J	Typical Junction Capacitance	V _R =1V, f=1.0MHz		10	pF
T _{rr}	Reverse recovery time	I _F =I _R =10mA, I _{rr} =0.1x I _R		5	nS

		$R_L=100\Omega$		
--	--	-----------------	--	--

Typical Characteristics



Pin Configuration - Top View

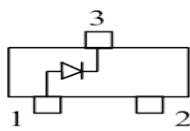


Figure 1
BAT54

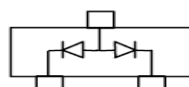


Figure 2
BAT54A

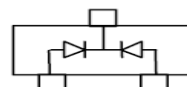


Figure 3
BAT54C

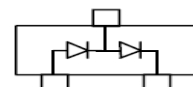
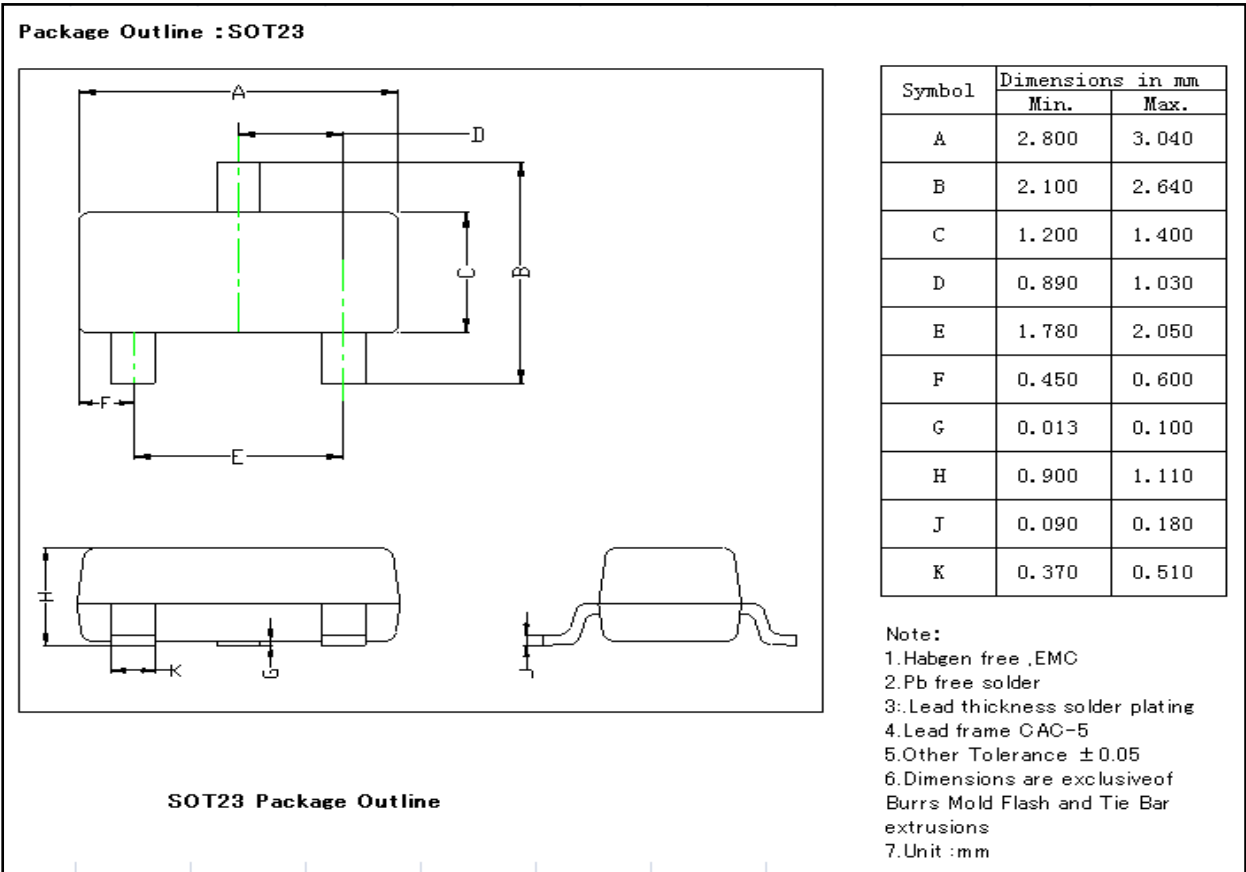


Figure 4
BAT54S

ORDERING INFORMATION

Device	Package	Shipping	Tape wide	Emboss pitch	Tape specification	Notes
BAT54-BAT54S	SOT23	Tape & Reel 3000pcs /7" Reel	8mm	4mm	Conductive	

PACKAGE DIMENSIONS



X-ON Electronics

Largest Supplier of Electrical and Electronic Components

Click to view similar products for [Schottky Diodes & Rectifiers](#) category:

Click to view products by [amsem](#) manufacturer:

Other Similar products are found below :

[MA4E2039](#) [MMBD301M3T5G](#) [RB160M-50TR](#) [D83C](#) [BAS16E6433HTMA1](#) [BAS 3010S-02LRH E6327](#) [BAT 54-02LRH E6327](#)
[NRVBAF360T3G](#) [NSR05F40QNXT5G](#) [NTE555](#) [JANS1N6640](#) [SS3003CH-TL-E](#) [GA01SHT18](#) [CRS10I30A\(TE85L,QM](#) [MBRA140TRPBF](#)
[MBRB30H30CT-1G](#) [BAT 15-04R E6152](#) [JANTX1N5712-1](#) [DMJ3940-000](#) [SB007-03C-TB-E](#) [NRVBB20100CTT4G](#) [NRVBM120LT1G](#)
[NTSB30U100CT-1G](#) [CRG04\(T5L,TEMQ\)](#) [ACDBA1100LR-HF](#) [ACDBA1200-HF](#) [ACDBA240-HF](#) [ACDBA3100-HF](#) [CDBQC0530L-HF](#)
[ACDBA260LR-HF](#) [ACDBA1100-HF](#) [10BQ015-M3/5BT](#) [NRVBM120ET1G](#) [VSSB410S-M3/5BT](#) [1N5819T-G](#) [PDS1040Q-13](#) [B160BQ-13-F](#)
[SDM05U20CSP-7](#) [BAS 70-07 E6433](#) [B140S1F-7](#) [HSM560Je3/TR13](#) [DDB2265-000](#) [ZHCS506QTA](#) [HSM190Je3/TR13](#) [B330AF-13](#)
[ACDBUC0230-HF](#) [SDM1U100S1F-7](#) [MBR10200CTF-G1](#) [CDLL5712](#) [DMF2822-000](#)