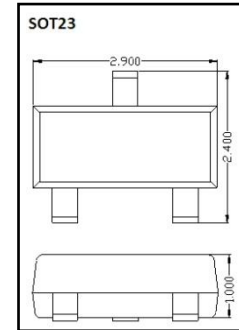


## Schottky Barrier DIODE / DATA SHEET

## BAT54–BAT54S

- ◇ High Conductance
- ◇ Low Current Leakage
- ◇ Small Outline Surface Mount Package
- ◇ RoHS compliant / Green EMC



| MCC Catalog Number | Device Marking |        | Type   | Pin Configuration<br>See page 2 |
|--------------------|----------------|--------|--------|---------------------------------|
|                    | 1              | 2      |        |                                 |
| BAT54              | KL1            | L4/L4P | Single | Figure1                         |
| BAT54A             | KL2            | L42    | Dual   | Figure2                         |
| BAT54C             | KL3            | L43    | Dual   | Figure3                         |
| BAT54S             | KL4            | L44    | Dual   | Figure4                         |

## MAXIMUM RATINGS (Ta = 25 °C)

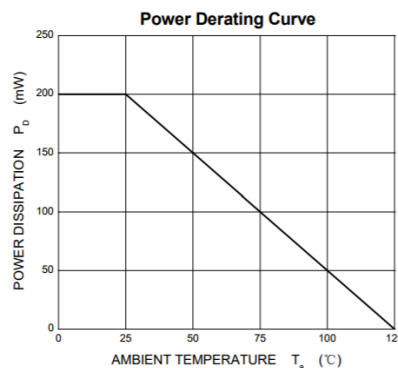
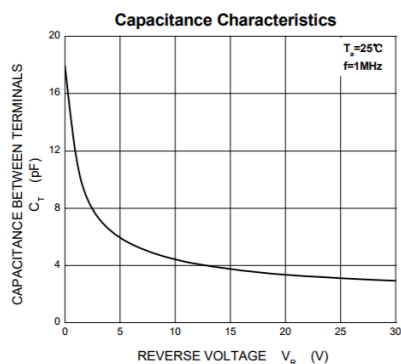
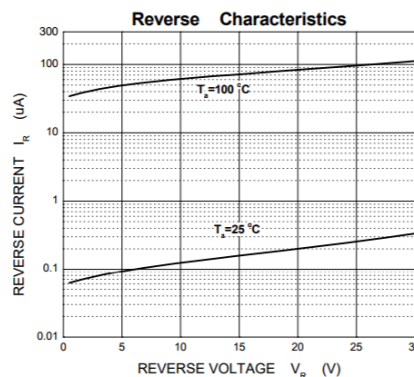
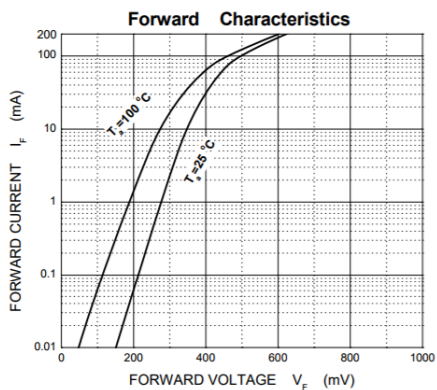
| Symbol           | Parameter   | Value      | Units |
|------------------|---|------------|-------|
| V <sub>R</sub>   | Reverse Voltage                                     | 30         | V     |
| I <sub>F</sub>   | Forward Continuous Current                          | 200        | mA    |
| P <sub>tot</sub> | Power Dissipation                                   | 200        | mW    |
| T <sub>J</sub>   | Operating Junction Temperature Range                | -55 to 125 | °C    |
| I <sub>FSM</sub> | Peak Forward Surge Current<br>(t=1S.NON-Repetitive) | 1          | A     |
| T <sub>stg</sub> | Storage Temperature Range                           | -55 to 150 | °C    |
| T <sub>J</sub>   | Soldering temperature during                        | 260        | °C    |
| R <sub>J</sub>   | Thermal Resistance Junction to Ambient              | 500        | °C/W  |

## ELECTRICAL CHARACTERISTICS (Ta = 25 °C)

| Symbol          | Parameter                       | Test Conditions  | Min | Max  | Units |
|-----------------|---------------------------------|--|-----|------|-------|
| V <sub>F</sub>  | Forward Voltage                 | I <sub>F</sub> =0.1mA  |     | 0.24 | V     |
|                 |                                 | I <sub>F</sub> =1mA  |     | 0.32 |       |
|                 |                                 | I <sub>F</sub> =10mA   |     | 0.40 |       |
|                 |                                 | I <sub>F</sub> =30mA   |     | 0.50 |       |
|                 |                                 | I <sub>F</sub> =100mA  |     | 1.00 |       |
| V <sub>R</sub>  | Reverse breakdown voltage       | I <sub>R</sub> =100uA  | 30  |      | V     |
| I <sub>R</sub>  | Reverse voltage leakage current | V <sub>R</sub> =25V  |     | 10   | uA    |
| C <sub>J</sub>  | Typical Junction Capacitance    | V <sub>R</sub> =1V, f=1.0MHz   |     | 10   | pF    |
| T <sub>rr</sub> | Reverse recovery time           | I <sub>F</sub> =I <sub>R</sub> =10mA, I <sub>rr</sub> =0.1x I <sub>R</sub> |     | 5    | nS    |

|  |  |                 |  |
|--|--|-----------------|--|
|  |  | $R_L=100\Omega$ |  |
|--|--|-----------------|--|

**Typical Characteristics**



**Pin Configuration - Top View**

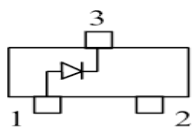


Figure 1  
BAT54

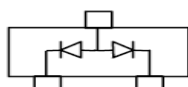


Figure 2  
BAT54A

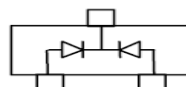


Figure 3  
BAT54C

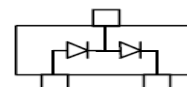
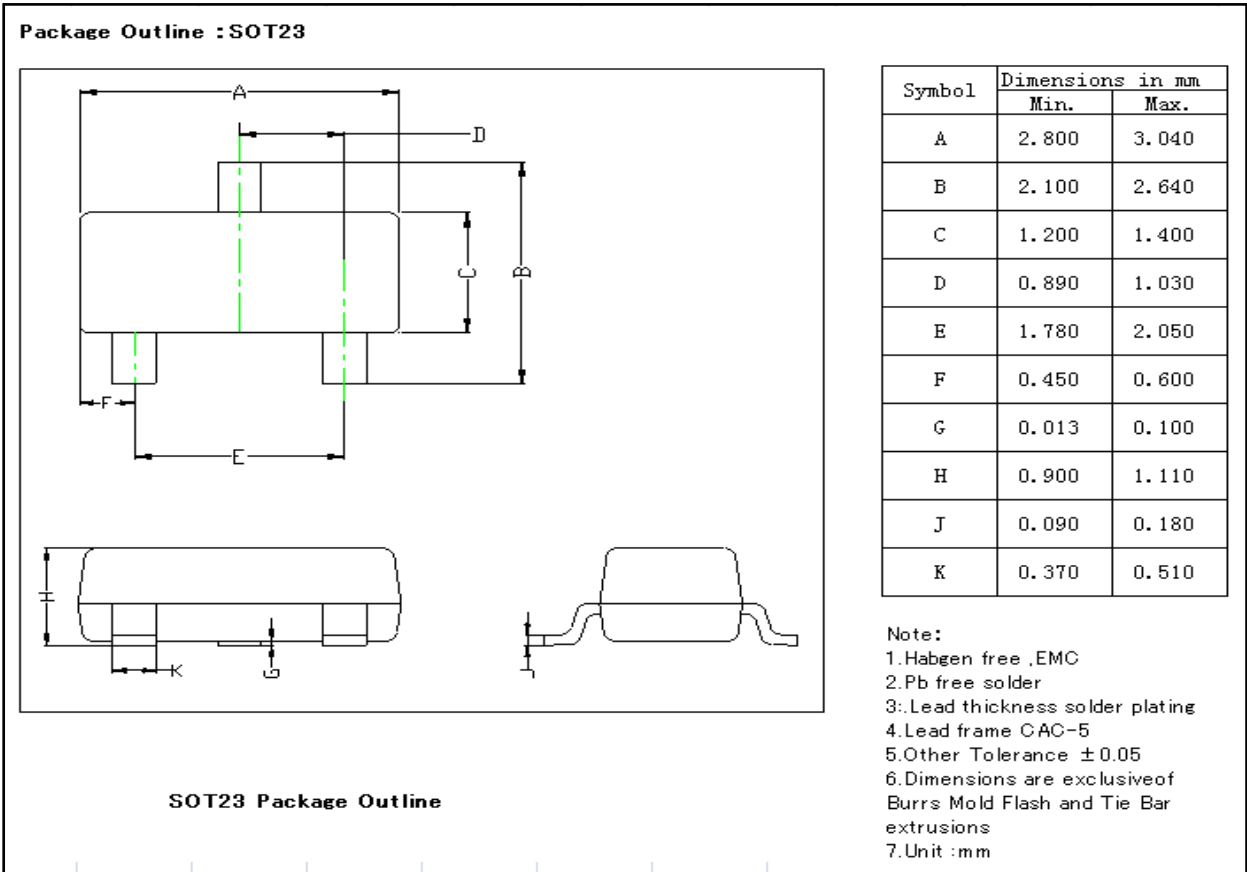


Figure 4  
BAT54S

**ORDERING INFORMATION**

| Device       | Package | Shipping                        | Tape wide | Emboss pitch | Tape specification | Notes |
|--------------|---------|---------------------------------|-----------|--------------|--------------------|-------|
| BAT54-BAT54S | SOT23   | Tape & Reel<br>3000pcs /7" Reel | 8mm       | 4mm          | Conductive         |       |

## PACKAGE DIMENSIONS



## X-ON Electronics

Largest Supplier of Electrical and Electronic Components

*Click to view similar products for [Schottky Diodes & Rectifiers](#) category:*

*Click to view products by [amsem](#) manufacturer:*

Other Similar products are found below :

[MA4E2039](#) [MMBD301M3T5G](#) [RB160M-50TR](#) [D83C](#) [BAS16E6433HTMA1](#) [BAS 3010S-02LRH E6327](#) [BAT 54-02LRH E6327](#)  
[NRVBAF360T3G](#) [NSR05F40QNXT5G](#) [NTE555](#) [JANS1N6640](#) [SS3003CH-TL-E](#) [GA01SHT18](#) [CRS10I30A\(TE85L,QM](#) [MBRA140TRPBF](#)  
[MBRB30H30CT-1G](#) [BAT 15-04R E6152](#) [JANTX1N5712-1](#) [DMJ3940-000](#) [SB007-03C-TB-E](#) [NRVBB20100CTT4G](#) [NRVBM120LT1G](#)  
[NTSB30U100CT-1G](#) [CRG04\(T5L,TEMQ\)](#) [ACDBA1100LR-HF](#) [ACDBA1200-HF](#) [ACDBA240-HF](#) [ACDBA3100-HF](#) [CDBQC0530L-HF](#)  
[ACDBA260LR-HF](#) [ACDBA1100-HF](#) [10BQ015-M3/5BT](#) [NRVBM120ET1G](#) [VSSB410S-M3/5BT](#) [1N5819T-G](#) [PDS1040Q-13](#) [B160BQ-13-F](#)  
[SDM05U20CSP-7](#) [BAS 70-07 E6433](#) [B140S1F-7](#) [HSM560Je3/TR13](#) [DDB2265-000](#) [ZHCS506QTA](#) [HSM190Je3/TR13](#) [B330AF-13](#)  
[ACDBUC0230-HF](#) [SDM1U100S1F-7](#) [MBR10200CTF-G1](#) [CDLL5712](#) [DMF2822-000](#)