

Transient Voltage Suppressor Diodes

Features

- For surface mounted applications
- Low-profile package
- Ideal for automated placement
- Available in Unidirectional and Bidirectional
- 400 W peak pulse power capability with a 10/1000 μ s waveform
- Low incremental surge resistance, excellent clamping capability
- Very fast response time
 - High temperature soldering guaranteed: 260 °C/10 s at terminals
- Meets MSL level 1
- Component in accordance to RoHS

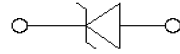
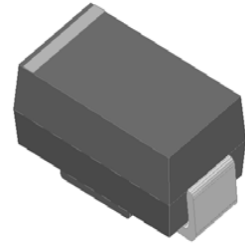
Typical Applications

Use in sensitive electronics protection against voltage transients induced by inductive load switching and lighting on ICs, MOSFET, signal lines of sensor units for consumer, computer, industrial, telecommunication.

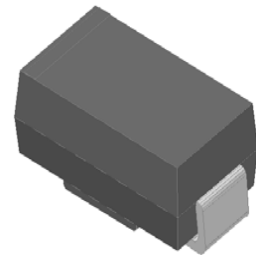
Mechanical Data

- **Package:** DO-214AC (SMA)
Molding compound meets UL 94 V-0 flammability rating, RoHS-compliant, halogen-free
- **Terminals:** Matte tin plated leads, solderable per J-STD-002B and JESD22-B102D
- **Polarity:** For uni-directional types the band denotes cathode end, no marking on bi-directional types

Uni-directional



Bi-directional



■Maximum Ratings ($T_a=25^\circ\text{C}$ Unless otherwise specified)

PARAMETER	SYMBOL	UNIT	Max
Peak power dissipation, with a 10/1000 μ s waveform ^{(1) (2)} (Fig.1)	P_{PPM}	W	400
Peak pulse current, with a 10/1000 μ s waveform ⁽¹⁾	I_{PPM}	A	See Next Table
Power dissipation, on infinite heat sink at $T_L=75^\circ\text{C}$	P_D	W	1.0
Peak forward surge current, 8.3 ms single half sine-wave unidirectional only ⁽²⁾	I_{FSM}	A	40
Operating junction and storage temperature range	T_J, T_{STG}	$^\circ\text{C}$	-55 to +150

■Electrical Characteristics ($T_a=25^\circ\text{C}$ Unless otherwise specified)

PARAMETER	SYMBOL	UNIT	VALUE
Maximum instantaneous forward voltage @ at 25A for unidirectional only ⁽³⁾	V_F	V	3.5/5.0
Maximum instantaneous forward voltage @ at 1A for unidirectional only	V_F	V	1.5

■Thermal Characteristics ($T_a=25^\circ\text{C}$ Unless otherwise specified)

PARAMETER	SYMBOL	UNIT	Conditions	VALUE
Thermal resistance(Typical)	$R_{\theta JL}$	$^\circ\text{C}/\text{W}$	junction to lead	30
	$R_{\theta JA}$	$^\circ\text{C}/\text{W}$	junction to ambient	120

Notes:

- (1) Non-repetitive current pulse, per Fig. 3 and derated above $T_A = 25^\circ\text{C}$ per Fig.2.
- (2) Mounted on 0.2 x 0.2" (5.0 x 5.0 mm) copper pads to each terminal
- (3) $V_F < 3.5\text{V}$ for devices of $V_{BR} < 200\text{V}$ and $V_F < 5.0\text{V}$ for devices of $V_{BR} > 201\text{V}$

■ Electrical Characteristics (T_A=25°C unless otherwise noted)

Part Number (Uni)	Part Number (Bi)	V _{BR} @I _T Breakdown Voltage			I _R @V _{WM} Maximum Reverse Leakage I _R ⁽³⁾ (μA)	V _{RWM} Working Peak Reverse Voltage V _{RWM} (V)	IPP Maximum Surge Current IPP ⁽²⁾ (A)	Maximum Clamping Voltage V _c @ I _{PP} (V)
		Min(V)	Max (V)	IT ⁽¹⁾ (mA)				
P4SMA6.8A	P4SMA6.8CA	6.46	7.14	10	1000	5.8	38.1	10.5
P4SMA7.5A	P4SMA7.5CA	7.13	7.88	10	500	6.4	35.4	11.3
P4SMA8.2A	P4SMA8.2CA	7.79	8.61	10	200	7.0	33.0	12.1
P4SMA9.1A	P4SMA9.1CA	8.65	9.56	1	50	7.8	29.8	13.4
P4SMA10A	P4SMA10CA	9.50	10.50	1	10	8.6	27.6	14.5
P4SMA11A	P4SMA11CA	10.45	11.55	1	5	9.4	25.6	15.6
P4SMA12A	P4SMA12CA	11.40	12.60	1	5	10.2	23.9	16.7
P4SMA13A	P4SMA13CA	12.35	13.65	1	5	11.1	22.0	18.2
P4SMA15A	P4SMA15CA	14.25	15.75	1	5	12.8	18.8	21.2
P4SMA16A	P4SMA16CA	15.20	16.80	1	5	13.6	17.7	22.5
P4SMA18A	P4SMA18CA	17.10	18.90	1	5	15.3	15.8	25.2
P4SMA20A	P4SMA20CA	19.00	21.00	1	5	17.1	14.4	27.7
P4SMA22A	P4SMA22CA	20.90	23.10	1	5	18.8	13.0	30.6
P4SMA24A	P4SMA24CA	22.80	25.20	1	5	20.5	12.0	33.2
P4SMA27A	P4SMA27CA	25.65	28.35	1	5	23.1	10.6	37.5
P4SMA30A	P4SMA30CA	28.50	31.50	1	5	25.6	9.6	41.4
P4SMA33A	P4SMA33CA	31.35	34.65	1	5	28.2	8.7	45.7
P4SMA36A	P4SMA36CA	34.20	37.80	1	5	30.8	8.0	49.9
P4SMA39A	P4SMA39CA	37.05	40.95	1	5	33.3	7.4	53.9
P4SMA43A	P4SMA43CA	40.85	45.15	1	5	36.8	6.7	59.3
P4SMA47A	P4SMA47CA	44.65	49.35	1	5	40.2	6.1	64.8
P4SMA51A	P4SMA51CA	48.45	53.55	1	5	43.6	5.7	70.1
P4SMA56A	P4SMA56CA	53.20	58.80	1	5	47.8	5.2	77.0
P4SMA62A	P4SMA62CA	58.90	65.10	1	5	53.0	4.7	85.0
P4SMA68A	P4SMA68CA	64.60	71.40	1	5	58.1	4.3	92.0
P4SMA75A	P4SMA75CA	71.25	78.75	1	5	64.1	3.9	103.0
P4SMA82A	P4SMA82CA	77.90	86.10	1	5	70.1	3.5	113.0
P4SMA91A	P4SMA91CA	86.45	95.55	1	5	77.8	3.2	125.0
P4SMA100A	P4SMA100CA	95.00	105.00	1	5	85.5	2.9	137.0
P4SMA110A	P4SMA110CA	104.50	115.50	1	5	94.0	2.6	152.0
P4SMA120A	P4SMA120CA	114.00	126.00	1	5	102.0	2.4	165.0
P4SMA130A	P4SMA130CA	123.50	136.50	1	5	111.0	2.2	179.0
P4SMA150A	P4SMA150CA	142.50	157.50	1	5	128.0	1.9	207.0
P4SMA160A	P4SMA160CA	152.00	168.00	1	5	136.0	1.8	219.0
P4SMA170A	P4SMA170CA	161.50	178.50	1	5	145.0	1.7	234.0
P4SMA180A	P4SMA180CA	171.00	189.00	1	5	154.0	1.6	246.0

■ Electrical Characteristics ($T_A = 25^\circ\text{C}$ unless otherwise noted)

Part Number (Uni)	Part Number (Bi)	$V_{BR@I_T}$ Breakdown Voltage $V_{BR@I_T}$			$I_R@V_{WM}$ Maximum Reverse Leakage $I_R^{(3)}$ (μA)	V_{RWM} Working Peak Reverse Voltage V_{RWM} (V)	IPP Maximum Reverse Surge Current IPP ⁽²⁾ (A)	Maximum Clamping Voltage V_c @ I_{PP} (V)
		Min(V)	Max (V)	$I_T^{(1)}$ (mA)				
P4SMA200A	P4SMA200CA	190.00	210.00	1	5	171.0	1.4	274.0
P4SMA220A	P4SMA220CA	209.00	231.00	1	5	185.0	1.2	328.0
P4SMA250A	P4SMA250CA	237.50	262.50	1	5	214.0	1.1	344.0
P4SMA300A	P4SMA300CA	285.00	315.00	1	5	256.0	0.9	414.0
P4SMA350A	P4SMA350CA	332.50	367.50	1	5	299.3	0.8	482.0
P4SMA380A	P4SMA380CA	361.00	399.00	1	5	324.9	0.7	524.4
P4SMA400A	P4SMA400CA	380.00	420.00	1	5	342.0	0.7	552.0
P4SMA440A	P4SMA440CA	418.00	462.00	1	5	376.2	0.6	607.2
P4SMA500A	P4SMA500CA	475.00	525.00	1	5	427.5	0.6	690.0
P4SMA520A	P4SMA520CA	494.00	546.00	1	5	444.6	0.5	717.6
P4SMA550A	P4SMA550CA	522.50	577.50	1	5	470.3	0.5	759.0
P4SMA600A	P4SMA600CA	570.00	630.00	1	5	513.0	0.5	828.0

备注: Notes:

- (1) $t_p \leq 50\text{ms}$ Pulse test: $t_p \leq 50\text{ms}$
- (2) Surge current waveform per Fig. 3 and derated per Fig.2.
- (3) For bi-directional types having V_{WM} of 10 V and less, the I_R limit is doubled

■ Characteristics(Typical)

FIG1: Peak Pulse Power Rating Curve

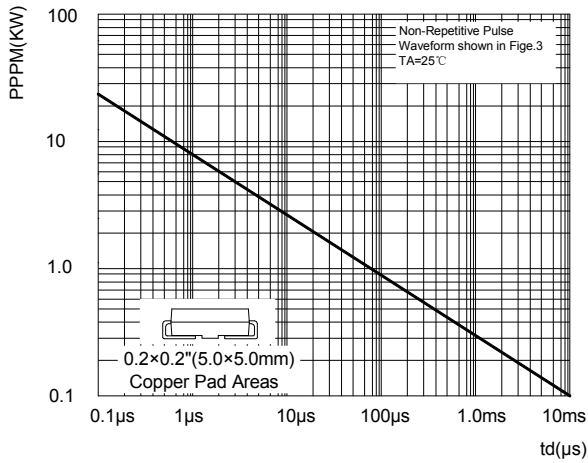


FIG2: Pulse Power or Current vs. Initial Junction Temperature

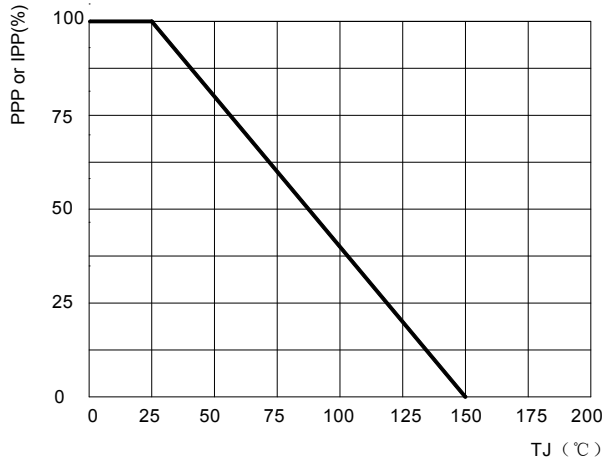


FIG3: Pulse Waveform

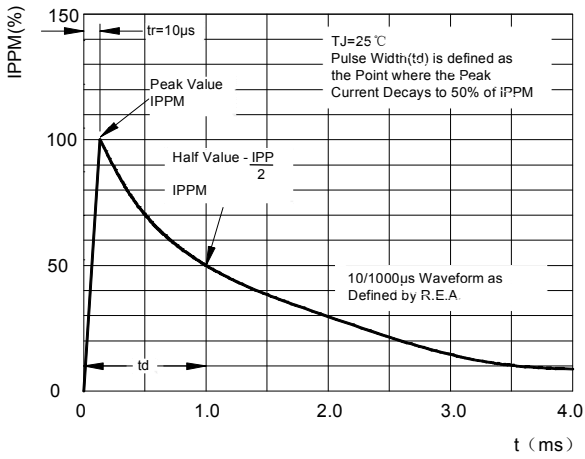


FIG4: Typical Transient Thermal Impedance

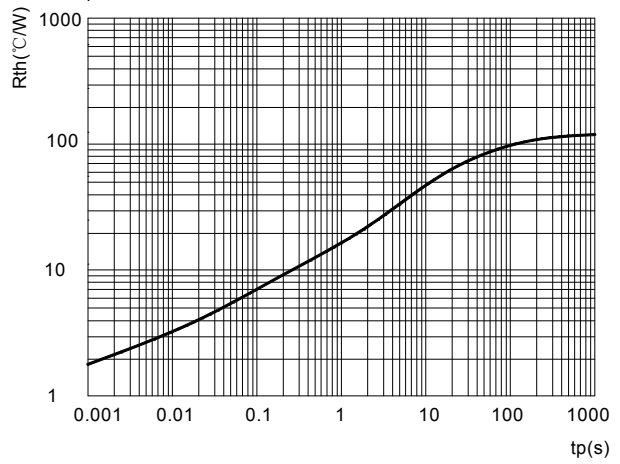
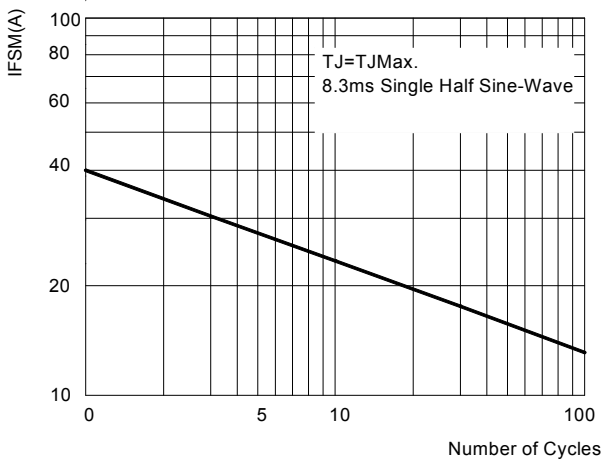


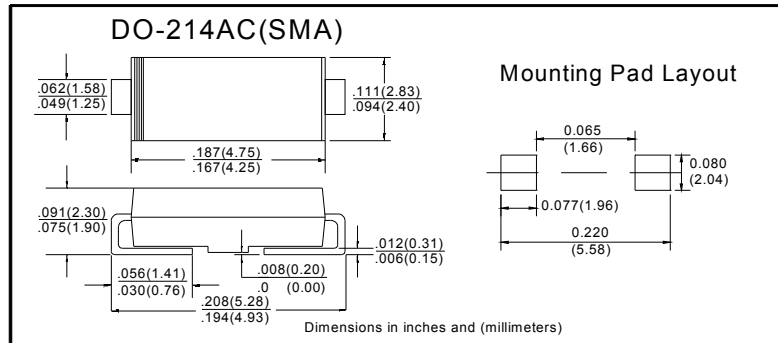
FIG5: Maximum Non-Repetitive Surge Current



■ Ordering Information (Example)

PREFERED	PACKAGE CODE	MINIMUM PACKAGE(pcs)	INNER BOX QUANTITY(pcs)	OUTER CARTON QUANTITY(pcs)	DELIVERY MODE
P4SMA Series	SMA	5000	10000	80000	13" reel

■ Outline Dimensions



IMPORTANT NOTICE AND DISCLAIMER

AM RESERVES THE RIGHT TO MAKE CHANGES TO ALL PRODUCT, PRODUCT SPECIFICATIONS AND DATA WITHOUT NOTICE TO IMPROVE RELIABILITY, FUNCTION OR DESIGN OR OTHERWISE. CUSTOMERS SHOULD OBTAIN AND CONFIRM THE LATEST PRODUCT INFORMATION AND SPECIFICATIONS BEFORE FINAL DESIGN PURCHASE OR USE.

AM disclaim any and all liability for any errors, inaccuracies or incompleteness contained in any datasheet or in any other disclosure relating to any product.

All information are provided as-is, even it has qualified by the AEC-Q101 which satisfy industrial application requirement, except as expressly stated in this data sheet is applied for automotive grade, AM make no warranties, representation or guarantee, whether express, implied or statutory, including, without limitation, regarding any merchantability, satisfactory quality, or fitness for a particular purpose with respect to AM.

AM does not assume any liability or compensation for any application assistance or customer product design, and make no warranty or accept any liability with products, which are purchased or used for any unintended or unauthorized application.

Except as expressly indicated in writing, AM products are not designed for use in medical, life-saving, or lifesustaining applications or for any other application in which the failure of the AM product could result in personal injury or death. Customers using or selling AM products not expressly indicated for use in such applications do so at their own risk. Please contact authorized AM personnel to obtain written terms and conditions regarding products designed for such applications.

No license, express or implied, by estoppel or otherwise, to any intellectual property rights is granted by this document or by any conduct of AM. Product names and markings noted herein may be trademarks of their respective owners.

X-ON Electronics

Largest Supplier of Electrical and Electronic Components

Click to view similar products for [ESD Suppressors / TVS Diodes](#) category:

Click to view products by [amsem](#) manufacturer:

Other Similar products are found below :

[60KS200C](#) [D18V0L1B2LP-7B](#) [D5V0F4U5P5-7](#) [NTE4902](#) [P4KE27CA](#) [P6KE11CA](#) [P6KE8.2A](#) [SA60CA](#) [SA64CA](#) [SMBJ12CATR](#)
[SMBJ33CATR](#) [SMBJ6.5A](#) [SMBJ8.0A](#) [ESD101-B1-02ELS](#) [E6327](#) [ESD112-B1-02EL](#) [E6327](#) [ESD7451N2T5G](#) [19180-510](#) [CPDT-5V0USP-](#)
[HF](#) [3.0SMCJ33CA-F](#) [3.0SMCJ36A-F](#) [HSPC16701B02TP](#) [JANTX1N6126A](#) [D3V3Q1B2DLP3-7](#) [D55V0M1B2WS-7](#) [SCM1293A-04SO](#)
[ESD200-B1-CSP0201](#) [E6327](#) [SM12-7](#) [CEN955](#) [W/DATA](#) [VESD12A1A-HD1-GS08](#) [CPDQC5V0-HF](#) [D1213A-01LP4-7B](#) [ESD101-B1-02EL](#)
[E6327](#) [AOZ8808DI-03](#) [5KP15A](#) [5KP48A](#) [5KP90A](#) [ESD3V3D7-TP](#) [15KPA36A-LF](#) [P4KE56CA](#) [P4KE68A](#) [P4KE91CATR](#) [P6KE120A](#)
[P6KE13CA](#) [P6KE43CA](#) [P6KE6.8CA](#) [P6KE8.2](#) [P6SMBJ20CA](#) [JANTX1N6072A](#) [SR2835ESKG](#) [SA90CA](#)