

MONOCHROME CHIP :. AGB64LV01-QC-E



HIGHLY INTEGRATED AMULET GRAPHICAL OS CHIP™ FOR MONOCHROME DISPLAYS

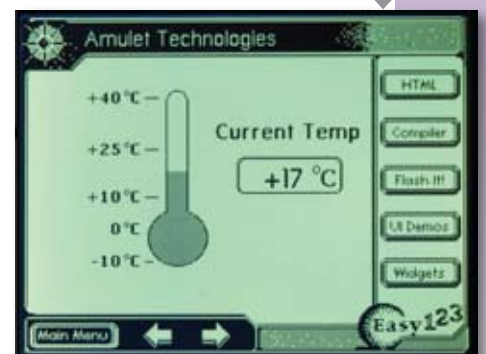
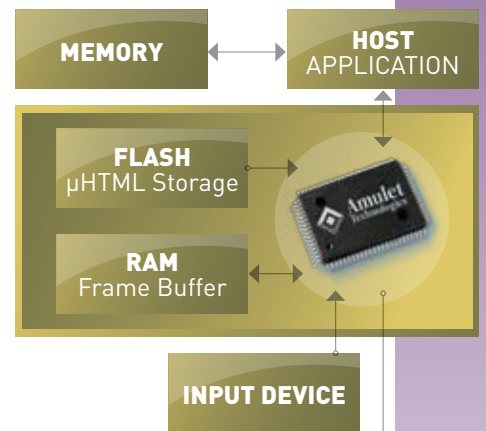


Amulet's GUI processor for monochrome displays enables OEMs and design firms to seamlessly take their products to the next level by implementing visually appealing, interactive GUIs. The Graphical OS Chip™ includes all of the hardware and software required to turn an LCD and touch panel into a user interface. Amulet's monochrome display solution is perfect for many embedded system applications in markets such as Appliance, Industrial Controls, Test & Measurement and Building Automation, which currently have push buttons, knobs and LEDs.

- ∴ Supports Passive Displays
- ∴ Simple UART Interface
- ∴ Supports 4-wire Resistive Touch Panels
- ∴ Drag-and-Drop GUI Creation in Dynamic HTML
- ∴ GIF and JPEG Image, and GIF Animation Support
- ∴ Built-In Royalty-FREE Graphical Operating System
- ∴ Inexpensive Development Tools (CD Included in Starter Kit)

Monochrome GUI Design Made Easy

Embedded in the Graphical OS Chip™ is a complete graphical operating system that executes GUI applications built in dynamic HTML. Developing a GUI in dynamic HTML enables designers to drag and drop user interface elements and see the production-ready GUI on actual hardware before programmers even start writing application code.



Development Tool CD

A development tool CD is included in all Starter Kits or sold separately (UHT-CS1). It contains the Amulet HTML Compiler/programmer, an online documentation manual, a 45-day trial of NAMO (HTML editing software) and Docklight, a test analysis and simulation tool for serial communication protocols.

Using the provided NAMO Web Editor, or any other HTML editor, you can create an HTML-based Graphical User Interface (GUI). The Amulet HTML Compiler is used to transform the HTML based UI into a single compact binary file that is then programmed to the flash memory used by the Amulet Graphical OS Chip™. The online documentation explains how to use HTML to create a dynamic GUI for your embedded product, and offers many sample projects to help get your GUI started. Software is Royalty-FREE in production.

AGB64LV01-QC-E – Electrical and Environmental Specifications:

Recommended Operating Conditions	
Power supply V_{cc}	3.0V to 3.6V, 3.3V nominal
Environmental Specifications	
Operating temperature	-20°C to +75°C
Storage temperature	-60°C to +150°C
DC Specifications	
V_{cc} Operating current	16mA @ 16MHz, 10mA @ 10MHz
RoHS Compliant Package Options	
80-pin PQFP	14mm x 20mm x 2.7mm

System Parameters:

LCDs supported	Monochrome, up to VGA resolution (640x480)
Interfaces supported	UART and SPI
SRAM	128Kx8 Minimum
Touch Panel Decoder	4-wire support, calibration, noise filtering
Flash	Atmel 4 or 8-Mbit serial data flash recommended
Clock/Crystal	Up to 20MHz



Want More Information?

Call or email us! Also visit us on the Web at www.AmuletTechnologies.com for the latest data sheets, programmer's guide, software updates and more.

The Amulet Graphical OS Chip™ (AGB64LV01-QC-E) is available through Amulet franchised distributors. Visit our Web site for direct "order now" links.

Campbell, California, USA
Sales@AmuletTechnologies.com
(408) 374-4956

Europe
Info@AmuletTechnologies.com
+33 (0)6 3356 1179

X-ON Electronics

Largest Supplier of Electrical and Electronic Components

Click to view similar products for [8-bit Microcontrollers - MCU category](#):

Click to view products by [Amulet manufacturer](#):

Other Similar products are found below :

[CY8C20524-12PVXIT](#) [MB95F013KPMC-G-SNE2](#) [MB95F263KPF-G-SNE2](#) [MB95F264KPFT-G-SNE2](#) [MB95F398KPMC-G-SNE2](#)
[MB95F478KPMC2-G-SNE2](#) [MB95F564KPF-G-SNE2](#) [MB95F636KWQN-G-SNE1](#) [MB95F696KPMC-G-SNE2](#) [MB95F698KPMC2-G-SNE2](#)
[MB95F698KPMC-G-SNE2](#) [MB95F818KPMC1-G-SNE2](#) [901015X](#) [CY8C3MFIDOCK-125](#) [403708R](#) [MB95F354EPF-G-SNE2](#)
[MB95F564KWQN-G-SNE1](#) [MB95F636KP-G-SH-SNE2](#) [MB95F694KPMC-G-SNE2](#) [MB95F778JPMC1-G-SNE2](#) [MB95F818KPMC-G-SNE2](#)
[LC87F0G08AUJA-AH](#) [CP8361BT](#) [CG8421AF](#) [MB95F202KPF-G-SNE2](#) [DF36014FPV](#) [5962-8768407MUA](#) [MB95F318EPMC-G-SNE2](#)
[MB94F601APMC1-GSE1](#) [MB95F656EPF-G-SNE2](#) [LC78615E-01US-H](#) [LC87F5WC8AVU-QIP-H](#) [MB95F108AJSPMC-G-JNE1](#) [73S1210F-](#)
[68M/F/PJ](#) [MB89F538-101PMC-GE1](#) [LC87F7DC8AVU-QIP-H](#) [MB95F876KPMC-G-SNE2](#) [MB88386PMC-GS-BNDE1](#) [LC87FBK08AU-](#)
[SSOP-H](#) [LC87F2C64AU-QFP-H](#) [MB95F636KNWQN-G-118-SNE1](#) [MB95F136NBSTPFV-GS-N2E1](#) [LC87F5NC8AVU-QIP-E](#)
[LC87F76C8AU-TQFP-E](#) [LC87F2G08AU-SSOP-E](#) [CP8085AT](#) [MB95F564KPF-G-UNE2](#) [MC9S08PA4VWJ](#) [MC9S08QG8CDTE](#)
[UPD78F0532AGA\(S\)-HAB-AX](#)