

FEATURES

Fixed gain of 16.5 dB
Operation up to 1000 MHz
37 dBm Output Third-Order Intercept (OIP3)
3 dB noise figure
Input/output internally matched to 50 Ω
Stable temperature and power supply
3 V or 5 V power supply
110 mA power supply current

APPLICATIONS

VCO buffers
General purpose Tx/Rx amplification

GENERAL DESCRIPTION

The [ADL5530](#) is a broadband, fixed-gain, linear amplifier that operates at frequencies up to 1000 MHz. The device can be used in a wide variety of wired and wireless devices, including cellular, broadband, CATV, and LMDS/MMDS applications.

The [ADL5530](#) provides a gain of 16.5 dB, which is stable over frequency, temperature, power supply, and from device to device. It achieves an OIP3 of 37 dBm with an output compression point of 21.8 dB and a noise figure of 3 dB.

This amplifier is single-ended and internally matched to 50 Ω with an input return loss of 11 dB. Only input/output ac-coupling capacitors, a power supply decoupling capacitor, and an external inductor are required for operation.

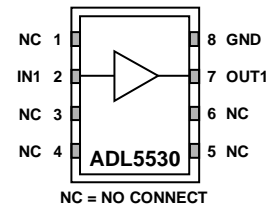
FUNCTIONAL BLOCK DIAGRAM

Figure 1.

05534-001

The [ADL5530](#) operates with supply voltages of 3 V or 5 V with a supply current of 110 mA.

The [ADL5530](#) is fabricated on a GaAs pHEMPT process. The device is packaged in a 3 mm \times 2 mm LFCSP that uses an exposed paddle for excellent thermal impedance. It operates from -40°C to $+85^{\circ}\text{C}$. A fully populated evaluation board is also available.

TABLE OF CONTENTS

| | | | |
|--|---|--|----|
| Features | 1 | Typical Performance Characteristics | 7 |
| Applications..... | 1 | Theory of Operation | 11 |
| Functional Block Diagram | 1 | Soldering Information and Recommended PCB Land Pattern..... | 11 |
| General Description | 1 | Evaluation Board | 12 |
| Revision History | 2 | Outline Dimensions | 14 |
| Specifications..... | 3 | Ordering Guide | 14 |
| Typical Scattering Parameters..... | 4 | | |
| Absolute Maximum Ratings..... | 5 | | |
| ESD Caution..... | 5 | | |
| Pin Configuration and Function Descriptions..... | 6 | | |

REVISION HISTORY

2/2017—Rev. B to Rev. C

| | |
|----------------------------------|------------|
| Changed CP-8-1 to CP-8-23 | Throughout |
| Changes to Figure 2..... | 6 |
| Updated Outline Dimensions | 14 |
| Changes to Ordering Guide | 14 |

7/2015—Rev. A to Rev. B

| | |
|--|----|
| Changes to Figure 26..... | 13 |
| Added Figure 27, Renumbered Sequentially | 13 |

11/2013—Rev 0 to Rev. A

| | |
|--|----|
| Changes to Figure 2..... | 6 |
| Added Figure 15, Renumbered Sequentially | 9 |
| Added Exposed Pad Notation to Outline Dimensions | 13 |
| Changes to Ordering Guide | 13 |

7/2006—Revision 0: Initial Version

SPECIFICATIONS

VPOS = 5 V and $T_A = 25^\circ\text{C}$, unless otherwise noted.

Table 1.

| Parameter | Conditions | Min | Typ | Max | Unit |
|--------------------------------|---|------|------------|-----------|------|
| OVERALL FUNCTION (See Table 2) | | | | | |
| Frequency Range ¹ | | 10 | | 1000 | MHz |
| Gain (S21) | | | 16.5 | | dB |
| Input Return Loss (S11) | | | -11 | | dB |
| Output Return Loss (S22) | | | -20 | | dB |
| Reverse Isolation (S12) | | | -21.5 | | dB |
| FREQUENCY = 70 MHz | | | | | |
| Gain | | 15 | 16.7 | 18 | dB |
| vs. Temperature | $-40^\circ\text{C} \leq T_A \leq +85^\circ\text{C}$ | | ± 0.1 | | dB |
| vs. Supply | 4.75 V to 5.25 V | | ± 0.02 | | dB |
| Output 1 dB Compression Point | | | 21.7 | | dBm |
| Output Third-Order Intercept | $\Delta f = 10 \text{ MHz}$, Output Power (P_{OUT}) = 10 dBm per tone | | 37 | | dBm |
| Noise Figure | | | 5 | | dB |
| | VPOS = 3 V | | 3.2 | | dB |
| FREQUENCY = 190 MHz | | | | | |
| Gain | | 15 | 16.8 | 18.5 | dB |
| vs. Frequency | $\pm 50 \text{ MHz}$ | | ± 0.1 | | dB |
| vs. Temperature | $-40^\circ\text{C} \leq T_A \leq +85^\circ\text{C}$ | | ± 0.2 | | dB |
| vs. Supply | 4.75 V to 5.25 V | | ± 0.02 | | dB |
| Output 1 dB Compression Point | | | 21.8 | | dBm |
| Output Third-Order Intercept | $\Delta f = 10 \text{ MHz}$, $P_{\text{OUT}} = 10 \text{ dBm}$ per tone | | 37 | | dBm |
| Noise Figure | | | 3 | 4.5 | dB |
| | VPOS = 3 V | | 2.3 | | dB |
| FREQUENCY = 380 MHz | | | | | |
| Gain | | 14.8 | 16 | 17.3 | dB |
| vs. Frequency | $\pm 50 \text{ MHz}$ | | ± 0.1 | | dB |
| vs. Temperature | $-40^\circ\text{C} \leq T_A \leq +85^\circ\text{C}$ | | ± 0.3 | ± 0.8 | dB |
| vs. Supply | 4.75 V to 5.25 V | | ± 0.02 | | dB |
| Output 1 dB Compression Point | | 19.5 | 21.6 | | dBm |
| Output Third-Order Intercept | $\Delta f = 10 \text{ MHz}$, $P_{\text{OUT}} = 10 \text{ dBm}$ per tone | | 36 | | dBm |
| Noise Figure | | | 2.5 | 3.5 | dB |
| | VPOS = 3 V | | 2 | | dB |
| FREQUENCY = 900 MHz | | | | | |
| Gain | | 13 | 14.5 | 16 | dB |
| vs. Frequency | $\pm 50 \text{ MHz}$ | | ± 0.2 | | dB |
| vs. Temperature | $-40^\circ\text{C} \leq T_A \leq +85^\circ\text{C}$ | | ± 0.5 | ± 1 | dB |
| vs. Supply | 4.75 V to 5.25 V | | ± 0.02 | | dB |
| Output 1 dB Compression Point | | | 21.4 | | dBm |
| Output Third-Order Intercept | $\Delta f = 10 \text{ MHz}$, $P_{\text{OUT}} = 10 \text{ dBm}$ per tone | | 37 | | dBm |
| Noise Figure | | | 2.7 | 3.5 | dB |
| | VPOS = 3 V | | 2.3 | | dB |
| POWER INTERFACE | | | | | |
| Supply Voltage (VPOS) | Pin VPOS | 3 | 5 | 5.5 | V |
| Supply Current | | | 110 | 135 | mA |
| vs. Temperature | $-40^\circ\text{C} \leq T_A \leq +85^\circ\text{C}$ | | ± 5 | | mA |
| Power Dissipation | VPOS = 5 V | | 0.55 | | W |
| | VPOS = 3 V | | 0.33 | | W |

¹ For operation at lower frequencies, see the Theory of Operation section.

TYPICAL SCATTERING PARAMETERS

VPOS = 5 V and T_A = 25°C.

Table 2.

| Freq. (MHz) | S11 | | | S21 | | | S12 | | | S22 | | | K Factor |
|-------------|-------|-----------|-------|------|-----------|-------|-------|-----------|-------|-------|-----------|-------|----------|
| | dB | Magnitude | Angle | dB | Magnitude | Angle | dB | Magnitude | Angle | dB | Magnitude | Angle | |
| 10 | -7.1 | 0.44 | -34 | 17.2 | 7.23 | 172 | -22.5 | 0.08 | 22 | -17.7 | 0.13 | -69 | 0.94 |
| 20 | -9.7 | 0.33 | -26 | 16.7 | 6.81 | 174 | -21.9 | 0.08 | 12 | -24.4 | 0.06 | -73 | 1.07 |
| 50 | -11.2 | 0.28 | -16 | 16.6 | 6.73 | 174 | -21.7 | 0.08 | 4 | -31.4 | 0.03 | -42 | 1.10 |
| 100 | -11.5 | 0.27 | -13 | 16.5 | 6.70 | 171 | -21.6 | 0.08 | 1 | -30.4 | 0.03 | -23 | 1.10 |
| 150 | -11.4 | 0.27 | -14 | 16.5 | 6.67 | 167 | -21.6 | 0.08 | -1 | -29.3 | 0.03 | -24 | 1.10 |
| 200 | -11.5 | 0.27 | -16 | 16.4 | 6.59 | 162 | -21.6 | 0.08 | -3 | -27.7 | 0.04 | -25 | 1.11 |
| 250 | -11.4 | 0.27 | -19 | 16.3 | 6.52 | 157 | -21.6 | 0.08 | -4 | -26.6 | 0.05 | -25 | 1.11 |
| 300 | -11.4 | 0.27 | -23 | 16.2 | 6.45 | 153 | -21.6 | 0.08 | -5 | -25.1 | 0.06 | -27 | 1.12 |
| 350 | -11.3 | 0.27 | -26 | 16.1 | 6.36 | 149 | -21.6 | 0.08 | -6 | -23.7 | 0.07 | -29 | 1.12 |
| 400 | -11.2 | 0.27 | -29 | 16.0 | 6.29 | 144 | -21.6 | 0.08 | -7 | -22.2 | 0.08 | -32 | 1.12 |
| 450 | -11.1 | 0.28 | -32 | 15.9 | 6.21 | 140 | -21.6 | 0.08 | -8 | -20.7 | 0.09 | -33 | 1.12 |
| 500 | -11.1 | 0.28 | -36 | 15.7 | 6.11 | 136 | -21.6 | 0.08 | -9 | -19.6 | 0.10 | -35 | 1.12 |
| 550 | -11.0 | 0.28 | -39 | 15.6 | 6.02 | 132 | -21.7 | 0.08 | -10 | -18.4 | 0.12 | -37 | 1.13 |
| 600 | -10.9 | 0.29 | -42 | 15.5 | 5.94 | 128 | -21.7 | 0.08 | -11 | -17.3 | 0.14 | -38 | 1.13 |
| 650 | -10.8 | 0.29 | -45 | 15.3 | 5.84 | 124 | -21.6 | 0.08 | -12 | -16.4 | 0.15 | -40 | 1.12 |
| 700 | -10.7 | 0.29 | -49 | 15.2 | 5.73 | 119 | -21.6 | 0.08 | -13 | -15.5 | 0.17 | -41 | 1.13 |
| 750 | -10.6 | 0.29 | -52 | 15.0 | 5.62 | 115 | -21.6 | 0.08 | -13 | -14.6 | 0.19 | -44 | 1.13 |
| 800 | -10.6 | 0.30 | -55 | 14.8 | 5.51 | 111 | -21.6 | 0.08 | -14 | -13.8 | 0.20 | -45 | 1.12 |
| 850 | -10.4 | 0.30 | -58 | 14.6 | 5.39 | 107 | -21.6 | 0.08 | -15 | -13.1 | 0.22 | -47 | 1.12 |
| 900 | -10.3 | 0.30 | -61 | 14.4 | 5.28 | 104 | -21.6 | 0.08 | -16 | -12.4 | 0.24 | -49 | 1.12 |
| 950 | -10.2 | 0.31 | -64 | 14.3 | 5.17 | 100 | -21.6 | 0.08 | -17 | -11.7 | 0.26 | -51 | 1.12 |
| 1000 | -10.1 | 0.31 | -66 | 14.1 | 5.06 | 96 | -21.6 | 0.08 | -18 | -11.2 | 0.28 | -52 | 1.11 |

ABSOLUTE MAXIMUM RATINGS

Table 3.

| Parameter | Rating |
|--|---|
| Supply Voltage, VPOS | 6 V |
| Input Power (re: 50 Ω) | 10 dBm |
| Internal Power Dissipation (Paddle Soldered) | 600 mW |
| θ_{JC} (Junction to Paddle) | 154 $^{\circ}\text{C}/\text{W}$ |
| Maximum Junction Temperature | 180 $^{\circ}\text{C}$ |
| Operating Temperature Range | -40 $^{\circ}\text{C}$ to +85 $^{\circ}\text{C}$ |
| Storage Temperature Range | -65 $^{\circ}\text{C}$ to +150 $^{\circ}\text{C}$ |

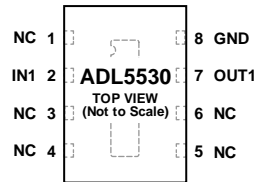
Stresses at or above those listed under Absolute Maximum Ratings may cause permanent damage to the product. This is a stress rating only; functional operation of the product at these or any other conditions above those indicated in the operational section of this specification is not implied. Operation beyond the maximum operating conditions for extended periods may affect product reliability.

ESD CAUTION



ESD (electrostatic discharge) sensitive device. Charged devices and circuit boards can discharge without detection. Although this product features patented or proprietary protection circuitry, damage may occur on devices subjected to high energy ESD. Therefore, proper ESD precautions should be taken to avoid performance degradation or loss of functionality.

PIN CONFIGURATION AND FUNCTION DESCRIPTIONS



NOTES
 1. NC = NO CONNECT.
 2. THE EXPOSED PADDLE IS INTERNALLY CONNECTED TO GND. SOLDER TO A LOW IMPEDANCE GROUND PLANE.

05834-002

Figure 2. Pin Configuration

Table 4. Pin Function Descriptions

| Pin No. | Mnemonic | Description |
|----------------|---------------|---|
| 1, 3, 4, 5, 6 | NC | No Connect. |
| 2 | IN1 | RF Input. Requires a DC blocking capacitor. |
| 7 | OUT1/ VPOS | RF Output and VPOS (Supply Voltage). DC bias is provided to this pin through an inductor. RF path requires a DC blocking capacitor. |
| 8 | GND | Ground. Connect this pin to a low impedance ground plane. |
| Exposed Paddle | | Internally connected to GND. Solder to a low impedance ground plane. |

TYPICAL PERFORMANCE CHARACTERISTICS

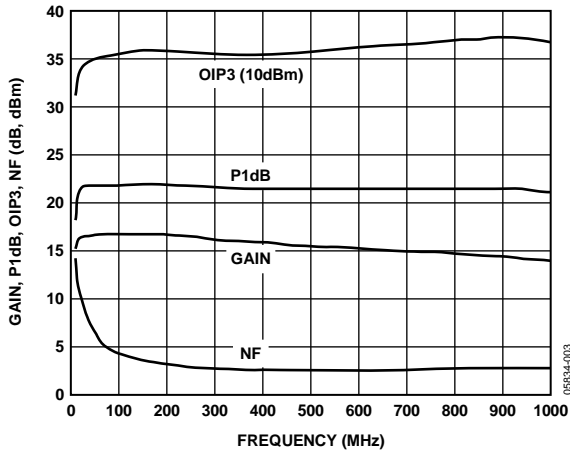


Figure 3. Gain, P1dB, OIP3, and Noise Figure vs. Frequency, VPOS = 5 V

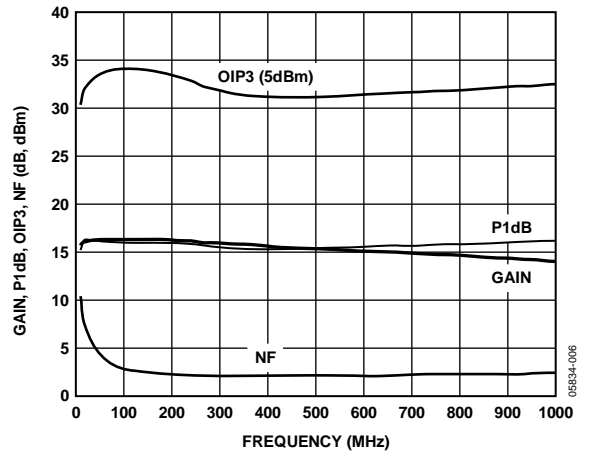


Figure 6. Gain, P1dB, OIP3, and Noise Figure vs. Frequency, VPOS = 3 V

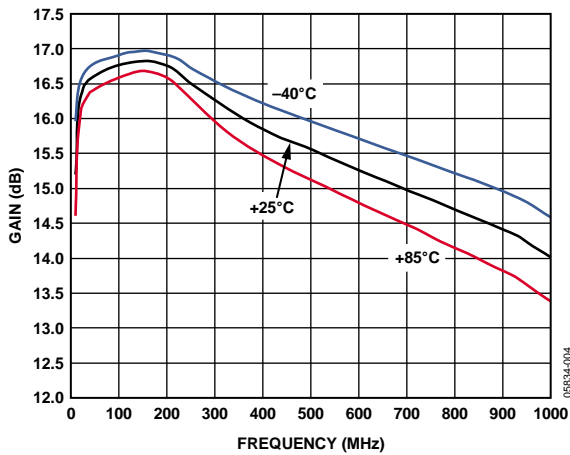


Figure 4. Gain vs. Frequency and Temperature, VPOS = 5 V

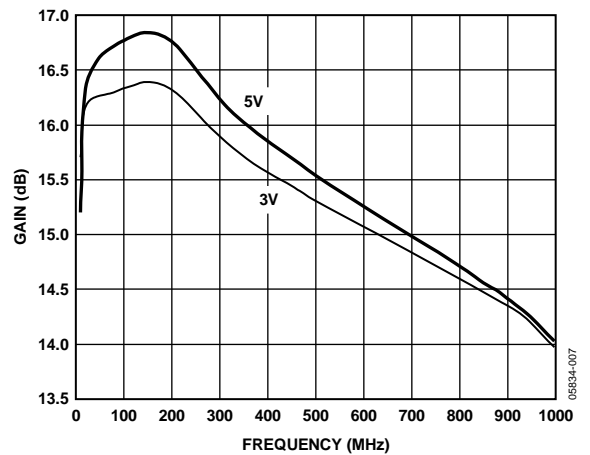


Figure 7. Gain vs. Frequency and Supply, VPOS = 5 V and 3 V

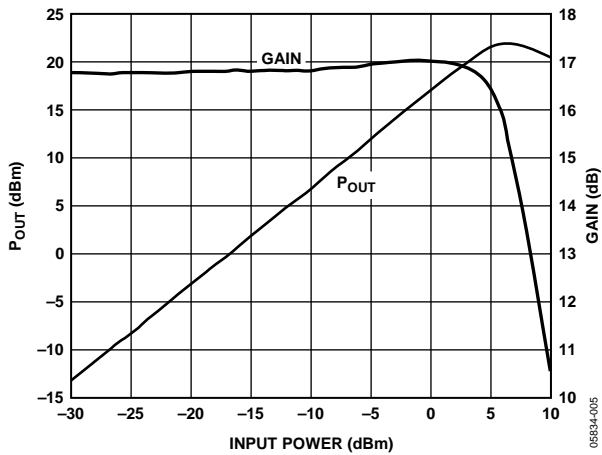


Figure 5. Output Power and Gain vs. Input Power, $f = 190$ MHz, VPOS = 5 V

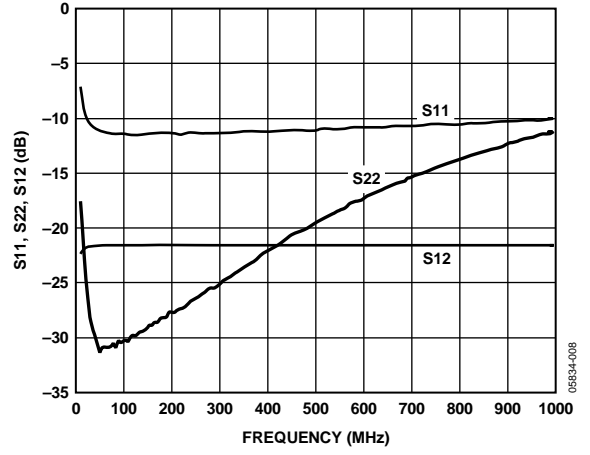


Figure 8. Input Return Loss, Output Return Loss, and Reverse Isolation vs. Frequency, VPOS = 5 V

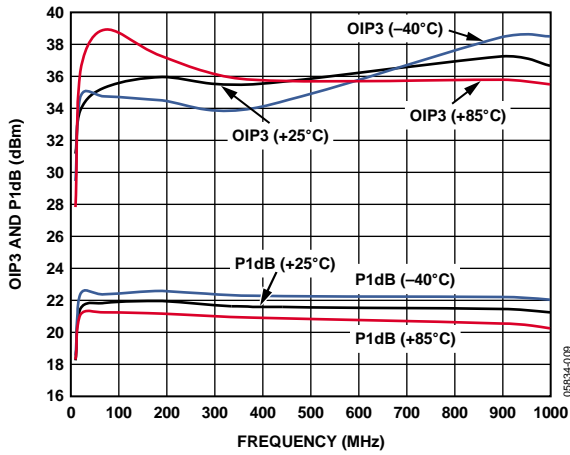


Figure 9. OIP3 and P1dB vs. Frequency and Temperature, VPOS = 5 V

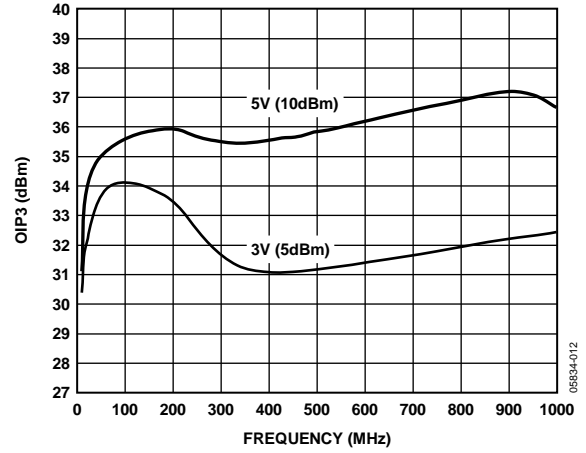


Figure 12. OIP3 vs. Frequency and Supply, VPOS = 5 V and 3 V

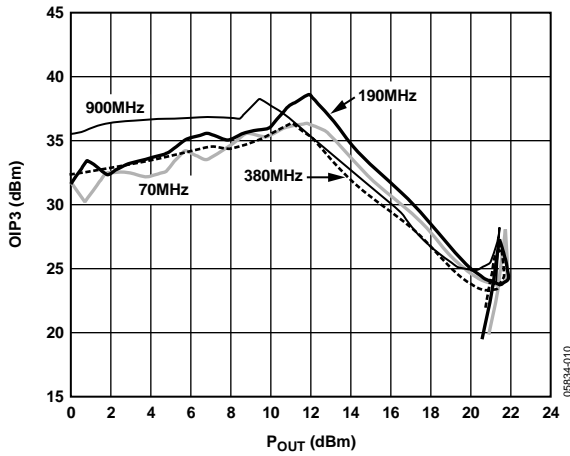


Figure 10. OIP3 vs. Output Power and Frequency, VPOS = 5 V

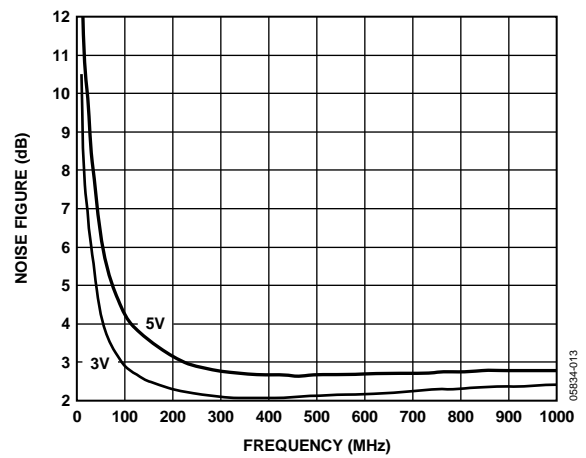


Figure 13. Noise Figure vs. Frequency and Supply, VPOS = 5 V and 3 V

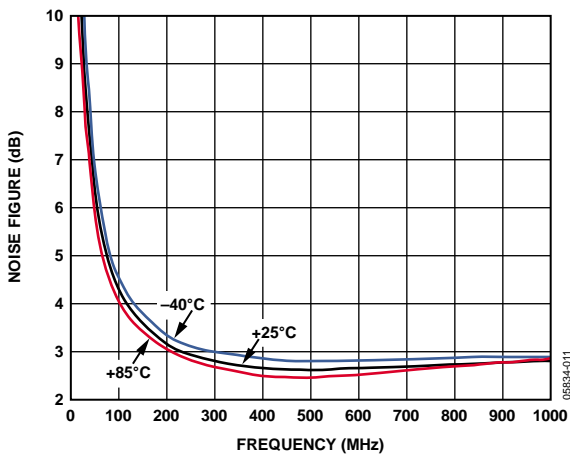


Figure 11. Noise Figure vs. Frequency and Temperature, VPOS = 5 V

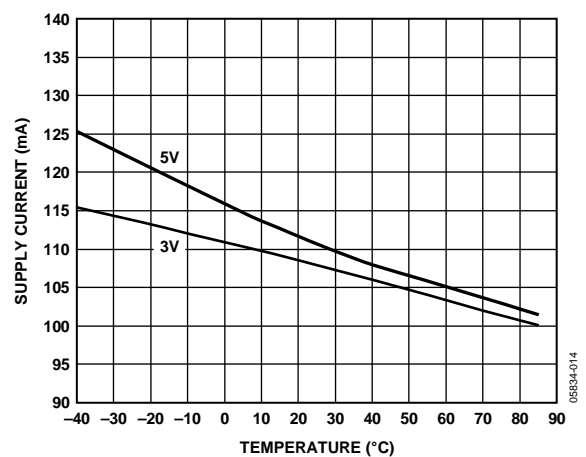


Figure 14. Supply Current vs. Temperature and Supply, VPOS = 5 V and 3 V

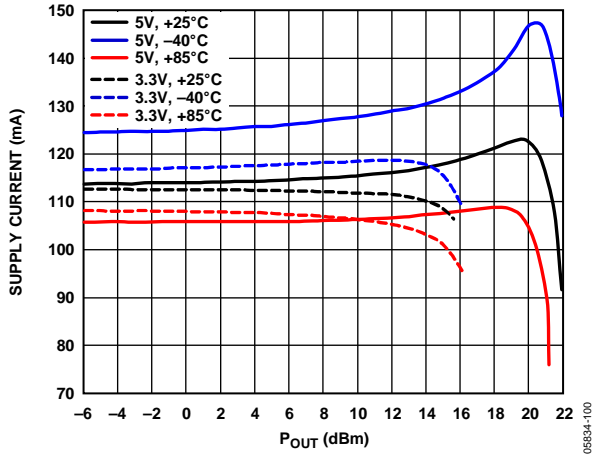


Figure 15. Supply Current vs. P_{OUT} and Temperature and Supply, V_{POS} = 5 V and 3 V

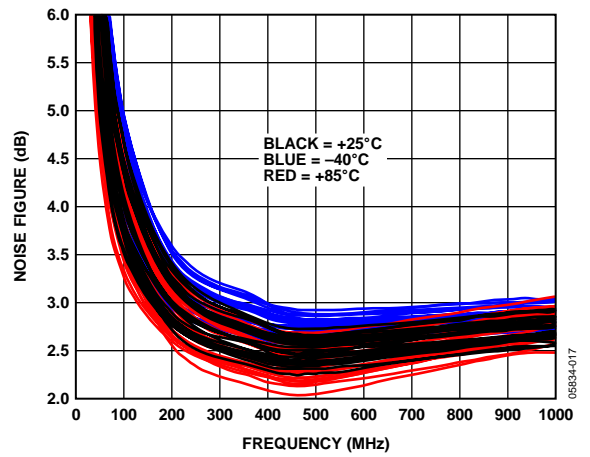


Figure 18. Noise Figure Temperature Distribution, V_{POS} = 5 V

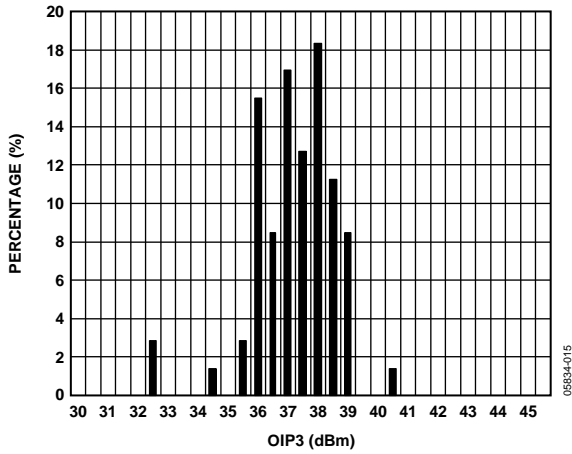


Figure 16. OIP3 Distribution at 190 MHz, 5 V

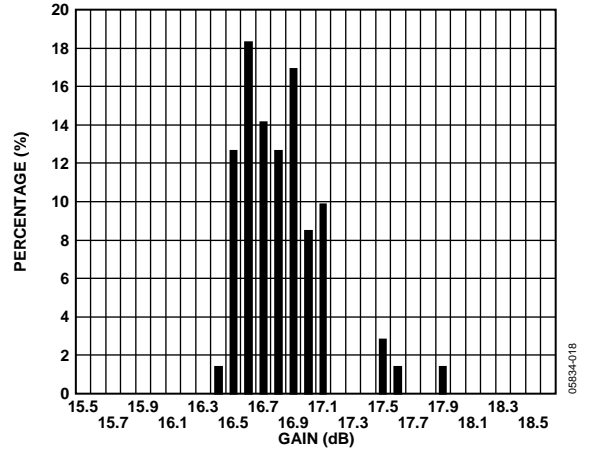


Figure 19. Gain Distribution at 190 MHz, V_{POS} = 5 V

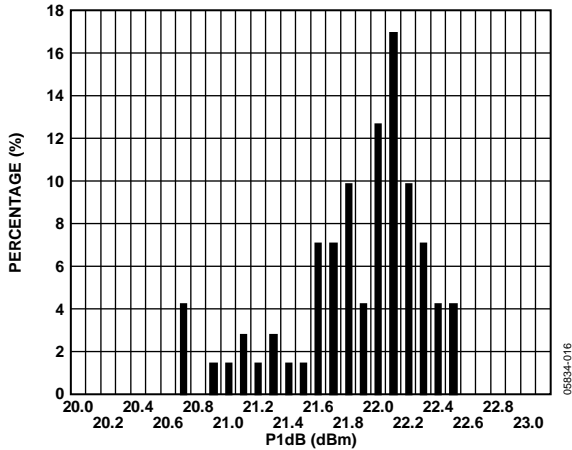


Figure 17. P1dB Distribution at 190 MHz, V_{POS} = 5 V

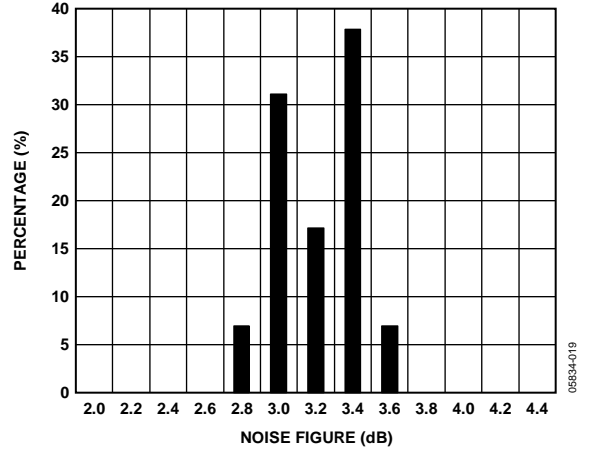


Figure 20. Noise Figure Distribution at 190 MHz, V_{POS} = 5 V

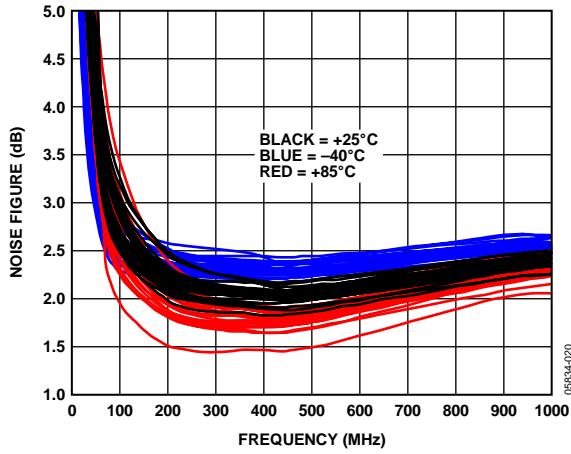


Figure 21. Noise Figure Temperature Distribution, VPOS = 3 V

THEORY OF OPERATION

The basic connections for operating the ADL5530 are shown in Figure 22. Recommended components are listed in Table 5. The inputs and outputs should be ac coupled with appropriately sized capacitors (device characterization was performed with 10 nF capacitors). DC bias is provided to the amplifier via an inductor connected to the RF output pin. The bias voltage should be decoupled using a 10 nF capacitor.

A bias voltage of 5 V is recommended. However, the device is specified to operate down to 3 V with a slightly reduced compression point and a reduced noise figure.

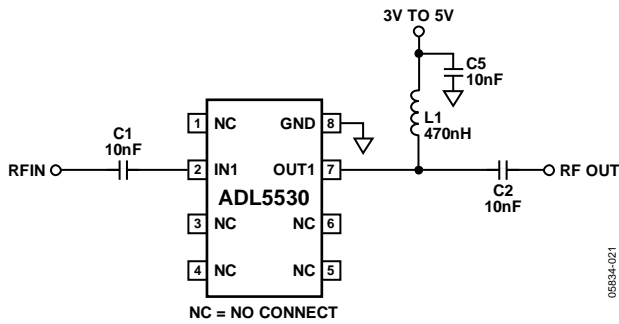


Figure 22. Basic Connections

For operation down to 10 MHz, a larger biasing choke is recommended (see Table 5) along with larger ac-coupling capacitors. Figure 23 shows a plot of input return loss and gain with the recommended components.

Table 5. Recommended Components for Basic Connections

| Frequency | C1 | C2 | L1 | C5 |
|--------------------|-------------|-------------|-------------|-------------|
| 10 MHz to 50 MHz | 0.1 μ F | 0.1 μ F | 3.3 μ H | 0.1 μ F |
| 50 MHz to 1000 MHz | 10 nF | 10 nF | 470 nH | 10 nF |

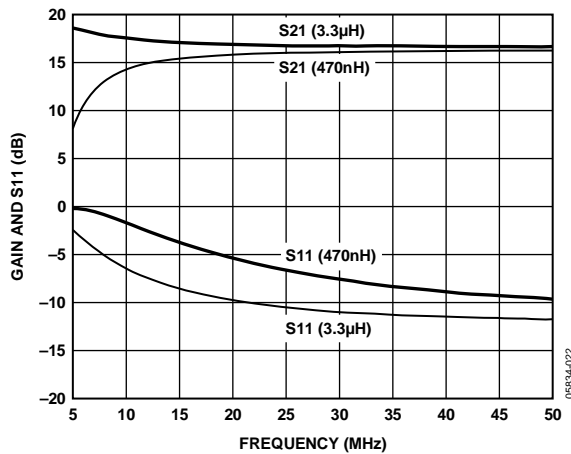


Figure 23. Performance at 10 MHz

SOLDERING INFORMATION AND RECOMMENDED PCB LAND PATTERN

Figure 24 shows the recommended land pattern for ADL5530. To minimize thermal impedance, the exposed paddle on the package underside should be soldered down to a ground plane along with Pin 8. If multiple ground layers exist, they should be stitched together using vias. Pin 1, Pin 3, Pin 4, Pin 5 and Pin 6 can be left unconnected, or can be connected to ground. Connecting these pins to ground slightly enhances thermal impedance.

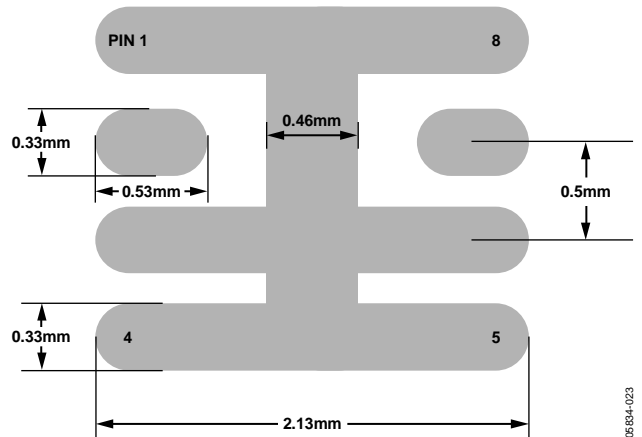


Figure 24. Recommended Land Pattern

EVALUATION BOARD

Figure 25 shows the schematic for the [ADL5530](#) evaluation board. The board is powered by a single supply (between 3 V and 5 V).

The components used on the board are listed in Table 6. Power can be applied to the board through clip-on leads (J5, J6), through an edge connector (P1), or through Jumper W1. Note that IN2, OUT2, T1, T2, C6, C7 and C10 have no function. Because Pin 1, Pin 3 and Pin 6 of [ADL5530](#) are No Connects, these pins are grounded on this PCB (this has no effect on electrical performance).

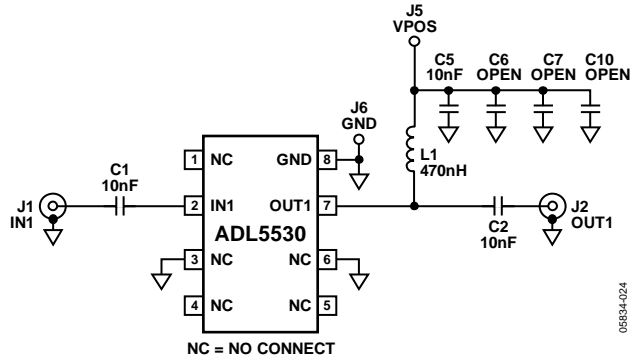


Figure 25. Evaluation Board Schematic

05834-024

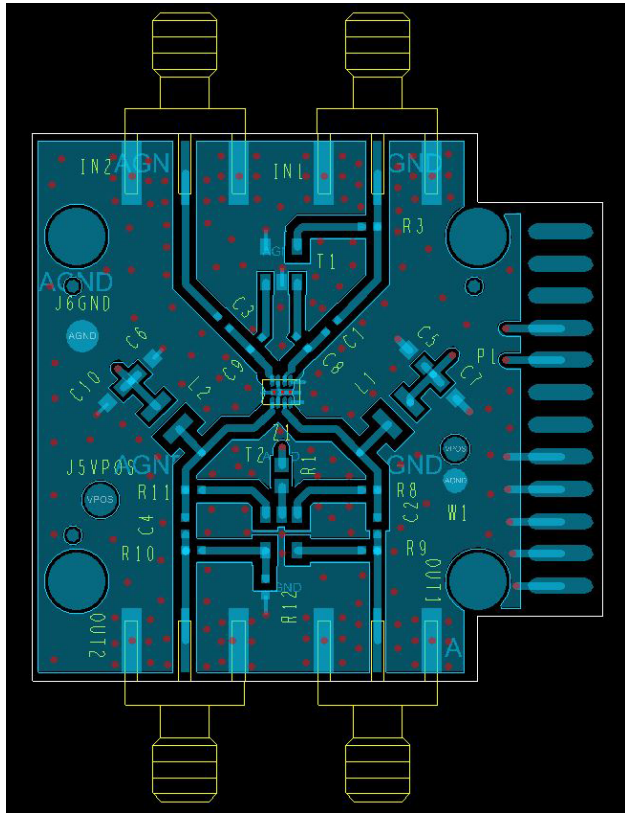


Figure 26. Evaluation Board Layout, Top Layer

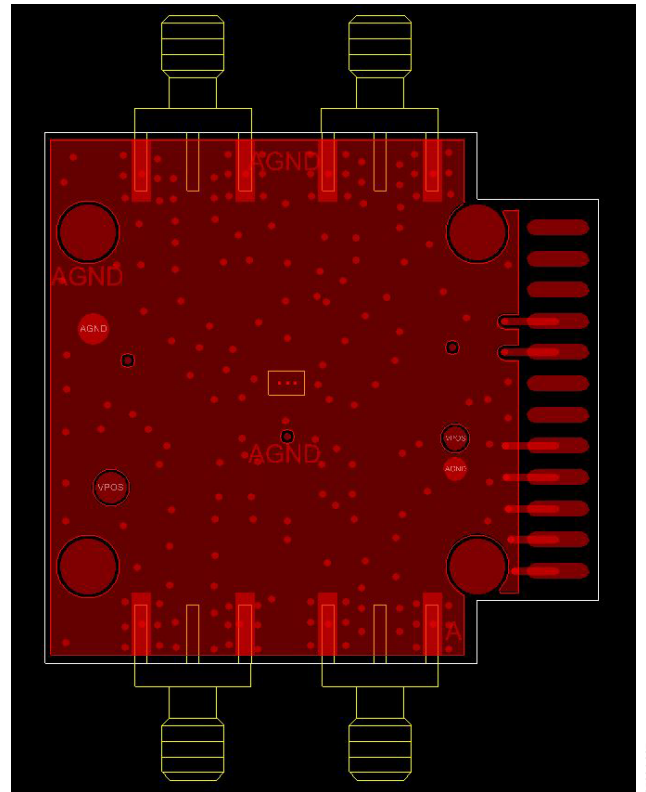
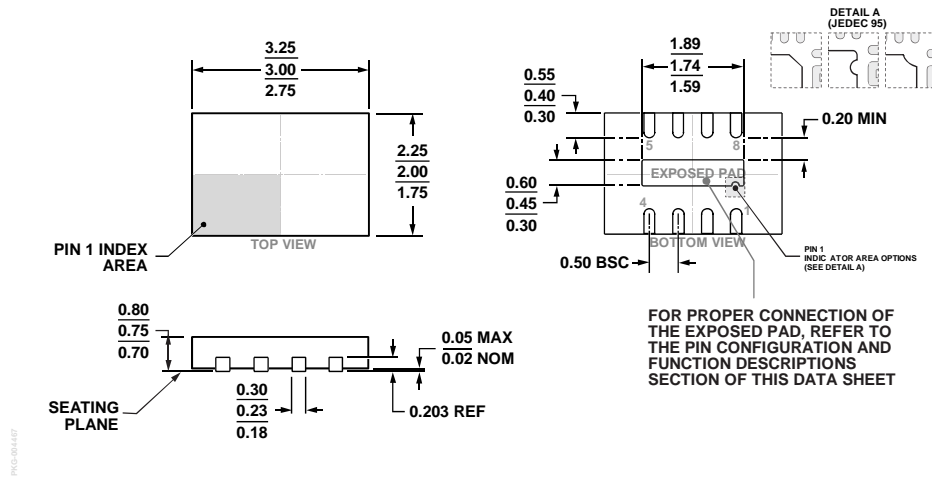


Figure 27. Evaluation Board Layout, Bottom Layer

Table 6. Evaluation Board Configuration Options

| Component | Function | Default Value |
|-----------|---|--|
| C1, C2 | AC-coupling capacitors. | 10 nF 0402 |
| C5 | Power supply decoupling capacitor. | 10 nF 0603 |
| L1 | DC bias inductor. | 470 nH 1008 |
| J5, J6 | Clip-on terminals for power supply. | J5 = VPOS J6 = GND |
| W1 | 2-pin jumper for connection of ground and supply via cable. | |
| P1 | Edge connector. | P1: A1 to A5 = GND P1: B1 to B5 = GND P1: A8 to A9 = VPOS P1: B8 to B9 = VPOS |

OUTLINE DIMENSIONS



ORDERING GUIDE

| Model ¹ | Temperature Range | Package Description | Package Option | Branding |
|--------------------|-------------------|--------------------------------|----------------|----------|
| ADL5530ACPZ-R7 | -40°C to +85°C | 8-Lead LFCSP, 7" Tape and Reel | CP-8-23 | OT |
| ADL5530ACPZ-WP | -40°C to +85°C | 8-Lead LFCSP, Waffle Pack | CP-8-23 | OT |
| ADL5530-EVALZ | | Evaluation Board | | |

¹ Z = RoHS Compliant Part.

NOTES

NOTES

X-ON Electronics

Largest Supplier of Electrical and Electronic Components

Click to view similar products for [RF Amplifier](#) category:

Click to view products by [Analog Devices](#) manufacturer:

Other Similar products are found below :

[A82-1](#) [BGA622H6820XTSA1](#) [BGA 728L7 E6327](#) [BGB719N7ESDE6327XTMA1](#) [HMC397-SX](#) [HMC405](#) [HMC561-SX](#) [HMC8120-SX](#)
[HMC8121-SX](#) [HMC-ALH382-SX](#) [HMC-ALH476-SX](#) [SE2433T-R](#) [SMA3101-TL-E](#) [SMA39](#) [A66-1](#) [A66-3](#) [A67-1](#) [A81-2](#) [LX5535LQ](#)
[LX5540LL](#) [MAAM02350](#) [HMC3653LP3BETR](#) [HMC549MS8GETR](#) [HMC-ALH435-SX](#) [SMA101](#) [SMA32](#) [SMA411](#) [SMA531](#)
[SST12LP19E-QX6E](#) [WPM0510A](#) [HMC5929LS6TR](#) [HMC5879LS7TR](#) [HMC1087F10](#) [HMC1086](#) [HMC1016](#) [SMA1212](#) [MAX2689EWS+T](#)
[MAAMSS0041TR](#) [MAAM37000-A1G](#) [LTC6430AIUF-15#PBF](#) [SMA70-2](#) [SMA4011](#) [A231](#) [HMC-AUH232](#) [LX5511LQ](#) [LX5511LQ-TR](#)
[HMC7441-SX](#) [HMC-ALH310](#) [XD1001-BD-000V](#) [A4011](#)