

LTC2642A-16

16-Bit Unbuffered V_{OUT} DAC

DESCRIPTION

Demonstration circuit 1096B features the LTC[®]2642A-16, a 16-bit voltage output DAC. The LTC2642A-16 output is unbuffered, allowing it to swing all the way to the supply rails.

DC1096B is a member of Linear Technology's QuikEval™ family of demonstration boards. It is designed to allow easy evaluation of the LTC2642A-16 and may be connected directly to the target application's analog signals while using the DC590 USB serial controller board and supplied software to measure performance. The exposed ground

planes allow proper grounding to prototype circuitry. After evaluating with Linear Technology's software, the digital signals can be connected to the end application's processor/controller for development of the serial interface.

Design files for this circuit board are available at <http://www.linear.com/demo/DC1096>

LT, LT, LTC, LTM, Linear Technology and the Linear logo are registered trademarks and QuikEval is a trademark of Linear Technology Corporation. All other trademarks are the property of their respective owners.

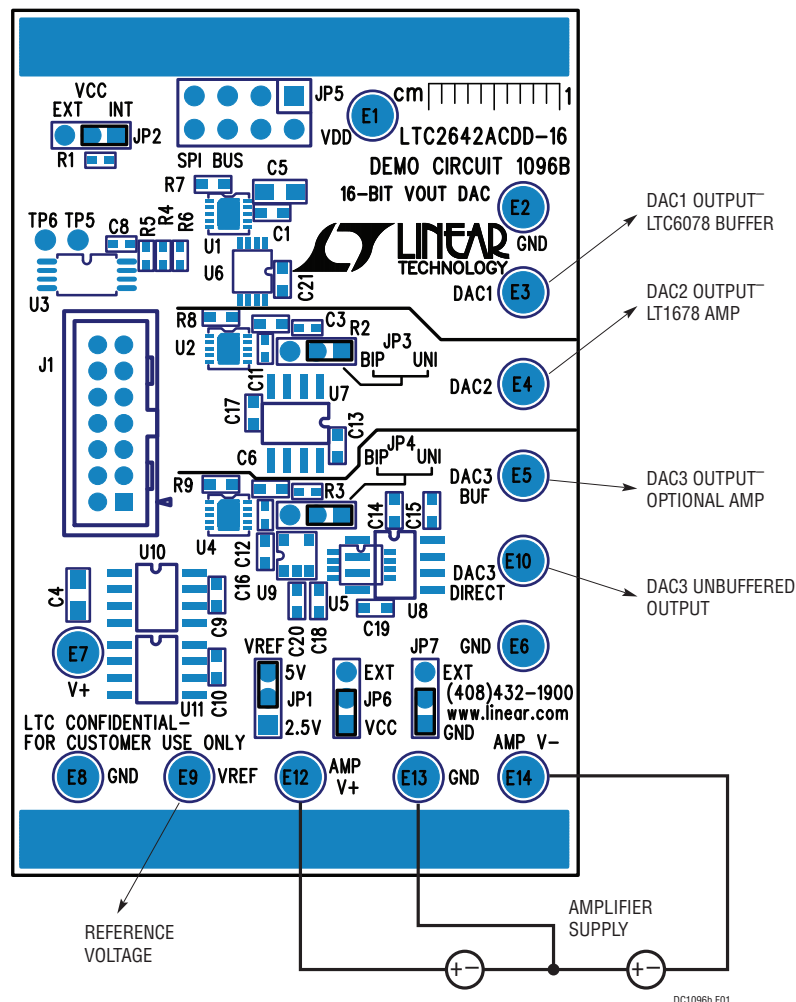


Figure 1. Connection Diagram

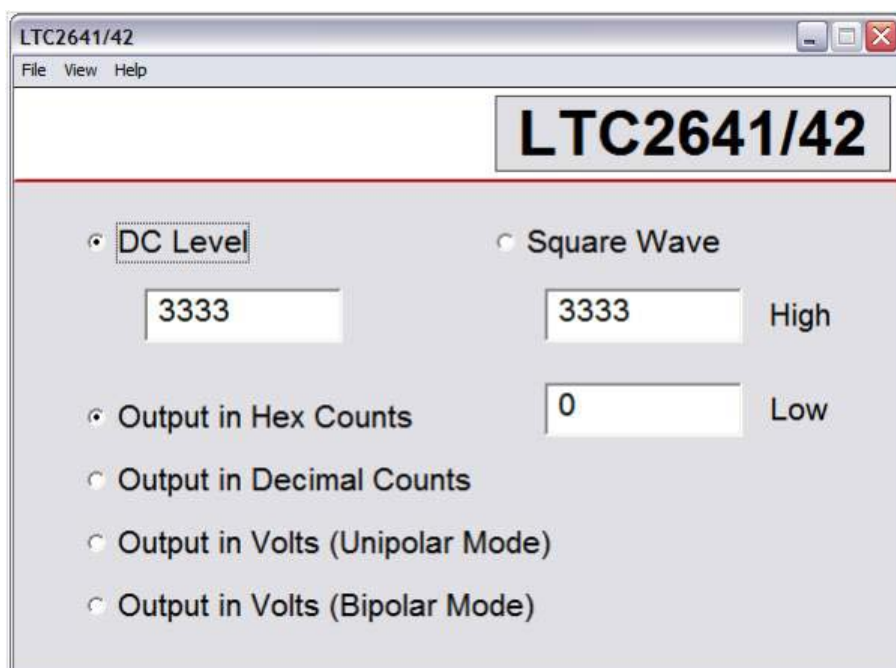
QUICK START PROCEDURE

Connect DC1096B to a DC590 USB serial controller using the supplied 14-conductor ribbon cable. Connect DC590 to host PC with a standard USB A/B cable. Run the evaluation software supplied with DC590 or downloaded from www.linear.com/software. The correct program will be loaded automatically. By default, the control program will load a DC value into the LTC2642A-16. The value may be changed by typing hexadecimal counts (0000 - FFFF), or decimal counts (0 – 65535), or the voltage desired depending on the option selected. Setting the software

to unipolar or bipolar will not set the hardware to bipolar mode. The jumpers need to be placed in their proper positions in order to accomplish this.

The other option is a square wave output. The frequency of the square wave is not tightly controlled; it is intended to allow measurement of settling time and glitch impulse.

Features may be periodically added to the software, see the software's help menu for the latest information.



HARDWARE SETUP

POWER CONNECTIONS

A low noise, bipolar power supply can be connected to the AMPV⁺, AMPV⁻, and GND turret posts.

If an external supply is connected, the respective jumpers must be placed in the EXT position.

This provides power to the LT1678 amplifier and optional amplifiers U5, U8, or U9. The LT1678 will work with supplies as high as $\pm 15V$, consult the data sheet for supply limitations on any optional amplifiers that are installed.

JUMPERS

JP1: Select the source for REF⁺, either 2.5V or 5V from the onboard LT1019 or LT1236 reference (default – 5V)

JP2: Select the V_{CC} source, either provided by a connected DC590 or an external source.

JP3: Sets DAC2 to either unipolar or bipolar mode. In bipolar mode, set JP6 and JP7 to EXT and apply an appropriate supply to AMP V⁺, AMP V⁻, and GND turret posts.

JP4: Sets DAC3 to either unipolar or bipolar mode. In bipolar mode, set JP6 and JP7 to EXT and apply an appropriate supply to AMP V⁺, AMP V⁻, and GND turret posts.

JP6: Sets V⁺ for the amplifiers to either external (AMP V⁺) or V_{CC}.

JP7: Sets V⁻ for the amplifiers to either external (AMP V⁻) or ground.

CONNECTION TO DC590 SERIAL CONTROLLER

J1 is the power and digital interface connector. Connect to DC590 serial controller with supplied 14-conductor ribbon cable.

OUTPUT CONNECTIONS

E3 is the output from U1, which is buffered by an LTC6078 op amp.

E4 is the output from U2, which is buffered by an LT1678 op amp. JP3 allows this DAC to be configured for either unipolar or bipolar operation.

E5 is the buffered output of U4, if an optional amplifier is installed. There are three standard op amp footprints that allow other amplifiers to be evaluated.

E10 is directly connected to U4's output.

REFERENCE CONNECTIONS

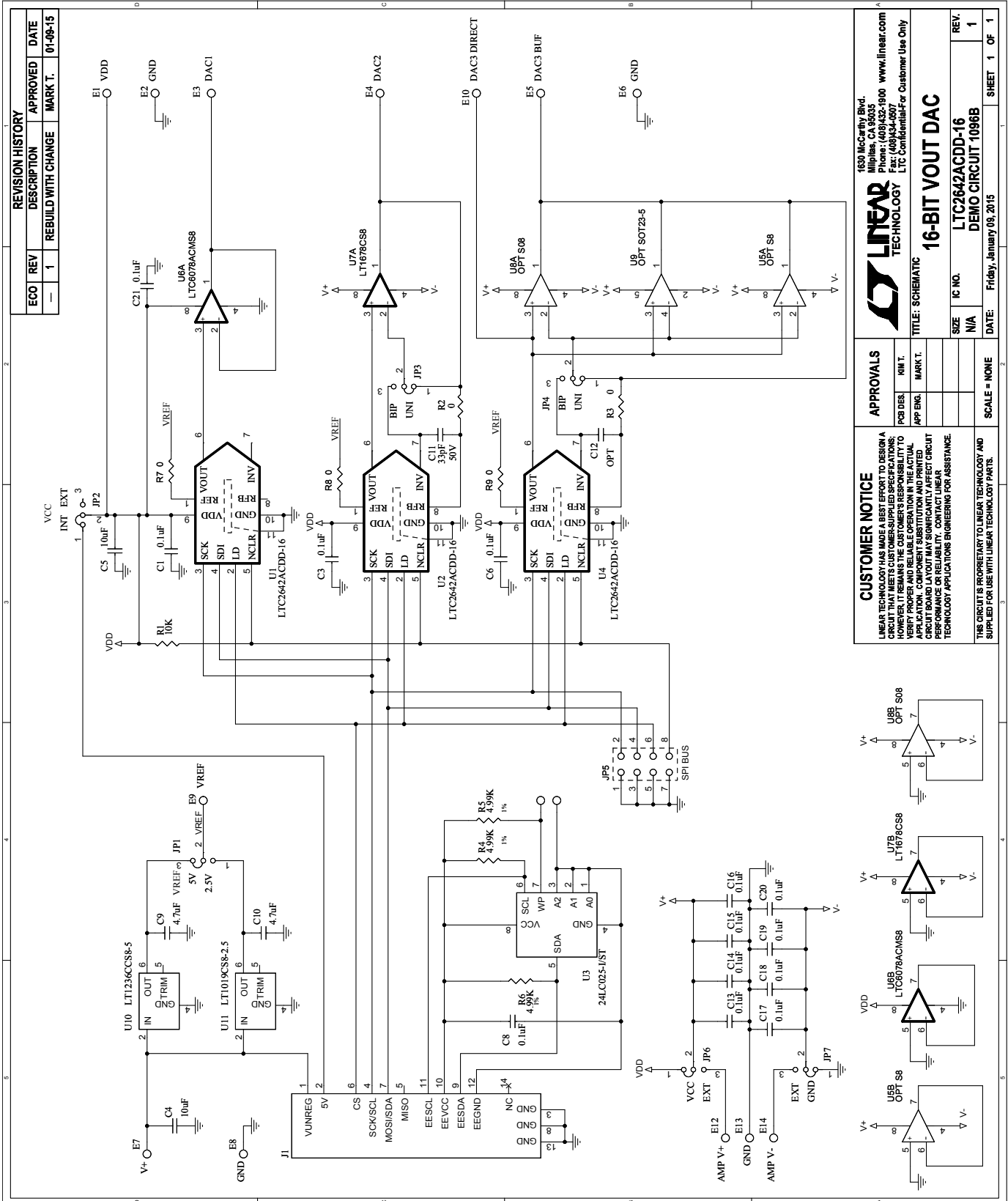
JP1 selects between the onboard 5V reference and the onboard 2.5V reference. The reference voltage can be monitored on E9, or an external reference may be applied to E9 if JP1 is removed.

DEMO MANUAL DC1096B

PARTS LIST

ITEM	QTY	REFERENCE	PART DESCRIPTION	MANUFACTURER/PART NUMBER
1	12	C1, C3, C6, C13-C21	CAP, 0603 0.1 μ F 10% 25V X7R	AVX 06033C104KAT
2	2	C4, C5	CAP, 0805 10 μ F 20% 10V X5R	TDK C2012X5R1A106M125AB
3	1	C8	CAP, 0402 0.1 μ F 20% 16V X7R	TDK C1005X7R1C104M050BC
4	2	C10, C9	CAP, 0603 4.7 μ F 20% 6.3V X5R	TDK C1608X5R0J475M080AB
5	1	C11	CAP, 0402 33pF 10% 50V NPO	AVX, 04025A330KAT2A
6	0	C12	CAP, 0402 OPTION	TDK C1005X7R1E103K050BB
7	13	E1-E10, E12-E14	TURRET	MILL-MAX 2308-2-00-80-00-00-07-0
8	6	JP1-JP4, JP6, JP7	HEADER, 3PIN 2mm	SULLINS, NRPNO31PAEN-RC
9	1	JP5	HEADER, 2X4 0.100 CENTERS	WÜRTH ELEKTRONIK, 61300821121
10	1	J1	HEADER, 2X7 2mm	MOLEX 87831-1420
11	1	R1	RES, 0402 10k 5% 1/16W	VISHAY CRCW040210K0JNED
12	2	R3, R2	RES, 0402 0 Ω JUMPER	VISHAY CRCW04020000Z0ED
13	3	R4, R5, R6	RES, 0402 4.99k 1% 1/16W	VISHAY CRCW04024K99FKED
14	3	R7, R8, R9	RES, 0603 0 Ω JUMPER	VISHAY CRCW06030000Z0EA
15	3	U1, U2, U4	IC, LTC2642ACDD-16	LINEAR TECH. LTC2642ACDD-16
16	1	U3	IC, 24LC025-I/ST	MICROCHIP TECH. 24LC025-I/ST
17	0	U5, U8, U9	IC, OPTION	OPTION
18	1	U6	IC, LTC6078ACMS8	LINEAR TECH LTC6078ACMS8
19	1	U7	IC, LT1678CS8#PBF	LINEAR TECH LT1678CS8#PBF
20	1	U10	IC, VOLTAGE REG 5V	LINEAR TECH. LT1236CCS8-5#PBF
21	1	U11	IC, VOLTAGE REG 2.5V	LINEAR TECH. LT1019CS8-2.5#PBF
22	6	JP1-JP4, JP6, JP7	SHUNT	SAMTEC 2SN-BK-G
23	1	JP5	SHUNT, 0.100	WÜRTH ELEKTRONIK, 60900213421

SCHEMATIC DIAGRAM



REVISION HISTORY				
ECO	REV	DESCRIPTION	APPROVED	DATE
—	1	REBUILD WITH CHANGE	MARK T.	01-08-15

1630 McCarthy Blvd.
Folsom, CA 95635
Phone: (916)435-1000 www.linear.com
Fax: (916)435-1001
LTC Confidential for Customer Use Only

LINEAR TECHNOLOGY

16-BIT VOUT DAC

IC NO. LTC2642ACDD-16
REV. 1
DEMO CIRCUIT 1096B

DATE: Friday, January 09, 2015
SHEET 1 OF 1

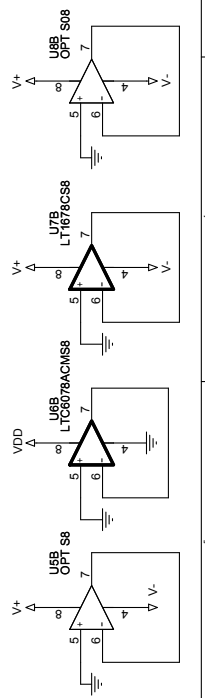
SCALE = NONE

APPROVALS

PCB DES.	KIM T.
APP ENG.	MARK T.

CUSTOMER NOTICE: LINEAR TECHNOLOGY PROVIDES THIS CIRCUIT AS A REFERENCE DESIGN. CUSTOMERS ARE RESPONSIBLE FOR VERIFYING THE PERFORMANCE OF THIS CIRCUIT IN THEIR APPLICATION. CUSTOMERS SHOULD CONTACT LINEAR TECHNOLOGY APPLICATIONS ENGINEERING FOR ASSISTANCE.

THIS CIRCUIT IS PROPRIETARY TO LINEAR TECHNOLOGY AND SUPPLIED FOR USE WITH LINEAR TECHNOLOGY PARTS.



Information furnished by Linear Technology Corporation is believed to be accurate and reliable. However, no responsibility is assumed for its use. Linear Technology Corporation makes no representation that the interconnection of its circuits as described herein will not infringe on existing patent rights.

DEMO MANUAL DC1096B

DEMONSTRATION BOARD IMPORTANT NOTICE

Linear Technology Corporation (LTC) provides the enclosed product(s) under the following **AS IS** conditions:

This demonstration board (DEMO BOARD) kit being sold or provided by Linear Technology is intended for use for **ENGINEERING DEVELOPMENT OR EVALUATION PURPOSES ONLY** and is not provided by LTC for commercial use. As such, the DEMO BOARD herein may not be complete in terms of required design-, marketing-, and/or manufacturing-related protective considerations, including but not limited to product safety measures typically found in finished commercial goods. As a prototype, this product does not fall within the scope of the European Union directive on electromagnetic compatibility and therefore may or may not meet the technical requirements of the directive, or other regulations.

If this evaluation kit does not meet the specifications recited in the DEMO BOARD manual the kit may be returned within 30 days from the date of delivery for a full refund. **THE FOREGOING WARRANTY IS THE EXCLUSIVE WARRANTY MADE BY THE SELLER TO BUYER AND IS IN LIEU OF ALL OTHER WARRANTIES, EXPRESSED, IMPLIED, OR STATUTORY, INCLUDING ANY WARRANTY OF MERCHANTABILITY OR FITNESS FOR ANY PARTICULAR PURPOSE. EXCEPT TO THE EXTENT OF THIS INDEMNITY, NEITHER PARTY SHALL BE LIABLE TO THE OTHER FOR ANY INDIRECT, SPECIAL, INCIDENTAL, OR CONSEQUENTIAL DAMAGES.**

The user assumes all responsibility and liability for proper and safe handling of the goods. Further, the user releases LTC from all claims arising from the handling or use of the goods. Due to the open construction of the product, it is the user's responsibility to take any and all appropriate precautions with regard to electrostatic discharge. Also be aware that the products herein may not be regulatory compliant or agency certified (FCC, UL, CE, etc.).

No License is granted under any patent right or other intellectual property whatsoever. **LTC assumes no liability for applications assistance, customer product design, software performance, or infringement of patents or any other intellectual property rights of any kind.**

LTC currently services a variety of customers for products around the world, and therefore this transaction **is not exclusive**.

Please read the DEMO BOARD manual prior to handling the product. Persons handling this product must have electronics training and observe good laboratory practice standards. **Common sense is encouraged.**

This notice contains important safety information about temperatures and voltages. For further safety concerns, please contact a LTC application engineer.

Mailing Address:

Linear Technology
1630 McCarthy Blvd.
Milpitas, CA 95035

Copyright © 2004, Linear Technology Corporation

X-ON Electronics

Largest Supplier of Electrical and Electronic Components

Click to view similar products for [Data Conversion IC Development Tools](#) category:

Click to view products by [Analog Devices](#) manufacturer:

Other Similar products are found below :

[EVAL-AD5063EBZ](#) [EVAL-AD5422LFEBZ](#) [EVAL-AD7265EDZ](#) [EVAL-AD7641EDZ](#) [EVAL-AD7674EDZ](#) [EVAL-AD7719EBZ](#) [EVAL-AD7767-1EDZ](#) [EVAL-AD7995EBZ](#) [AD9114-DPG2-EBZ](#) [AD9211-200EBZ](#) [AD9251-20EBZ](#) [AD9251-65EBZ](#) [AD9255-125EBZ](#) [AD9284-250EBZ](#) [AD9613-170EBZ](#) [AD9627-125EBZ](#) [AD9629-20EBZ](#) [AD9709-EBZ](#) [AD9716-DPG2-EBZ](#) [AD9737A-EBZ](#) [AD9787-DPG2-EBZ](#) [AD9993-EBZ](#) [DAC8555EVM](#) [ADS5482EVM](#) [ADS8372EVM](#) [EVAL-AD5061EBZ](#) [EVAL-AD5062EBZ](#) [EVAL-AD5443-DBRDZ](#) [EVAL-AD5570SDZ](#) [EVAL-AD7450ASDZ](#) [EVAL-AD7677EDZ](#) [EVAL-AD7992EBZ](#) [EVAL-AD7994EBZ](#) [AD9119-MIX-EBZ](#) [AD9148-M5375-EBZ](#) [AD9204-80EBZ](#) [AD9233-125EBZ](#) [AD9265-105EBZ](#) [AD9265-80EBZ](#) [AD9608-125EBZ](#) [AD9629-80EBZ](#) [AD9648-125EBZ](#) [AD9649-20EBZ](#) [AD9650-80EBZ](#) [AD9765-EBZ](#) [AD9767-EBZ](#) [AD9778A-DPG2-EBZ](#) [ADS8322EVM](#) [LM96080EB/NOPB](#) [EVAL-AD5445SDZ](#)