

## LTC4009-2 Multicell Li-Ion Battery Charger Board

### DESCRIPTION

Demonstration circuit 1104B is a single-battery stand-alone charge controller with built-in charge termination featuring the [LTC®4009-2](#). The input voltage is 13.5V to 20V. The charger output voltage is programmed by jumpers to support 1-, 2-, 3- and 4-cell Li-Ion batteries with a cell voltage of 4.2V/cell. The maximum charge current is 2A. The demo board is initially configured for 12.6V Li-Ion batteries. The board will automatically charge a battery as soon as input power is applied with a battery connected prior to power up. Status LEDs are provided for CHG, ACP, C/10, and ICL although this charger is not a smart battery charger, a popular smart battery connector is provided that can be used for data-logging with the optional DC410

demo board and software. To be clear, you do not need a smart battery to use this board. The optional DC410 SMBus-to-Serial port adapter and associated software is to monitor a smart battery for demonstration purposes only. Contact your Analog Devices representative for ordering a DC410.

This demo board is capable of supporting the LTC4009 and LTC4009-1 with a simple IC swap out. See schematic.

**Design files for this circuit board are available at <http://www.linear.com/demo/DC1104B>**

All registered trademarks and trademarks are the property of their respective owners.

### PERFORMANCE SUMMARY Specifications are at $T_A = 25^\circ\text{C}$

PARAMETER	CONDITIONS/NOTES	VALUE
Maximum Input Voltage	Limited by Input Capacitor Volt Ratings	20V $\pm$ 10 %
Default Battery Charge Voltage	Jumper Selectable: 4.2V, 8.4V, 12.6V and 16.8V	12.6V
Minimum Input Voltage	$V_{IN} > V_{BAT}$ Termination Voltage and $DCDIV > 1.2V$	13.5V When Using a 12.6V Li-ion Battery Recommend 15V
Shutdown Configuration	$V_{IN} > V_{BATMAX} > 6V$ , Jumper Selectable: OFF, THM and ON	ON
Input Current Limit	Set by Value of R2 at 100mV	2A Using a 0.05 $\Omega$ Resistor
Maximum Charge Current	$V_{IN} > V_{BAT} > 6V$ and $DCDIV > 1.2V$	2A $\pm$ 5%

# DEMO MANUAL DC1104B

## QUICK START PROCEDURE

1. Connect the input power source to  $V_{IN}$  terminals J1 or  $V_{IN}$  and GND using a power supply capable of handling 2.5A of current within a 13.5V to 20V range. The input supply voltage must be greater than the full voltage value of the battery to allow a full charge to take place.
2. Connect the load to  $V_{OUT}$  and GND terminals.
3. Configure the jumpers for your specific battery.
4. Plug in the battery. Industry-standard 5-pin AMP smart battery connector is provided as well as generic soldering test points for hard-wire connections.
5. Turn on the input power supply.
6. Optionally use the provided DC410 demonstration software to configure and communicate with the DC1104B.

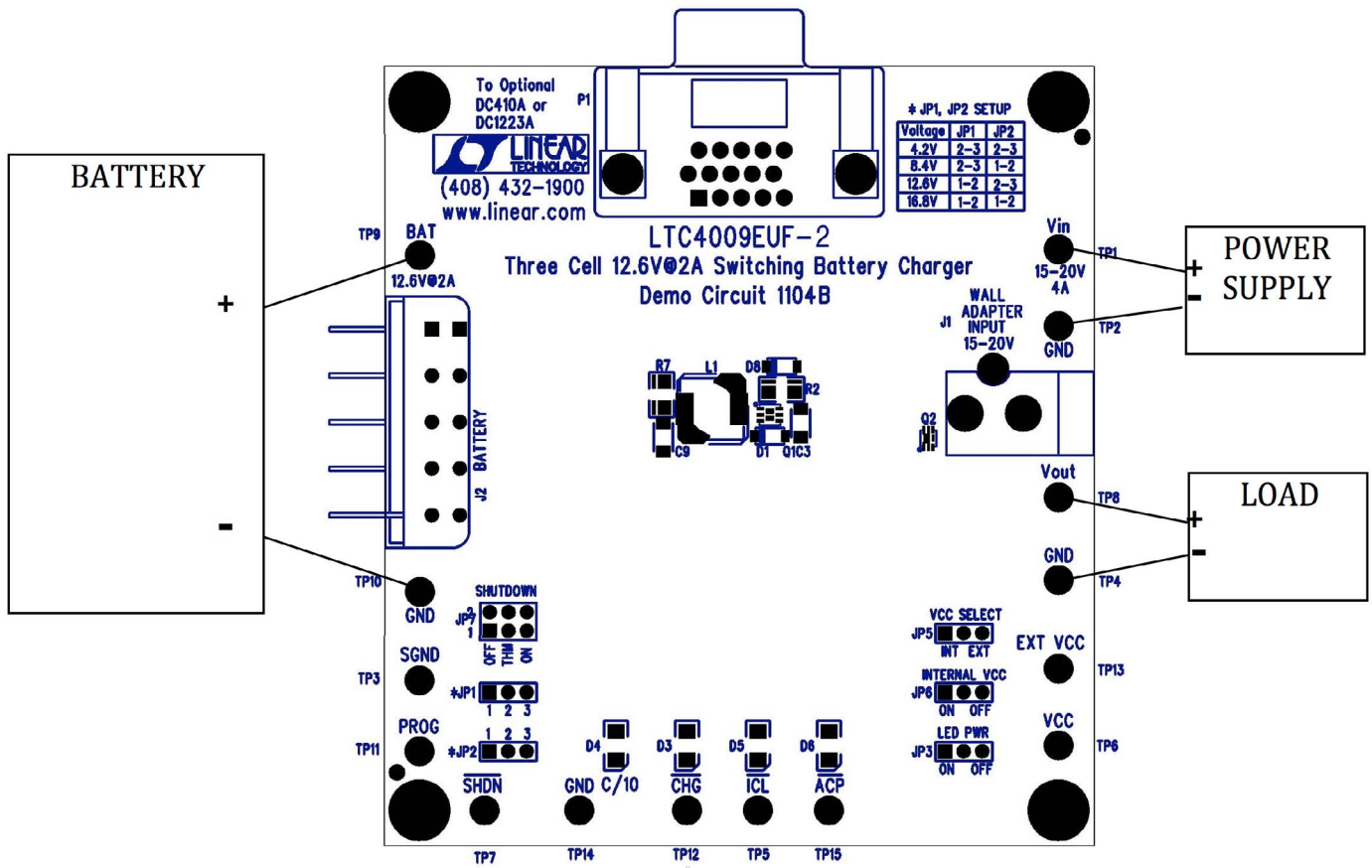


Figure 1. Optional DC410 SMBUS to Serial Adapter, Provides Data Logging and Control Battery

## PARTS LIST

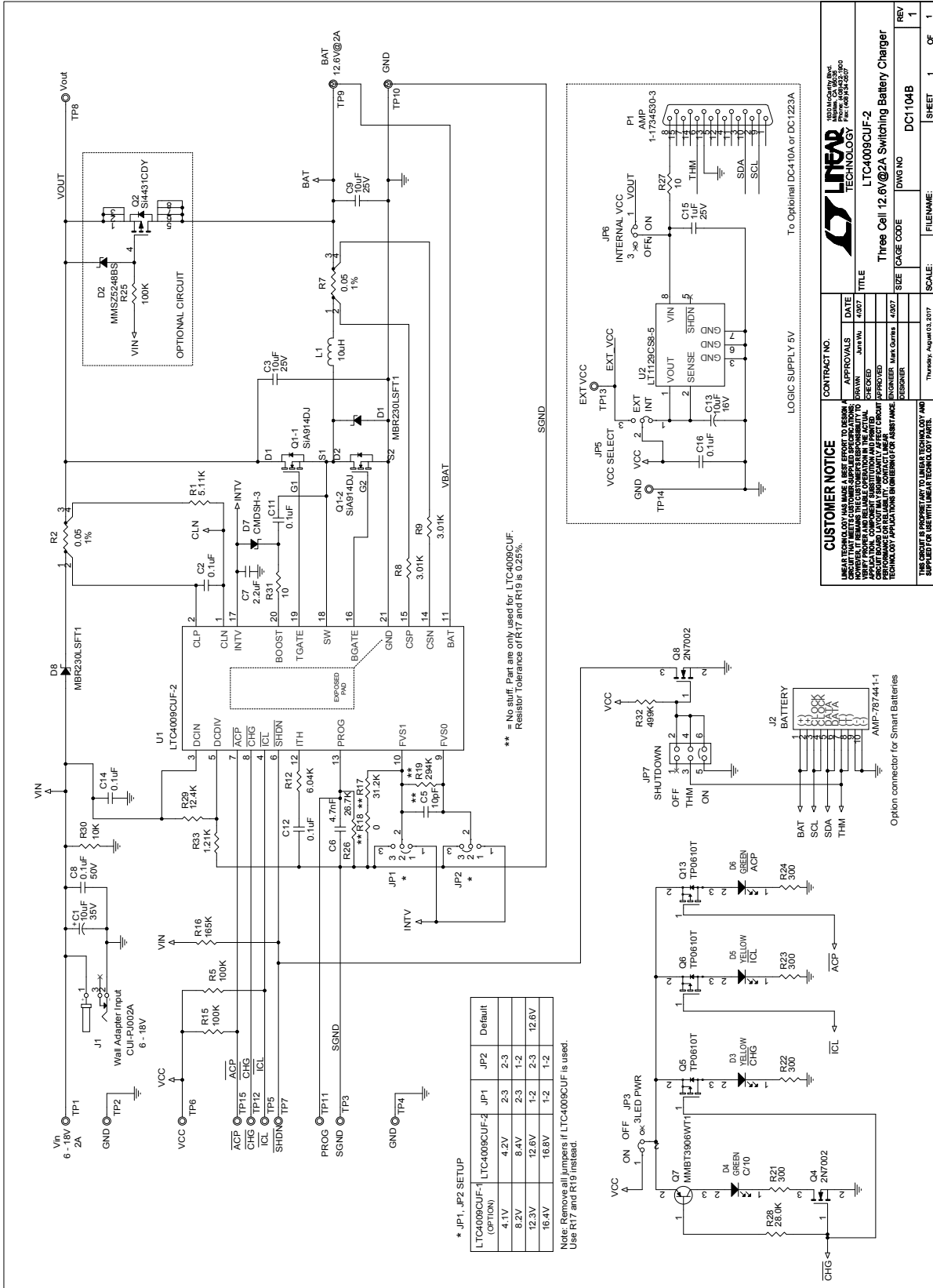
ITEM	QTY	REFERENCE	PART DESCRIPTION	MANUFACTURER/PART NUMBER
<b>Required Circuit Components</b>				
1	1	C1	CAP, ALUM 10 $\mu$ F, 35V, 5X6.0 SIZE	SUNCON, 35CE10AX
2	5	C2, C8, C11, C14, C16	CAP, X7R, 0.1 $\mu$ F, 50V, 10% 0603	TDK, C1608X7R1H104K
3	1	C12	CAP, X7R, 0.1 $\mu$ F, 16V, 10% 0402	TDK, C1005X7R1C104K
4	2	C3, C9	CAP, X5R, 10 $\mu$ F, 25V, 20% 1206	TAIYO YUDEN, TMK316BJ106ML
5	1	C6	CAP, X7R, 4.7nF, 50V, 10% 0402	TDK, C1005X7R1H472K
6	1	C7	CAP, X5R, 2.2 $\mu$ F, 16V, 20% 0805	TDK, C2012X5R1C225M
7	1	C13	CAP, TANT 10 $\mu$ F 16V 20% 3828	AVX TAJB106M016
8	1	C15	CAP, X7R 1 $\mu$ F 25V 10% 1206	AVX 12063C105KAT
9	2	D1, D8	SCHOTTKY RECT, MBR230LSFT1 SOD-123FL	ON SEMI, MBR230LSFT1G
10	2	D3, D5	LED, AMBER	ROHM SEMI, SML-010DTT86M
11	2	D4, D6	LED, GREEN	ROHM SEMI, SML-010FTT86L
12	1	D7	DIODE, CMDSH-3, SOD-323	CENTRAL SEMI, CMDSH-3TR (PBF)
13	1	L1	INDUCTOR, 10 $\mu$ H, CDR7D28MN SERIES	SUMIDA, CDR7D28MNNP-100 NC
14	1	Q1	DUAL-N-CH FET, SiA914ADJ, POWERPAK SC-70-6	VISHAY, SIA914ADJ-T1-GE3
15	1	R1	RES, CHIP, 5.11k, 1/16W, 1% 0603	VISHAY, CRCW06035K11FKEA
16	2	R2, R7	SENSE RES, LRC, 0.05, 0.25W, 1% 1206	WISHAY, WSL1206R0500FEA
17	2	R5, R15	RES, CHIP, 100k, 1/16W, 5% 0402 e3	VISHAY, CRCW0402100KJNED
18	2	R8, R9	RES, CHIP, 3.01k, 1/16W, 1% 0402	VISHAY, CRCW04023K01FKED
19	1	R12	RES, CHIP, 6.04k, 1/16W, 1% 0402	VISHAY, CRCW04026K04FKED
20	1	R16	RES, CHIP, 165k, 1/16W, 1% 0402 e3	VISHAY, CRCW0402165KFKED
21	1	R26	RES, CHIP, 26.7k, 1/16W, 1% 0402	VISHAY, CRCW040226K7FKED
22	2	R27, R31	RES, CHIP, 10, 1/16W, 5% 0603	VISHAY, CRCW060310R0JNEA
23	1	R29	RES, CHIP, 12.4k, 1/16W, 1% 0402	VISHAY, CRCW040212K4FKED
24	1	R30	RES, CHIP, 10k, 1/16W, 5% 0603 e3	VISHAY, CRCW060310K0JNEA
25	1	R33	RES, CHIP, 1.21k, 1/16W, 1% 0402 e3	VISHAY, CRCW04021K21FKED
26	1	U1	IC LTC4009CUF-2, QFN-20(4X4)	LINEAR TECH, LTC4009CUF-2#PBF
27	1	U2	IC LT1129CS8-5 SOS	LINEAR TECH, LT1129CS8-5#PBF
<b>Additional Demo Board Circuit Components</b>				
1	1	D2	DIODE, MMSZ5248BS, SOD-323	DIODES INC, MMSZ5248BS-7-F
2	1	Q2	P-CH, 60V, Si4431CDY-T1-GE3, SO8	VISHAY, Si4431CDY-T1-GE3
3	1	R25	RES, CHIP, 100k, 1/16W, 5% 0402 e3	VISHAY, CRCW0402100KJNED
4	0	(U1 OPTION)	IC LTC4009CUF-1, QFN-20(4X4)	LINEAR TECH, LTC4009CUF-1#PBF
5	0	(U1 OPTION)	IC LTC4009CUF, QFN-20(4x4)	LINEAR TECH, LTC4009CUF#PBF
6	0	R17 (FOR 4009CUF ONLY)	RES, CHIP, 31.2k, 1/16W, 025% 0402 e3	
7	0	R18 (FOR 4009CUF ONLY)	RES, CHIP, 0, 0402 e3	
8	0	R19 (FOR 4009CUF ONLY)	RES, CHIP, 294k, 1/16W, 0.25% 0402 e3	
9	0	L1 (OPTION)	INDUCTOR, 10 $\mu$ H, IHLP-2525CZ-01 SERIES	VISHAY, IHLP2525CZER100M01
10	0	C5 (FOR U1 = 4009CUF ONLY)	CAP, COG, 10pF, 50V, $\pm$ 0.5pF 0402	

# DEMO MANUAL DC1104B

## PARTS LIST

ITEM	QTY	REFERENCE	PART DESCRIPTION	MANUFACTURER/PART NUMBER
<b>Hardware: For Demo Board Only</b>				
1	15	TP1 TO TP15	TESTPOINT, TURRET, 0.061"	MILL-MAX, 2308-2-00-80-00-00-07-0
2	1	J1	CONNECTOR	CUI-STACK, CUI-PJ002A(PBF)
3	1	J2	HDR ASY, RA, NO KEY, STR TAIL	TYCO ELC, 5787441
4	5	JP1 TO JP3, JP5, JP6	HEADER 3 PIN 0.079 SINGLE ROW	SAMTEC, TMM103-02-L-S
5	6	JP1 TO JP3, JP5 TO JP7	SHUNT, 0.079" CENTER	SAMTEC, 2SN-BK-G
6	1	JP7	2X3, 0.079 DOUBLE ROW HEADER	SAMTEC, TMM103-02-L-D
7	3	Q6, Q5, Q13	P-CHAN, TP0610T SOT-23	VISHAY, TP0610K-T1-E3
8	1	Q7	TRANSISTOR, MMBT3906WT1 SOT-323	ON SEMI, MMBT3906WT1G
9	2	Q4, Q8	N-CH MOSFET, 2N7002	ZETEX, 2N7002 (PBF)
10	1	R32	RES, CHIP, 499k, 1/16W, 1% 0603 e3	VISHAY, CRCW0603499KFKEA
11	1	R28	RES, CHIP, 28k, 1/16W, 1% 0603	VISHAY, CRCW060328K0FKEA
12	4	R21, R22, R23, R24	RES, CHIP, 300, 1/16W, 5% 0603	VISHAY, CRCW0603300RJNEA
13	1	P1	CONNECTOR, DSUB, 15 PIN	AMP INC 1-1470250-3
14	4	STAND-OFF	STAND-OFF, NYLON 0.25"	KEYSTONE, 8831(SNAP ON)
15	1		FAB, PRINTED CIRCUIT BOARDS	DEMO CIRCUIT #1104B
16	2		STENCIL	STENCIL 1104B

**SCHEMATIC DIAGRAM**





## ESD Caution

**ESD (electrostatic discharge) sensitive device.** Charged devices and circuit boards can discharge without detection. Although this product features patented or proprietary protection circuitry, damage may occur on devices subjected to high energy ESD. Therefore, proper ESD precautions should be taken to avoid performance degradation or loss of functionality.

## Legal Terms and Conditions

By using the evaluation board discussed herein (together with any tools, components documentation or support materials, the "Evaluation Board"), you are agreeing to be bound by the terms and conditions set forth below ("Agreement") unless you have purchased the Evaluation Board, in which case the Analog Devices Standard Terms and Conditions of Sale shall govern. Do not use the Evaluation Board until you have read and agreed to the Agreement. Your use of the Evaluation Board shall signify your acceptance of the Agreement. This Agreement is made by and between you ("Customer") and Analog Devices, Inc. ("ADI"), with its principal place of business at One Technology Way, Norwood, MA 02062, USA. Subject to the terms and conditions of the Agreement, ADI hereby grants to Customer a free, limited, personal, temporary, non-exclusive, non-sublicensable, non-transferable license to use the Evaluation Board FOR EVALUATION PURPOSES ONLY. Customer understands and agrees that the Evaluation Board is provided for the sole and exclusive purpose referenced above, and agrees not to use the Evaluation Board for any other purpose. Furthermore, the license granted is expressly made subject to the following additional limitations: Customer shall not (i) rent, lease, display, sell, transfer, assign, sublicense, or distribute the Evaluation Board; and (ii) permit any Third Party to access the Evaluation Board. As used herein, the term "Third Party" includes any entity other than ADI, Customer, their employees, affiliates and in-house consultants. The Evaluation Board is NOT sold to Customer; all rights not expressly granted herein, including ownership of the Evaluation Board, are reserved by ADI. CONFIDENTIALITY. This Agreement and the Evaluation Board shall all be considered the confidential and proprietary information of ADI. Customer may not disclose or transfer any portion of the Evaluation Board to any other party for any reason. Upon discontinuation of use of the Evaluation Board or termination of this Agreement, Customer agrees to promptly return the Evaluation Board to ADI. ADDITIONAL RESTRICTIONS. Customer may not disassemble, decompile or reverse engineer chips on the Evaluation Board. Customer shall inform ADI of any occurred damages or any modifications or alterations it makes to the Evaluation Board, including but not limited to soldering or any other activity that affects the material content of the Evaluation Board. Modifications to the Evaluation Board must comply with applicable law, including but not limited to the RoHS Directive. TERMINATION. ADI may terminate this Agreement at any time upon giving written notice to Customer. Customer agrees to return to ADI the Evaluation Board at that time. LIMITATION OF LIABILITY. THE EVALUATION BOARD PROVIDED HEREUNDER IS PROVIDED "AS IS" AND ADI MAKES NO WARRANTIES OR REPRESENTATIONS OF ANY KIND WITH RESPECT TO IT. ADI SPECIFICALLY DISCLAIMS ANY REPRESENTATIONS, ENDORSEMENTS, GUARANTEES, OR WARRANTIES, EXPRESS OR IMPLIED, RELATED TO THE EVALUATION BOARD INCLUDING, BUT NOT LIMITED TO, THE IMPLIED WARRANTY OF MERCHANTABILITY, TITLE, FITNESS FOR A PARTICULAR PURPOSE OR NON-INFRINGEMENT OF INTELLECTUAL PROPERTY RIGHTS. IN NO EVENT WILL ADI AND ITS LICENSORS BE LIABLE FOR ANY INCIDENTAL, SPECIAL, INDIRECT, OR CONSEQUENTIAL DAMAGES RESULTING FROM CUSTOMER'S POSSESSION OR USE OF THE EVALUATION BOARD, INCLUDING BUT NOT LIMITED TO LOST PROFITS, DELAY COSTS, LABOR COSTS OR LOSS OF GOODWILL. ADI'S TOTAL LIABILITY FROM ANY AND ALL CAUSES SHALL BE LIMITED TO THE AMOUNT OF ONE HUNDRED US DOLLARS (\$100.00). EXPORT. Customer agrees that it will not directly or indirectly export the Evaluation Board to another country, and that it will comply with all applicable United States federal laws and regulations relating to exports. GOVERNING LAW. This Agreement shall be governed by and construed in accordance with the substantive laws of the Commonwealth of Massachusetts (excluding conflict of law rules). Any legal action regarding this Agreement will be heard in the state or federal courts having jurisdiction in Suffolk County, Massachusetts, and Customer hereby submits to the personal jurisdiction and venue of such courts. The United Nations Convention on Contracts for the International Sale of Goods shall not apply to this Agreement and is expressly disclaimed.

## X-ON Electronics

Largest Supplier of Electrical and Electronic Components

*Click to view similar products for [Power Management IC Development Tools](#) category:*

*Click to view products by [Analog Devices](#) manufacturer:*

Other Similar products are found below :

[EVAL-ADM1168LQEBZ](#) [EVB-EP5348UI](#) [MIC23451-AAAYFL EV](#) [MIC5281YMME EV](#) [DA9063-EVAL](#) [ADP122-3.3-EVALZ](#) [ADP130-0.8-EVALZ](#) [ADP130-1.2-EVALZ](#) [ADP130-1.5-EVALZ](#) [ADP130-1.8-EVALZ](#) [ADP1714-3.3-EVALZ](#) [ADP1716-2.5-EVALZ](#) [ADP1740-1.5-EVALZ](#) [ADP1752-1.5-EVALZ](#) [ADP1828LC-EVALZ](#) [ADP1870-0.3-EVALZ](#) [ADP1871-0.6-EVALZ](#) [ADP1873-0.6-EVALZ](#) [ADP1874-0.3-EVALZ](#) [ADP1882-1.0-EVALZ](#) [ADP199CB-EVALZ](#) [ADP2102-1.25-EVALZ](#) [ADP2102-1.875EVALZ](#) [ADP2102-1.8-EVALZ](#) [ADP2102-2-EVALZ](#) [ADP2102-3-EVALZ](#) [ADP2102-4-EVALZ](#) [ADP2106-1.8-EVALZ](#) [ADP2147CB-110EVALZ](#) [AS3606-DB](#) [BQ24010EVM](#) [BQ24075TEVM](#) [BQ24155EVM](#) [BQ24157EVM-697](#) [BQ24160EVM-742](#) [BQ24296MEVM-655](#) [BQ25010EVM](#) [BQ3055EVM](#) [NCV891330PD50GEVB](#) [ISLUSBI2CKIT1Z](#) [LM2744EVAL](#) [LM2854EVAL](#) [LM3658SD-AEV/NOPB](#) [LM3658SDEV/NOPB](#) [LM3691TL-1.8EV/NOPB](#) [LM4510SDEV/NOPB](#) [LM5033SD-EVAL](#) [LP38512TS-1.8EV](#) [EVAL-ADM1186-1MBZ](#) [EVAL-ADM1186-2MBZ](#)