

LTC2309

8-Channel, 12-Bit SAR ADC with I²C Interface

DESCRIPTION

Demonstration circuit 1337A features the [LTC[®]2309](#), a low noise, low power, 8-channel, 12-bit, successive approximation ADC with an I²C compatible serial interface. The LTC2309 is available in a 24-pin 4mm × 4mm QFN package. DC1337A demonstrates the DC performance of the LTC2309 in conjunction with the DC590 or DC2026 data collection boards (QuikEval™ controller). Alternatively, by connecting the DC1337 into a customer application the

performance of the LTC2309 can be evaluated directly in that circuit.

Design files for this circuit board are available at <http://www.linear.com/demo/DC1337A>

LT, LT, LTC, LTM, Linear Technology and the Linear logo are registered trademarks and QuikEval is a trademark of Linear Technology Corporation. All other trademarks are the property of their respective owners.

BOARD PHOTO

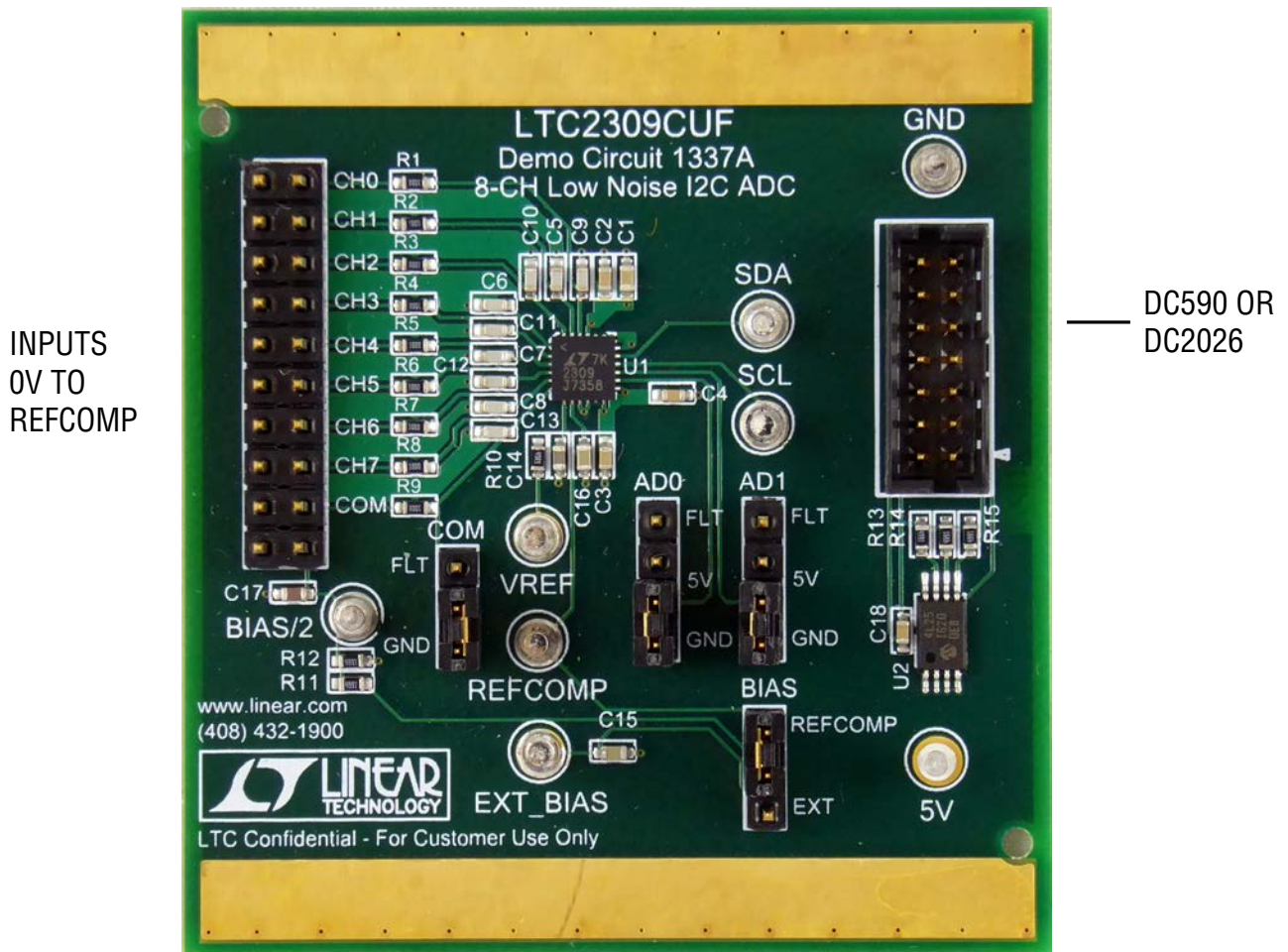


Figure 1. DC1337A Connection Diagram

QUICK START PROCEDURE

Connect the DC1337 to a QuikEval controller using the supplied 14-conductor ribbon cable. **Make sure the VCCIO jumper of the QuikEval controller is in the 5V position.** Connect the QuikEval controller to a host PC with a standard USB A/B cable. Apply an analog input voltage to CH0-CH7 on connector J1. Run the evaluation software supplied with the QuikEval controller or download it from www.linear.com/software. The correct control panel will be loaded automatically. Click the Collect (Figure 2) button to begin reading CH0-CH3. Press the Page 1 Button to toggle to Page 2. This displays CH4-CH7. This button toggles between the two displays.

The Help menu contains information on data logging the ADC results. The Tools menu has the data logging option as well as options for changing the number of points displayed, the number of points in an average and whether the data is displayed in LSBs or Volts. The View menu can be used to access the LTC2309 product page.

If the QuikEval program is started without the demo board attached to the QuikEval controller, the Tools menu can be used to check for updates and automatically install them. DC1337 requires at least version K71 of the QuikEval software.

HARDWARE SETUP

Signal Connections

J1 Connector for CH0-CH7, COM and BIAS/2. Limit input voltage swings to GND-VDD. For optimum performance, the input should be bandlimited to the frequencies of interest.

Jumper J2 AD0 I²C address line. Set to GND for operation with supplied software. For operation without QuikEval, configure as desired: Low (GND), High (5V) or Float (FLT)

Jumper J3 AD1 I²C address line. Set to GND for operation with supplied software. For operation without QuikEval, configure as desired: Low (GND), High (5V) or Float (FLT)

Jumper J4 COM Common pin for single ended ADC conversions. Can be set to GND or left floating (FLT) so that COM can be driven by J1.

J5 QuikEval interface connector. Provides power and I²C interface to the DC1337.

Jumper J6 BIAS Selects between REFCOMP and an external bias voltage to drive the Bias/2 line. Bias/2 is designed to set a center point for the minus input during bipolar operation.

Turrets

EXT_BIAS External Bias connection. This can be used to drive the BIAS/2 line through a 2:1 divider. To use this pin put jumper J6 in the EXT position and apply desired bias voltage.

5V 5V supply line for the DC1337. Use this line only if the QuikEval controller is not used

GND Ground line for the DC1337

SDA I²C bidirectional data line. Controlled by the QuikEval controller if connected.

SCL I²C clock line. Controlled by the QuikEval controller if connected.

VREF Connected to ADC V_{REF} pin.

REFCOMP Connected to ADC REFCOMP pin.

BIAS/2 Bias Voltage/2 (REFCOMP or EXT)

HARDWARE SETUP

Using the DC1337 without the QuikEval Controller

Interface signals SDA and SCL and power are normally provided to the DC1337 by the QuikEval controller. If you use this board without the QuikEval controller, it is the user's responsibility to connect a 5V power supply and

ground as well as generating SDA and SCL. These signals can be provided through the 14-pin ribbon cable connector. See schematic for pinout. See the LTC2309 data sheet for information on driving SDA and SCL.

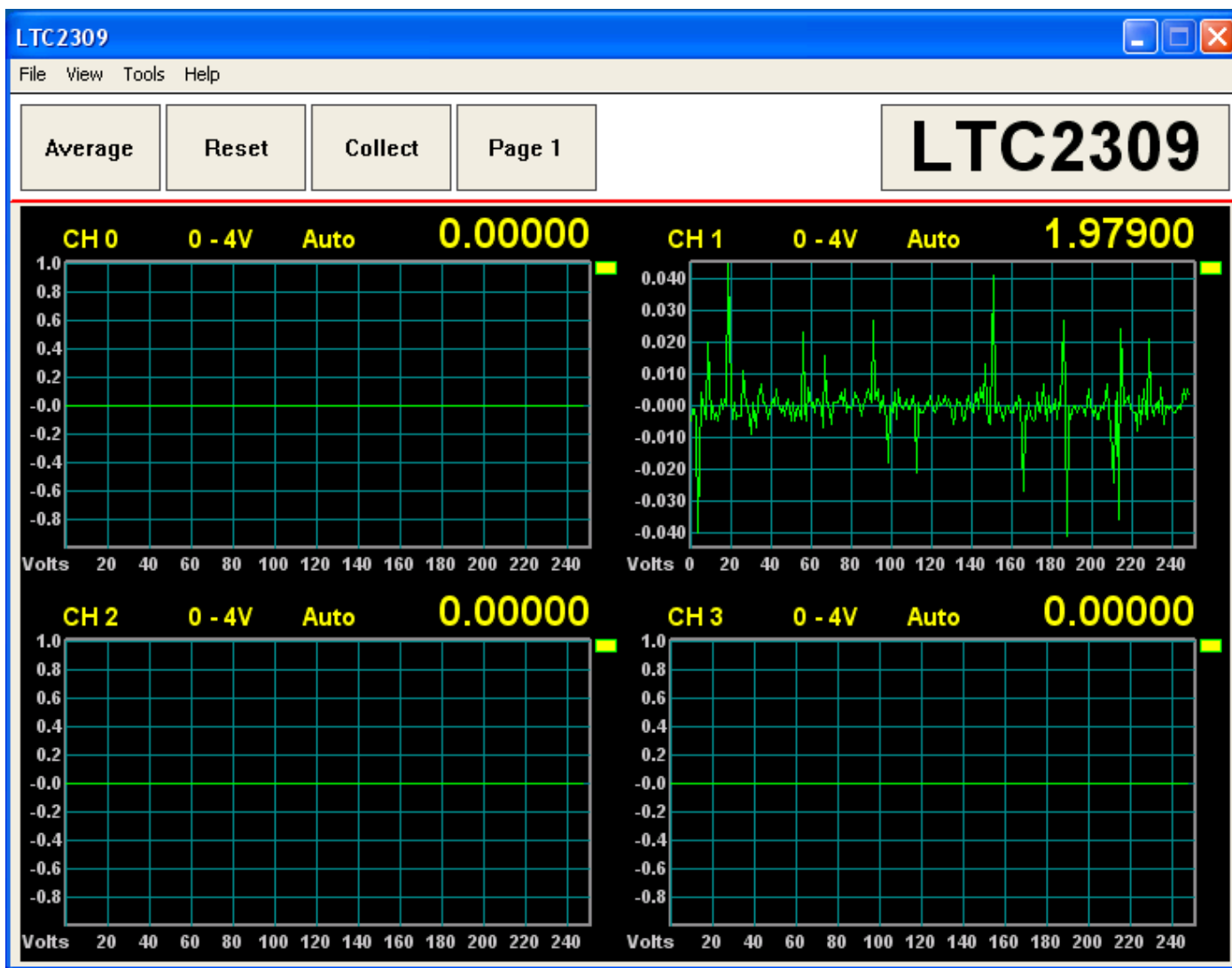


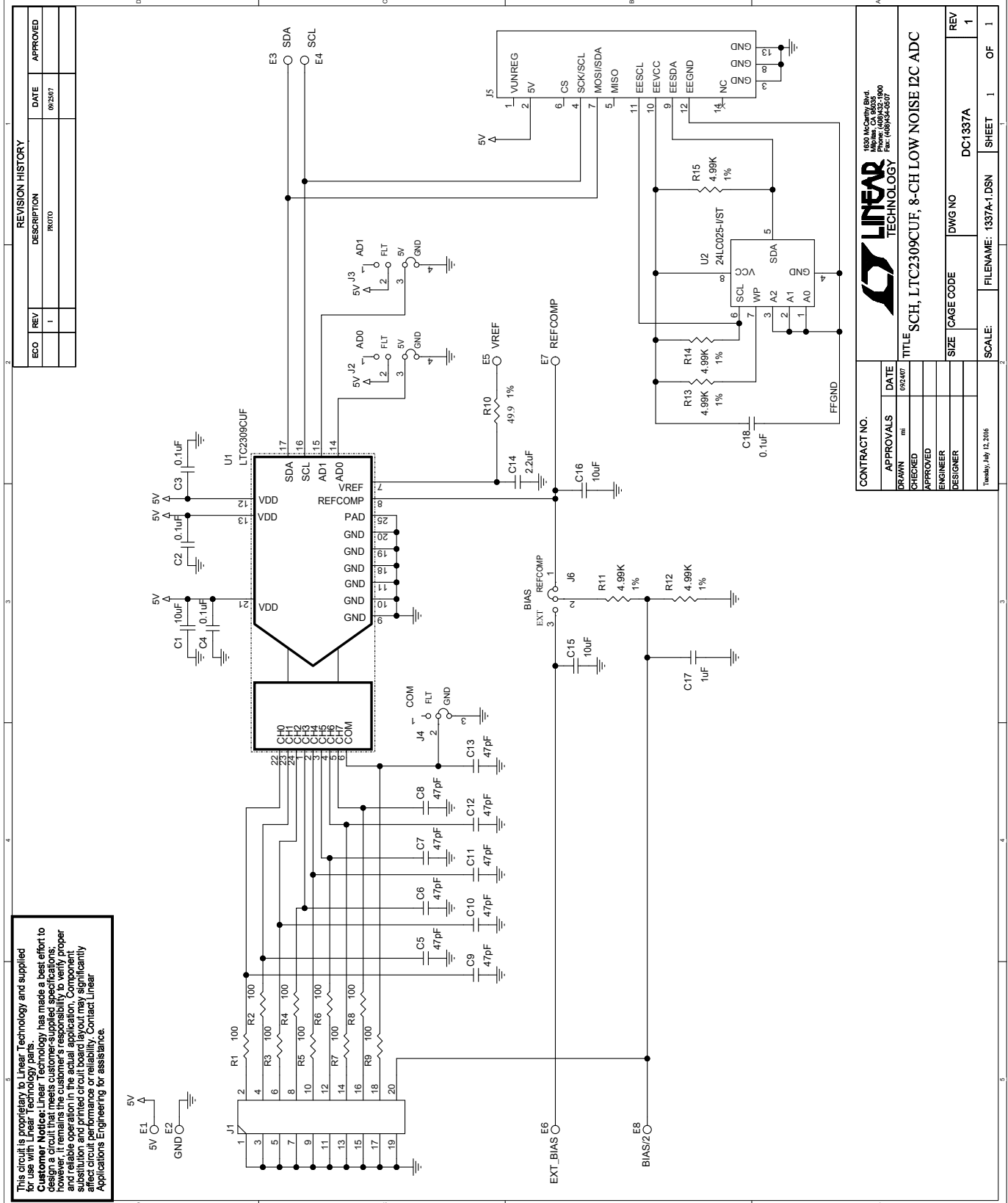
Figure 2. DC1337A QuikEval Screenshot

DEMO MANUAL DC1337A

PARTS LIST

ITEM	QTY	REFERENCE	PART DESCRIPTION	MANUFACTURER/PART NUMBER
1	3	C1, C15, C16	CAP., 10 μ F, X5R, 6.3V, 20%, 0603	MURATA, GRM188R60J106ME47D AVX, 06036D106MAT2A NIC, NMC0603X5R106M6.3TRPF TDK, C1608X5R0J106M080AB
2	4	C2, C3, C4, C18	CAP., 0.1 μ F, X7R, 25V, 10%, 0603	AVX, 06033C104KAT2A TDK, C1608X7R1E104K080AA
3	9	C5, C6, C7, C8, C9, C10, C11, C12, C13	CAP., 47pF, C0G, 25V, 10%, 0603	AVX, 06033A470KAT2A
4	1	C14	CAP., 2.2 μ F, X5R, 6.3V, 10%, 0603	TAIYO YUDEN, JMK107BJ225KA-T AVX, 06036D225KAT2A MURATA, GRM188R60J225KE19D
5	1	C17	CAP., 1 μ F, X7R, 16V, 10%, 0603	TDK, C1608X7R1C105K080AC AVX, 0603YC105KAT2A NIC, NMC0603X7R105K16TRPF
6	8	E1, E2, E3, E4, E5, E6, E7, E8	TEST POINT, TURRET, 0.064", MTG. HOLE	MILL-MAX, 2308-2-00-80-00-00-07-0
7	1	J1	CONN., HDR., MALE, 2x10, 2.54mm, THT, STRT	SAMTEC, TSW-110-07-L-D
8	2	J2, J3	CONN., HDR., MALE, 1x4, 2.54mm, THT, STRT	SAMTEC, TSW-104-07-L-S
9	2	J6, J4	CONN., HDR., MALE, 1x3, 2.54mm, THT, STRT	SAMTEC, TSW-103-07-L-S
10	1	J5	CONN., HDR., MALE, 2x7, 2mm, THT, VERT, SHROUDED	MOLEX, 87831-1420
11	9	R1, R2, R3, R4, R5, R6, R7, R8, R9	RES., 100 Ω , 1%, 1/10W, 0603	VISHAY, CRCW0603100RFKEA NIC, NRC06F1000TRF
12	1	R10	RES., 49.9 Ω , 1%, 1/10W, 0603	VISHAY, CRCW060349R9FKEA PANASONIC, ERJ3EKF49R9V
13	5	R11, R12, R13, R14, R15	RES., 4.99k Ω , 1%, 1/10W, 0603	VISHAY, CRCW06034K99FKEA NIC, NRC06F4991TRF
14	1	U1	IC, 5V, 8-CH, 12-Bit I ² C SAR ADC, QFN-24UF	LINEAR TECH., LTC2309CUF#PBF
15	1	U2	IC, MEMORY, EEPROM, 2K-Bit, 400kHz, TSSOP-8	MICROCHIP, 24LC025-I/ST
16	4	JP2, JP3, JP4, JP6	CONN., SHUNT, FEMALE, 2 POS, 2.54mm	SAMTEC, SNT-100-BK-G
17	1		PCB, DC1337A	DEMO CIRCUIT 1337A
18	1		STENCIL	STENCIL 1337A

SCHEMATIC DIAGRAM



This circuit is proprietary to Linear Technology and supplied for use with Linear Technology parts.
Customer Notice: Linear Technology has made a best effort to design a circuit that meets the customer's responsibility to verify proper operation in their application. Components are not guaranteed for use in applications where improper use may affect circuit performance or reliability. Contact Linear Applications Engineering for assistance.

REVISION HISTORY		
ECO	REV	DATE
	1	09/23/07
		DESCRIPTION
		PROT0
		APPROVED

CONTRACT NO.		DATE	
APPROVALS		09/24/07	
DRAWN	mm	CHECKED	
APPROVED		APPROVED	
ENGINEER		DESIGNER	
TITLE		SCALE	
SCH, LTC2309CUIF, 8-CH LOW NOISE I2C ADC		FILENAME: 1337A-1.DSN	
SIZE	CAGE CODE	DWG NO	DC1337A
REV		SHEET	1 OF 1

LINEAR TECHNOLOGY
 (800) McCarty Blvd.
 Wilmington, CA 94095
 Fax: (415) 941-0807



Information furnished by Linear Technology Corporation is believed to be accurate and reliable. However, no responsibility is assumed for its use. Linear Technology Corporation makes no representation that the interconnection of its circuits as described herein will not infringe on existing patent rights.

DEMO MANUAL DC1337A

DEMONSTRATION BOARD IMPORTANT NOTICE

Linear Technology Corporation (LTC) provides the enclosed product(s) under the following **AS IS** conditions:

This demonstration board (DEMO BOARD) kit being sold or provided by Linear Technology is intended for use for **ENGINEERING DEVELOPMENT OR EVALUATION PURPOSES ONLY** and is not provided by LTC for commercial use. As such, the DEMO BOARD herein may not be complete in terms of required design-, marketing-, and/or manufacturing-related protective considerations, including but not limited to product safety measures typically found in finished commercial goods. As a prototype, this product does not fall within the scope of the European Union directive on electromagnetic compatibility and therefore may or may not meet the technical requirements of the directive, or other regulations.

If this evaluation kit does not meet the specifications recited in the DEMO BOARD manual the kit may be returned within 30 days from the date of delivery for a full refund. **THE FOREGOING WARRANTY IS THE EXCLUSIVE WARRANTY MADE BY THE SELLER TO BUYER AND IS IN LIEU OF ALL OTHER WARRANTIES, EXPRESSED, IMPLIED, OR STATUTORY, INCLUDING ANY WARRANTY OF MERCHANTABILITY OR FITNESS FOR ANY PARTICULAR PURPOSE. EXCEPT TO THE EXTENT OF THIS INDEMNITY, NEITHER PARTY SHALL BE LIABLE TO THE OTHER FOR ANY INDIRECT, SPECIAL, INCIDENTAL, OR CONSEQUENTIAL DAMAGES.**

The user assumes all responsibility and liability for proper and safe handling of the goods. Further, the user releases LTC from all claims arising from the handling or use of the goods. Due to the open construction of the product, it is the user's responsibility to take any and all appropriate precautions with regard to electrostatic discharge. Also be aware that the products herein may not be regulatory compliant or agency certified (FCC, UL, CE, etc.).

No License is granted under any patent right or other intellectual property whatsoever. **LTC assumes no liability for applications assistance, customer product design, software performance, or infringement of patents or any other intellectual property rights of any kind.**

LTC currently services a variety of customers for products around the world, and therefore this transaction **is not exclusive**.

Please read the DEMO BOARD manual prior to handling the product. Persons handling this product must have electronics training and observe good laboratory practice standards. **Common sense is encouraged.**

This notice contains important safety information about temperatures and voltages. For further safety concerns, please contact a LTC application engineer.

Mailing Address:

Linear Technology
1630 McCarthy Blvd.
Milpitas, CA 95035

Copyright © 2004, Linear Technology Corporation

X-ON Electronics

Largest Supplier of Electrical and Electronic Components

Click to view similar products for [Data Conversion IC Development Tools](#) category:

Click to view products by [Analog Devices](#) manufacturer:

Other Similar products are found below :

[EVAL-AD5063EBZ](#) [EVAL-AD5422LFEBZ](#) [EVAL-AD7265EDZ](#) [EVAL-AD7641EDZ](#) [EVAL-AD7674EDZ](#) [EVAL-AD7719EBZ](#) [EVAL-AD7767-1EDZ](#) [EVAL-AD7995EBZ](#) [AD9114-DPG2-EBZ](#) [AD9211-200EBZ](#) [AD9251-20EBZ](#) [AD9251-65EBZ](#) [AD9255-125EBZ](#) [AD9284-250EBZ](#) [AD9613-170EBZ](#) [AD9627-125EBZ](#) [AD9629-20EBZ](#) [AD9709-EBZ](#) [AD9716-DPG2-EBZ](#) [AD9737A-EBZ](#) [AD9787-DPG2-EBZ](#) [AD9993-EBZ](#) [DAC8555EVM](#) [ADS5482EVM](#) [ADS8372EVM](#) [EVAL-AD5061EBZ](#) [EVAL-AD5062EBZ](#) [EVAL-AD5443-DBRDZ](#) [EVAL-AD5570SDZ](#) [EVAL-AD7450ASDZ](#) [EVAL-AD7677EDZ](#) [EVAL-AD7992EBZ](#) [EVAL-AD7994EBZ](#) [AD9119-MIX-EBZ](#) [AD9148-M5375-EBZ](#) [AD9204-80EBZ](#) [AD9233-125EBZ](#) [AD9265-105EBZ](#) [AD9265-80EBZ](#) [AD9608-125EBZ](#) [AD9629-80EBZ](#) [AD9648-125EBZ](#) [AD9649-20EBZ](#) [AD9650-80EBZ](#) [AD9765-EBZ](#) [AD9767-EBZ](#) [AD9778A-DPG2-EBZ](#) [ADS8322EVM](#) [LM96080EB/NOPB](#) [EVAL-AD5445SDZ](#)