

## DESCRIPTION

Demonstration circuit 1406A features the LT<sup>®</sup>3746, 32-channel 20mA LED driver with buck controller and serial interface. Each channel has an individually adjustable 12-bit (4096-step) grayscale PWM dimming control and a 6-bit (64-step) dot correction current adjustment. Both dimming control and current adjustment are accessible via a 30MHz cascadable serial data interface. Individual open/short LED and overtemperature flags are sent back during status read-back.

Three LT3746's are connected in series to control 32 RGB LEDs stuffed on the demo board. Each IC drives a separate color. The evaluation software installed in a host computer

communicates with the DC1406A via the interface board DC590B, an USB serial controller.

The LT3746 data sheet gives a complete description of the part, its operation and application information. The datasheet must be read in conjunction with this quick start guide for working on or modifying the demo circuit 1406A.

**Design files for this circuit board are available at <http://www.linear.com/demo>**

LT, LT, LTC, LTM, Linear Technology and the Linear logo are registered trademarks and QuikEval is a trademark of Linear Technology Corporation. All other trademarks are the property of their respective owners.

---

## PERFORMANCE SUMMARY

Specifications are at  $T_A = 25^\circ\text{C}$ .

SYMBOL	PARAMETER	CONDITIONS	MIN	TYP	MAX	UNITS
$V_{IN}$	Input Supply Range		9		40	V
$V_{OUT-R}$	Pre-Charge Voltage (Red)			3.0		V
$V_{OUT-G}$	Pre-Charge Voltage (Green)			4.2		V
$V_{OUT-B}$	Pre-Charge Voltage (Blue)			4.2		V
$f_S$	Free-Running Switching Frequency			400		kHz

## QUICK START PROCEDURE

Demonstration circuit 1406A is easy to set up to evaluate the performance of the LT3746. Refer to Figure 1 for proper measurement equipment setup and follow the procedure below:

1. Install the QuikEval™ System software on the host computer. The software can be downloaded from [http://www.linear.com/designtools/software/quick\\_eval.jsp](http://www.linear.com/designtools/software/quick_eval.jsp).
2. Install Microsoft .NET framework. The software can be downloaded from <http://www.microsoft.com/.NET/>
3. Copy LEDRelease folder to the host computer. Run vcredist\_x86.exe. You may need to restart the computer.

4. Place jumpers in the following positions:

- JP1** On
- JP2** TO PWMCK

5. Connect the demo board to DC590B as shown in Figure 1.
6. With power off, connect the input power supply to  $V_{IN}$  and GND.
7. Apply 9V to 40V to DC1406A input.
8. Run LTcolorLEDarray.exe in the LEDRelease folder.
9. The initial start-up screen appears, at this point, none of the LEDs should light up. Proceed with board evaluation.

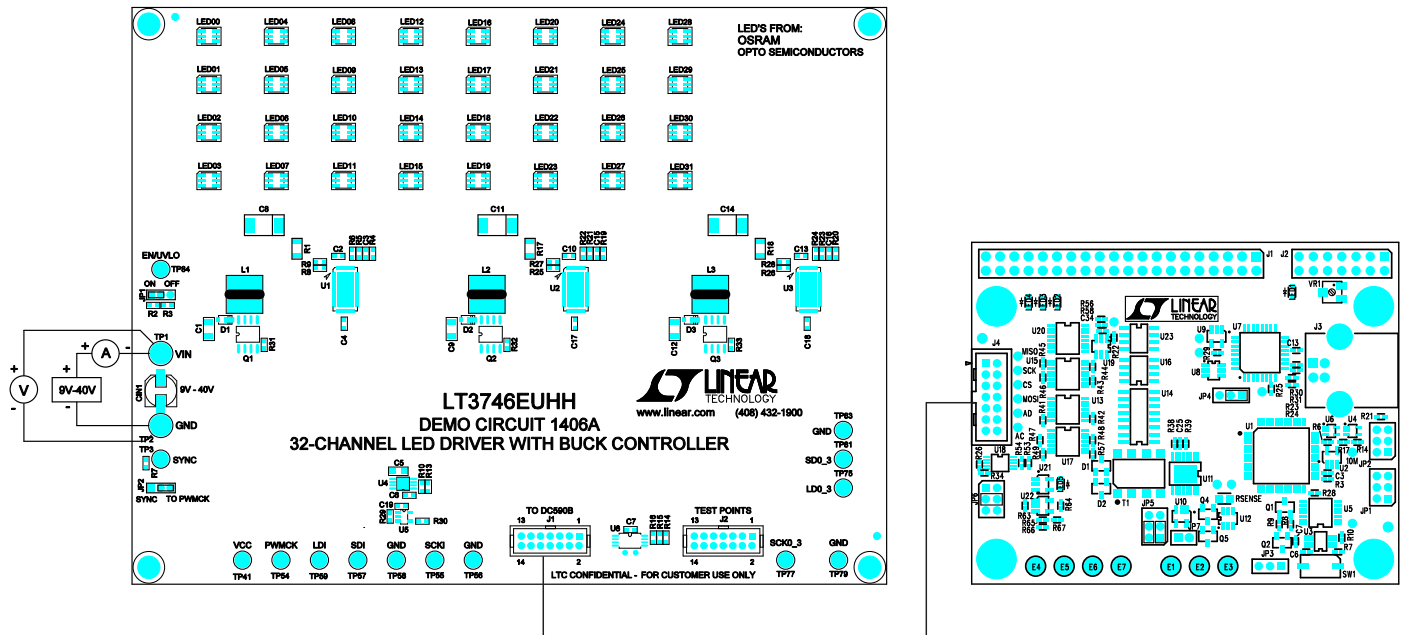


Figure 1. Proper Measurement Equipment Setup

## OPERATING THE CONTROL SCREEN

Figure 2 is the initial start-up screen that appears when the program is launched.

### 1. Send Data Frame to Chip

Double-click one of the black squares in the “LED Colors” grid. The standard color selector dialog box appears. Select a color and click “OK.” Or select the LED number in the “LED Configuration” grid, adjust the LED color by moving the sliding bars.

Click the command button labeled “Send Data Frame to Chip.” Verify that the LEDs light up in corresponding colors.

### 2. Play Pattern File

Click the “Browse” button and pick the file “test”. Click the command button labeled “Play Pattern File.” Verify that all 32 RGB LEDs light up in red, green, blue and white in sequence.

Check the “Auto-Update Data/Loop File” option. Click the command button labeled “Play Pattern File.” Click the “stop” button at any time to stop.

### 3. Append Data Frame to Pattern File

Create a blank text file. Click the “Browse” button and pick this new file. Create and then add the first data frame to the file by clicking the “Append Data Frame to Pattern File” button. Create the second data frame and add it to the file by clicking the “Append” button. Repeat until all the data frames are added to the file. Click the command button labeled “Play Pattern File.”

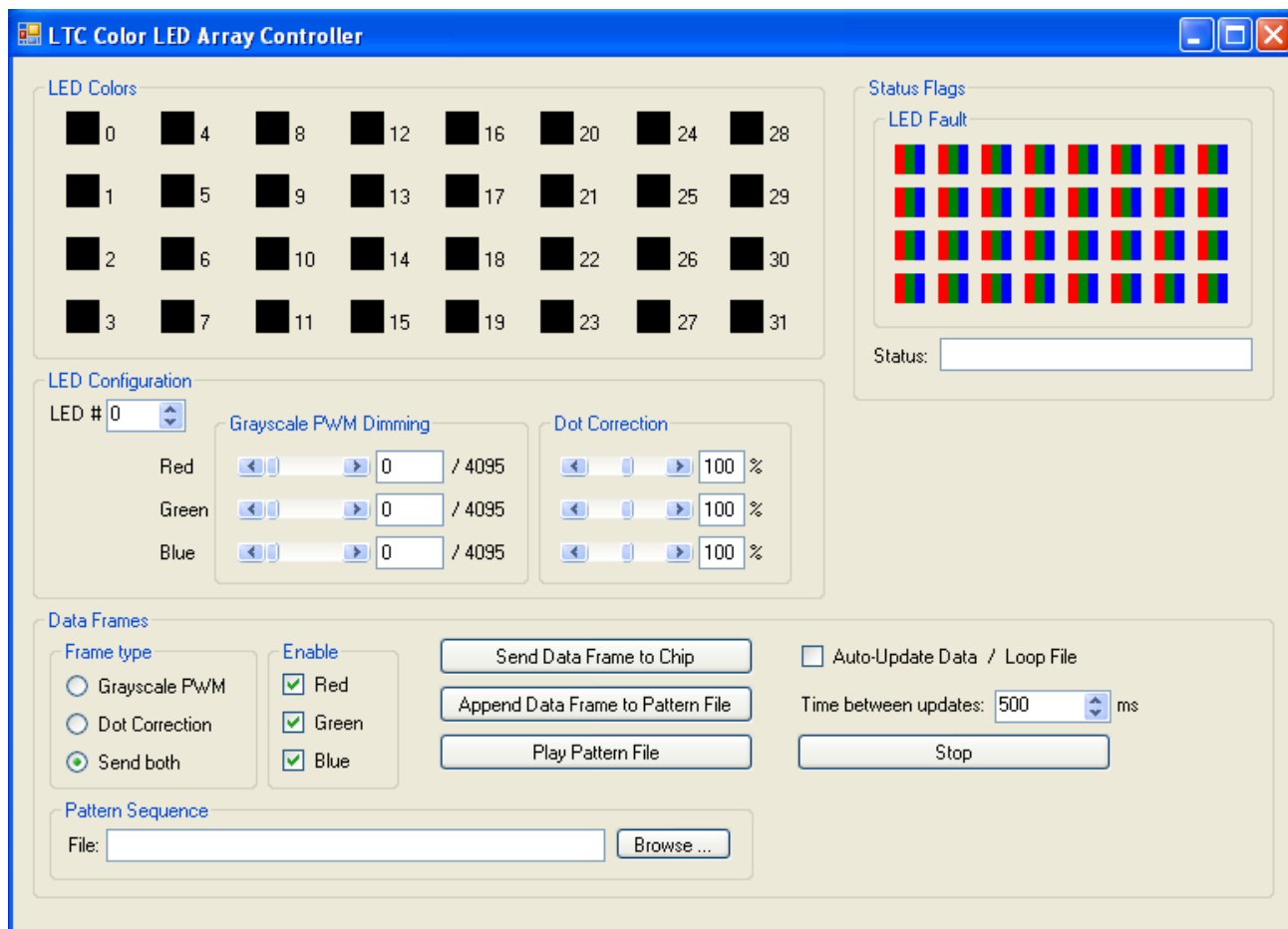


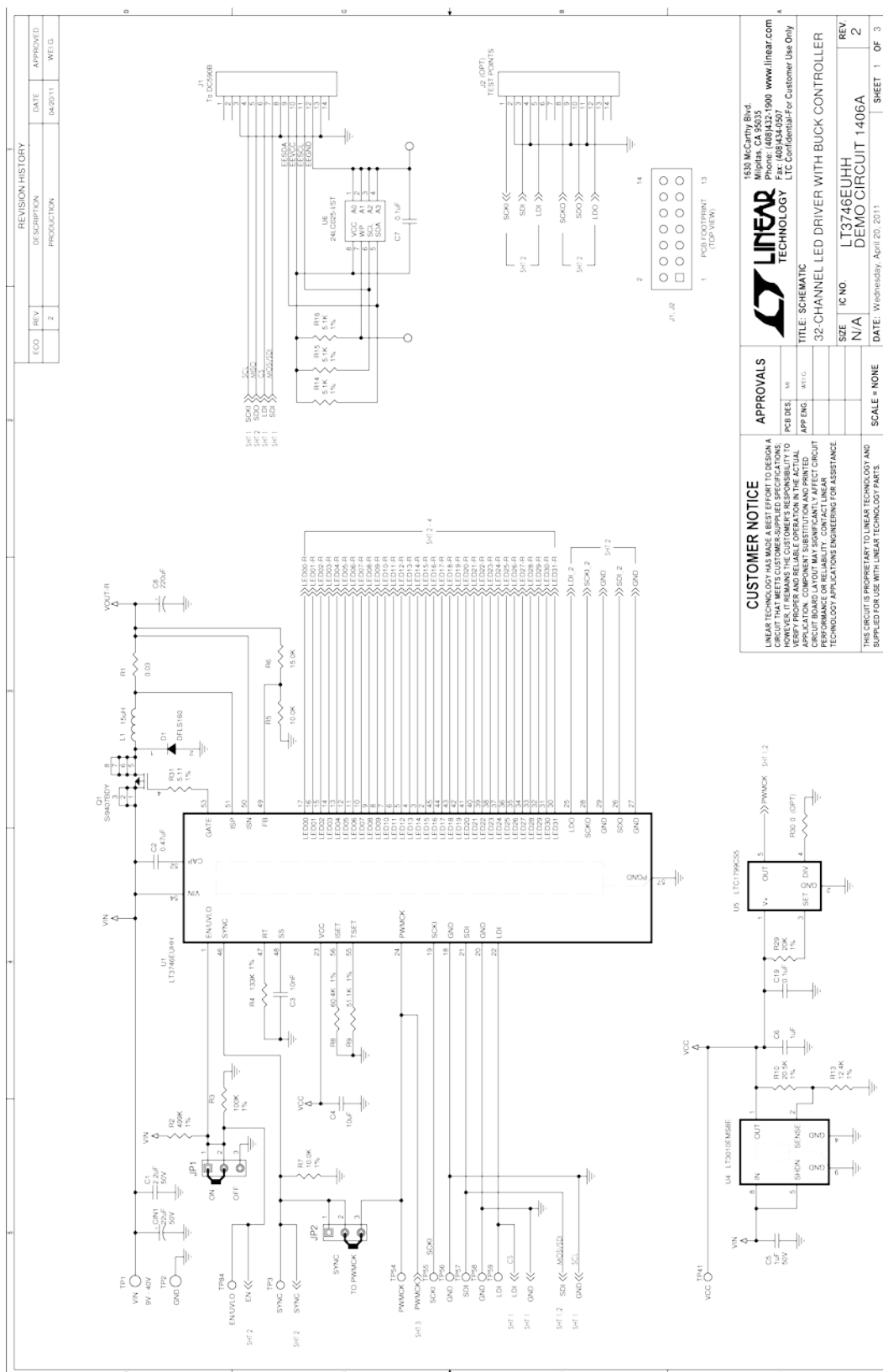
Figure 2. GUI Control Panel Start-Up Screen

# DEMO MANUAL DC1406A

## PARTS LIST

ITEM	QUANTITY	REFERENCE-DESCRIPTION	DESCRIPTION	MANUFACTURER'S PART NUMBER
<b>Required Circuit Components</b>				
1	3	C1, C9, C12	Capacitor, 1206 2.2 $\mu$ F 10% 50V X5R	Murata GRM31CR71H225KA88L
2	3	C2, C10, C13	Capacitor, 0603 0.47 $\mu$ F 10% 16V X7R	TDK C1608X7R1C474KT
3	3	C3, C15, C16	Capacitor, 0603 10nF 10% 50V X7R	AVX 06035C103KAT2A
4	3	C4, C17, C18	Capacitor, 0603 10 $\mu$ F 10% 6.3V X5R	Murata GRM188R60J106ME47D
5	1	C5	Capacitor, 0805 1 $\mu$ F 10% 50V X7R	Murata GRM21BR71H105KA12L
6	1	C6	Capacitor, 0603 1 $\mu$ F 10% 16V X7R	TDK C1608X7R1C105K
7	2	C7, C19	Capacitor, 0603 0.1 $\mu$ F 10% 50V X7R	TDK C1608X7R1H104K
8	3	C8, C11, C14	Capacitor, 7343 220 $\mu$ F 20% 6.3V POSCAP	SANYO POSCAP 6TPE220ML
9	3	D1, D2, D3	Diode, Rectifier, Barrier, Schottky 1.0A	Diodes Inc. DFSL160
10	32	LED00-LED31	LED, Top, 6-Lead	OSRAM LRTB-G6TG
11	3	L1, L2, L3	Inductor, 15 $\mu$ H	Würth 744778115
12	3	Q1, Q2, Q3	XSTR, P-channel MOSFET	Vishay Si9407BDY
13	3	R1, R17, R18	Resistor, 1206 0.03 $\Omega$ 1% 1/8W	IRC LR1206LF-01-R030-F
14	1	R2	Resistor, 0603 499k $\Omega$ 1% 1/10W	Vishay CRCW0603499KFKEA
15	1	R3	Resistor, 0603 100k $\Omega$ 1% 1/10W	NIC NRC06F1003TRF
16	3	R4, R19, R20	Resistor, 0603 133k $\Omega$ 1% 1/10W	Vishay CRCW0603133KFKEA
17	4	R5, R7, R21, R23	Resistor, 0603 10.0k $\Omega$ 1% 1/10W	Vishay CRCW060310K0FKED
18	1	R6	Resistor, 0603 15.0k $\Omega$ 1% 1/10W	YAGEO RC0603FR-0715KL
19	3	R8, R25, R26	Resistor, 0603 60.4k $\Omega$ 1% 1/10W	Vishay CRCW060360K4FKEA
20	3	R9, R27, R28	Resistor, 0603 51.1k $\Omega$ 1% 1/10W	NIC NRC06F5112TRF
21	1	R10	Resistor, 0603 20.5k $\Omega$ 1% 1/10W	Vishay CRCW060320K5FKED
22	1	R13	Resistor, 0603 12.4k $\Omega$ 1% 1/10W	Vishay CRCW060312K4FKED
23	3	R14, R15, R16	Resistor, 0603 5.1k $\Omega$ 1% 1/10W	Vishay CRCW06035K10FKED
24	2	R22, R24	Resistor, 0603 24.9k $\Omega$ 1% 1/10W	NIC NRC06F2492TRF
25	1	R29	Resistor, 0603 20k $\Omega$ 1% 1/10W	Vishay CRCW060320K0FKEA
26	3	R31, R32, R33	Resistor, 0603 5.11 $\Omega$ 1% 1/10W	AAC CR16-R11FM
27	3	U1, U2, U3	IC, LT3746EUHH	Linear Technology LT3746EUHH
28	1	U4	IC, LT3010EMS8E	Linear Technology LT3010EMS8E
29	1	U5	IC, LTC1799CS5	Linear Technology LTC1799CS5
30	1	U6	IC, 24LC025-I/ST	Microchip Tech. 24LC025-I/ST
<b>Additional Demo Board Circuit Components</b>				
1	1	C1N1	Capacitor, 22 $\mu$ F 20% 50V	Sanyo 50CE22BS
2	0	R30	Resistor, 0603 0 $\Omega$ Jumper Option	Vishay CRCW06030000Z0ED Option
<b>Hardware</b>				
1	2	TP1, TP2	Turrets	Mill-Max 2501-2-00-80-00-00-07-0
2	14	TP3, TP41, TP54-TP59, TP75, TP77, TP79, TP81, TP83, TP84	Turrets	Mill-Max 2308-2-00-80-00-00-07-0
3	2	JP1, JP2	Header, 3-Pin, 2mm	Samtec TMM-103-02-L-S
4	1	J1	Header, 2 $\times$ 7 2mm	MOLEX 87831-1420
5	0	J2	Header, 2 $\times$ 7 2mm Option	MOLEX 87831-1420 Option
6	2	JP1, JP2	Shunt, 2mm	Samtec 2SN-BK-G
7	4		Standoff, Snap-On	Keystone_8831

SCHEMATIC DIAGRAMS



REVISION HISTORY			
ECO	REV	DESCRIPTION	DATE
	2	PRODUCTION	04/20/11
	1	APPROVED	WEIG

APPROVALS		
PCB DES.	APP ENG.	WITG.
MS		

**CUSTOMER NOTICE**  
LINEAR TECHNOLOGY HAS MADE A BEST EFFORT TO DESIGN A CIRCUIT THAT MEETS CUSTOMER-SUPPLIED SPECIFICATIONS AND TO VERIFY PROPER AND RELIABLE OPERATION IN THE ACTUAL APPLICATION. COMPONENT SUBSTITUTION AND PRINTED CIRCUIT BOARD MANUFACTURING VARIATIONS MAY AFFECT CIRCUIT PERFORMANCE OR RELIABILITY. CONTACT LINEAR TECHNOLOGY APPLICATIONS ENGINEERING FOR ASSISTANCE.

**CUSTOMER NOTICE**  
THIS CIRCUIT IS PROPRIETARY TO LINEAR TECHNOLOGY AND SUPPLIED FOR USE WITH LINEAR TECHNOLOGY PARTS.

TITLE	
32-CHANNEL LED DRIVER WITH BUCK CONTROLLER	
SIZE	IC NO
N/A	LT3746EJUH
SCALE	SCALE # NONE
DATE	DATE: Wednesday, April 20, 2011
REV	SHEET
2	1 OF 3

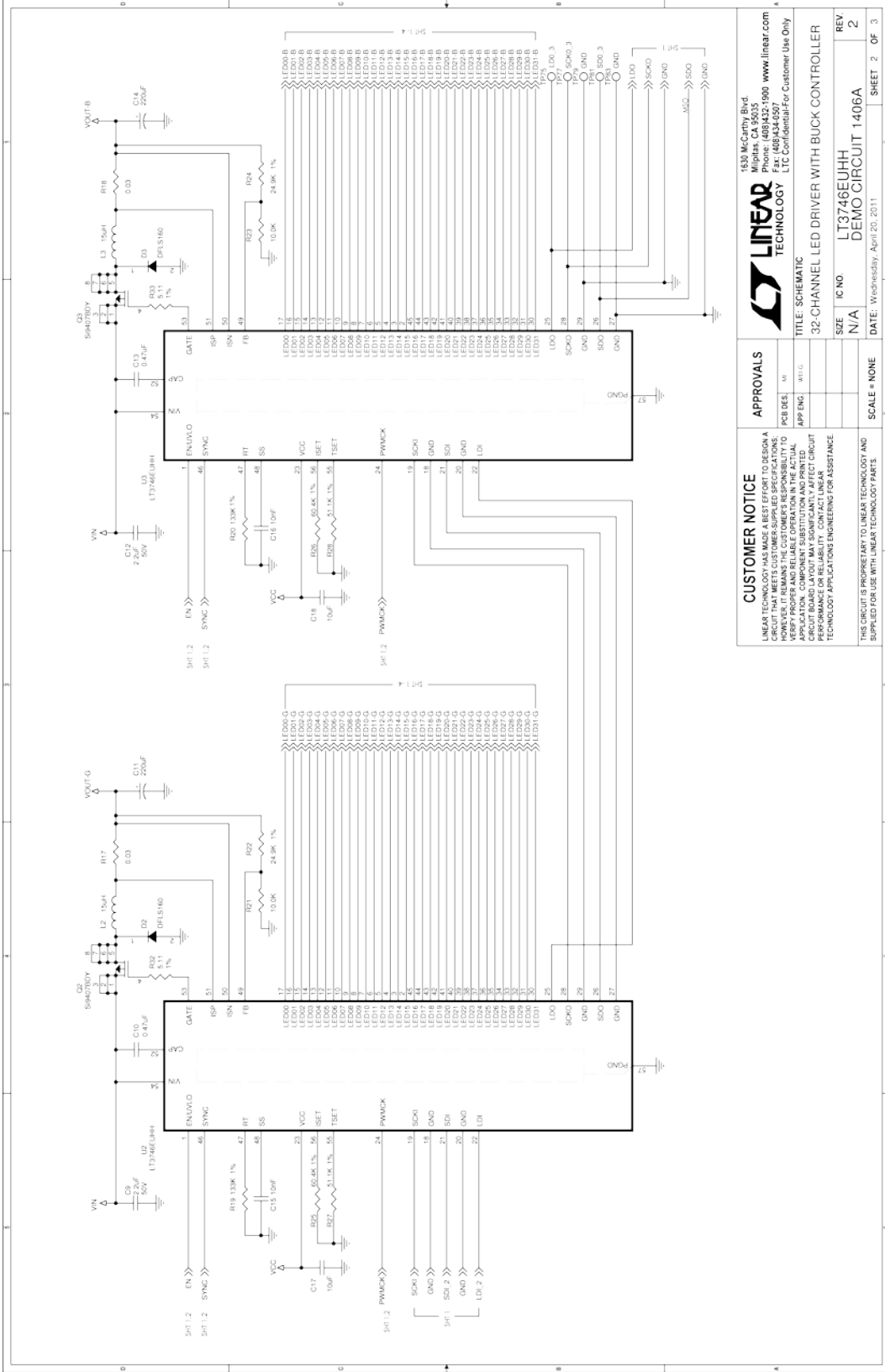
1330 McCarty Blvd  
Milpitas, CA 95035  
Phone: (408)432-1900 www.linear.com  
Fax: (408)434-6507  
LTC Confidential - For Customer Use Only

**LINEAR TECHNOLOGY**

PCB FOOTPRINT (TOP VIEW)

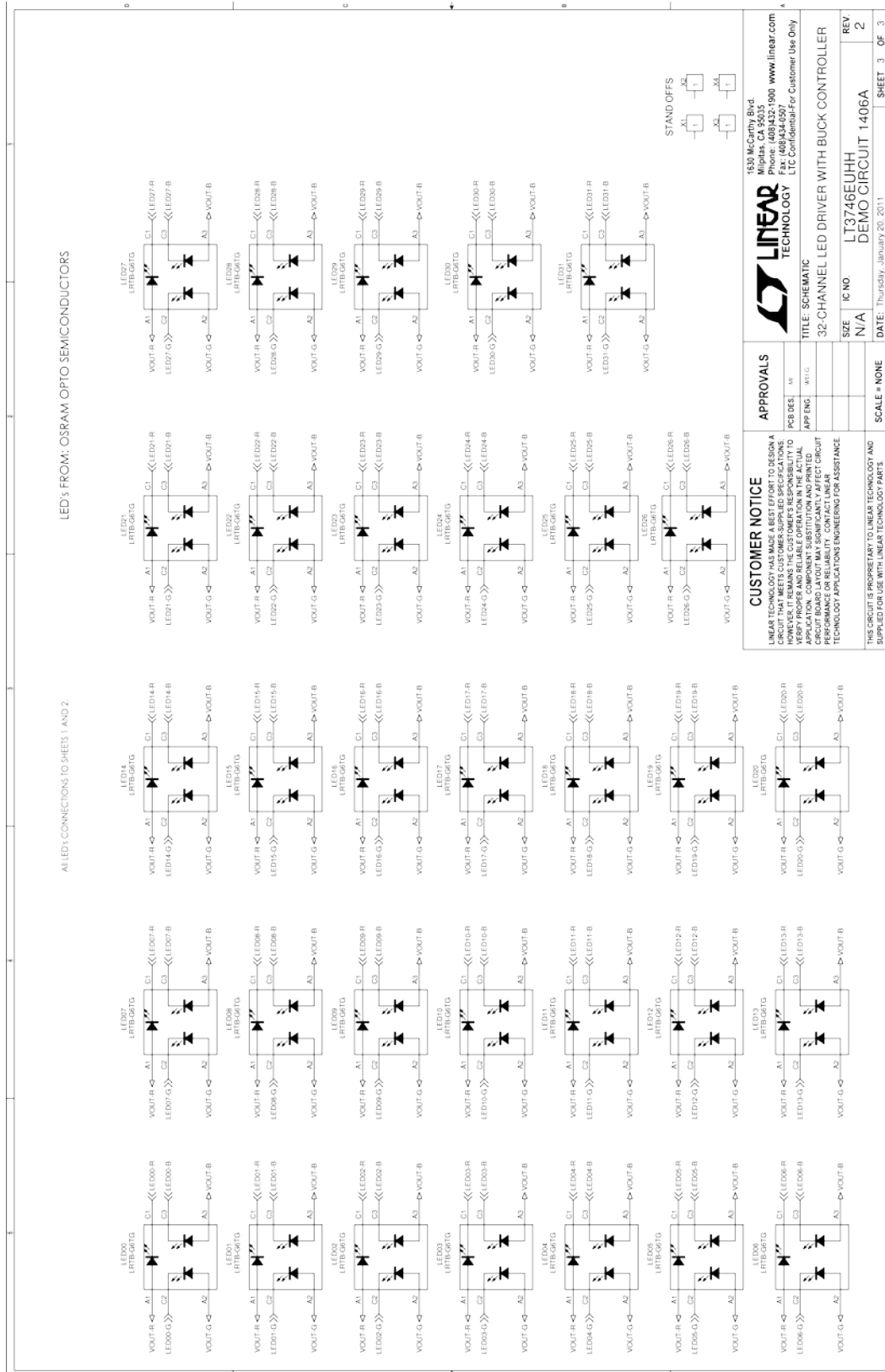
# DEMO MANUAL DC1406A

## SCHEMATIC DIAGRAMS



<b>CUSTOMER NOTICE</b> LINEAR TECHNOLOGY HAS MADE A BEST EFFORT TO DESIGN A CIRCUIT THAT MEETS CUSTOMER-SUPPLIED SPECIFICATIONS. CUSTOMERS ARE RESPONSIBLE FOR VERIFYING THE PERFORMANCE OF THE CIRCUIT IN THEIR APPLICATION. COMPONENT SUBSTITUTION AND PRINTED BOARD MANUFACTURING VARIATIONS MAY AFFECT CIRCUIT PERFORMANCE OR RELIABILITY. CONTACT LINEAR TECHNOLOGY APPLICATIONS ENGINEERING FOR ASSISTANCE.		<b>APPROVALS</b> DESIGN: [ ] APP ENG: [ ] SCALE: NONE	
<b>LINEAR TECHNOLOGY</b> 1635 McCarty Blvd Phone: 408-432-1900 www.linear.com Fax: 408-434-6507 LTC Confidential/For Customer Use Only		TITLE: SCHEMATIC 32-CHANNEL LED DRIVER WITH BUCK CONTROLLER	
SIZE	IC NO.	REV	
N/A	LT3746EUHH	2	
DATE: Wednesday, April 20, 2011		SHEET 2 OF 3	

SCHEMATIC DIAGRAMS



**LINEAR TECHNOLOGY**  
1639 McCarty Blvd  
Folsom, CA 95630  
Phone: (408)432-1900 www.linear.com  
Fax: (408)434-6507  
LTC Confidential For Customer Use Only

**CUSTOMER NOTICE**  
LINEAR TECHNOLOGY HAS MADE A BEST EFFORT TO DESIGN A CIRCUIT THAT MEETS CUSTOMER-SUPPLIED SPECIFICATIONS AND TO PROVIDE A DESIGN THAT CAN BE REPRODUCED AND TO VERIFY PROPER AND RELIABLE OPERATION IN THE ACTUAL APPLICATION. COMPONENT SUBSTITUTION AND PRINTED CIRCUIT BOARD MANUFACTURING VARIATIONS MAY AFFECT CIRCUIT PERFORMANCE OR RELIABILITY. CONTACT LINEAR TECHNOLOGY APPLICATIONS ENGINEERING FOR ASSISTANCE.

**APPROVALS**

DESIGN	DATE
APP ENG	SCALE = NONE

**32-CHANNEL LED DRIVER WITH BUCK CONTROLLER**

IC NO: **LT3746EUHH**

DATE: Thursday, January 20, 2011

REV: **2**

SHEET: **3** OF **3**

# DEMO MANUAL DC1406A

---

## DEMONSTRATION BOARD IMPORTANT NOTICE

Linear Technology Corporation (LTC) provides the enclosed product(s) under the following **AS IS** conditions:

This demonstration board (DEMO BOARD) kit being sold or provided by Linear Technology is intended for use for **ENGINEERING DEVELOPMENT OR EVALUATION PURPOSES ONLY** and is not provided by LTC for commercial use. As such, the DEMO BOARD herein may not be complete in terms of required design-, marketing-, and/or manufacturing-related protective considerations, including but not limited to product safety measures typically found in finished commercial goods. As a prototype, this product does not fall within the scope of the European Union directive on electromagnetic compatibility and therefore may or may not meet the technical requirements of the directive, or other regulations.

If this evaluation kit does not meet the specifications recited in the DEMO BOARD manual the kit may be returned within 30 days from the date of delivery for a full refund. **THE FOREGOING WARRANTY IS THE EXCLUSIVE WARRANTY MADE BY THE SELLER TO BUYER AND IS IN LIEU OF ALL OTHER WARRANTIES, EXPRESSED, IMPLIED, OR STATUTORY, INCLUDING ANY WARRANTY OF MERCHANTABILITY OR FITNESS FOR ANY PARTICULAR PURPOSE. EXCEPT TO THE EXTENT OF THIS INDEMNITY, NEITHER PARTY SHALL BE LIABLE TO THE OTHER FOR ANY INDIRECT, SPECIAL, INCIDENTAL, OR CONSEQUENTIAL DAMAGES.**

The user assumes all responsibility and liability for proper and safe handling of the goods. Further, the user releases LTC from all claims arising from the handling or use of the goods. Due to the open construction of the product, it is the user's responsibility to take any and all appropriate precautions with regard to electrostatic discharge. Also be aware that the products herein may not be regulatory compliant or agency certified (FCC, UL, CE, etc.).

No License is granted under any patent right or other intellectual property whatsoever. **LTC assumes no liability for applications assistance, customer product design, software performance, or infringement of patents or any other intellectual property rights of any kind.**

LTC currently services a variety of customers for products around the world, and therefore this transaction **is not exclusive**.

**Please read the DEMO BOARD manual prior to handling the product.** Persons handling this product must have electronics training and observe good laboratory practice standards. **Common sense is encouraged.**

This notice contains important safety information about temperatures and voltages. For further safety concerns, please contact a LTC application engineer.

Mailing Address:

Linear Technology  
1630 McCarthy Blvd.  
Milpitas, CA 95035

Copyright © 2004, Linear Technology Corporation



## X-ON Electronics

Largest Supplier of Electrical and Electronic Components

*Click to view similar products for [LED Lighting Development Tools](#) category:*

*Click to view products by [Analog Devices](#) manufacturer:*

Other Similar products are found below :

[MIC2870YFT EV](#) [ADP8860DBCP-EVALZ](#) [LM3404MREVAL](#) [ADM8843EB-EVALZ](#) [TDGL014](#) [ISL97682IRTZEVALZ](#) [LM3508TLEV](#)  
[EA6358NH](#) [MAX16826EVKIT](#) [MAX16839EVKIT+](#) [TPS92315EVM-516](#) [MAX1698EVKIT](#) [MAX6956EVKIT+](#) [OM13321,598](#) [DC986A](#)  
[DC909A](#) [DC824A](#) [STEVAL-LLL006V1](#) [IS31LT3948-GRLS4-EB](#) [104PW03F](#) [PIM526](#) [PIM527](#) [MAX6946EVKIT+](#) [MAX20070EVKIT#](#)  
[MAX21610EVKIT#](#) [MAX20090BEVKIT#](#) [MAX20092EVSYS#](#) [PIM498](#) [AP8800EV1](#) [ZXLD1370/1EV4](#) [MAX6964EVKIT](#)  
[MAX25240EVKIT#](#) [MAX25500TEVKITC#](#) [MAX77961BEVKIT06#](#) [1216.1013](#) [TPS61176EVM-566](#) [TPS61197EVM](#) [TPS92001EVM-628](#)  
[1270](#) [1271.2004](#) [1272.1030](#) [1273.1010](#) [1278.1010](#) [1279.1002](#) [1279.1001](#) [1282.1000](#) [1293.1900](#) [1293.1800](#) [1293.1700](#) [1293.1500](#)