

LT3645

0.5A, 36V Step-Down Regulator with LDO

DESCRIPTION

Demonstration circuit 1428A features the LT[®]3645. The circuit is designed to convert a 5V to 36V input source to 3.3V at 300mA and 2.5V at 200mA. JP1 and JP2 enable and disable the 3.3V output and the 2.5V output respectively. LDO only operates if both, EN/UVLO and EN2 are greater than 1.2V. Demo board includes an optional resistor, R8, for easy implementation of UVLO. The LT3645 data sheet gives a complete description of the part, its operation and

application information. The data sheet must be read in conjunction with this quick start guide for working on or modifying the demo circuit 1428A.

Design files for this circuit board are available at <http://www.linear.com/demo>

LT, LT, LTC, LTM, μModule, Linear Technology and the Linear logo are registered trademarks of Linear Technology Corporation. All other trademarks are the property of their respective owners.

PERFORMANCE SUMMARY (T_A = 25°C)

SYMBOL	PARAMETER	CONDITIONS	MIN	TYP	MAX	UNITS
V _{IN}	Input Supply Range		5		36	V
3.3V _{OUT}	Buck Output Voltage Accuracy	V _{IN} = 5V to 36V, I _{LOAD} = 500mA	3.226	3.3	3.374	V
2.5V _{OUT}	LDO Output Voltage Accuracy	V _{IN} = 5V to 36V, I _{LOAD} = 200mA	2.444	2.5	2.556	V
Efficiency		V _{IN} = 5V, I _{LOAD} = 500mA for Buck, 0mA for LDO		83		%
		V _{IN} = 5V, I _{LOAD} = 300mA for Buck, 200mA for LDO		75		%
Buck V _{OUT} Ripple		V _{IN} = 5V, I _{LOAD} = 500mA		10		mV
LDO V _{OUT} Ripple		V _{IN} = 5V to 36V, I _{LOAD} = 200mA		1		mV
f _S	Switching Frequency			750		kHz

QUICK START PROCEDURE

Demonstration circuit 1428A is easy to set up to evaluate the performance of the LT3645. Refer to Figures 1 and 2 for proper measurement equipment setup and follow the procedure below:

To measure the input or output voltage ripple, care must be taken to avoid a long ground lead on the oscilloscope probe. Measure the input or output voltage ripple by touching the probe tip directly across the V_{IN} or V_{OUT} and GND terminals. See Figure 2 for proper scope probe technique.

1. Place jumpers in the following position:

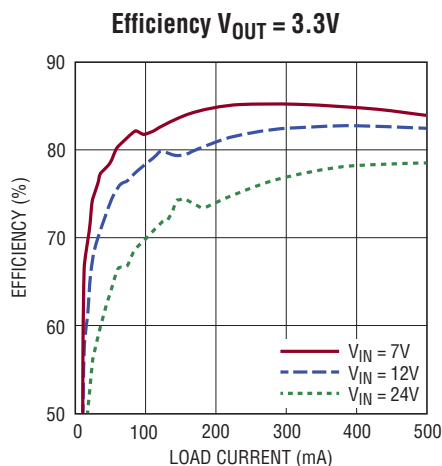
JP1 ON

JP2 ON

2. With power off, connect the input power supply to V_{IN} and GND. Apply 5V to input and check for the proper output voltages.

NOTE: If there is no output, temporarily disconnect the load to make sure that the load is not set too high.

Once the proper output voltage is established, adjust the load within the operating range and observe the output voltage regulation, ripple voltage, efficiency and other parameters.



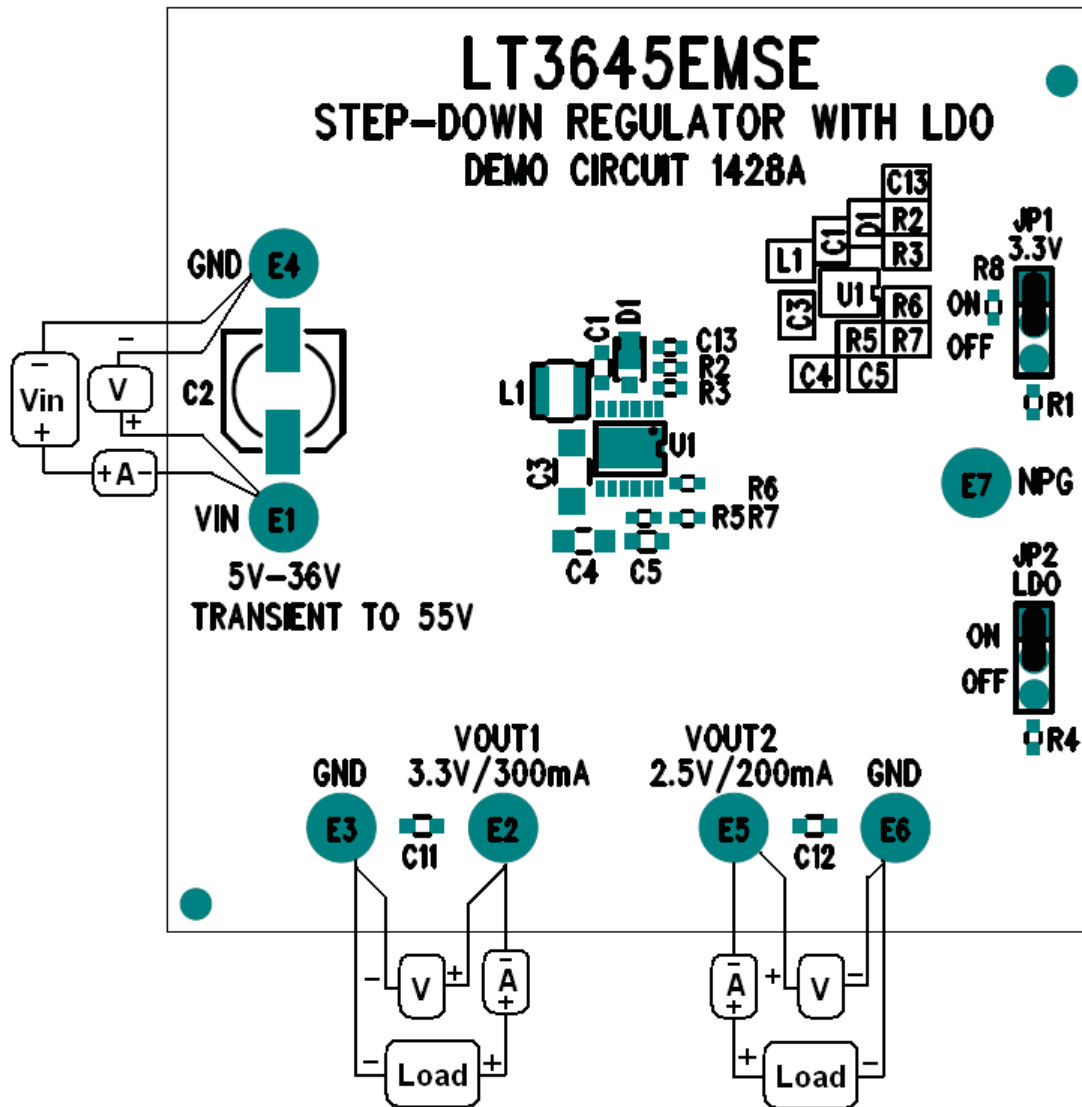


Figure 1. DC1428A Proper Equipment Set-Up

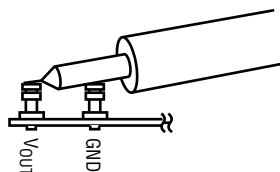


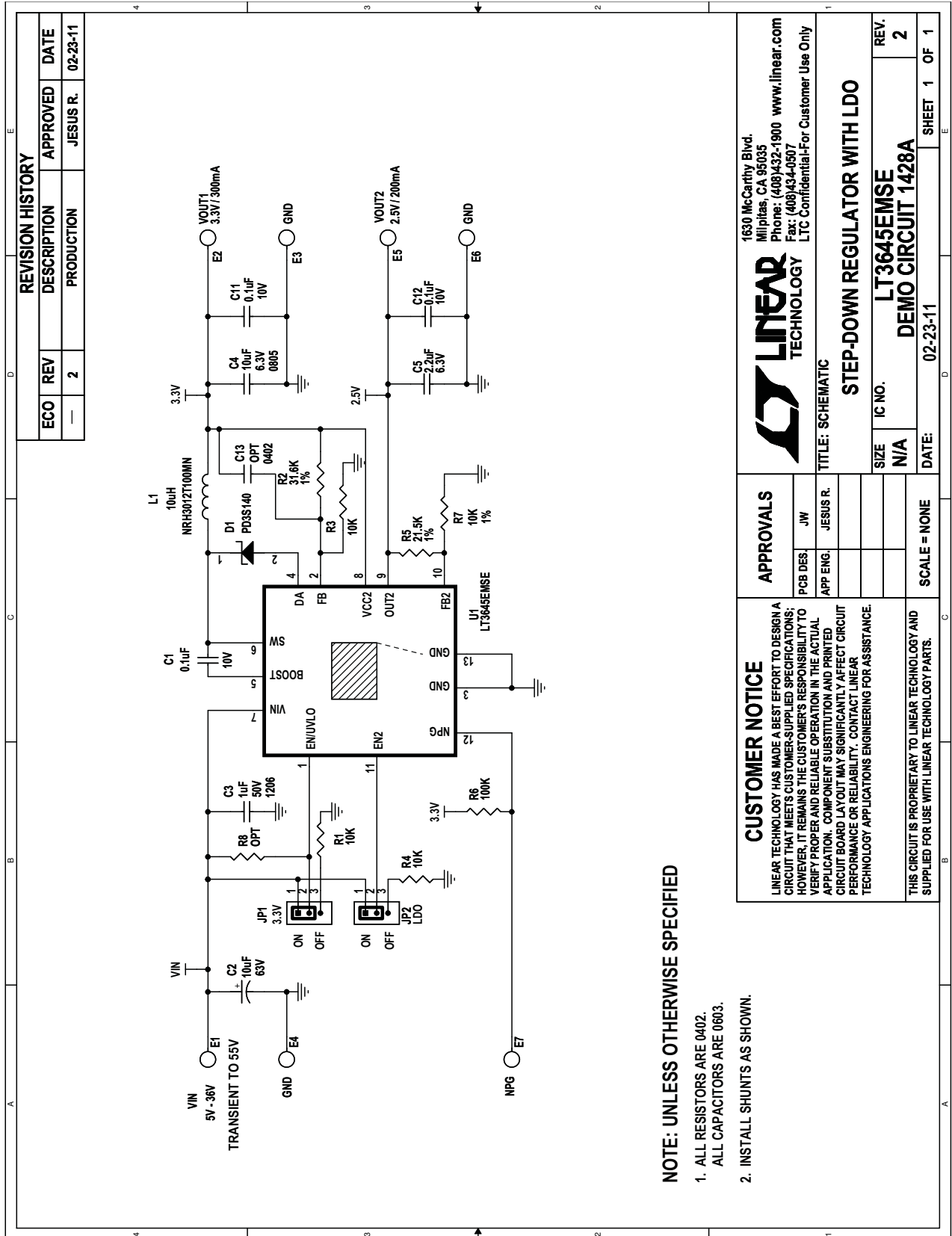
Figure 2. Proper Input/Output Ripple Measurement Technique

DEMO MANUAL DC1428A

PARTS LIST

ITEM	QTY	REFERENCE	PART DESCRIPTION	MANUFACTURER/PART NUMBER
Required Circuit Components				
1	1	C1	Capacitor, X7R, 0.1 μ F, 10V, 10%, 0603	AVX, 0603ZC104KAT2A
2	1	C2	Capacitor, Tantalum, 10 μ F, 63V	Suncon, 63CE10BS
3	1	C3	Capacitor, X7R, 1 μ F, 50V, 10%, 1206	Murata, GCM31MR71H105KA55L
4	1	C4	Capacitor, X5R, 10 μ F, 6.3V, 0805	AVX, 08056D106MAT2A
5	1	C5	Capacitor, X5R, 2.2 μ F, 6.3V, 10%, 0603	AVX, 06036D225KAT2A
6	1	D1	Schottky Barrier Rect., 1A, power, DI323	Diodes Inc. PD3S140
7	1	L1	Inductor 10 μ H	Taiyo Yuden, NRH3012T100MN
8	2	R1, R4	Resistor, 10k, 1/16W, 5%, 0402	Vishay, CRCW040210K0JNED
9	1	R2	Resistor, 31.6k, 1/16W, 1%, 0402	Vishay, CRCW040231K6FKED
10	2	R3, R7	Resistor, 10k, 1/16W, 1%, 0402	Vishay, CRCW040210KFKED
11	1	R5	Resistor, 21.5k, 1/16W, 1%, 0402	Vishay, CRCW040221K5FKED
12	1	R6	Resistor, 100k, 1/16W, 5%, 0402	Vishay, CRCW04021003JKED
13	1	U1	IC, LT3645EMSE	Linear Technology, LT3645EMSE
14	1		Fab, Printed Circuit Board	Demo Circuit 1428A
Additional Demo Board Circuit Components				
1	2	C11, C12	Capacitor, X7R, 0.1 μ F, 10V, 10%, 0603	AVX, 0603ZC104KAT2A
2	0	C13 (OPT)	Capacitor, 0402	
3	0	R8 (OPT)	Resistor, 0402	
Hardware/Components (For Demo Board Only)				
1	7	E1-E7	Testpoint, Turret, 0.094"	Mill-Max, 2501-2-00-80-00-00-07-0
2	2	JP1, JP2	Header, 3-Pin, 1 Row, 0.079CC	Samtec, TMM-103-02-LS
3	2	XJP1, XJP2	Shunt, 0.079" Center	Samtec, 2SN-BK-G

SCHEMATIC DIAGRAM



REVISION HISTORY				
ECO	REV	DESCRIPTION	APPROVED	DATE
—	2	PRODUCTION	JESUS R.	02-23-11

LINEAR TECHNOLOGY
 1630 McCarthy Blvd.
 Milpitas, CA 95035
 Phone: (408)432-1900 www.linear.com
 Fax: (408)434-0507
 LTC Confidential-For Customer Use Only

STEP-DOWN REGULATOR WITH LDO
 DEMO CIRCUIT 1428A

IC NO. **LT3645EMSE**
 REV. **2**

DATE: **02-23-11**
 SHEET **1** OF **1**

APPROVALS	
PCB DES	JW
APP ENG.	JESUS R.
SCALE	NONE

CUSTOMER NOTICE
 LINEAR TECHNOLOGY HAS MADE A BEST EFFORT TO DESIGN A CIRCUIT THAT MEETS CUSTOMER-SUPPLIED SPECIFICATIONS; HOWEVER, IT REMAINS THE CUSTOMER'S RESPONSIBILITY TO VERIFY PROPER AND RELIABLE OPERATION IN THE ACTUAL APPLICATION. COMPONENT SUBSTITUTION AND PRINTED CIRCUIT BOARD LAYOUT MAY SIGNIFICANTLY AFFECT CIRCUIT PERFORMANCE OR RELIABILITY. CONTACT LINEAR TECHNOLOGY APPLICATIONS ENGINEERING FOR ASSISTANCE.

THIS CIRCUIT IS PROPRIETARY TO LINEAR TECHNOLOGY AND SUPPLIED FOR USE WITH LINEAR TECHNOLOGY PARTS.

- NOTE: UNLESS OTHERWISE SPECIFIED**
1. ALL RESISTORS ARE 0402.
 - ALL CAPACITORS ARE 0603.
 2. INSTALL SHUNTS AS SHOWN.

DEMO MANUAL DC1428A

DEMONSTRATION BOARD IMPORTANT NOTICE

Linear Technology Corporation (LTC) provides the enclosed product(s) under the following **AS IS** conditions:

This demonstration board (DEMO BOARD) kit being sold or provided by Linear Technology is intended for use for **ENGINEERING DEVELOPMENT OR EVALUATION PURPOSES ONLY** and is not provided by LTC for commercial use. As such, the DEMO BOARD herein may not be complete in terms of required design-, marketing-, and/or manufacturing-related protective considerations, including but not limited to product safety measures typically found in finished commercial goods. As a prototype, this product does not fall within the scope of the European Union directive on electromagnetic compatibility and therefore may or may not meet the technical requirements of the directive, or other regulations.

If this evaluation kit does not meet the specifications recited in the DEMO BOARD manual the kit may be returned within 30 days from the date of delivery for a full refund. **THE FOREGOING WARRANTY IS THE EXCLUSIVE WARRANTY MADE BY THE SELLER TO BUYER AND IS IN LIEU OF ALL OTHER WARRANTIES, EXPRESSED, IMPLIED, OR STATUTORY, INCLUDING ANY WARRANTY OF MERCHANTABILITY OR FITNESS FOR ANY PARTICULAR PURPOSE. EXCEPT TO THE EXTENT OF THIS INDEMNITY, NEITHER PARTY SHALL BE LIABLE TO THE OTHER FOR ANY INDIRECT, SPECIAL, INCIDENTAL, OR CONSEQUENTIAL DAMAGES.**

The user assumes all responsibility and liability for proper and safe handling of the goods. Further, the user releases LTC from all claims arising from the handling or use of the goods. Due to the open construction of the product, it is the user's responsibility to take any and all appropriate precautions with regard to electrostatic discharge. Also be aware that the products herein may not be regulatory compliant or agency certified (FCC, UL, CE, etc.).

No License is granted under any patent right or other intellectual property whatsoever. **LTC assumes no liability for applications assistance, customer product design, software performance, or infringement of patents or any other intellectual property rights of any kind.**

LTC currently services a variety of customers for products around the world, and therefore this transaction **is not exclusive**.

Please read the DEMO BOARD manual prior to handling the product. Persons handling this product must have electronics training and observe good laboratory practice standards. **Common sense is encouraged.**

This notice contains important safety information about temperatures and voltages. For further safety concerns, please contact a LTC application engineer.

Mailing Address:

Linear Technology
1630 McCarthy Blvd.
Milpitas, CA 95035

Copyright © 2004, Linear Technology Corporation

X-ON Electronics

Largest Supplier of Electrical and Electronic Components

Click to view similar products for [Power Management IC Development Tools](#) category:

Click to view products by [Analog Devices](#) manufacturer:

Other Similar products are found below :

[EVAL-ADM1168LQEBZ](#) [EVB-EP5348UI](#) [MIC23451-AAAYFL EV](#) [MIC5281YMME EV](#) [DA9063-EVAL](#) [ADP122-3.3-EVALZ](#) [ADP130-0.8-EVALZ](#) [ADP130-1.2-EVALZ](#) [ADP130-1.5-EVALZ](#) [ADP130-1.8-EVALZ](#) [ADP1714-3.3-EVALZ](#) [ADP1716-2.5-EVALZ](#) [ADP1740-1.5-EVALZ](#) [ADP1752-1.5-EVALZ](#) [ADP1828LC-EVALZ](#) [ADP1870-0.3-EVALZ](#) [ADP1871-0.6-EVALZ](#) [ADP1873-0.6-EVALZ](#) [ADP1874-0.3-EVALZ](#) [ADP1882-1.0-EVALZ](#) [ADP199CB-EVALZ](#) [ADP2102-1.25-EVALZ](#) [ADP2102-1.875EVALZ](#) [ADP2102-1.8-EVALZ](#) [ADP2102-2-EVALZ](#) [ADP2102-3-EVALZ](#) [ADP2102-4-EVALZ](#) [ADP2106-1.8-EVALZ](#) [ADP2147CB-110EVALZ](#) [AS3606-DB](#) [BQ24010EVM](#) [BQ24075TEVM](#) [BQ24155EVM](#) [BQ24157EVM-697](#) [BQ24160EVM-742](#) [BQ24296MEVM-655](#) [BQ25010EVM](#) [BQ3055EVM](#) [NCV891330PD50GEVB](#) [ISLUSBI2CKIT1Z](#) [LM2744EVAL](#) [LM2854EVAL](#) [LM3658SD-AEV/NOPB](#) [LM3658SDEV/NOPB](#) [LM3691TL-1.8EV/NOPB](#) [LM4510SDEV/NOPB](#) [LM5033SD-EVAL](#) [LP38512TS-1.8EV](#) [EVAL-ADM1186-1MBZ](#) [EVAL-ADM1186-2MBZ](#)