

LTC3862-2

High Power, High Voltage Step-Up Converter

DESCRIPTION

Demonstration circuit 2006A-A is a multiphase high power, high voltage step-up DC/DC converter featuring the [LTC®3862-2](#) boost controller. This demo board converts a 6V to 36V input voltage to a 50V output at up to 10A with four phases by utilizing and synchronizing two LTC3862-2 controller IC's.

The DC2006A-A supports three ways of biasing the LTC3862-2 controllers IC's by directly from the input voltage, or from a low power switching power supply or from an LDO regulator.

An onboard SEPIC power supply can provides a stable 10V bias voltage for both LTC3862-2 controllers over the wide varying input voltage. This allows the use of either logic level or standard level MOSFETs, even when the input voltage drops far below the 10V set-point, which is useful in wide varying input applications.

An onboard LDO regulator can be selected for biasing the LTC3862-2 controllers, which simplifies the electrical schematic and can be very useful in applications where the input voltage is always higher than the required gate drive voltage.

The LTC3862-2 is a multiphase step-up (boost) DC/DC controller that delivers high output power in a compact footprint. Up to 12 power stages can be paralleled and clocked out-of-phase to minimize input and output filtering requirements. It has a 5.5V to 36V input voltage range and an output voltage range that is dependent on the choice of external components.

The LTC3862-2 utilizes peak current mode architecture for easy loop compensation and multiphase operation with very accurate phase-to-phase current matching. The fixed operating frequency can be set with a single resistor over a 75kHz to 500kHz range or can be synchronized to an external clock over a 50kHz to 600kHz frequency range. A current sense resistor is used in each phase to provide a precise cycle-by-cycle current limit. The powerful on-board gate drivers minimize switching losses and allow the use of multiple MOSFETs in parallel for very high current applications.

Design files for this circuit board are available at <http://www.linear.com/demo>

LT, LT, LTC, LTM, Linear Technology and the Linear logo are registered trademarks of Linear Technology Corporation. All other trademarks are the property of their respective owners.

PERFORMANCE SUMMARY

PARAMETER	CONDITIONS	VALUE	UNITS
Minimum Input Supply Voltage		6	V
Maximum Input Supply Voltage		36	V
Output Voltage Range	$V_{IN} = 6V \text{ to } 36V, I_{OUT1} = 0A \text{ to } 10A$	$50 \pm 2\%$	V
Typical Switching frequency		200	kHz
Typical Output Ripple ($V_{OUT}, 50V$)	$I_{LOAD} = 5.0A$	120	mV
Efficiency Typical ($V_{OUT}, 50V, V_{IN} 24V$)	See Figure 3	97	%

QUICK START PROCEDURE

Demonstration circuit 2006 is easy to set up to evaluate the performance of the LTC3862-2 controllers. Refer to Figure 1 for proper measurement equipment setup and follow the procedure below:

NOTE. When measuring the input or output voltage ripple, care must be taken to avoid a long ground lead on the oscilloscope probe. Measure the input or output voltage ripple by touching the probe tip directly across the V_{IN} or V_{OUT} and GND terminals. See Figure 2 for proper scope probe technique.

1. Place jumper RUN1 (JP11) in the ON position. Place jumper RUN2 (JP10) in ON position also. Note: circuit will not operate if jumper RUN2 (JP10) is in OFF position.
2. Place jumper BIAS (JP12) to the V_{IN} position.
3. With power off, connect the input power supply to V_{IN} and GND.

Turn the input power source on and slowly increase the input voltage. Be careful not to exceed 36V.

NOTE: Make sure that the input voltage V_{IN} does not exceed 36V. If higher operating voltage is required, power components with higher voltage ratings should be used.

4. Check for the proper output voltage of 50V. If there is no output, temporarily disconnect the load to make sure that the load is not set too high.
5. Once the proper output voltages are established, adjust the load within the operating range and observe the output voltage regulation, ripple voltage, efficiency and other parameters.

LTC3862-2 BIAS CIRCUITS

The demo board DC2006A supports three ways of biasing LTC3862 controllers. Place jumper BIAS (JP12) to the V_{IN} position for input voltage above 10V, but below 36V. In this case bias pins of LTC3862-2 controllers will be connected directly to the input voltage.

Place jumper BIAS (JP12) to the AUX position for input voltage that can drop below 10V. The bias pins of LTC3862-2 controllers will be connected directly to the low power SEPIC converter, which provides regulated 10V.

The demo board DC2006A can be used for higher than 36V input voltages. In that case, the bias power for LTC3862-2 has to be limited under 36V. An external power source can be used to accomplish this or the optional bias regulator can be used. Remove R44 and R47 resistors and install 0 Ω resistors R44 and R42.

Place jumper BIAS (JP12) to the AUX position. Since the power dissipation in linear regulator Q17 depends on the size of MOSFETs, switching frequency and voltage difference across Q17, all of the factors need to be considered when selecting the appropriate device for Q17. Please refer to LTC3862-2 data sheet.

CONVERTER EFFICIENCY

DC2006A-A efficiency exceeds 96% at 12V input voltage generating 50V at 10.0A and 97% at 14V input voltage, see Figure 3. However output (load) current should be decreased at input voltages below 10V to reduce thermal stress on the converter. Figure 4 demonstrates maximum load current, as a function of input voltage, assuming 50V output voltage.

All measurements were conducted at room temperature, natural convection cooling with no air flow.

QUICK START PROCEDURE

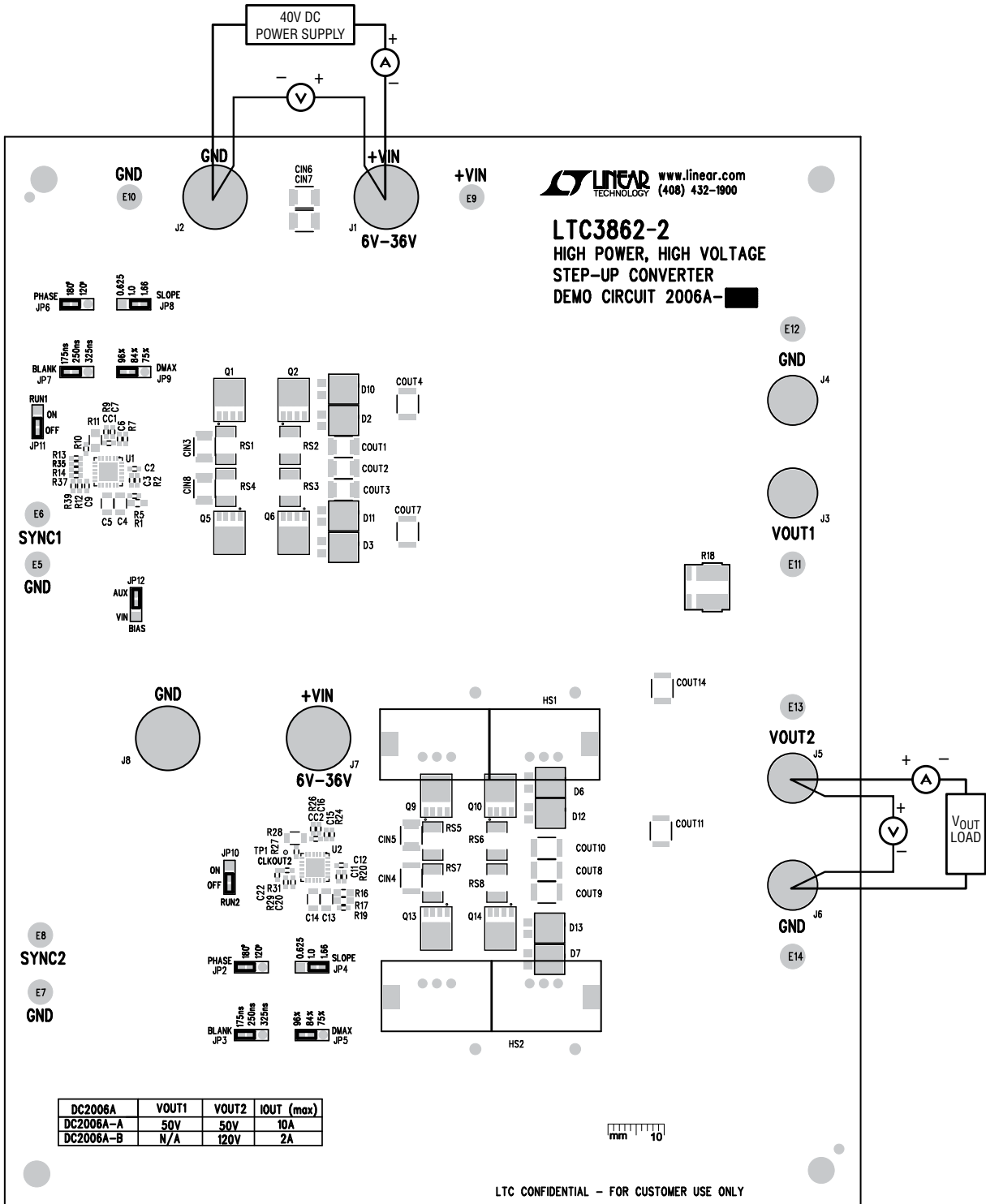


Figure 1. Proper Measurement Equipment Setup

DEMO MANUAL DC2006A-A

QUICK START PROCEDURE

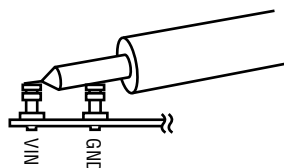


Figure 2. Measuring Input or Output Ripple

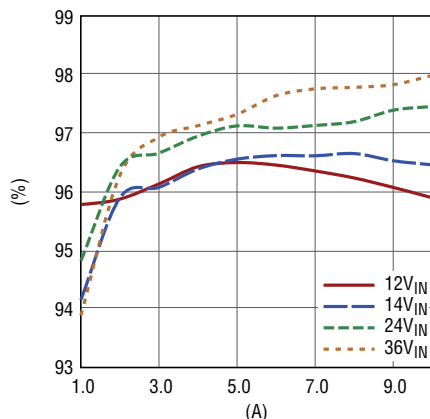


Figure 3. DC2006A-A, Efficiency vs Load

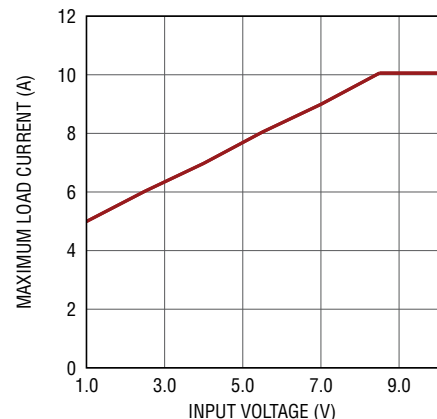


Figure 4. Load Current Derating vs Input Voltage

PARTS LIST

ITEM	QTY	REFERENCE	PART DESCRIPTION	MANUFACTURER/PART NUMBER
Required Circuit Components				
1	2	CC1, CC2	Cap., NPO 220pF, 25V, 5%, 0603	MURATA, CGM1885C1H221JA16D
2	2	CIN1, CIN2	Cap., Alum 220μF, 50V, 12.8 × 12.8	SUN ELECT., 50CE220KX
3	8	CIN3-CIN10	Cap., X5R 10uF, 50V, 20%, 1812	TDK, CKG45NX5R1H106M
4	10	COUT1-COUT4, COUT7-COUT11, COUT14	Cap., X7S 4.7μF, 100V, 10%, 1812	TDK, C4532X7S2A475K
5	4	COUT5, COUT6, COUT12, COUT13	Cap., Alum. Elect. 100μF, 63V	SUN ELECT., 63CE100KX
6	5	C1, C8, C10, C17, C28	Cap., X7R 0.1μF, 25V, 10%, 0603	AVX, 06033C104KAT2A
7	2	C6, C15	Cap., X7R 0.47μF, 16V, 10%, 0603	AVX, 0603YC474KAT2A
8	2	C2, C12	Cap., NPO 1nF, 25V, 5%, 0603	AVX, 06033A102JAT2A
9	7	C3, C7, C9, C11, C20, C22, C26	Cap., X7R 10nF, 25V, 5%, 0603	AVX, 06033C103JAT2A
10	3	C4, C13, C33	Cap., X5R 1μF, 50V, 10%, 1206	MURATA, GRM188R61H105KAAL
11	1	C18	Cap., X5R 1μF, 25V, 10%, 0603	AVX, 06033D105KAT2A
12	1	C19	Cap., Polymer, 15uF, 25V	Panasonic, 25TQC15MYFB
13	1	C21	Cap., X7S 2.2μF, 100V, 10%, 1206	TDK, C3216X7S2A225M
14	2	C24, C31	Cap., X7R 2.2μF, 25V, 20%, 0805	AVX, 08053C225MAT2A
15	2	C5, C14	Cap., X5R 4.7μF, 50V, 10%, 1206	TAIYO YUDEN, UMK316BJ475KL-T
16	4	D1, D4, D5, D8	Diode Schottky, SOD-323	DIODES/ZETEX, BAT760-7
17	4	D2, D11, D12, D13	Diode Schottky 8Amp 100V	VISHAY, V8P10-M3
18	1	D16	Volt. Reg. Diode 12V, SOD-323	NXP SEMI., PDZ12B
19	1	D15	Diode Schottky 1A 60V	DIODES INC. PD3S160-7
20	1	D14	Diode Zener 7.5V	NXP/ PHILIPS PDZ7.5B
21	1	D17	Diode, 100V, SOD523	NXP/ PHILIPS BAS516
22	4	Q3, Q4, Q7, Q8	NPN/PNP Transistor	NXP SEMI., PBSS4140DPN
22	4	Q2, Q6, Q10, Q14	MOSFET 75V	INFINEON, BSC036NE7NS3G
23	1	Q16	MOSFET, 60V	FAIRCHILD, FDC5612
24	1	Q17	Transistor, SOT223	NXP SEMI., PZTA42

dc2006aafa

PARTS LIST

ITEM	QTY	REFERENCE	PART DESCRIPTION	MANUFACTURER/PART NUMBER
25	1	Q12	Transistor, SOT-23	DIODES, MMBTA42-7-F
26	4	L1, L2, L3, L4	INDUCTOR, 10µH	COILCRAFT, SER2918H-103KL
27	1	T2	Dual Winding Inductor, 100µH	COOPER BUSSMANN, DRQ73-101-R
28	8	R37, R13, R14, R35, R47, R21, R22, R39	Res., Chip 0Ω, Jumper 0603	VISHAY, CRCW06030000Z0EA
29	4	RS2, RS3, RS6, RS8	Res., 0.004Ω, 1/2W, 1%, 2010	VISHAY, WSL20104L000FEA
30	2	R1, R17	Res., Chip 84.5k, 1%, 0805	VISHAY, CRCW080584K5FKEA
31	4	R2, R12, R20, R29	Res., Chip 10Ω, 5%, 0603	VISHAY, CRCW060310R0JNEA
32	1	R45	Res., Chip 402Ω, 1%, 0603	VISHAY, CRCW0603402RFKEA
33	3	R5, R19, R9	Res., Chip 21k, 1%, 0603	VISHAY, CRCW060321K0FKEA
34	3	R7, R24	Res., Chip 66.5k, 1%, 0603	VISHAY, CRCW060366K5FKEA
35	2	R10, R27	Res., Chip 11.8k, 1%, 0603	VISHAY, CRCW060311K8FKEA
36	2	R11, R28	Res., Chip 475k, 1%, 1206	VISHAY, CRCW1206475KFKEA
37	1	R34	Res., Chip 100k, 1%, 0603	VISHAY, CRCW0603100KFKEA
38	1	R18	SMT JUMPER LINK	HARWIN, S1911-46
38	2	R46, R31	Res., Chip 10k, 1%, 0603	VISHAY, CRCW060310K0FKEA
39	1	R32	Res., Chip 0.1Ω, 1%, 0603	VISHAY, WSL0603R1000FEA
40	1	R50	Res., Chip 8.66k, 1%, 0603	VISHAY, CRCW06038K66FKEA
41	1	R23	Res., Chip 1M, 1%, 0603	VISHAY, CRCW06031M00FKEA
42	1	R44	Res., Chip 12.1k, 1%, 0603	VISHAY, CRCW060312K1FKEA
43	1	R3	Res., Chip 3.32k, 1%, 1206	VISHAY, CRCW12063K32FKEA
44	1	R41	Res., Chip 10k, 1%, 1206	VISHAY, CRCW120610K0FKEA
45	1	R40	Res., Chip 115k, 1%, 0603	VISHAY, CRCW0603115K0FKEA
46	1	R38	Res., Chip 3.01k, 1%, 0603	VISHAY, CRCW06033K01FKEA
47	2	U1, U2	IC., LTC3862EUH-2#PBF, 5mm × 5 mm, QFN	LINEAR TECH, LTC3862EUH-2#PBF
48	1	U3	IC., LTC3805-5	LINEAR TECH, LTC3805EMSE-5#TRMPBF
45	1	R44	Res., Chip 12.1k, 1%, 0603	VISHAY, CRCW060312K1FKEA
46	1	R3	Res., Chip 3.32k, 1%, 1206	VISHAY, CRCW12063K32FKEA
47	1	R41	Res., Chip 10k, 1%, 1206	VISHAY, CRCW120610K0FKEA
48	1	R40	Res., Chip 115k, 1%, 0603	VISHAY, CRCW0603115K0FKEA

Additional Demo Board Circuit Components

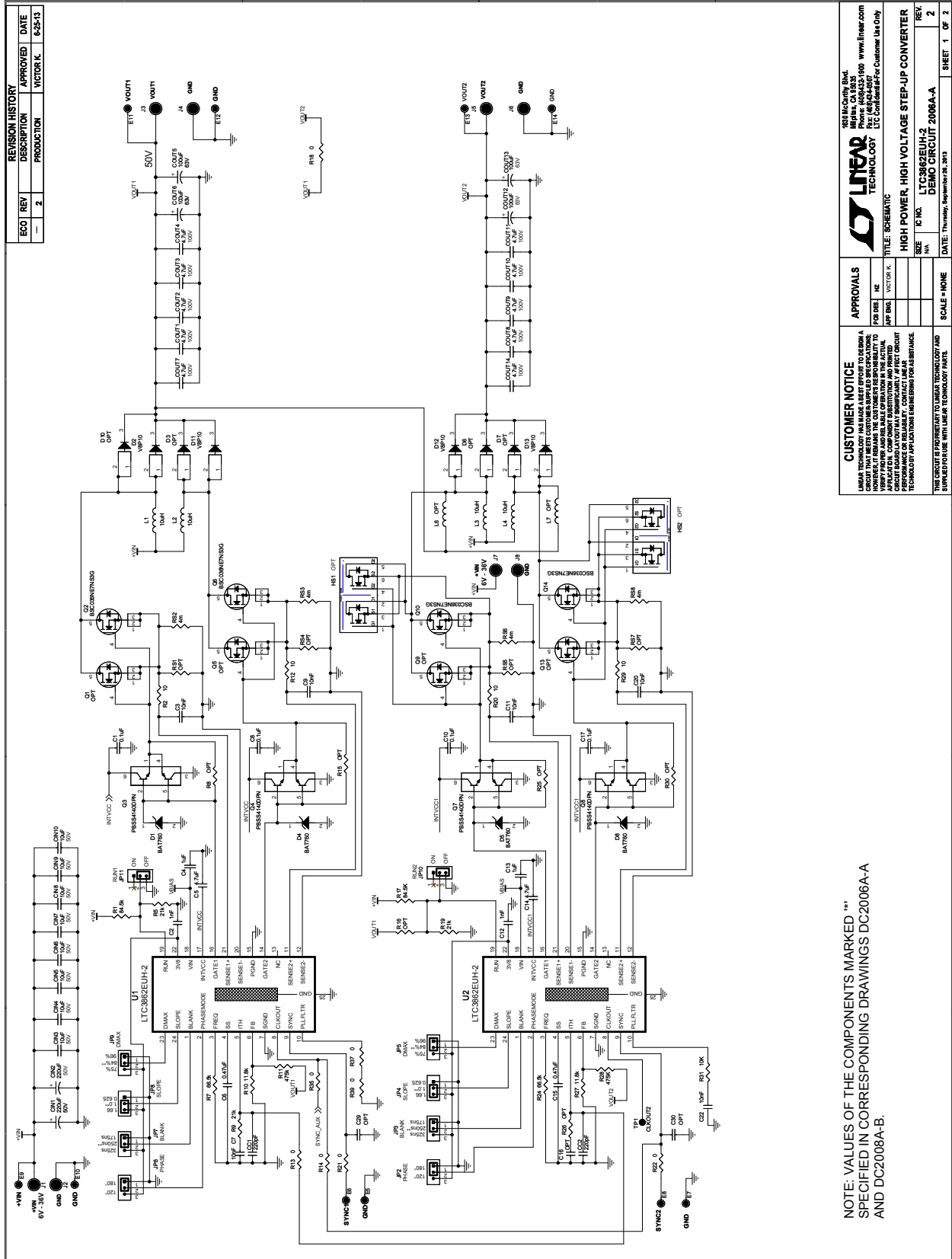
1		R4, R8, R15, R25, R26, R30, R42		OPT
2		C16, C29, C30		OPT
2		D3, D6, D7, D10		OPT
3		Q1, Q5, Q9, Q13		OPT

Hardware

1	10	E1-E10	TESTPOINT, TURRET, .094"	MILL-MAX, 2501-2-00-80-00-00-07-0
2	4	J1, J2, J3, J4	CONN, BANANA JACK, KEYSTONE-575-4	KEYSTONE 575-4
3	1	JP1	JMP, 3 PIN, 1 ROW, 0.079"	SULLINS, NRPNO31PAEN-RC
4	1	JP2	JMP, 3 PIN, 2 ROW, 0.079"	SULLINS, NRPNO32PAEN-RC
5	4	MTGS at 4 Corners	STANDOFF, NYLON .5 1/2"	KEYSTONE, 8833(SNAP-ON)
6	2	XJP1, XJP2	SHUNT, .079" CENTER	SAMTEC, 2SN-BK-G
7	4	J1-J4	Broaching Studs, .625x0.250	PennEngineering, KFH-032-10ET
8	4	J1-J4	Nut Brass, # 10-32 M/S BR PL	ANY 10-32
9	4	J1-J4	Ring, Lug # 10	KEYSTONE, 8205
10	4	J1-J4	Washer #10, Tin Plated Brass	ANY #10EXT BZ TN

DEMO MANUAL DC2006A-A

SCHEMATIC DIAGRAM



REVISION HISTORY			
ECO	REV	DESCRIPTION	APPROVED DATE
-	2	PRODUCTION	VICTOR K. 8-25-13

APPROVALS		TITLE	
FOR DES	IC	HIGH POWER, HIGH VOLTAGE STEP-UP CONVERTER	
APR DES	VICTOR K.	SEE	IC NO.
		WA	LTC3862EUH-2
		SCALE	DEMO CIRCUIT 2006A-A
		DATE	Thursday, September 26, 2013
		SHEET	1 OF 2

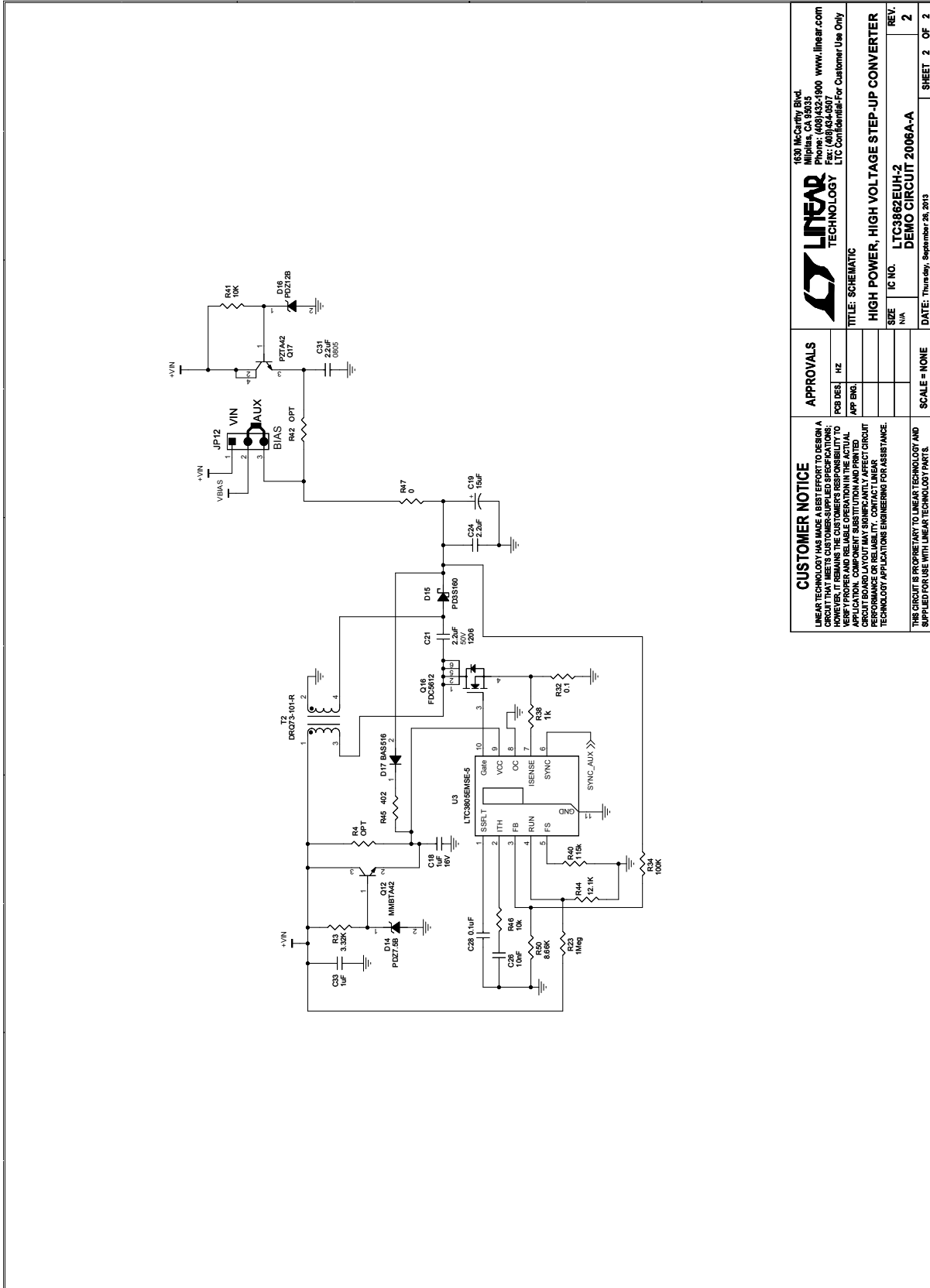
CUSTOMER NOTICE
 THIS CIRCUIT IS PROPRIETARY TO LINEAR TECHNOLOGY AND IS NOT TO BE REPRODUCED OR TRANSMITTED IN ANY FORM OR BY ANY MEANS, ELECTRONIC OR MECHANICAL, INCLUDING PHOTOCOPYING, RECORDING, OR BY ANY INFORMATION STORAGE AND RETRIEVAL SYSTEM. LINEAR TECHNOLOGY ASSUMES NO LIABILITY FOR ANY DAMAGES, INCLUDING CONSEQUENTIAL DAMAGES, ARISING FROM THE USE OF THIS CIRCUIT. FOR FURTHER INFORMATION, CONTACT LINEAR TECHNOLOGY APPLICATIONS ENGINEERS FOR ASSISTANCE.

NOTE: VALUES OF THE COMPONENTS MARKED ** SPECIFIED IN CORRESPONDING DRAWINGS DC2006A-A AND DC2008A-B.

LINEAR TECHNOLOGY

Figure 4. DC2006A-A Four-Phase Boost Converter

SCHEMATIC DIAGRAM



<p>CUSTOMER NOTICE LINEAR TECHNOLOGY HAS MADE A BEST EFFORT TO DESIGN A CIRCUIT THAT MEETS CUSTOMER-SUPPLIED SPECIFICATIONS. HOWEVER, IT REMAINS THE CUSTOMER'S RESPONSIBILITY TO VERIFY PROPER AND RELIABLE OPERATION IN THE ACTUAL APPLICATION. PERFORMANCE VARIATIONS DUE TO PCB LAYOUT, BOARD LAYOUT, CONTACT QUALITY, CONTACT RELIABILITY, CONTACT LINEAR TECHNOLOGY APPLICATIONS ENGINEERING FOR ASSISTANCE.</p>		<p>APPROVALS</p> <p>PCB DES: _____ HZ</p> <p>APP ENG: _____</p>	
<p>CUSTOMER NOTICE THIS CIRCUIT IS PROPRIETARY TO LINEAR TECHNOLOGY AND SUPPLIED FOR USE WITH LINEAR TECHNOLOGY PART S.</p>		<p>SCALE = NONE</p>	
<p>LINEAR TECHNOLOGY 1639 McCarthy Blvd. Milpitas, CA 95035 Phone: (408) 255-0000 Fax: (408) 644-6507 L7C Confidential-For Customer Use Only</p>		<p>REV.: 2</p>	
<p>TITLE: SCHEMATIC</p>		<p>IC NO.: LTC3862EUH-2</p>	
<p>SIZE: N/A</p>		<p>DATE: Thursday, September 28, 2013</p>	
<p>DATE: Thursday, September 28, 2013</p>		<p>SHEET: 2 OF 2</p>	

Figure 5. DC2006A-A Bias Circuitry

DEMO MANUAL DC2006A-A

DEMONSTRATION BOARD IMPORTANT NOTICE

Linear Technology Corporation (LTC) provides the enclosed product(s) under the following **AS IS** conditions:

This demonstration board (DEMO BOARD) kit being sold or provided by Linear Technology is intended for use for **ENGINEERING DEVELOPMENT OR EVALUATION PURPOSES ONLY** and is not provided by LTC for commercial use. As such, the DEMO BOARD herein may not be complete in terms of required design-, marketing-, and/or manufacturing-related protective considerations, including but not limited to product safety measures typically found in finished commercial goods. As a prototype, this product does not fall within the scope of the European Union directive on electromagnetic compatibility and therefore may or may not meet the technical requirements of the directive, or other regulations.

If this evaluation kit does not meet the specifications recited in the DEMO BOARD manual the kit may be returned within 30 days from the date of delivery for a full refund. **THE FOREGOING WARRANTY IS THE EXCLUSIVE WARRANTY MADE BY THE SELLER TO BUYER AND IS IN LIEU OF ALL OTHER WARRANTIES, EXPRESSED, IMPLIED, OR STATUTORY, INCLUDING ANY WARRANTY OF MERCHANTABILITY OR FITNESS FOR ANY PARTICULAR PURPOSE. EXCEPT TO THE EXTENT OF THIS INDEMNITY, NEITHER PARTY SHALL BE LIABLE TO THE OTHER FOR ANY INDIRECT, SPECIAL, INCIDENTAL, OR CONSEQUENTIAL DAMAGES.**

The user assumes all responsibility and liability for proper and safe handling of the goods. Further, the user releases LTC from all claims arising from the handling or use of the goods. Due to the open construction of the product, it is the user's responsibility to take any and all appropriate precautions with regard to electrostatic discharge. Also be aware that the products herein may not be regulatory compliant or agency certified (FCC, UL, CE, etc.).

No License is granted under any patent right or other intellectual property whatsoever. **LTC assumes no liability for applications assistance, customer product design, software performance, or infringement of patents or any other intellectual property rights of any kind.**

LTC currently services a variety of customers for products around the world, and therefore this transaction **is not exclusive**.

Please read the DEMO BOARD manual prior to handling the product. Persons handling this product must have electronics training and observe good laboratory practice standards. **Common sense is encouraged.**

This notice contains important safety information about temperatures and voltages. For further safety concerns, please contact a LTC application engineer.

Mailing Address:

Linear Technology
1630 McCarthy Blvd.
Milpitas, CA 95035

Copyright © 2004, Linear Technology Corporation

X-ON Electronics

Largest Supplier of Electrical and Electronic Components

Click to view similar products for [Power Management IC Development Tools](#) category:

Click to view products by [Analog Devices](#) manufacturer:

Other Similar products are found below :

[EVAL-ADM1168LQEBZ](#) [EVB-EP5348UI](#) [MIC23451-AAAYFL EV](#) [MIC5281YMME EV](#) [DA9063-EVAL](#) [ADP122-3.3-EVALZ](#) [ADP130-0.8-EVALZ](#) [ADP130-1.2-EVALZ](#) [ADP130-1.5-EVALZ](#) [ADP130-1.8-EVALZ](#) [ADP1714-3.3-EVALZ](#) [ADP1716-2.5-EVALZ](#) [ADP1740-1.5-EVALZ](#) [ADP1752-1.5-EVALZ](#) [ADP1828LC-EVALZ](#) [ADP1870-0.3-EVALZ](#) [ADP1871-0.6-EVALZ](#) [ADP1873-0.6-EVALZ](#) [ADP1874-0.3-EVALZ](#) [ADP1882-1.0-EVALZ](#) [ADP199CB-EVALZ](#) [ADP2102-1.25-EVALZ](#) [ADP2102-1.875EVALZ](#) [ADP2102-1.8-EVALZ](#) [ADP2102-2-EVALZ](#) [ADP2102-3-EVALZ](#) [ADP2102-4-EVALZ](#) [ADP2106-1.8-EVALZ](#) [ADP2147CB-110EVALZ](#) [AS3606-DB](#) [BQ24010EVM](#) [BQ24075TEVM](#) [BQ24155EVM](#) [BQ24157EVM-697](#) [BQ24160EVM-742](#) [BQ24296MEVM-655](#) [BQ25010EVM](#) [BQ3055EVM](#) [NCV891330PD50GEVB](#) [ISLUSBI2CKIT1Z](#) [LM2744EVAL](#) [LM2854EVAL](#) [LM3658SD-AEV/NOPB](#) [LM3658SDEV/NOPB](#) [LM3691TL-1.8EV/NOPB](#) [LM4510SDEV/NOPB](#) [LM5033SD-EVAL](#) [LP38512TS-1.8EV](#) [EVAL-ADM1186-1MBZ](#) [EVAL-ADM1186-2MBZ](#)