

LTC3649, 60V, Low I_Q Monolithic High Efficiency Step-Down Regulator

DESCRIPTION

Demonstration circuit 2113A is a high input voltage, high efficiency synchronous monolithic buck converter featuring the LTC[®]3649. The DC2113A has wide input voltage range from 3.1V up to 60V. The output voltage of the DC2113A can be set as to 3.3V or 5V. However, “USER SELECT” option of DC2113A allows output voltage to be as high as input voltage minus 0.5V, with certain modifications. DC2113A is capable of delivering up to 4A of output current. DC2113A supports three operation modes: Fixed-Frequency modulation, Burst Mode[®] operation and the user can synchronize it with external clock also. Fixed-Frequency mode of operation maximizes the output current, reduces output voltage ripple, and yields a low noise switching spectrum. Burst Mode operation employs a variable frequency switching algorithm that minimizes the no-load input quiescent current and improves efficiency at light loads.

The DC2113A consumes less than 15 μ A of quiescent current during shutdown and it consumes less than 440 μ A at no load conditions in Burst Mode operation. The DC2113A has a standard operating frequency of 500kHz, but can be adjusted in a range between 300kHz and as high as 3MHz. DC2113A is a monolithic step-down converter, LTC3649 integrates top and bottom N-channel MOSFETs, significantly reducing circuit footprint. DC2113A was designed to support multiple footprints of input/output capacitors and inductor to accommodate variety of applications. The data sheet of LTC3649 gives a complete description functionality of this regulator; also contains operation and application information and must be read in conjunction with this demo board manual for DC2113A.

Design files for this circuit board are available at <http://www.linear.com/demo/DC2113A>

LT, LT, LTC, LTM, Burst Mode, Linear Technology and the Linear logo are registered trademarks of Linear Technology Corporation. All other trademarks are the property of their respective owners.

PERFORMANCE SUMMARY Specifications are at T_A = 25°C

PARAMETER	CONDITIONS	VALUE
Minimum Input Voltage		4V
Maximum Input Voltage		60V
Output Voltage V _{OUT} Regulation	V _{IN} = 4V – 60V	5V \pm 2% or 3.3V \pm 2%
Maximum Continuous Output Current	V _{OUT}	4A
Preset Operating Frequency	R10 = 200k Ω	500kHz
External Clock Sync. Frequency Range		300kHz – 3MHz
Efficiency	V _{IN} = 12V, V _{OUT} = 5V, I _{OUT} = 4A V _{IN} = 12V, V _{OUT} = 3.3V, I _{OUT} = 4A	97% 97%
Typical Output Ripple V _{OUT}	V _{IN} = 12V, V _{OUT} = 5V, I _{OUT} = 4A (20MHz BW)	<15mV _{P-P}
Quiescent Current at Shutdown	V _{IN} = 4V – 60V	<14 μ A
Input Current at No Load	V _{IN} = 4V – 60V, Burst Mode Operation	<430 μ A

QUICK START PROCEDURE

Demonstration circuit 2113A is easy to set up to evaluate the performance of the LTC3649. For proper measurement equipment configuration, set up the circuit according to the diagram in Figure 1. Before proceeding to test, insert shunt into JP2 (RUN) into OFF position, which connects the RUN pin to ground (GND), and thus, shut down the output. Set jumper JP1 (MODE) into FCC (forced counties conduction mode) position. Set jumper JP3 (V_{OUT}) into 5.0V position.

NOTE: When measuring the input or output voltage ripple, care must be taken to avoid a long ground lead on the oscilloscope probe. Measure the input or output voltage ripple by touching the probe tip directly across the V_{IN} or V_{OUT} and GND terminals. See Figure 2 for proper scope probe technique.

1. With the DC2113A set up according to the proper measurement and equipment in Figure 1, apply 12V at V_{IN}. Measure V_{OUT}; it should read 0V. If desired, one can measure the shutdown supply current at this point. The supply current will be approximately 14μA, or less, in shutdown.

2. Turn on V_{OUT} of the circuit by inserting the shunt in header JP2 (RUN) into the ON position. The output voltage should be regulating. Measure V_{OUT} – it should measure 5.0V ± 2% (**Do not apply more than the rated maximum voltage of 60V to the board or the part may be damaged**). Vary the V_{OUT} load, which should not exceed 4A. Vary the input voltage from 6V – 55V, the V_{OUT} – it should measure 5.0V ± 2%.
3. Set JP2 (RUN) into OFF and then jumper JP3 (V_{OUT}) into 3.3V position.
4. Turn on V_{OUT2} of the circuit by inserting the shunt in header JP2 (RUN) into the ON position. The output voltage should be regulating. Measure V_{OUT} – it should measure 3.3V ± 2% (**Do not apply more than the rated maximum voltage of 60V to the board or the part may be damaged**). Vary the V_{OUT} load, which should not exceed 4A. Vary the input voltage from 16V – 55V, the V_{OUT} – it should measure 3.3V ± 2%
5. Set output current to zero and move jumper JP1 (MODE) into BURST position and measure V_{OUT} for 3.3V.
6. Set output current to zero and move jumper JP1 (MODE) into BURST position and measure V_{OUT} for 5.0V.

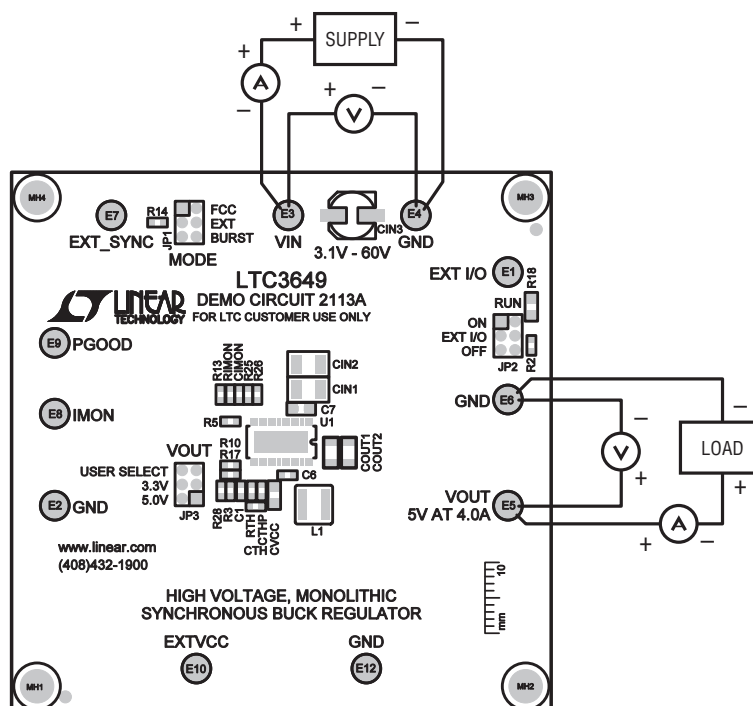


Figure 1. Proper Measurement Equipment Setup

QUICK START PROCEDURE

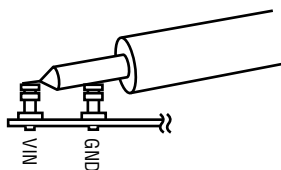
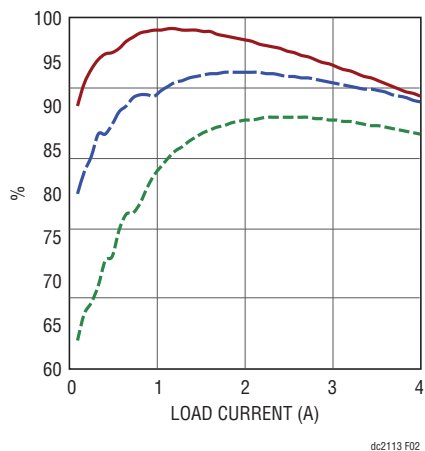


Figure 2. Measuring Input or Output Ripple



dc2113 FD2

Figure 3. Efficiency vs Input Voltage and Load Current, V_{OUT} 5V, Burst Mode Operation

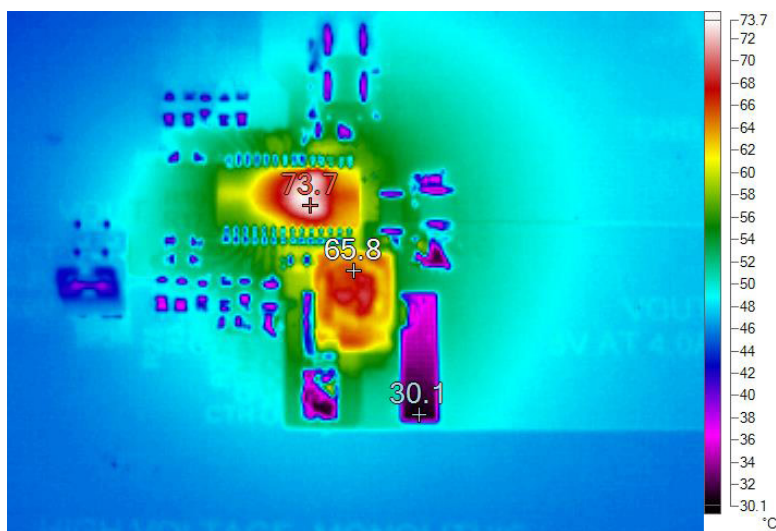


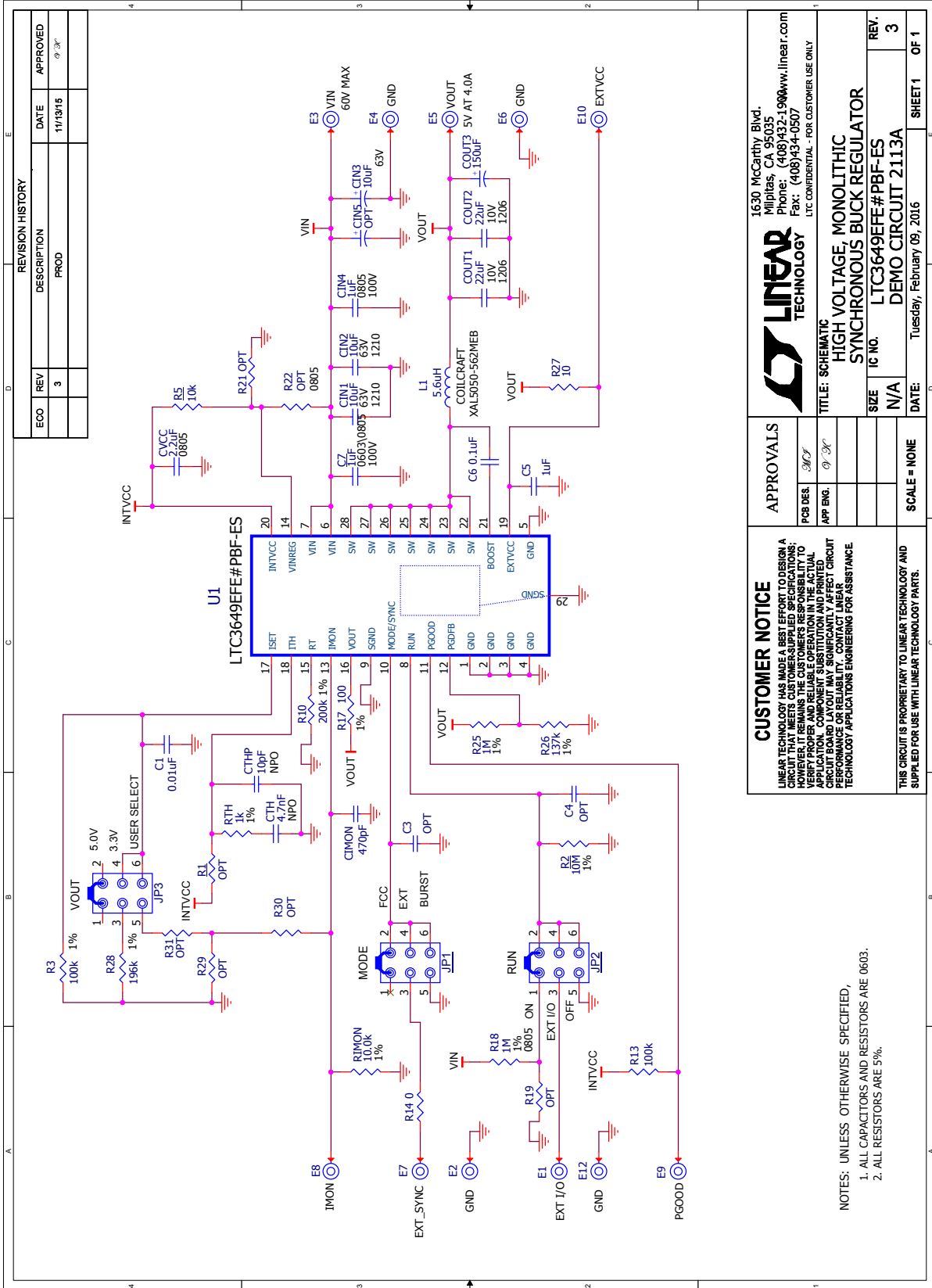
Figure 4. Thermal Map, V_{IN} 60V, I_{OUT1} 5V at 4.0A. No Air Flow

DEMO MANUAL DC2113A

PARTS LIST

ITEM	QTY	REFERENCE	PART DESCRIPTION	MANUFACTURER/PART NUMBER
Required Circuit Components				
1	2	CIN1, CIN2	CAP, 1210 10 μ F 10% 63V X7R	MURATA GRM32ER71J106KA12L
2	1	CIN3	CAP, 10 μ F 20% 63V ELEC	SUN ELECT. 63CE10KX
3	2	CIN4, C7	CAP, 0805 1 μ F 10% 100V X7S	TDK C2012X7S2A105K
4	2	COUT1, COUT2	CAP, 1210 22 μ F 10% 25V X7R	MURATA GRM32ER71E226KE15L
5	1	COUT3	CAP, 3528 150 μ F 20% 6.3V POSCAP	PANASONIC 6TPE150MAZB
6	1	CTH	CAP, 0603 4700pF 10% 25V X7R	AVX 06033C472KAT2A
7	1	CTHP	CAP, 0603 10pF 5% 25V C0G	AVX 06033A100JAT2A
8	1	CVCC	CAP, 0805 2.2 μ F 10% 16V X7R	AVX 0805YC225KAT2A
9	1	C1	CAP, 0603 0.01 μ F 10% 50V X7R	AVX 06035C103KAT4A
10	1	C5	CAP, 0603 1 μ F 10% 16V X5R	AVX 0603YD105KAT2A
11	1	C6	CAP, 0603 0.1 μ F 10% 50V X7R	AVX 06035C104KAT2A
12	1	L1	IND, 5.6 μ H	COILCRAFT XAL5050-562MEB
13	1	RIMON	RES, 0603 10.0k Ω 1% 1/10W	VISHAY CRCW060310K0FKEA
14	1	RTH	RES, 0603 1.0k Ω 1% 1/10W	VISHAY CRCW06031K00FKEA
15	1	R2	RES, 0603 10M Ω 1% 1/10W	VISHAY CRCW060310M0FKEA
16	1	R3	RES, 0603 100k Ω 1% 1/10W	VISHAY CRCW0603100KFKEA
17	1	R5	RES, 0603 10k Ω 5% 1/10W	VISHAY CRCW060310K0JNEA
18	1	R10	RES, 0603 340k Ω 1% 1/10W	VISHAY CRCW0603340KFKEA
19	1	R13	RES, 0603 100k Ω 5% 1/10W	VISHAY CRCW0603100KJNEA
20	1	R14	RES, 0603 0 Ω JUMPER	VISHAY CRCW06030000Z0EA
	1	R17	RES, 0603 100 Ω 1% 1/10W	VISHAY CRCW0603100RFKEA
21	1	R18	RES, 0805 1M Ω 1% 1/8W	VISHAY CRCW08051M00FKEA
22	1	R25	RES, 0603 1M Ω 1% 1/10W	VISHAY CRCW06031M00FKEA
	1	R27	RES, 0603 10 Ω 1% 0.1W	VISHAY CRCW060310R0FKEA
23	1	R26	RES, 0603 137k Ω 1% 0.063W	VISHAY CRCW0603137KFKEA
24	1	R28	RES, 0603 196k Ω 1% 1/10W	VISHAY CRCW0603196KFKEA
25	1	U1	IC, SYNCHRONOUS BUCK REGULATOR	LINEAR TECH. LTC3649EFE28#PBF-ES
Additional Demo Board Circuit Components				
		R1, R19, R21, R29, R30, R31	RES, 0603 OPTION	OPTION
		R22	RES, 0805 OPTION	VISHAY CRCW08051M00FKEA
		C3,C4	CAP, 0603 OPTION	OPTION
		CIN5	CAP, OPTION	OPTION
Hardware				
	11	E1, E2, E3, E4, E5, E6, E7, E8 E9, E10, E12	TURRET	MILL MAX 2501-2-00-80-00-00-07-0
	3	JP1, JP2, JP3	HEADER, 3-PIN, DBL ROW 2mm	SULLINS, NRPN032PAEN
	4	MH1, MH2, MH3, MH4	STANDOFF, SNAP ON	KEYSTONE 8833
	3	XJP1, XJP2, XJP3	SHUNT	SAMTEC 2SN-BK-G

SCHEMATIC DIAGRAM



DEMO MANUAL DC2113A

DEMONSTRATION BOARD IMPORTANT NOTICE

Linear Technology Corporation (LTC) provides the enclosed product(s) under the following **AS IS** conditions:

This demonstration board (DEMO BOARD) kit being sold or provided by Linear Technology is intended for use for **ENGINEERING DEVELOPMENT OR EVALUATION PURPOSES ONLY** and is not provided by LTC for commercial use. As such, the DEMO BOARD herein may not be complete in terms of required design-, marketing-, and/or manufacturing-related protective considerations, including but not limited to product safety measures typically found in finished commercial goods. As a prototype, this product does not fall within the scope of the European Union directive on electromagnetic compatibility and therefore may or may not meet the technical requirements of the directive, or other regulations.

If this evaluation kit does not meet the specifications recited in the DEMO BOARD manual the kit may be returned within 30 days from the date of delivery for a full refund. **THE FOREGOING WARRANTY IS THE EXCLUSIVE WARRANTY MADE BY THE SELLER TO BUYER AND IS IN LIEU OF ALL OTHER WARRANTIES, EXPRESSED, IMPLIED, OR STATUTORY, INCLUDING ANY WARRANTY OF MERCHANTABILITY OR FITNESS FOR ANY PARTICULAR PURPOSE. EXCEPT TO THE EXTENT OF THIS INDEMNITY, NEITHER PARTY SHALL BE LIABLE TO THE OTHER FOR ANY INDIRECT, SPECIAL, INCIDENTAL, OR CONSEQUENTIAL DAMAGES.**

The user assumes all responsibility and liability for proper and safe handling of the goods. Further, the user releases LTC from all claims arising from the handling or use of the goods. Due to the open construction of the product, it is the user's responsibility to take any and all appropriate precautions with regard to electrostatic discharge. Also be aware that the products herein may not be regulatory compliant or agency certified (FCC, UL, CE, etc.).

No License is granted under any patent right or other intellectual property whatsoever. **LTC assumes no liability for applications assistance, customer product design, software performance, or infringement of patents or any other intellectual property rights of any kind.**

LTC currently services a variety of customers for products around the world, and therefore this transaction **is not exclusive**.

Please read the DEMO BOARD manual prior to handling the product. Persons handling this product must have electronics training and observe good laboratory practice standards. **Common sense is encouraged.**

This notice contains important safety information about temperatures and voltages. For further safety concerns, please contact a LTC application engineer.

Mailing Address:

Linear Technology
1630 McCarthy Blvd.
Milpitas, CA 95035

Copyright © 2004, Linear Technology Corporation

X-ON Electronics

Largest Supplier of Electrical and Electronic Components

Click to view similar products for [Power Management IC Development Tools](#) category:

Click to view products by [Analog Devices](#) manufacturer:

Other Similar products are found below :

[EVAL-ADM1168LQEBZ](#) [EVB-EP5348UI](#) [MIC23451-AAAYFL EV](#) [MIC5281YMME EV](#) [DA9063-EVAL](#) [ADP122-3.3-EVALZ](#) [ADP130-0.8-EVALZ](#) [ADP130-1.2-EVALZ](#) [ADP130-1.5-EVALZ](#) [ADP130-1.8-EVALZ](#) [ADP1714-3.3-EVALZ](#) [ADP1716-2.5-EVALZ](#) [ADP1740-1.5-EVALZ](#) [ADP1752-1.5-EVALZ](#) [ADP1828LC-EVALZ](#) [ADP1870-0.3-EVALZ](#) [ADP1871-0.6-EVALZ](#) [ADP1873-0.6-EVALZ](#) [ADP1874-0.3-EVALZ](#) [ADP1882-1.0-EVALZ](#) [ADP199CB-EVALZ](#) [ADP2102-1.25-EVALZ](#) [ADP2102-1.875EVALZ](#) [ADP2102-1.8-EVALZ](#) [ADP2102-2-EVALZ](#) [ADP2102-3-EVALZ](#) [ADP2102-4-EVALZ](#) [ADP2106-1.8-EVALZ](#) [ADP2147CB-110EVALZ](#) [AS3606-DB](#) [BQ24010EVM](#) [BQ24075TEVM](#) [BQ24155EVM](#) [BQ24157EVM-697](#) [BQ24160EVM-742](#) [BQ24296MEVM-655](#) [BQ25010EVM](#) [BQ3055EVM](#) [NCV891330PD50GEVB](#) [ISLUSBI2CKIT1Z](#) [LM2744EVAL](#) [LM2854EVAL](#) [LM3658SD-AEV/NOPB](#) [LM3658SDEV/NOPB](#) [LM3691TL-1.8EV/NOPB](#) [LM4510SDEV/NOPB](#) [LM5033SD-EVAL](#) [LP38512TS-1.8EV](#) [EVAL-ADM1186-1MBZ](#) [EVAL-ADM1186-2MBZ](#)