

# Small Highly-Integrated Highly-Efficient Non-Isolated PoE Powered Device

## DESCRIPTION

Demonstration circuit 2125 is a small, highly-integrated, non-isolated PoE Powered Device (PD) solution. It features a PD Interface Controller (LT<sup>®</sup>4275), which interfaces with a PoE Power Sourcing Equipment (PSE), an ideal diode bridge controller (LT4321), which minimizes bridge losses, and a DC/DC  $\mu$ Module<sup>®</sup> regulator (LTM<sup>®</sup>8027).

The DC2125 is initially configured as a 38.7W LTPoE++<sup>™</sup> PD that is capable of providing 12V and 3A at the output. Users can configure the PD circuit to be an IEEE802.3

compliant Type 2 (25.5W, “at”) or Type 1 (13W, “af”) PD by changing the RCLASS and RCLASS++ resistors. See the LT4275 data sheet for further information. The output voltage of the LTM8027 can be easily configured for different output voltages as shown in the LTM8027 data sheet.

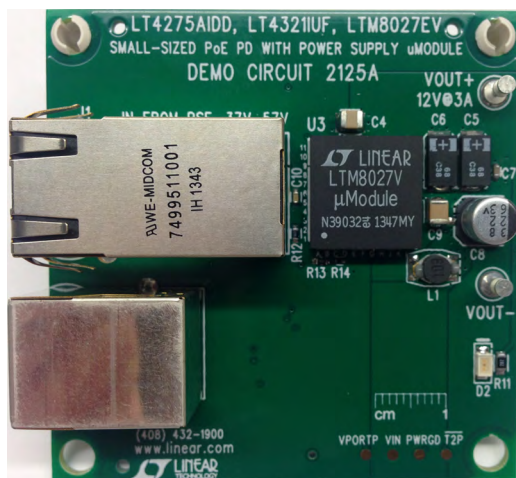
**Gerber files for this circuit board are available. Call the LTC factory.**

LT, LT, LTC, LTM, Linear Technology and the Linear logo are registered trademarks of Linear Technology Corporation. All other trademarks are the property of their respective owners.

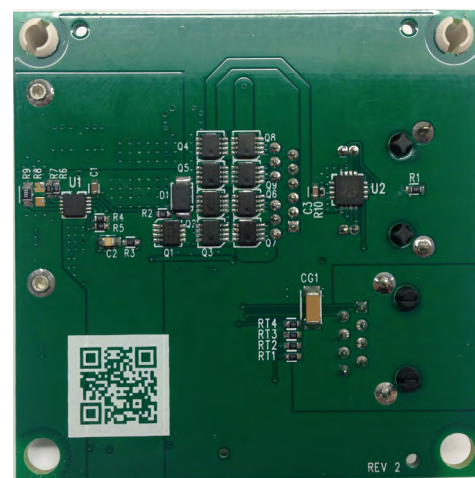
## PERFORMANCE SUMMARY Specifications are at T<sub>A</sub> = 25°C

SYMBOL	CONDITIONS	UNITS
V <sub>PORT</sub>	RJ-45 Port Voltage Range	37V to 57V
I <sub>OUT(MAX)</sub>	Maximum Current from V <sub>OUT</sub> <sup>+</sup> to V <sub>OUT</sub> <sup>-</sup>	3A
V <sub>OUT</sub>	Output Voltage	12V (typ)
$\Delta$ V <sub>OUT(RIPPLE)</sub>	Output Voltage Ripple at V <sub>PORT</sub> = 50V, I <sub>OUT</sub> = 3A	58mVpp (typ)
$\Delta$ V <sub>OUT(REG)</sub>	Output Voltage Regulation, I <sub>OUT</sub> = 0A to 3A, V <sub>PORT</sub>	±0.031% (typ)
Efficiency	Maximum Efficiency, V <sub>PORT</sub> = 41V, I <sub>OUT</sub> = 3A	90% (typ)
f <sub>SW</sub>	Switching Frequency	300kHz (typ)

## BOARD PHOTOS

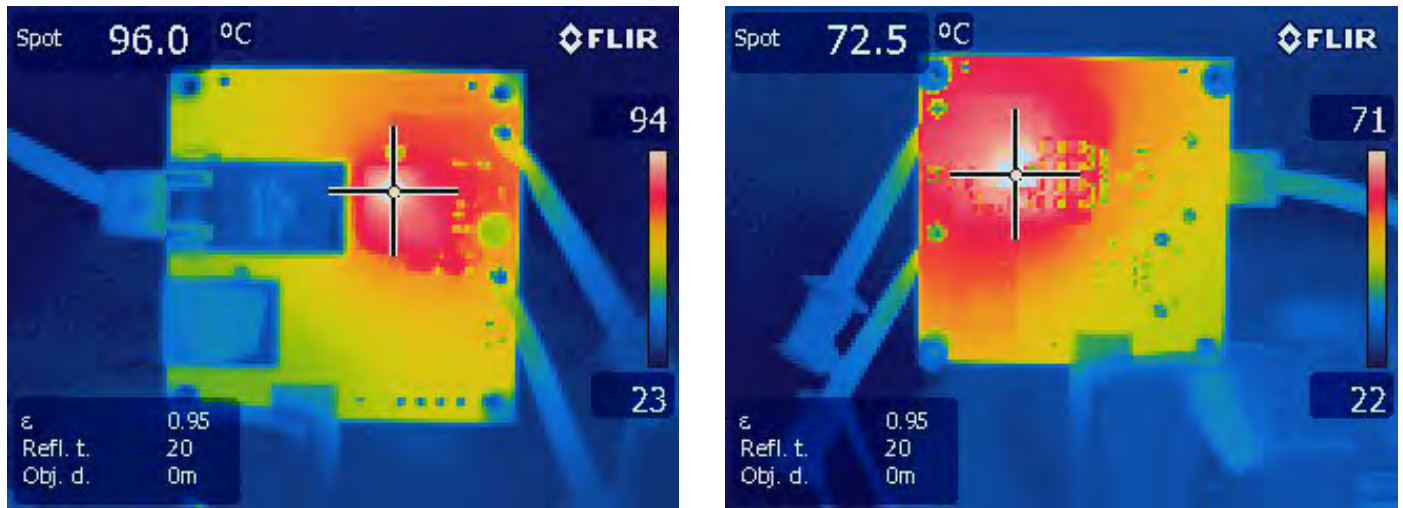


Top Side



Bottom Side

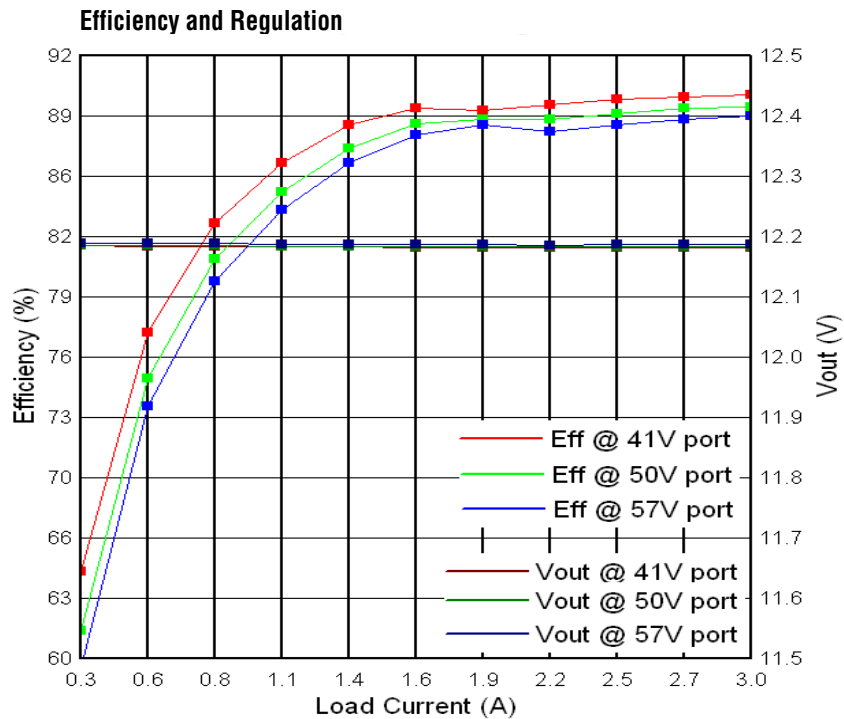
## TYPICAL PERFORMANCE CHARACTERISTICS



Top Side

Bottom Side

Figure 1. Thermal Pictures –  $V_{PORT} = 50V$ ,  $I_{OUT} = 3A$



## QUICK START PROCEDURE

NOTE: Handle the DC2125 printed circuit board by the edges.

1. Refer to Figure 2 below to evaluate the DC2125 while powering a 12V Load such as power resistors or an electronic load.
2. Connect the positive terminal of the 12V Load to the  $V_{OUT+}$  turret, E1. Connect the negative terminal of the 12V Load to the  $V_{OUT-}$  turret, E2. If using an electronic load, power it on and turn the load current down to 0A.
3. Check the power delivery capability of the LTPoE++ PSE to ensure it can power the PD and the 12V Load. Power-up the LTPoE++ PSE. NOTE: The DC1814A-A
4. Connect the output of the PSE to the input RJ45 connector, J1, of the DC2125 with a CAT5e or CAT6 Ethernet cable  $\leq 100$  meters in length.
5. After connection has been established, verify that the LED (D2) is lit. This indicates the PSE has successfully detected and powered the PD.
6. The 12V Load can now be adjusted to exercise the DC2125 over its full operating load range.

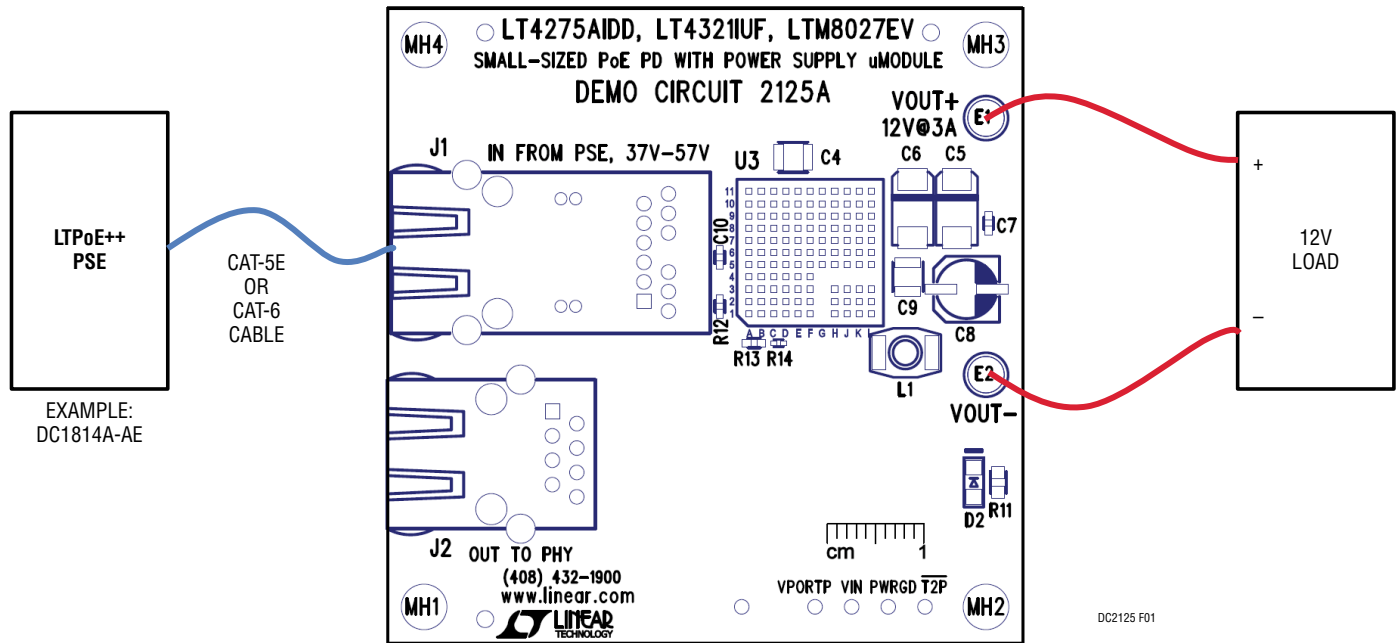


Figure 2. Setup Diagram for the DC2125 Using an LTPoE++ PSE and a Load

# DEMO MANUAL DC2125

## PARTS LIST

QTY	REFERENCE	PART DESCRIPTION	MANUFACTURER/PART NUMBER
<b>Required Circuit Components</b>			
2	C1, C3	CAP., X7S, 0.047µF 100V, 10%, 0603	TDK, C1608X7S2A473K
1	C2	CAP., X7R, 47nF 100V, 10%, 0805	AVX, 08051C473KAT2A
1	C4	CAP., X7R, 22µF 16V, 20%, 1210	AVX, 1210YC226MAT2A
2	C5, C6	CAP., TQC, 68µF 16V, 7343	PANASONIC, 16TQC68MYF
1	C7	CAP., X7R, 0.1µF 50V, 10%, 0603	MURATA, GRM188R71H104KA93D
1	C8	CAP., ALUMINUM, 22µF 63V,C-CE-BS-6.3X7.7	SUN ELECT., 63CE22BS
1	C9	CAP., X7R, 2.2µF 100V, 1210	AVX, 12101C225KAT2A
1	C10	CAP., X7R, 1500pF 100V, 5%, 0603	AVX, 06031C152JAT2A
1	D1	DIODE, 600W TRANSIENT VOLTAGE SUPPRESSOR, SOD128	NXP, PTVS58VP1UP
1	J1	CONN., MAGJACK 1PORT 1000BASE-T	WE, 7499511001
1	L1	IND, 10µH, DO1608C	COILCRAFT, DO1608C-103MLB
9	Q1-Q9	MOSFET, N-CH, LFPK33	NXP, PSMN075-100MSE
1	R2	RES., CHIP, 8.2Ω, 5%, 0603	VISHAY, CRCW06038R20JNEA
1	R3	RES., CHIP, 3.3k, 5%, 0603	VISHAY, CRCW06033K30JNEA
2	R4, R5	RES., CHIP, 100k, 5%, 0603	VISHAY, CRCW0603100KJNEA
1	R9	RES., CHIP, 34.8Ω, 1%, 0805	VISHAY, CRCW080534R8FKEA
1	R12	RES., CHIP, 56.2k, 1%, 0603	VISHAY, CRCW060356K2FKEA
1	R13	RES., CHIP, 49.9k, 1%, 0603	VISHAY, CRCW060349K9FKEA
1	U1	IC, LT4275AIDD#PBF, DFN10DD-3X3	LINEAR TECHNOLOGY CORPORATION, LT4275AIDD#PBF
1	U2	IC, LT4321IUF#PBF, QFN16UF-4X4	LINEAR TECHNOLOGY CORPORATION, LT4321IUF#PBF
1	U3	IC, µModule REGULATOR, LGA113-15X15X4.32	LINEAR TECHNOLOGY CORPORATION, LTM8027EV#PBF
<b>Optional Circuit Components</b>			
1	CG1	CAP., X7R, 1000pF, 2KV, 10% 1808	TDK, C4520X7R3D102K
1	D2	LED, GREEN	ROHM, SML-010FTT86L
1	J2	CONN., SS-7188S-A-NF	STEWART CONNECTOR, SS-7188S-A-NF
4	RT1-RT4	RES., CHIP, 75Ω, 5%, 0603	VISHAY, CRCW060375R0JNEA
3	R1, R6, R7	RES., CHIP, 0Ω, 5%, 0603	VISHAY, CRCW06030000Z0EA
0	R8	RES., 0805	OPT
1	R11	RES., CHIP, 2k, 5%, 0805	VISHAY, CRCW08052K00JNEA
2	R10, R14	RES., CHIP, 0Ω, 5%, 0402	VISHAY, CRCW04020000Z0ED
<b>Hardware: For Demo Board Only</b>			
2	E1, E2	TP, TURRET, 0.094"	MILL-MAX 2501-2-00-80-00-00-07-0
4	MH1-MH4	STANDOFF, NYLON, 0.5, 1/2"	KEYSTONE, 8833 (SNAP ON)

**SCHEMATIC DIAGRAM**

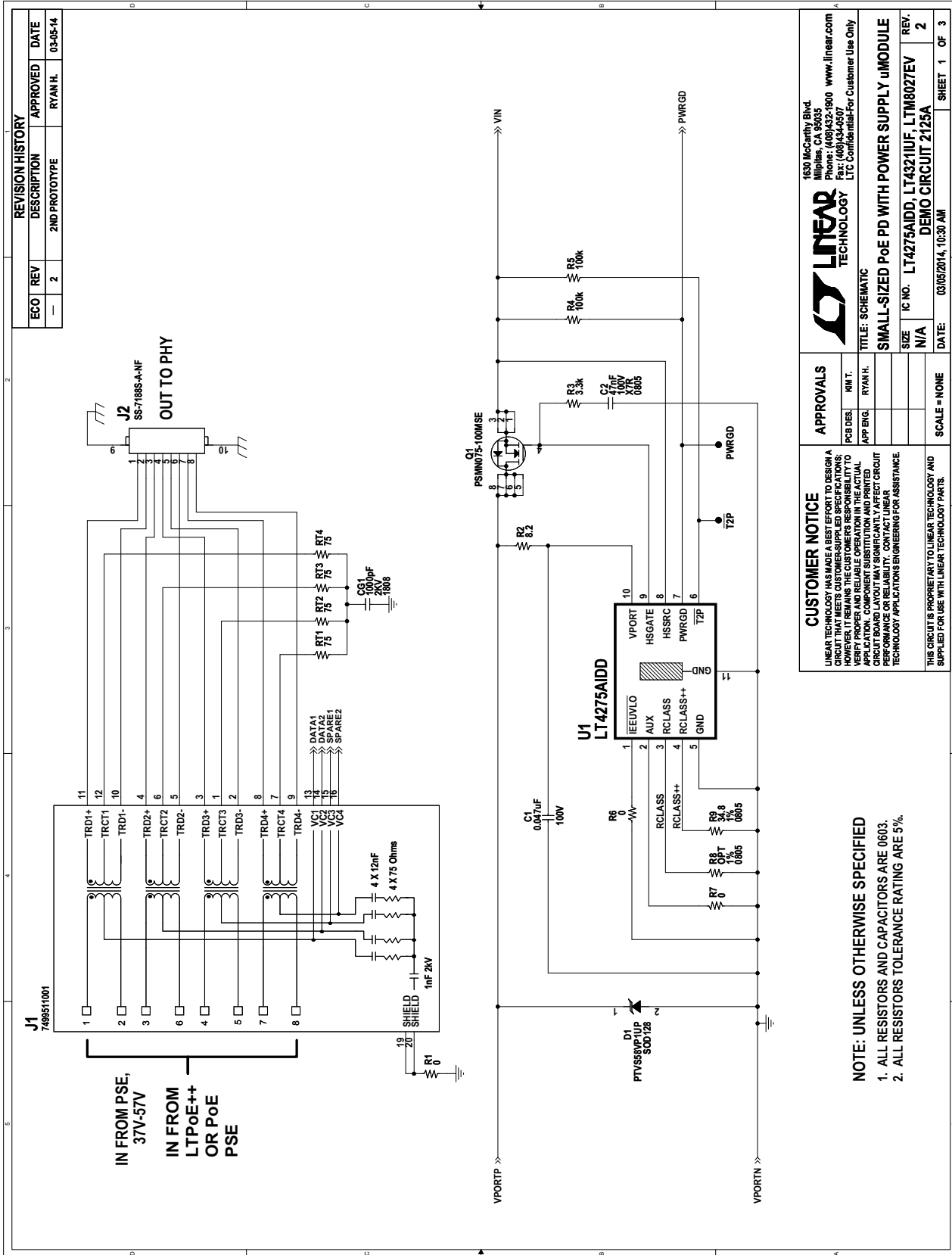
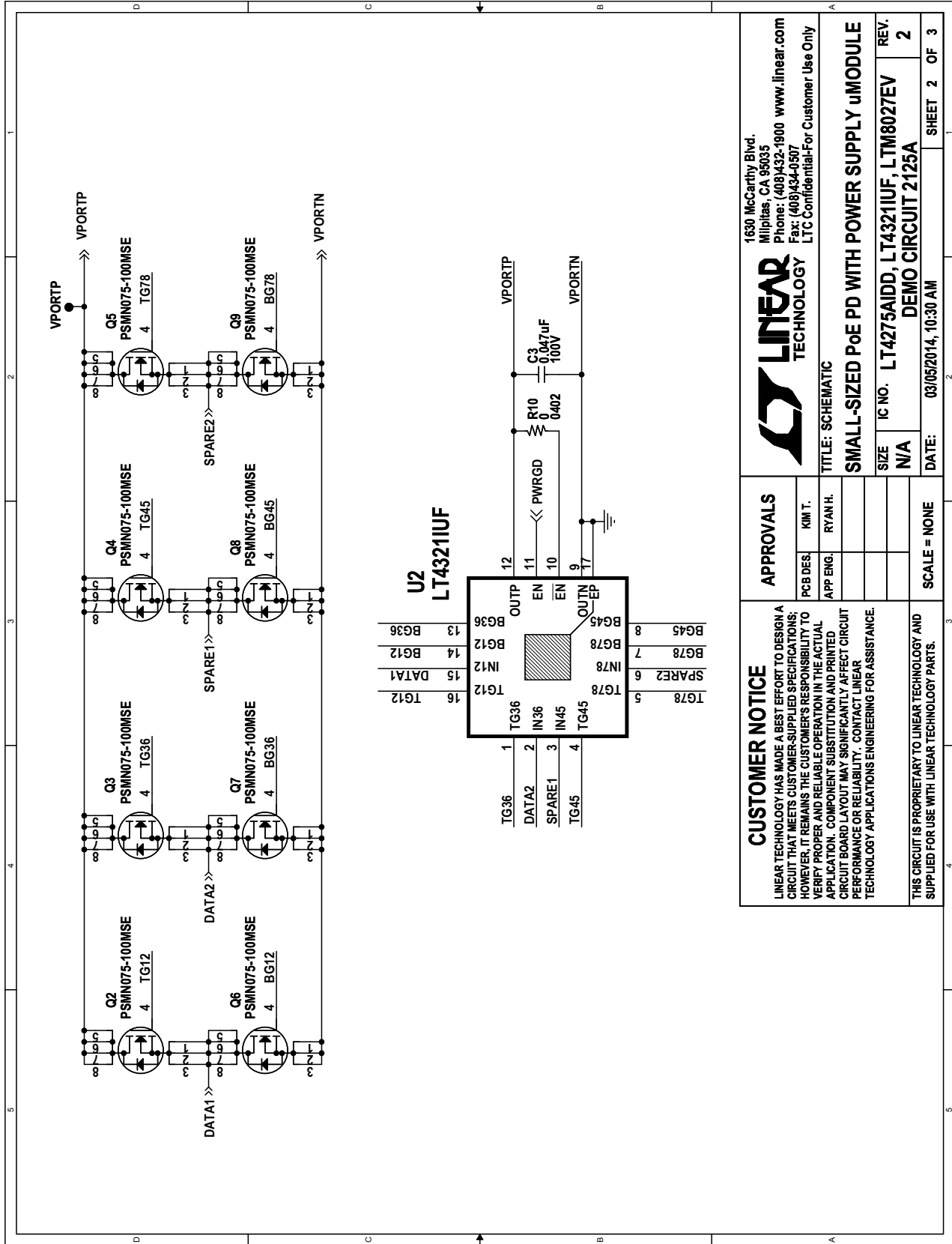


Figure 3. DC2125 Demo Circuit Schematic, Sheet 1

## SCHEMATIC DIAGRAM



**CUSTOMER NOTICE**

LINEAR TECHNOLOGY HAS MADE A BEST EFFORT TO DESIGN A CIRCUIT THAT MEETS CUSTOMER-SUPPLIED SPECIFICATIONS; HOWEVER, IT REMAINS THE CUSTOMER'S RESPONSIBILITY TO VERIFY PROPER AND RELIABLE OPERATION IN THE ACTUAL APPLICATION. COMPONENT SUBSTITUTION AND PRINTED CIRCUIT BOARD LAYOUT MAY SIGNIFICANTLY AFFECT CIRCUIT PERFORMANCE OR RELIABILITY. CONTACT LINEAR TECHNOLOGY APPLICATIONS ENGINEERING FOR ASSISTANCE.

THIS CIRCUIT IS PROPRIETARY TO LINEAR TECHNOLOGY AND SUPPLIED FOR USE WITH LINEAR TECHNOLOGY PARTS.

**APPROVALS**

PCB DES.	KIM T.
APP ENG.	RYAN H.
SCALE	NONE

**LINEAR TECHNOLOGY**

1630 McCarthy Blvd.  
Milpitas, CA 95035  
Phone: (408)432-1900 www.linear.com  
Fax: (408)434-0507  
LTC Confidential-For Customer Use Only

**TITLE: SCHEMATIC**

**SMALL-SIZED PoE PD WITH POWER SUPPLY UMODULE**

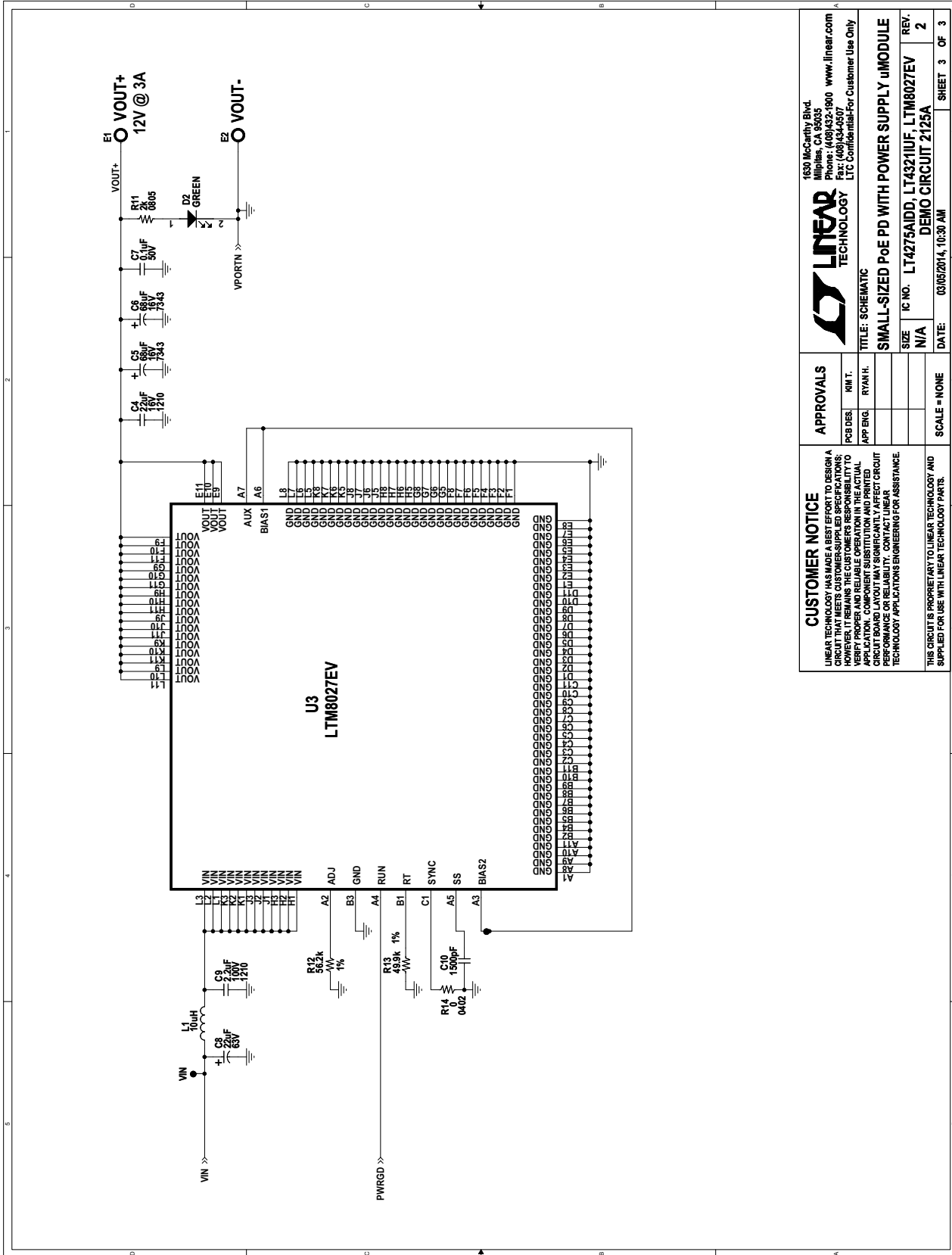
SIZE	N/A
IC NO.	LT4275AIDD, LT4321UFD, LTM8027EV
REV.	2

DATE: 03/05/2014, 10:30 AM

SHEET 2 OF 3

Figure 4. DC2125 Demo Circuit Schematic, Sheet 2

**SCHEMATIC DIAGRAM**



<p><b>CUSTOMER NOTICE</b></p> <p>LINEAR TECHNOLOGY HAS MADE A BEST EFFORT TO DESIGN A CIRCUIT THAT MEETS CUSTOMER-SUPPLIED SPECIFICATIONS; HOWEVER, IT REMAINS THE CUSTOMER'S RESPONSIBILITY TO VERIFY PROPER AND RELIABLE OPERATION IN THE ACTUAL APPLICATION. COMPONENT SUBSTITUTION AND PRINTED CIRCUIT BOARD MANUFACTURING VARIATIONS MAY AFFECT CIRCUIT PERFORMANCE OR RELIABILITY. CONTACT LINEAR TECHNOLOGY APPLICATIONS ENGINEERING FOR ASSISTANCE.</p> <p>THIS CIRCUIT IS PROPRIETARY TO LINEAR TECHNOLOGY AND SUPPLIED FOR USE WITH LINEAR TECHNOLOGY PARTS.</p>	<p><b>APPROVALS</b></p> <p>PCB DES: KIM T.</p> <p>APP ENG: RYAN H.</p>	<p>1630 McCarthy Blvd. Framingham, MA 01905 Tel: 508/875-4000 Fax: 508/875-4507 www.linear.com</p> <p><b>LINEAR TECHNOLOGY</b></p> <p>LTC Confidential-For Customer Use Only</p>	<p>IC NO. <b>L74275AIDD, LT4321UUF, LTM8027EV</b></p> <p>REV. <b>2</b></p> <p>DATE: 03/05/2014, 10:30 AM</p>
	<p>SCALE = NONE</p>	<p>TITLE: <b>SCHEMATIC</b></p> <p><b>SMALL-SIZED PoE PD WITH POWER SUPPLY uMODULE</b></p>	<p>SHEET 3 OF 3</p>

Figure 5. DC2125 Demo Circuit Schematic, Sheet 3



Information furnished by Linear Technology Corporation is believed to be accurate and reliable. However, no responsibility is assumed for its use. Linear Technology Corporation makes no representation that the interconnection of its circuits as described herein will not infringe on existing patent rights.

# DEMO MANUAL DC2125

---

## DEMONSTRATION BOARD IMPORTANT NOTICE

Linear Technology Corporation (LTC) provides the enclosed product(s) under the following **AS IS** conditions:

This demonstration board (DEMO BOARD) kit being sold or provided by Linear Technology is intended for use for **ENGINEERING DEVELOPMENT OR EVALUATION PURPOSES ONLY** and is not provided by LTC for commercial use. As such, the DEMO BOARD herein may not be complete in terms of required design-, marketing-, and/or manufacturing-related protective considerations, including but not limited to product safety measures typically found in finished commercial goods. As a prototype, this product does not fall within the scope of the European Union directive on electromagnetic compatibility and therefore may or may not meet the technical requirements of the directive, or other regulations.

If this evaluation kit does not meet the specifications recited in the DEMO BOARD manual the kit may be returned within 30 days from the date of delivery for a full refund. **THE FOREGOING WARRANTY IS THE EXCLUSIVE WARRANTY MADE BY THE SELLER TO BUYER AND IS IN LIEU OF ALL OTHER WARRANTIES, EXPRESSED, IMPLIED, OR STATUTORY, INCLUDING ANY WARRANTY OF MERCHANTABILITY OR FITNESS FOR ANY PARTICULAR PURPOSE. EXCEPT TO THE EXTENT OF THIS INDEMNITY, NEITHER PARTY SHALL BE LIABLE TO THE OTHER FOR ANY INDIRECT, SPECIAL, INCIDENTAL, OR CONSEQUENTIAL DAMAGES.**

The user assumes all responsibility and liability for proper and safe handling of the goods. Further, the user releases LTC from all claims arising from the handling or use of the goods. Due to the open construction of the product, it is the user's responsibility to take any and all appropriate precautions with regard to electrostatic discharge. Also be aware that the products herein may not be regulatory compliant or agency certified (FCC, UL, CE, etc.).

No License is granted under any patent right or other intellectual property whatsoever. **LTC assumes no liability for applications assistance, customer product design, software performance, or infringement of patents or any other intellectual property rights of any kind.**

LTC currently services a variety of customers for products around the world, and therefore this transaction **is not exclusive**.

**Please read the DEMO BOARD manual prior to handling the product.** Persons handling this product must have electronics training and observe good laboratory practice standards. **Common sense is encouraged.**

This notice contains important safety information about temperatures and voltages. For further safety concerns, please contact a LTC application engineer.

Mailing Address:

Linear Technology  
1630 McCarthy Blvd.  
Milpitas, CA 95035

Copyright © 2004, Linear Technology Corporation



## X-ON Electronics

Largest Supplier of Electrical and Electronic Components

*Click to view similar products for [Power Management IC Development Tools](#) category:*

*Click to view products by [Analog Devices](#) manufacturer:*

Other Similar products are found below :

[EVAL-ADM1168LQEBZ](#) [EVB-EP5348UI](#) [MIC23451-AAAYFL EV](#) [MIC5281YMME EV](#) [DA9063-EVAL](#) [ADP122-3.3-EVALZ](#) [ADP130-0.8-EVALZ](#) [ADP130-1.2-EVALZ](#) [ADP130-1.5-EVALZ](#) [ADP130-1.8-EVALZ](#) [ADP1714-3.3-EVALZ](#) [ADP1716-2.5-EVALZ](#) [ADP1740-1.5-EVALZ](#) [ADP1752-1.5-EVALZ](#) [ADP1828LC-EVALZ](#) [ADP1870-0.3-EVALZ](#) [ADP1871-0.6-EVALZ](#) [ADP1873-0.6-EVALZ](#) [ADP1874-0.3-EVALZ](#) [ADP1882-1.0-EVALZ](#) [ADP199CB-EVALZ](#) [ADP2102-1.25-EVALZ](#) [ADP2102-1.875EVALZ](#) [ADP2102-1.8-EVALZ](#) [ADP2102-2-EVALZ](#) [ADP2102-3-EVALZ](#) [ADP2102-4-EVALZ](#) [ADP2106-1.8-EVALZ](#) [ADP2147CB-110EVALZ](#) [AS3606-DB](#) [BQ24010EVM](#) [BQ24075TEVM](#) [BQ24155EVM](#) [BQ24157EVM-697](#) [BQ24160EVM-742](#) [BQ24296MEVM-655](#) [BQ25010EVM](#) [BQ3055EVM](#) [NCV891330PD50GEVB](#) [ISLUSBI2CKIT1Z](#) [LM2744EVAL](#) [LM2854EVAL](#) [LM3658SD-AEV/NOPB](#) [LM3658SDEV/NOPB](#) [LM3691TL-1.8EV/NOPB](#) [LM4510SDEV/NOPB](#) [LM5033SD-EVAL](#) [LP38512TS-1.8EV](#) [EVAL-ADM1186-1MBZ](#) [EVAL-ADM1186-2MBZ](#)