

DESCRIPTION

Demonstration circuit 2158A hosts a high accuracy RMS Power Detector featuring the [LTC®5596 IC](#). This device is a wide dynamic range RMS RF Power Detector operational from 100MHz to 40GHz. The input dynamic range with 1dB accuracy is up to 35dB depending on frequency. The detector output voltage slope is normally 29mV/dB. The DC2158A Demo Circuit is optimized for wide operational frequency range up to 40GHz with 2.9mm SMK edge mount connector. Input impedance to LTC5596 is internally matched to 50Ω. It is suitable for RMS measurements of high crest factor waveforms up to 12dB peak/average ratio. No external coupling capacitor is necessary if DC voltage at RF_{IN} pin is kept below 1.0V. Contact applications support for more information.

Design files for this circuit board are available at <http://www.linear.com/demo/DC2158A>

ABSOLUTE MAXIMUM INPUT RATINGS

(Note 1)

Supply Voltage (V _{CC}):	3.8V
DC Voltage at RF _{IN} :	-0.3V to 1.0V
DC Voltage at FLTR:	-0.3V to 0.4V
DC Voltage at EN:	-0.3V to 3.8V
RF _{IN} Input Power-Average:	15dBm
T _{JMAX} :	150°C
Case Operating Temperature Range:	-40°C to 105°C
Storage Temperature Range:	-65°C to 150°C

Note 1: Voltage on all pins must not exceed V_{CC}+0.3V or be less than -0.3V.

CAUTION: This part is sensitive to electrostatic discharge (ESD). Observe proper ESD precautions when handling the LTC5596.

LT, LTC, LTM, Linear Technology and the Linear logo are registered trademarks of Linear Technology Corporation. All other trademarks are the property of their respective owners.

TEST SETUP

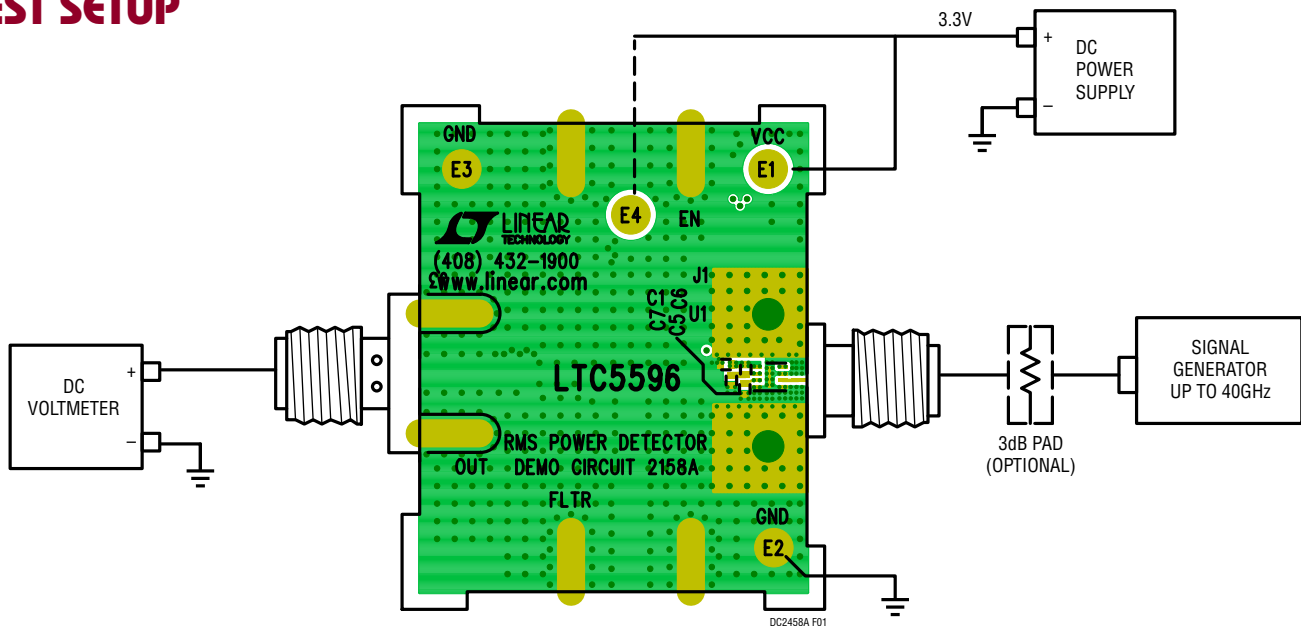


Figure 1: Test Setup for RF Performance Measurements

NOTES ON TEST EQUIPMENT AND SETUP

- Use a high performance signal generator with accurate output power levels up to 40GHz, such as Rohde & Schwarz SMF100A.
- Demo Board DC2158A includes the SMK 2.9mm connector for best performance up to 40GHz.
- Connecting cable for RF signal should be rated up to 40GHz for the best performance.
- Optional input attenuation can be used to improve return loss, but also shifts the log intercept point accordingly.
- Use high quality power supply with low noise, able to support 3.3V with 40mA of current.

QUICK START PROCEDURE

1. Remove the DC2158A from its protective packaging in an ESD-safe working area (see Figure 1).
2. With power supply turned off, connect V_{CC} and EN turret to the supply positive output. And GND to the negative supply output. Keep the leads to be as short as possible to avoid voltage overshoot.
3. Slowly ramp up the V_{CC} together with EN supply to 3.3V. Recommended ramp time is 1ms minimum. Do not float EN.
4. Connect the RF input to the signal generator at the 2.92mm connector.
5. Set the frequency and power level (less than +10dBm) of the signal generator.
6. Measure the output voltage with the DMM.
7. Sweep the power level to generate the transfer curve V_{OUT} vs Input Power.

DEMO BOARD USAGE NOTES

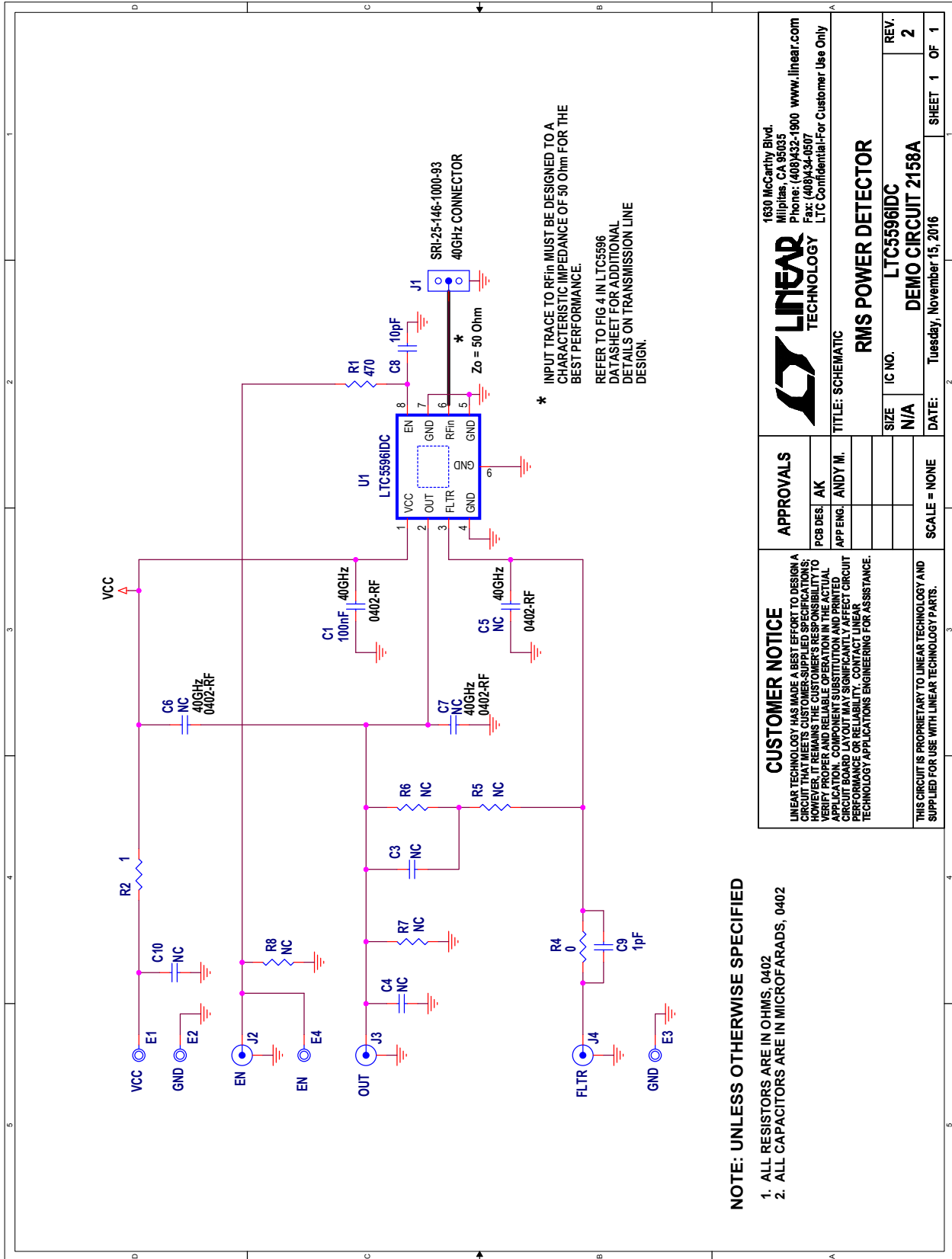
1. Demo Board DC2158A has provisions for interstage filter cap. Additional capacitor (C3) can be installed to slow down the transient response to reduce the output ripple. Short R5 and install C3. The range for C3 is 10pF to 1nF.
2. The detector output slope is approximately 29mV/dB.
3. Linear regression is used to generate the slope and intercept point from the best fit straight line.
4. Linearity Error= $V_{OUT}/\text{Slope} + \text{Log Intercept} - \text{Input Power}$.
5. A minimum two point calibration is necessary for most applications. Additional calibration points will improve the accuracy of the power detection.

DEMO MANUAL DC2158A

PARTS LIST

ITEM	QTY	REFERENCE	PART DESCRIPTION	MANUFACTURER/PART NUMBER
Required Circuit Components				
1	1	C1	CAP, 100nF, FOR 40GHz, 0402	
2	7	C3, C4, R5, R6, R7, R8, C10	NC, 0402	
3	3	C5, C6, C7	NC, 0402	
4	1	C8	CAP, NPO, 10pF, 5%, 50V, 0402	MURATA, GRM1555C1H100JA01D
5	1	C9	NC, 0402	
6	4	E1-E4	TURRET, PAD .061"	MILL-MAX, 2308-2-00-80-00-00-07-0
8	1	J1	CONN, 2.9mm JACK TO EDGE-LAUNCH, DC - 40GHz	SRI CON., 25-146-1000-93
9	3	J2-J4	CONN, SMA 50Ω EDGE-LAUNCH	E. F. JOHNSON, 142-0701-851
10	1	R1	RES, CHIP, 470, 1%, 0402	VISHAY, CRCW0402470RFKED
11	1	R2	RES, CHIP, 1, 1%, 0402	VISHAY, CRCW04021R00FNED
12	1	R4	NC, 0402	
13	1	U1	IC, LINEAR TECHNOLOGY, LTC5596IDC, DFN 2 × 2	LINEAR TECH., LTC5596IDC

SCHEMATIC DIAGRAM



NOTE: UNLESS OTHERWISE SPECIFIED

1. ALL RESISTORS ARE IN OHMS, 0402
2. ALL CAPACITORS ARE IN MICROFARADS, 0402

CUSTOMER NOTICE
 LINEAR TECHNOLOGY HAS MADE A BEST EFFORT TO DESIGN A CIRCUIT THAT MEETS CUSTOMER-SUPPLIED SPECIFICATIONS; HOWEVER, IT REMAINS THE CUSTOMER'S RESPONSIBILITY TO VERIFY PROPER AND RELIABLE OPERATION IN THE ACTUAL APPLICATION. COMPONENT SUBSTITUTION AND PRINTED BOARD MANUFACTURING VARIATIONS MAY AFFECT CIRCUIT PERFORMANCE OR RELIABILITY. CONTACT LINEAR TECHNOLOGY APPLICATIONS ENGINEERING FOR ASSISTANCE.

THIS CIRCUIT IS PROPRIETARY TO LINEAR TECHNOLOGY AND SUPPLIED FOR USE WITH LINEAR TECHNOLOGY PARTS.

		1630 McCarthy Blvd. Milpitas, CA 95035 Phone: (408)432-1900 www.linear.com Fax: (408)434-0507 LTC Confidential-For Customer Use Only	
		TITLE: SCHEMATIC	
APPROVALS PCB DES: AK APP ENG: ANDY M.	SCALE = NONE	SIZE: N/A	IC NO.: LTC5596DC
REV. 2	DATE: Tuesday, November 15, 2016	SHEET 1 OF 1	TITLE: RMS POWER DETECTOR DEMO CIRCUIT 2158A

DEMO MANUAL DC2158A

DEMONSTRATION BOARD IMPORTANT NOTICE

Linear Technology Corporation (LTC) provides the enclosed product(s) under the following **AS IS** conditions:

This demonstration board (DEMO BOARD) kit being sold or provided by Linear Technology is intended for use for **ENGINEERING DEVELOPMENT OR EVALUATION PURPOSES ONLY** and is not provided by LTC for commercial use. As such, the DEMO BOARD herein may not be complete in terms of required design-, marketing-, and/or manufacturing-related protective considerations, including but not limited to product safety measures typically found in finished commercial goods. As a prototype, this product does not fall within the scope of the European Union directive on electromagnetic compatibility and therefore may or may not meet the technical requirements of the directive, or other regulations.

If this evaluation kit does not meet the specifications recited in the DEMO BOARD manual the kit may be returned within 30 days from the date of delivery for a full refund. **THE FOREGOING WARRANTY IS THE EXCLUSIVE WARRANTY MADE BY THE SELLER TO BUYER AND IS IN LIEU OF ALL OTHER WARRANTIES, EXPRESSED, IMPLIED, OR STATUTORY, INCLUDING ANY WARRANTY OF MERCHANTABILITY OR FITNESS FOR ANY PARTICULAR PURPOSE. EXCEPT TO THE EXTENT OF THIS INDEMNITY, NEITHER PARTY SHALL BE LIABLE TO THE OTHER FOR ANY INDIRECT, SPECIAL, INCIDENTAL, OR CONSEQUENTIAL DAMAGES.**

The user assumes all responsibility and liability for proper and safe handling of the goods. Further, the user releases LTC from all claims arising from the handling or use of the goods. Due to the open construction of the product, it is the user's responsibility to take any and all appropriate precautions with regard to electrostatic discharge. Also be aware that the products herein may not be regulatory compliant or agency certified (FCC, UL, CE, etc.).

No License is granted under any patent right or other intellectual property whatsoever. **LTC assumes no liability for applications assistance, customer product design, software performance, or infringement of patents or any other intellectual property rights of any kind.**

LTC currently services a variety of customers for products around the world, and therefore this transaction **is not exclusive**.

Please read the DEMO BOARD manual prior to handling the product. Persons handling this product must have electronics training and observe good laboratory practice standards. **Common sense is encouraged.**

This notice contains important safety information about temperatures and voltages. For further safety concerns, please contact a LTC application engineer.

Mailing Address:

Linear Technology
1630 McCarthy Blvd.
Milpitas, CA 95035

Copyright © 2004, Linear Technology Corporation

X-ON Electronics

Largest Supplier of Electrical and Electronic Components

Click to view similar products for [RF Development Tools](#) category:

Click to view products by [Analog Devices](#) manufacturer:

Other Similar products are found below :

[MAAM-011117](#) [MAAP-015036-DIEEV2](#) [EV1HMC1113LP5](#) [EV1HMC6146BLC5A](#) [EV1HMC637ALP5](#) [EVAL-ADG919EBZ](#) [ADL5363-EVALZ](#) [LMV228SDEVAL](#) [SKYA21001-EVB](#) [SMP1331-085-EVB](#) [EV1HMC618ALP3](#) [EVAL01-HMC1041LC4](#) [MAAL-011111-000SMB](#) [MAAM-009633-001SMB](#) [MASW-000936-001SMB](#) [107712-HMC369LP3](#) [107780-HMC322ALP4](#) [SP000416870](#) [EV1HMC470ALP3](#) [EV1HMC520ALC4](#) [EV1HMC244AG16](#) [MAX2614EVKIT#](#) [124694-HMC742ALP5](#) [SC20ASATEA-8GB-STD](#) [MAX2837EVKIT+](#) [MAX2612EVKIT#](#) [MAX2692EVKIT#](#) [EV1HMC629ALP4E](#) [SKY12343-364LF-EVB](#) [108703-HMC452QS16G](#) [EV1HMC863ALC4](#) [119197-HMC658LP2](#) [EV1HMC647ALP6](#) [ADL5725-EVALZ](#) [106815-HMC441LM1](#) [EV1HMC1018ALP4](#) [UXN14M9PE](#) [MAX2016EVKIT](#) [EV1HMC939ALP4](#) [MAX2410EVKIT](#) [MAX2204EVKIT+](#) [EV1HMC8073LP3D](#) [SIMSA868-DKL](#) [SIMSA868C-DKL](#) [SKY65806-636EK1](#) [SKY68020-11EK1](#) [SKY67159-396EK1](#) [SKY66181-11-EK1](#) [SKY65804-696EK1](#) [SKY13396-397LF-EVB](#)