

## LT4276, LT4321 PoE with Synchronous Forward and Ideal Diode Bridge

### DESCRIPTION

Demonstration circuit 2262 is a PoE Powered Device (PD) with a synchronous forward isolated power supply featuring the **LT<sup>®</sup>4276** and an ideal diode bridge controller (LT4321).

The LT4276 provides IEEE802.3af (PoE, Type 1), IEEE802.3at (PoE+, Type 2), and LTPoE++ PD interfacing and power supply control. When the PD is connected to a PSE, the LT4276 turns on an external, low-resistance, high-power N-channel Hot Swap™ FET. The LT4276 controls a high-power, small-sized power supply that utilizes a highly efficient, synchronously rectified, active clamp

forward topology. The LT4321 provides further efficiency improvement by minimizing bridge losses.

The DC2262A-B supplies a 12V output at up to 7A. It also demonstrates the use of an optional auxiliary power supply input of 48V. When present, the auxiliary supply takes priority over the PoE power path.

**Design files for this circuit board are available at <http://www.linear.com/demo/DC2262A-B>**

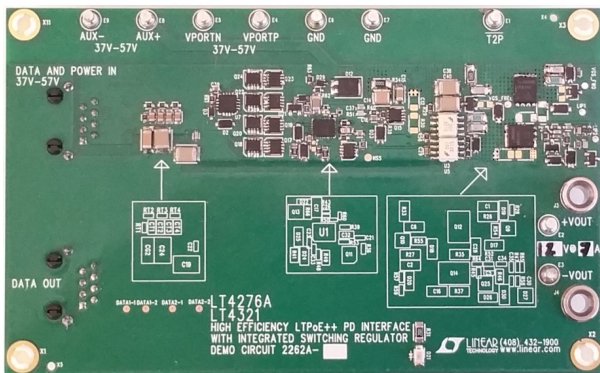
LT, LT, LTC, LTM, Linear Technology and the Linear logo are registered trademarks of Analog Devices, Inc. All other trademarks are the property of their respective owners.

### PERFORMANCE SUMMARY

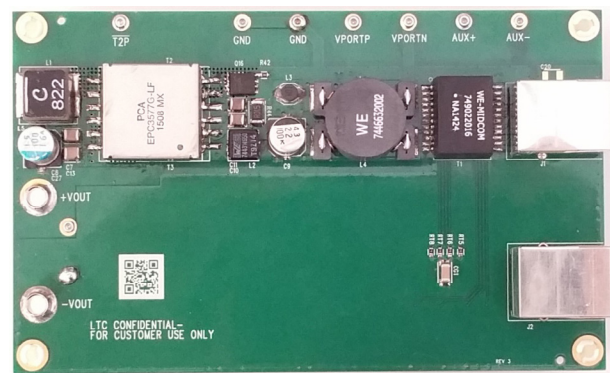
Specifications are at  $T_A = 25^\circ\text{C}$

PARAMETER	CONDITIONS	MIN	TYP	MAX	UNITS
Port Voltage ( $V_{\text{PORT}}$ )	At Ethernet Port	37		57	V
Auxiliary Voltage	From AUX <sup>+</sup> to AUX <sup>-</sup> Terminals	37		57	V
Output Voltage			12		V
Output Current				7	A
Output Voltage Ripple	$V_{\text{PORT}} = 57\text{V}$ , $I_{\text{OUT}} = 13\text{A}$		54		mVpp
Output Regulation			$\pm 0.05$		%
Efficiency	$V_{\text{PORT}} = 41\text{V}$ , Ethernet Port to Output		93		%
Switching Frequency			250		kHz

### BOARD PHOTO



Top Side



Bottom Side

## TYPICAL PERFORMANCE CHARACTERISTICS

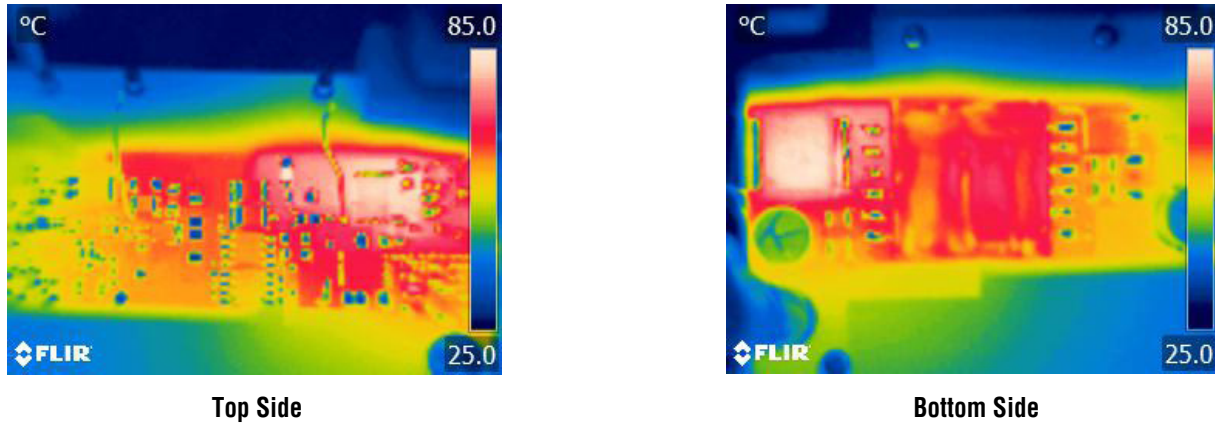


Figure 1. Thermal Pictures —  $V_{PORT}=57V, 12V/7A$

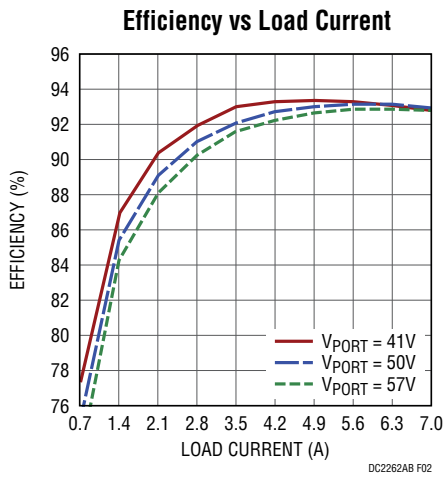


Figure 2. Efficiency (Ethernet Port to Output)

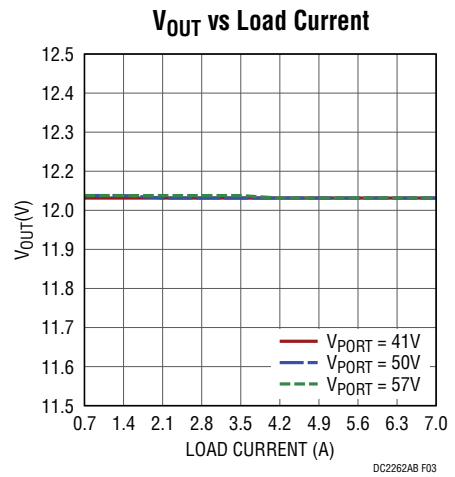


Figure 3. Output Voltage Regulation

TYPICAL PERFORMANCE CHARACTERISTICS

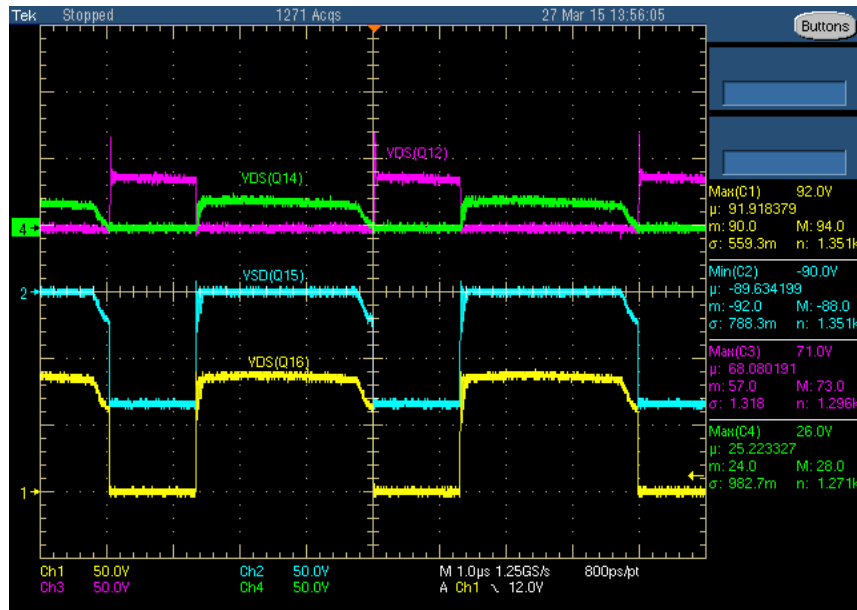


Figure 4. Stresses ( $V_{PORT} = 57V, 12V/7A$ )

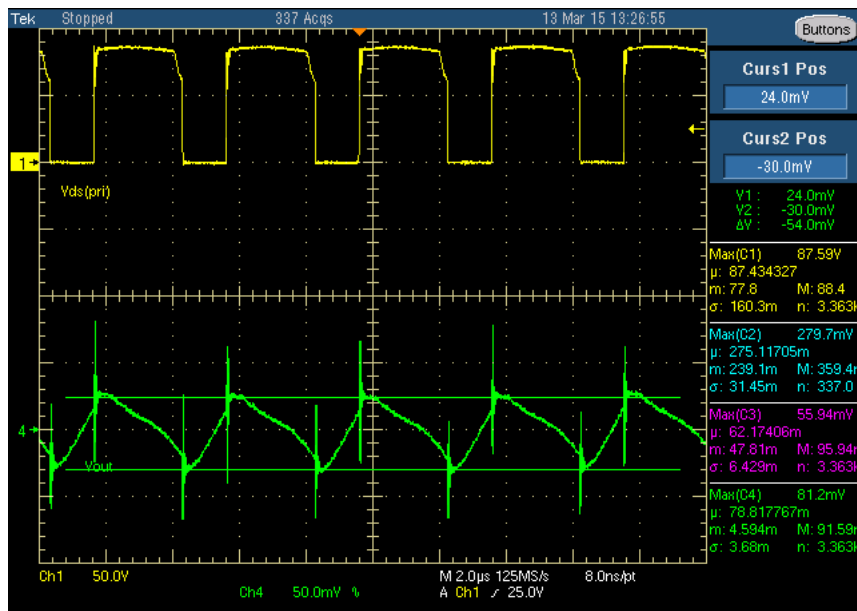


Figure 5. Output Voltage Ripple ( $V_{PORT} = 57V, 12V/7A$ )

TYPICAL PERFORMANCE CHARACTERISTICS



Figure 6. Load Transient Response ( $V_{PORT} = 57V$ , 3.5A to 7A to 3.5A)

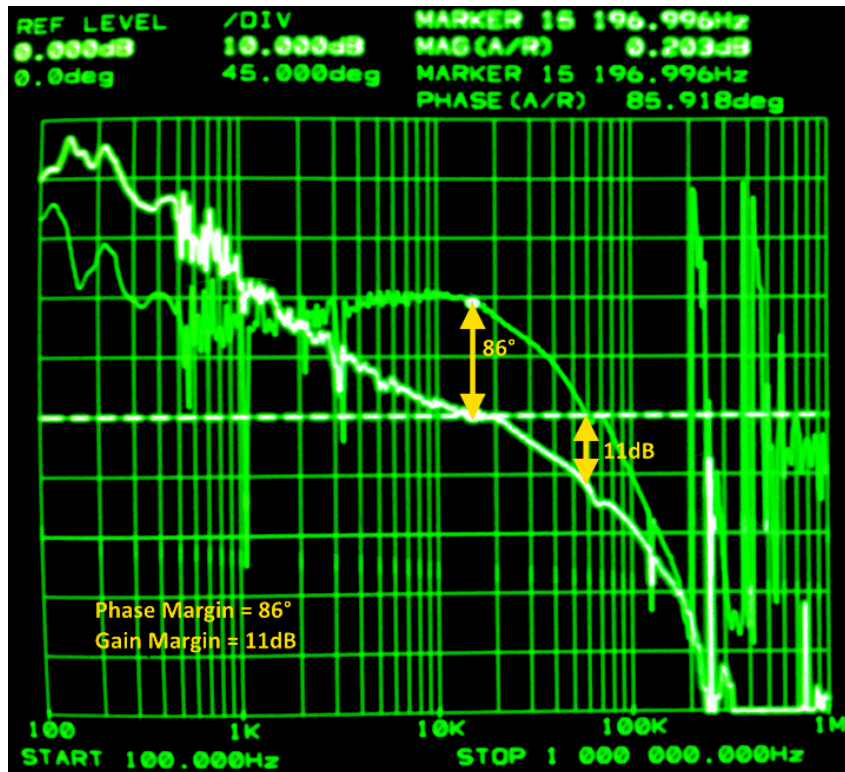


Figure 7. Gain and Phase Margin ( $V_{PORT} = 57V$ , 12V/7A)

## QUICK START PROCEDURE

Demonstration circuit 2262A-B is easy to set up to evaluate the performance of the LT4276 in a PoE application. Refer to Figure 8 for proper equipment setup and follow the procedure below:

NOTE: When measuring the input or output voltage ripple, care must be taken to avoid a long ground lead on the oscilloscope probe. Measure the output voltage ripple by touching the probe tip and probe ground directly across the +VOUT and -VOUT terminals. See Figure 9 for proper scope probe technique.

1. Place test equipment (voltmeters, ammeters, power supplies, and electronic load) as shown in Figure 8.

2. Input supplies:

- a. Connect a LTPoE+ capable PSE with a CAT-5 cable to the RJ45 connector, J1 such as the DC1814A-D.
- b. Or, connect a 37V to 57V capable power supply (“Power Supply” in Figure 8) across VPORTP and VPORTN.
- c. If evaluating the auxiliary power supply (“Auxiliary Supply” in Figure 8), connect a 37V to 57V capable power supply across AUX+ to AUX-.

3. Check for the proper output voltage of 12V.

4. Once the proper output voltage is confirmed, adjust the load within the operating range and observe the output voltage regulation, ripple voltage, efficiency, and other parameters.

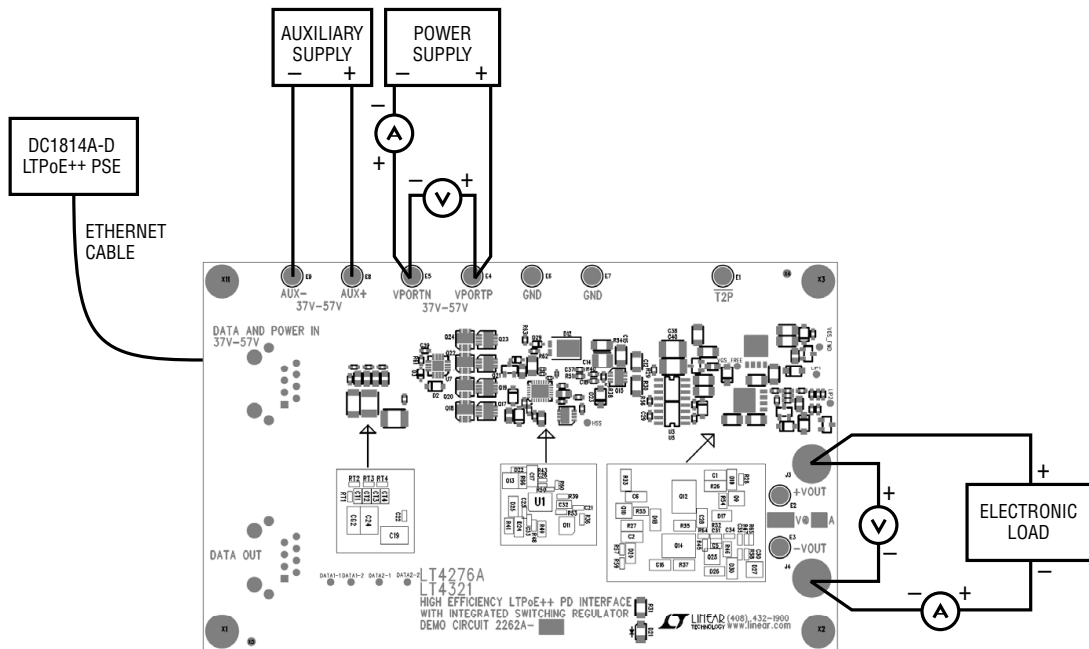


Figure 8. Proper Measurement Equipment Setup

DC2262AB F08

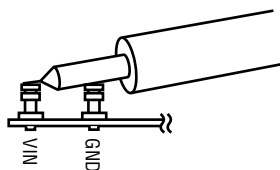


Figure 9. Measuring Input or Output Ripple

# DEMO MANUAL DC2262A-B

## PARTS LIST

ITEM	QTY	REFERENCE	PART DESCRIPTION	MANUFACTURER/PART NUMBER
<b>DC2262A Required Circuit Components</b>				
1	2	CG1, CG2	CAP, CER, X7R 1000pF 2kV 10% 1808	MURATA GR442QR73D102KW01L
2	4	CT1, CT2, CT3, CT4	CAP, CER, X7R 0.01μF 100V 20% 0805	MURATA GRM21BR72A103MA01L
3	1	C9	CAP, ELEC, 22μF 100V 20% 8 X 10.2	SUNCON 100CE22KX
4	2	C10, C11	CAP, CER, X7R 2.2μF 100V 10% 1210	MURATA GRM32ER72A225KA35
5	0	C20	CAP, CER, OPT 1206	OPT
6	1	C17	CAP, CER, X7R 10μF 16V 10% 0805	MURATA GRM31CR71A106KA01
7	4	C5, C18, C29, C31	CAP, CER, X7R 0.1μF 50V 20% 0603	MURATA GRM188R71H104MA93
8	4	C19, C24, C38, C40	CAP, CER, X7R 2.2nF 2kV 10% 1812	MURATA GR443QR73D222KW01L
9	1	C21	CAP, CER, X7R 10nF 100V 10% 0603	MURATA GRM188R72A103KA01D
10	1	C22	CAP, CER, X7R 1nF 100V 10% 0603	MURATA GRM188R72A102KA01
11	2	C23, C39	CAP, CER, X7R 0.047μF 100V 10% 0603	KEMET C0603C473K1RACTU
12	0	C26	CAP, CER, OPT 0402	OPT
13	1	C33	CAP, CER, COG 100pF 50V 10% 0603	TDK C1608C0G1H101K080AA
14	1	C37	CAP, CER, X7R 100pF 50V 10% 0603	AVX 06035C101KAT2A
15	3	D2, D24, D25	DIODE, TVS, PTVS58VS1UR 58V SOD123	NXP PTVS58VS1UR
16	1	D3	DIODE, ZENER, MMSZ5252BS 24V SOD323	DIODES INC MMSZ5252BS
17	1	D12	DIODE, SCHOTTKY, PDS5100H 100V PowerDI5	DIODES INC PDS5100H
18	1	D21	DIODE, LED, 1208, GREEN	ROHM SML-010FTT86L
19	1	D22	DIODE, SILICON, BAV19WS 120V SOD-323	DIODES INC. BAV19WS
20	1	D23	DIODE, SCHOTTKY, CMMSH1-40L 40V SOD-123F	CENTRAL SEMI. CMMSH1-40L
21	1	D27	IC, REFERENCE, ZR431F01TA SOT23	DIODES INC ZR431F01TA
22	1	D29	DIODE, SCHOTTKY, BAT54WS 30V SOD323	DIODE INC BAT54WS
23	9	E1, E2, E3, E4, E5, E6, E7, E8, E9	TP, TURRET, PAD150-094 0.094"	MILL-MAX 2501-2-00-80-00-00-07-0
24	2	J1, J2	CONN, RJ-45, SS-6488-NF-K1	STEWART CONNECTOR SS-6488-NF-K1 ALTERNATE SS-6488S-A-NF
25	2	J3, J4	CONN, BANANA, 575-4 0.175"	KEYSTONE 575-4
26	1	L3	IND, 100μH DO1608	COILCRAFT DO1608C-104
27	1	L4	IND, CMC, 2.2mH WE-LF	WÜRTH 7446632002
28	1	Q11	MOSFET, N-CH, PSMN040-100MSE 100V LFPK33	NXP PSMN040-100MSE
29	1	Q13	TRANSISTOR, PNP, FMMT723 100V SOT23	DIODES INC. FMMT723
30	1	Q15	MOSFET, N-CH, FDMC2523P 150V POWER33	FAIRCHILD FDMC2523P
31	8	Q17, Q18, Q19, Q20, Q21, Q22, Q23, Q24	MOSFET, N-CH, PSMN075-100MSE 100 LFPK33	NXP PSMN075-100MSE
32	8	RT1, RT2, RT3, RT4, RT5, RT6, RT7, RT8	RES, CHIP, 75Ω 5% 0603	NIC NRC06J750TRF
33	1	R28	RES, CHIP, 47k 5% 0603	NIC NRC06J473TRF
34	3	R29, R38, R57	RES, CHIP, 10k 5% 0603	NIC NRC06J103TRF
35	0	R30, R35, R37	RES, CHIP, OPT 1206	OPT
36	1	R36	RES, CHIP, 3.3k 5% 0603	NIC NRC06J332TRF
37	3	R40, R42, R65	RES, CHIP, 0Ω 5% 0603	NIC NRC06Z0TRF

## PARTS LIST

ITEM	QTY	REFERENCE	PART DESCRIPTION	MANUFACTURER/PART NUMBER
38	1	R41	RES, CHIP, 8.2Ω 5% 0805	NIC NRC10J8R2TRF
39	3	R43, R50, R60	RES, CHIP, 0Ω 5% 0402	NIC NRC04ZOTRF
40	1	R51	RES, CHIP, 100k 5% 0603	NIC NRC06J104TRF
41	1	R53	RES, CHIP, 107k 1% 0603	NIC NRC06F1073TRF
42	1	R56	RES, CHIP, 750Ω 5% 0603	VISHAY CRCW0603750RJNEA
43	1	R61	RES, CHIP, 0Ω 5% 0603	NIC NRC06ZOTRF
44	1	R62	RES, CHIP, 52.3k 1% 0603	NIC NRC06F5232TRF
45	1	R63	RES, CHIP, 174k 1% 0603	NIC NRC06F1743TRF
46	1	R66	RES, CHIP, 20Ω 5% 0805	NIC NRC06F20R0TRF
47	1	T1	TRANSFORMER, ETHERNET, 749022016	WÜRTH 749022016
48	2	U3, U5	OPTO, MOC207M SOIC-8	FAIRCHILD MOC207M
49	1	U7	IC, PoE IDEAL BRIDGE CONTROLLER, LT4321IUF QFN16	LINEAR TECHNOLOGY LT4321IUF
50	4	MH1, MH2, MH3, MH4	STANDOFF, SNAP ON, 0.625"	KEYSTONE 8834

### DC2262A-B Required Circuit Components

1	2	C1, C2	CAP, CER, NP0/C0G 100pF 100V 1206	AVX 12061A101KAT2A
2	0	C16	CAP, CER, OPT 1206	OPT
3	1	C6	CAP, CER, NP0/C0G 820pF 100V 1206	MURATA GRM3195C2A821JA01D
4	2	C7, C13	CAP, CER, X5R 22μF 16V 20% 1210	MURATA GRM32ER61C226ME20
5	0	C8	CAP, ELEC, OPT 6.3 X 6.0	SUNCON OPT
6	0	C12, C28	CAP, CER, OPT 1206	OPT
7	1	C14	CAP, CER, X7R 0.22μF 250V 10% 1210	MURATA GRM32DR72E224KW01
8	1	C15	CAP, CER, X5R 33nF 250V 1206	MURATA GRM31CR72E333KW03
9	1	C27	CAP, ELEC, 100μF 16V 20% 8 X 10.5	SUNCON 16HVA100M
10	1	C30	CAP, CER, X7R 330pF 50V 10% 0603	MURATA GRM188R71H331KA01D
11	1	C32	CAP, CER, X7R 1μF 10V 10% 0805	MURATA GRM21BR71A105KA01L
12	1	C34	CAP, CER, X7R 100pF 50V 10% 0603	TDK C1608C0G1H101K080AA
13	1	C35	CAP, CER, X7R 6.8nF 50V 10% 0603	MURATA GRM188R71H472KA01D
14	1	D26	DIODE, ZENER, MMSZ4700T1G 13V SOD-123	ON-SEMI MMSZ4700T1G
15	2	D17, D18	DIODE, SCHOTTKY, CMMSH1-100 100V SOD-123F	CENTRAL SEMI. CMMSH1-100
16	2	D19, D20	DIODE, ZENER, CMHZ5236B 7.5V SOD-123	CENTRAL SEMI. CMHZ5236B
17	1	D30	DIODE, SCHOTTKY, CMMSH1-60 60V SOD-123F	CENTRAL SEMI. CMMSH1-60
18	1	L1	IND, 8.2μH XAL1010-822ME	COILCRAFT XAL1010-822ME
19	1	L2	IND, 4.9μH 744314490	WÜRTH 744 314 490
20	0	L5	IND, OPT HC1	OPT
21	2	Q9, Q10	TRANSISTOR, NPN, FMMT624 50V SOT23	DIODES INC. FMMT624
22	2	Q12, Q14	MOSFET, N-CH, BSC123N08NS3 80V PG-TDSON-8	INFINEON BSC123N08NS3
23	1	Q16	MOSFET, N-CH, BSC190N12NS3 120V PG-TDSON-8	INFINEON BSC190N12NS3
24	1	Q25	TRANSISTOR, NPN, MMBT3904 40V SOT23	DIODES INC. MMBT3904
25	2	R26, R27	Res, Chip, 5.1k 5% 1206	NIC NRC12J512TRF
26	1	R52	RES, CHIP, 20k 5% 0603	VISHAY CRCW060320K0JNEA

# DEMO MANUAL DC2262A-B

## PARTS LIST

ITEM	QTY	REFERENCE	PART DESCRIPTION	MANUFACTURER/PART NUMBER
27	1	R31	RES, CHIP, 2k 5% 1206	NIC NRC12J202TRF
28	0	R37	RES, CHIP, OPT 1206	OPT
29	1	R33	RES, CHIP, 7.5 $\Omega$ 5% 1206	VISHAY CRCW06037R50JNEA
30	1	R34	RES, CHIP, 100 $\Omega$ 5% 1206	NIC NRC12J101TRF
31	0	R35	RES, CHIP, OPT 1206	OPT
32	1	R39	RES, CHIP, 29.4k 1% 0603	VISHAY CRCW060329K4FKEA
33	1	R44	RES, CHIP, 15m 1% 2010	VISHAY WSL2010R0150FEA
34	1	R45	RES, CHIP, 13k 5% 0603	VISHAY CRCW060313K0JNEA
35	1	R46	RES, CHIP, 10 $\Omega$ 5% 0805	NIC NRC06J100TRF
36	0	R64	RES, CHIP, OPT 0603	OPT
37	1	R47	RES, CHIP, 38.3k 1% 0603	NIC NRC06F3832TRF
38	1	R48	RES, CHIP, 118 $\Omega$ 1% 0603	NIC NRC06F1180TRF
39	1	R49	RES, CHIP, 52.3 $\Omega$ 1% 0805	NIC NRC10F52R3TRF
40	0	R54, R55	RES, CHIP, OPT 0805	OPT
41	1	R58	RES, CHIP, 10.0k 1% 0603	NIC NRC06F1002TRF
42	1	R59	RES, CHIP, 820 $\Omega$ 5% 0603	VISHAY CRCW0603820RJNEA
43	1	T2	TRANSFORMER, FORWARD, EPC3577G-LF EFD20	PCA EPC3577G-LF
44	0	T3	TRANSFORMER, FORWARD, OPT PLANAR	OPT
45	1	U1	IC, PD & SWITCHER CONTROLLER, LT4276 QFN28	LINEAR TECHNOLOGY LT4276AHUFD



SCHEMATIC DIAGRAM

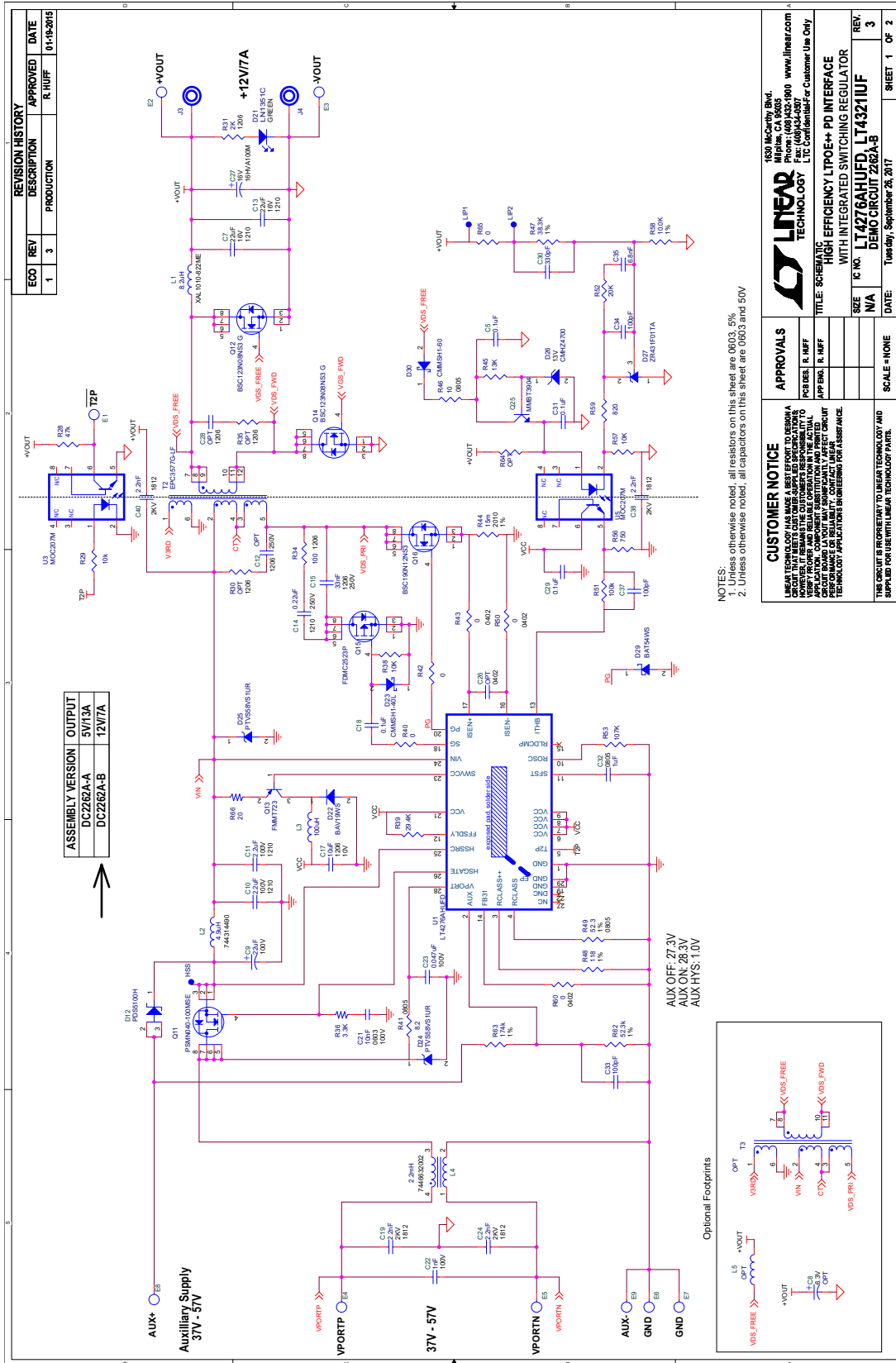
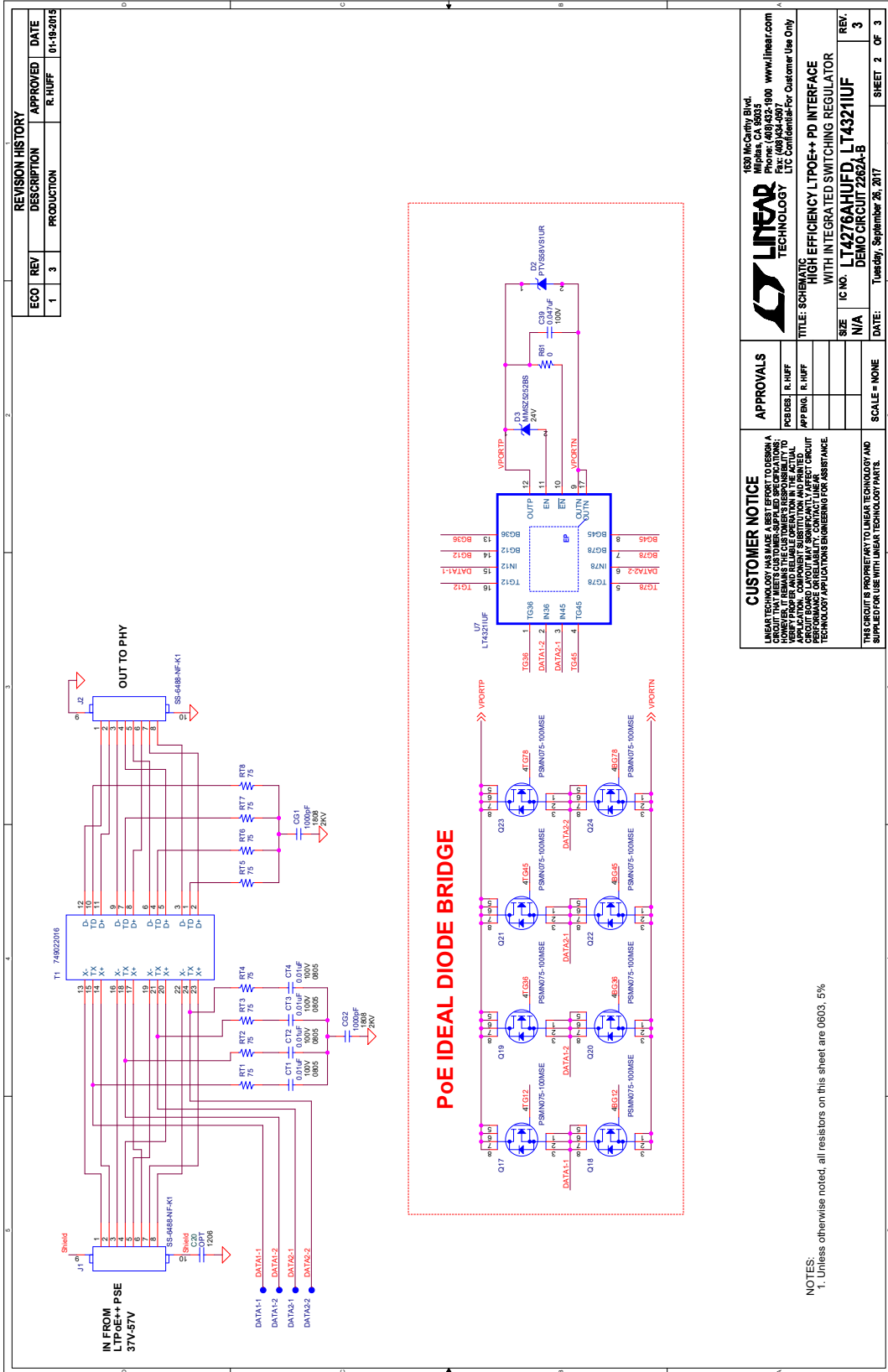


Figure 10. DC2262A-B Demo Circuit Schematic (Sheet 1)



## SCHEMATIC DIAGRAM



**LINER TECHNOLOGY**  
 1680 McCully Blvd.  
 Fremont, CA 94538  
 Phone: (408) 633-8800 www.linear.com  
 Fax: (408) 634-0007  
 LTC Confidential-For Customer Use Only

**LINER TECHNOLOGY**

WITH INTEGRATED SWITCHING REGULATOR  
**LT4276AHUFD, LT4321UUF**

REV. 3

DATE: Tuesday, September 26, 2017

---

**CUSTOMER NOTICE**  
 LINER TECHNOLOGY HAS MADE A BEST EFFORT TO DESIGN A CIRCUIT THAT MEETS CUSTOMER-SPECIFIED SPECIFICATIONS. HOWEVER, CUSTOMER SHOULD VERIFY PROPER AND RELIABLE OPERATION IN THE ACTUAL APPLICATION. CUSTOMER SHOULD BE AWARE THAT THE PERFORMANCE OF ANY CIRCUIT DESIGN DEPENDS ON MANY FACTORS. CUSTOMER SHOULD CONSULT WITH LINER TECHNOLOGY APPLICATIONS ENGINEERING FOR ASSISTANCE.

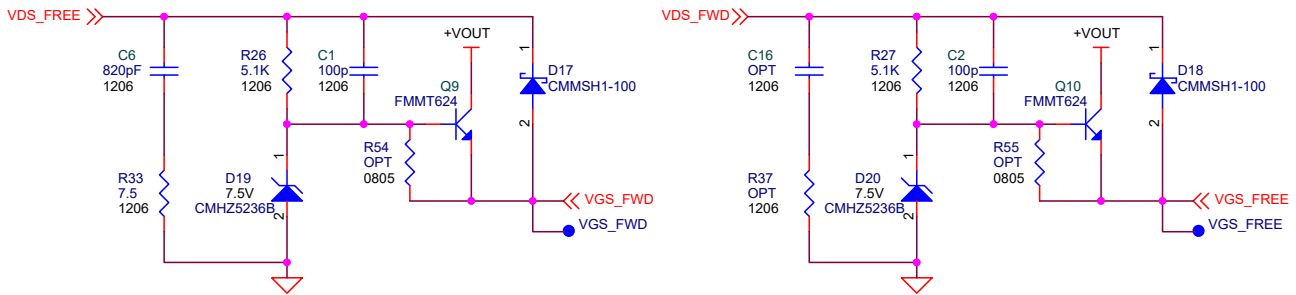
**APPROVALS**  
 PCBDES: R. HUFF  
 APP'ENG: R. HUFF  
 SCALE = NONE

**SIZE** N/A  
**IC NO.** LT4276AHUFD, LT4321UUF  
**REV.** 3  
**DATE:** Tuesday, September 26, 2017  
**SHEET** 2 OF 3

**TITLE:** SCHEMATIC  
**WITH INTEGRATED SWITCHING REGULATOR**  
**DEMO CIRCUIT 2262A-B**

Figure 11. DC2262A-B Demo Circuit Schematic (Sheet 2)

**SCHEMATIC DIAGRAM**



<p><b>CUSTOMER NOTICE</b>                  LINEAR TECHNOLOGY HAS MADE A BEST EFFORT TO DESIGN A CIRCUIT THAT MEETS CUSTOMER-SUPPLIED SPECIFICATIONS; HOWEVER, IT REMAINS THE CUSTOMER'S RESPONSIBILITY TO VERIFY PROPER AND RELIABLE OPERATION IN THE ACTUAL APPLICATION. COMPONENT SUBSTITUTION AND PRINTED CIRCUIT BOARD LAYOUT MAY SIGNIFICANTLY AFFECT CIRCUIT PERFORMANCE OR RELIABILITY. CONTACT LINEAR TECHNOLOGY APPLICATIONS ENGINEERING FOR ASSISTANCE.</p>	<b>APPROVALS</b>			1630 McCarthy Blvd. Milpitas, CA 95035 Phone: (408)432-1900 www.linear.com Fax: (408)434-0507 LTC Confidential-For Customer Use Only	
	PCB DES.	R. HUFF			
	APP ENG.	R. HUFF			
THIS CIRCUIT IS PROPRIETARY TO LINEAR TECHNOLOGY AND SUPPLIED FOR USE WITH LINEAR TECHNOLOGY PARTS.	SCALE = NONE	SIZE N/A	IC NO. <b>LT4276AHUFD, LT4321IUF</b>	DEMO CIRCUIT 2262A-B	
DATE: Tuesday, September 26, 2017			REV. 3		
SHEET 3 OF 3					

Figure 12. DC2262A-B Demo Circuit Schematic (Sheet 3)

# DEMO MANUAL DC2262A-B

---

## DEMONSTRATION BOARD IMPORTANT NOTICE

Linear Technology Corporation (LTC) provides the enclosed product(s) under the following **AS IS** conditions:

This demonstration board (DEMO BOARD) kit being sold or provided by Linear Technology is intended for use for **ENGINEERING DEVELOPMENT OR EVALUATION PURPOSES ONLY** and is not provided by LTC for commercial use. As such, the DEMO BOARD herein may not be complete in terms of required design-, marketing-, and/or manufacturing-related protective considerations, including but not limited to product safety measures typically found in finished commercial goods. As a prototype, this product does not fall within the scope of the European Union directive on electromagnetic compatibility and therefore may or may not meet the technical requirements of the directive, or other regulations.

If this evaluation kit does not meet the specifications recited in the DEMO BOARD manual the kit may be returned within 30 days from the date of delivery for a full refund. **THE FOREGOING WARRANTY IS THE EXCLUSIVE WARRANTY MADE BY THE SELLER TO BUYER AND IS IN LIEU OF ALL OTHER WARRANTIES, EXPRESSED, IMPLIED, OR STATUTORY, INCLUDING ANY WARRANTY OF MERCHANTABILITY OR FITNESS FOR ANY PARTICULAR PURPOSE. EXCEPT TO THE EXTENT OF THIS INDEMNITY, NEITHER PARTY SHALL BE LIABLE TO THE OTHER FOR ANY INDIRECT, SPECIAL, INCIDENTAL, OR CONSEQUENTIAL DAMAGES.**

The user assumes all responsibility and liability for proper and safe handling of the goods. Further, the user releases LTC from all claims arising from the handling or use of the goods. Due to the open construction of the product, it is the user's responsibility to take any and all appropriate precautions with regard to electrostatic discharge. Also be aware that the products herein may not be regulatory compliant or agency certified (FCC, UL, CE, etc.).

No License is granted under any patent right or other intellectual property whatsoever. **LTC assumes no liability for applications assistance, customer product design, software performance, or infringement of patents or any other intellectual property rights of any kind.**

LTC currently services a variety of customers for products around the world, and therefore this transaction **is not exclusive**.

**Please read the DEMO BOARD manual prior to handling the product.** Persons handling this product must have electronics training and observe good laboratory practice standards. **Common sense is encouraged.**

This notice contains important safety information about temperatures and voltages. For further safety concerns, please contact a LTC application engineer.

Mailing Address:

Linear Technology  
1630 McCarthy Blvd.  
Milpitas, CA 95035

Copyright © 2004, Linear Technology Corporation

## X-ON Electronics

Largest Supplier of Electrical and Electronic Components

*Click to view similar products for [Power Management IC Development Tools](#) category:*

*Click to view products by [Analog Devices](#) manufacturer:*

Other Similar products are found below :

[EVAL-ADM1168LQEBZ](#) [EVB-EP5348UI](#) [MIC23451-AAAYFL EV](#) [MIC5281YMME EV](#) [DA9063-EVAL](#) [ADP122-3.3-EVALZ](#) [ADP130-0.8-EVALZ](#) [ADP130-1.2-EVALZ](#) [ADP130-1.5-EVALZ](#) [ADP130-1.8-EVALZ](#) [ADP1714-3.3-EVALZ](#) [ADP1716-2.5-EVALZ](#) [ADP1740-1.5-EVALZ](#) [ADP1752-1.5-EVALZ](#) [ADP1828LC-EVALZ](#) [ADP1870-0.3-EVALZ](#) [ADP1871-0.6-EVALZ](#) [ADP1873-0.6-EVALZ](#) [ADP1874-0.3-EVALZ](#) [ADP1882-1.0-EVALZ](#) [ADP199CB-EVALZ](#) [ADP2102-1.25-EVALZ](#) [ADP2102-1.875EVALZ](#) [ADP2102-1.8-EVALZ](#) [ADP2102-2-EVALZ](#) [ADP2102-3-EVALZ](#) [ADP2102-4-EVALZ](#) [ADP2106-1.8-EVALZ](#) [ADP2147CB-110EVALZ](#) [AS3606-DB](#) [BQ24010EVM](#) [BQ24075TEVM](#) [BQ24155EVM](#) [BQ24157EVM-697](#) [BQ24160EVM-742](#) [BQ24296MEVM-655](#) [BQ25010EVM](#) [BQ3055EVM](#) [NCV891330PD50GEVB](#) [ISLUSBI2CKIT1Z](#) [LM2744EVAL](#) [LM2854EVAL](#) [LM3658SD-AEV/NOPB](#) [LM3658SDEV/NOPB](#) [LM3691TL-1.8EV/NOPB](#) [LM4510SDEV/NOPB](#) [LM5033SD-EVAL](#) [LP38512TS-1.8EV](#) [EVAL-ADM1186-1MBZ](#) [EVAL-ADM1186-2MBZ](#)