

DESCRIPTION

Demonstration circuit 2337A is an offline isolated flyback converter featuring LT[®]8315. The demo board outputs 12V, and maintains tight regulation with a load current from 4mA to 0.55A. It is optimized to operate over a wide AC input voltage range (90VAC to 265VAC, 47Hz to 63Hz). Output voltage accuracy stays within $\pm 5\%$ over the whole input voltage and load range.

The LT8315 is a high voltage flyback converter with integrated 630V/300mA switch. No opto-isolator is needed for regulation. The part samples the output voltage from the isolated flyback waveform appearing across a third winding on the transformer. Quasi-resonant boundary mode

operation improves load regulation, reduces transformer size, and maintains high efficiency. The LT8315 is available in a thermally enhanced 20-pin TSSOP package with four pins removed for high voltage spacing.

The LT8315 data sheet gives a complete description of the part, operation and application information. The data sheet must be read in conjunction with this quick start guide for demo circuit 2337A.

Design files for this circuit board are available at <http://www.linear.com/demo/DC2337A>

LT, LT, LTC, LTM, Linear Technology and the Linear Logo are registered trademarks of Linear Technology Corporation. All other trademarks are the property of their respective owners.

PERFORMANCE SUMMARY Specifications are at $T_A = 25^\circ\text{C}$

PARAMETER	CONDITIONS	MIN	TYP	MAX	UNITS
Input Voltage		90		265	V_{RMS}
Output Voltage	$I_{OUT} = 4\text{mA to } 0.55\text{A}$	11.4	12	12.6	V
Maximum Output Current		0.55			A
Typical Switching Frequency	$V_{IN} = 120\text{VAC}, I_{OUT} = 0.55\text{A}$		65		kHz
	$V_{IN} = 220\text{VAC}, I_{OUT} = 0.55\text{A}$		89		kHz
Efficiency	$V_{IN} = 120\text{VAC}, I_{OUT} = 0.55\text{A}$		85.0		%
	$V_{IN} = 220\text{VAC}, I_{OUT} = 0.55\text{A}$		84.6		%

QUICK START PROCEDURE

IMPORTANT NOTE TO CUSTOMERS:

HIGH VOLTAGES ARE PRESENTED ON THE DEMO CIRCUIT, AND CAN LEAD TO LETHAL INJURIES TO HUMAN BODY. ONLY QUALIFIED PERSONNEL SHOULD OPERATE IT. IT IS STRONGLY RECOMMENDED TO USE SAFETY GLASSES AND AN ISOLATION TRANSFORMER.

NOTE. IMPROPER COMPONENTS REPLACEMENT ON THE DEMO CIRCUIT CAN CAUSE PERFORMANCE DETERIORATIONS, CIRCUIT MALFUNCTION, PROPERTY DAMAGE, AND EVEN LIFE-THREATENING INJURIES. CONTACT LINEAR TECHNOLOGY APPLICATIONS ENGINEERS FOR PROPER COMPONENT REPLACEMENT.

Demonstration circuit 2337A is easy to set up to evaluate the performance of the LT8315. Refer to Figure 1 for proper measurement equipment setup and follow the procedure below:

1. With power off, connect the AC input power supply to the board through line and neutral terminals. Connect the load to the terminals V_{OUT}^+ and V_{OUT}^- on the board.
2. Turn on the power at the input. Set the input voltage to 120VAC.

NOTE: Make sure that the input voltage is always within spec. To operate the board with higher input/output voltage, input capacitor, output capacitor and output diode with higher voltage ratings are needed.

3. Check for the proper output voltages. The output should be regulated at 12V ($\pm 5\%$).

NOTE: The LT8315 requires very small minimum load to maintain good output voltage regulation. A Zener diode is placed on the output to clamp the voltage to 13V. This Zener can be replaced with a 3000Ω resistor at the trade-off of lower efficiency.

4. Once the proper output voltage is established, adjust the input voltage and load current within the operating range and observe the output voltage regulation, ripple voltage, efficiency and other parameters.

NOTE: When measuring the input or output voltage ripples, care must be taken to avoid a long ground lead on the oscilloscope probe. Measure the output voltage ripple by touching the probe tip directly across the V_{OUT}^+ and V_{OUT}^- terminals.

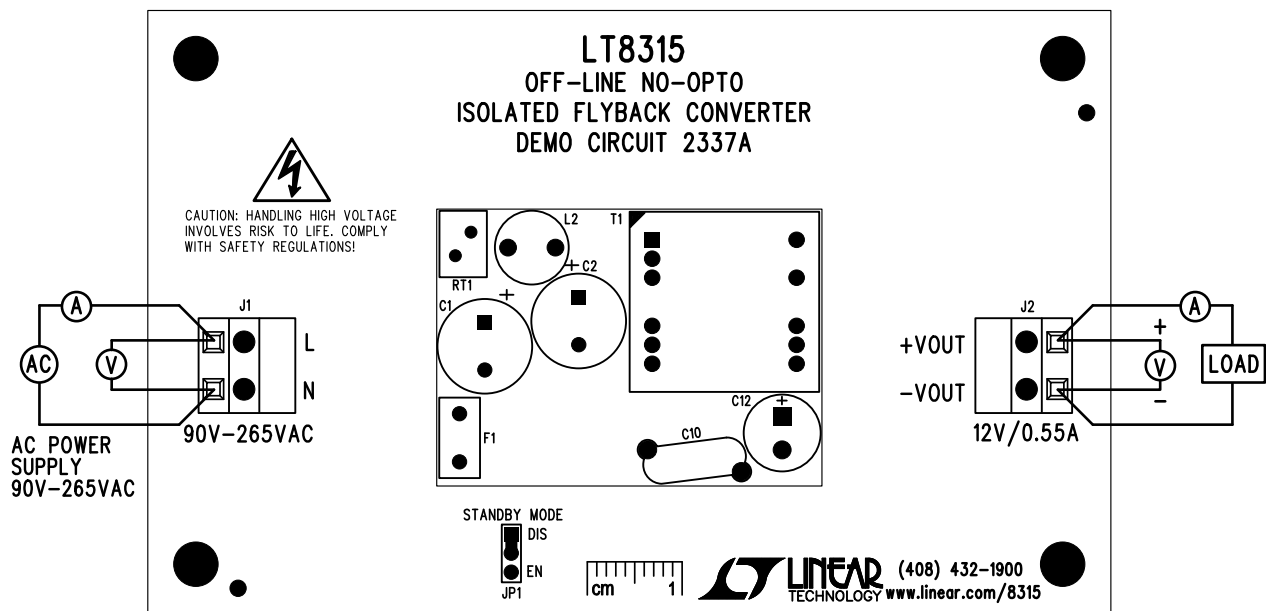


Figure 1. Proper Measurement Equipment Setup

QUICK START PROCEDURE

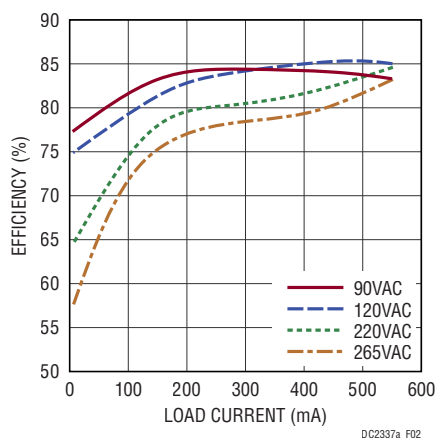


Figure 2. Efficiency vs Load Current

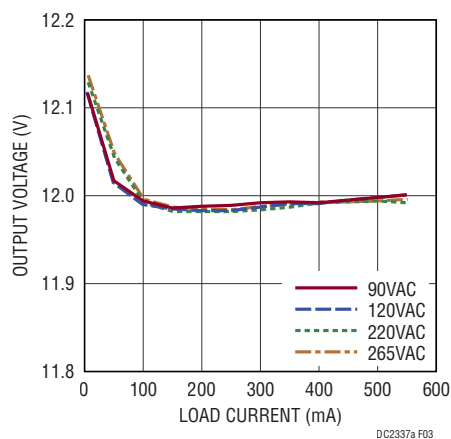


Figure 3. Load and Line Regulation

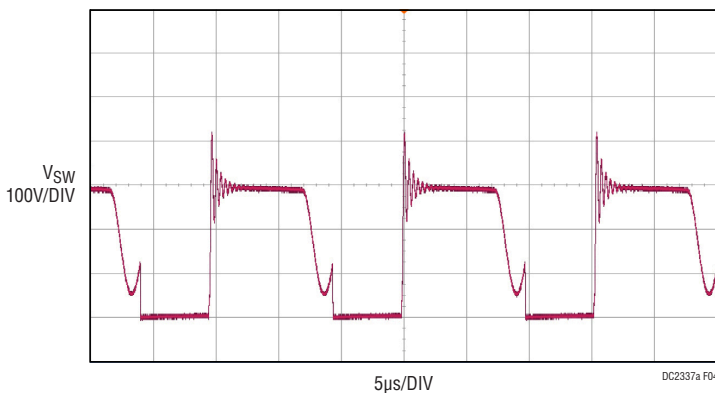


Figure 4. 120VAC Steady State Switch Node Voltage at Full Load Condition

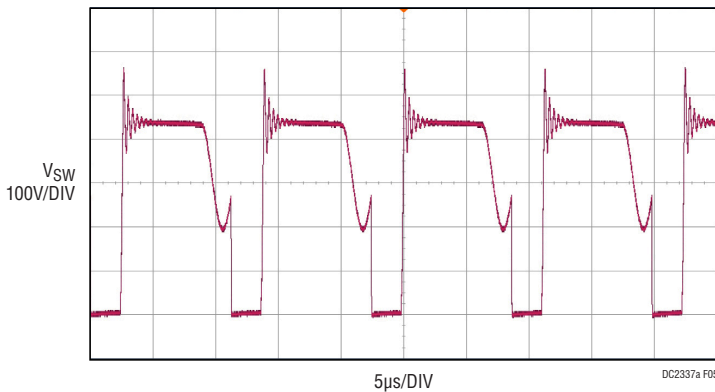


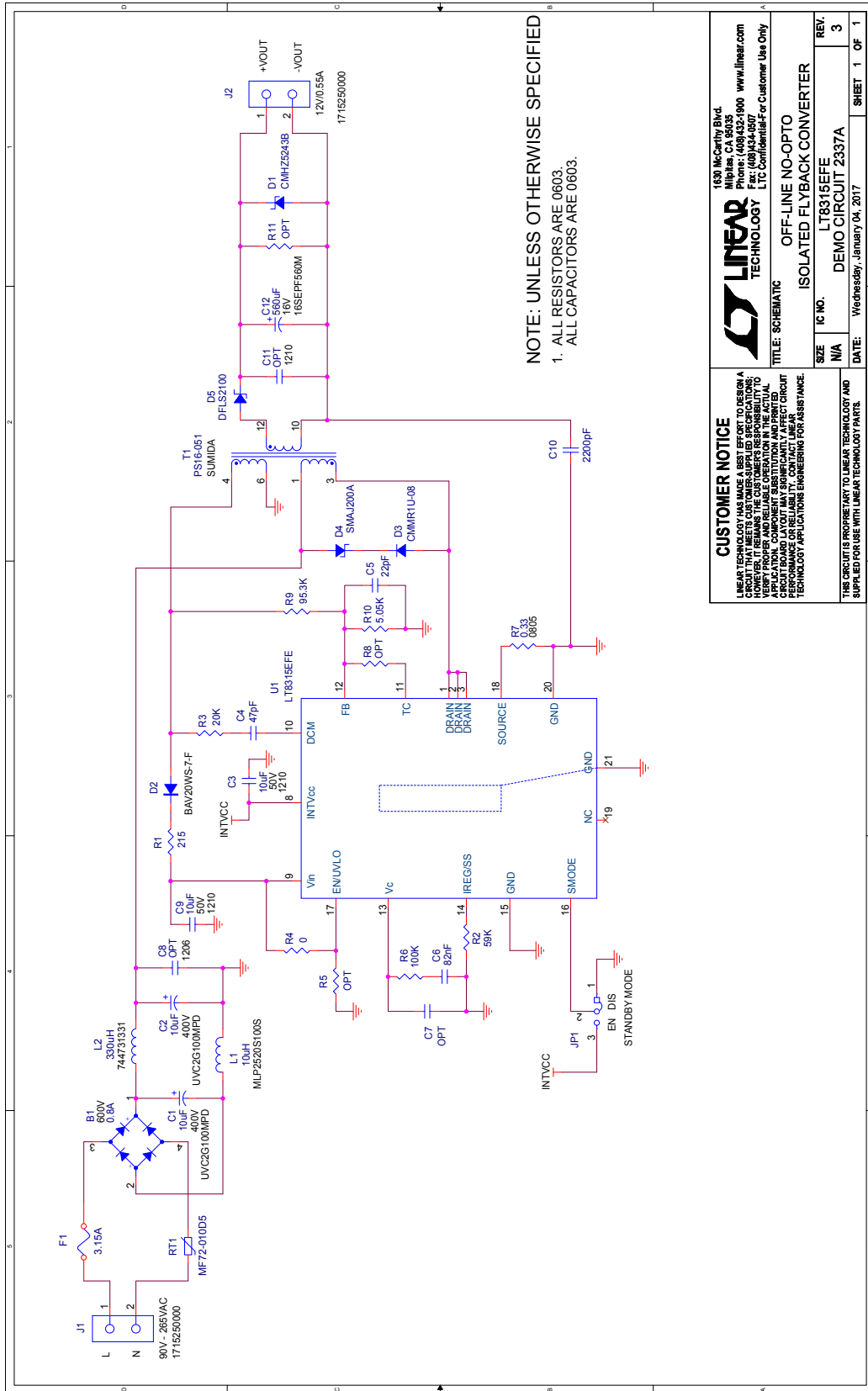
Figure 5. 220VAC Steady State Switch Node Voltage at Full Load Condition

DEMO MANUAL DC2337A

PARTS LIST

ITEM	QTY	REFERENCE	PART DESCRIPTION	MANUFACTURER/PART NUMBER
Required Circuit Components				
1	1	B1	RECTIFIER, BRIDGE GP 600V 0.8A	DIODES INC, HD06-T
2	2	C1, C2	CAP, ALUM, 10 μ F, 400V, 20%	NICHION, UVC2G100MPD
3	2	C3, C9	CAP, X7R, 10 μ F, 50V, 10%, 1210	MURATA, GRJ32EC71H106KE11L
4	1	C4	CAP, NPO, 47pF, 50V, 5%, 0603	AVX, 06035A470JAT2A
5	1	C5	CAP, NPO, 22 μ F, 50V, 5%, 0603	AVX, 06035A220JAT2A
6	1	C6	CAP, X7R, 0.082 μ F, 25V, 10%, 0603	MURATA, GRM188R71E823KA01D
7	1	C10	CAP, Y5U 2200pF 500VAC 20%	VISHAY, 440LD22-R
8	1	C12	CAP, ALUM, 560 μ F, 16V, 20%	PANASONIC, 16SEPF560M
9	1	D1	DIODE, ZENER, 13V, SOD123	CENTRAL SEMI, CMHZ5243B
10	1	D2	DIODE, 150V, SOD323	DIODES INC, BAV20WS-7-F
11	1	D3	DIODE, 800V, SOD123F	CENTRAL SEMI, CMMR1U-08
12	1	D4	DIODE, TVS, SMA	LITTLEFUSE, SMAJ200A
13	1	D5	DIODE, SCHOTTKY, 100V, POWER-DI-123	DIODES INC, DFLS2100-7
14	1	F1	FUSE, 3.15A	EATON BUSSMANN, SS-5H-3.15A
15	1	L1	IND, 10 μ H, 1008	TDK, MLP2520S100S
16	1	L2	IND, 330 μ H	WURTH ELEKTRONIC, 744731331
17	1	RT1	ICL, 10 Ω , 700MA, 20%, 7MM	CANTHERM, MF72-010D5
18	1	R1	RES, CHIP, 215, 1/10W, 1% 0603	VISHAY, CRCW0603215RFKEA
19	1	R2	RES, CHIP, 59k, 1/10W, 1% 0603	VISHAY, CRCW060359K0FKEA
20	1	R3	RES, CHIP, 20k, 1/10W, 1% 0603	VISHAY, CRCW060320K0FKEA
21	1	R4	RES, CHIP, 0 Ω , 1/10W, 1% 0603	VISHAY, CRCW06030000Z0EA
22	1	R6	RES, CHIP, 100k, 1/10W, 1% 0603	VISHAY, CRCW0603100KFKEA
23	1	R7	RES, SENSE, 0.33 Ω , 1/3W, 1% 0805	SUSUMU, RL1220S-R33-F
24	1	R9	RES, CHIP, 95.3k, 1/10W, 1% 0603	VISHAY, CRCW060395K3FKEA
25	1	R10	RES, CHIP, 5.05k, 1/10W, 1% 0603	VISHAY, CRCW06035K05FKEA
26	1	T1	TRANSFORMER	SUMIDA, PS16-051
27	1	U1	IC, LT8315EFE, TSSOP20FE	LINEAR, LT8315EFE#PBF
Additional Demo Board Circuit Components				
1	0	R5, R8, R11	RES, OPTION, 0603	
2	0	C7	CAP, OPTION, 0603	
3	0	C8	CAP, OPTION, 1206	
4	0	C11	CAP, OPTION, 1210	
Hardware: For Demo Board Only				
1	1	XJP1	SHUNT, 0.079" CENTER	SAMTEC, 2SN-BK-G
2	2	J1, J2	CONN, TERM BLOCK, 5MM, 2POS	WEIDMULLER, 1715250000
3	1	JP1	3 PIN 0.079 SINGLE ROW HEADER	SULLINS, NRPN031PAEN-RC

SCHEMATIC DIAGRAM



CUSTOMER NOTICE
 LINEAR TECHNOLOGY CORP. MAKES NO WARRANTY OR REPRESENTATION, EXPRESS OR IMPLIED, THAT THE CIRCUIT LAYOUT OR ANY COMPONENTS OF THIS CIRCUIT MEETS CUSTOMER-SUPPLIED SPECIFICATIONS. HOWEVER, IT REMAINS THE CUSTOMER'S RESPONSIBILITY TO VERIFY THAT THE CIRCUIT LAYOUT AND COMPONENTS MEET THE CUSTOMER'S SPECIFICATIONS FOR THE INTENDED APPLICATION. COMPONENT SUBSTITUTION AND PARTS LIST CHANGES ARE NOT PERMITTED WITHOUT THE WRITTEN APPROVAL OF LINEAR TECHNOLOGY APPLICATION ENGINEERING FOR ASSISTANCE.

LINEAR TECHNOLOGY
 1630 McCarthy Blvd.
 Milpitas, CA 95035
 Phone: (408) 432-1900 www.linear.com
 Fax: (408) 432-1999
 LTC Confidential For Customer Use Only

ISOLATED FLYBACK CONVERTER
 OFF-LINE NO-OPTO

SIZE	IC NO.	REV.
N/A	LT8315EFE	3
DATE:	DEMO CIRCUIT 2337A	
	Wednesday, January 04, 2017	
	SHEET	1 OF 1

DEMO MANUAL DC2337A

DEMONSTRATION BOARD IMPORTANT NOTICE

Linear Technology Corporation (LTC) provides the enclosed product(s) under the following **AS IS** conditions:

This demonstration board (DEMO BOARD) kit being sold or provided by Linear Technology is intended for use for **ENGINEERING DEVELOPMENT OR EVALUATION PURPOSES ONLY** and is not provided by LTC for commercial use. As such, the DEMO BOARD herein may not be complete in terms of required design-, marketing-, and/or manufacturing-related protective considerations, including but not limited to product safety measures typically found in finished commercial goods. As a prototype, this product does not fall within the scope of the European Union directive on electromagnetic compatibility and therefore may or may not meet the technical requirements of the directive, or other regulations.

If this evaluation kit does not meet the specifications recited in the DEMO BOARD manual the kit may be returned within 30 days from the date of delivery for a full refund. **THE FOREGOING WARRANTY IS THE EXCLUSIVE WARRANTY MADE BY THE SELLER TO BUYER AND IS IN LIEU OF ALL OTHER WARRANTIES, EXPRESSED, IMPLIED, OR STATUTORY, INCLUDING ANY WARRANTY OF MERCHANTABILITY OR FITNESS FOR ANY PARTICULAR PURPOSE. EXCEPT TO THE EXTENT OF THIS INDEMNITY, NEITHER PARTY SHALL BE LIABLE TO THE OTHER FOR ANY INDIRECT, SPECIAL, INCIDENTAL, OR CONSEQUENTIAL DAMAGES.**

The user assumes all responsibility and liability for proper and safe handling of the goods. Further, the user releases LTC from all claims arising from the handling or use of the goods. Due to the open construction of the product, it is the user's responsibility to take any and all appropriate precautions with regard to electrostatic discharge. Also be aware that the products herein may not be regulatory compliant or agency certified (FCC, UL, CE, etc.).

No License is granted under any patent right or other intellectual property whatsoever. **LTC assumes no liability for applications assistance, customer product design, software performance, or infringement of patents or any other intellectual property rights of any kind.**

LTC currently services a variety of customers for products around the world, and therefore this transaction **is not exclusive**.

Please read the DEMO BOARD manual prior to handling the product. Persons handling this product must have electronics training and observe good laboratory practice standards. **Common sense is encouraged.**

This notice contains important safety information about temperatures and voltages. For further safety concerns, please contact a LTC application engineer.

Mailing Address:

Linear Technology
1630 McCarthy Blvd.
Milpitas, CA 95035

Copyright © 2004, Linear Technology Corporation

X-ON Electronics

Largest Supplier of Electrical and Electronic Components

Click to view similar products for [Power Management IC Development Tools](#) category:

Click to view products by [Analog Devices](#) manufacturer:

Other Similar products are found below :

[EVAL-ADM1168LQEBZ](#) [EVB-EP5348UI](#) [MIC23451-AAAYFL EV](#) [MIC5281YMME EV](#) [DA9063-EVAL](#) [ADP122-3.3-EVALZ](#) [ADP130-0.8-EVALZ](#) [ADP130-1.2-EVALZ](#) [ADP130-1.5-EVALZ](#) [ADP130-1.8-EVALZ](#) [ADP1714-3.3-EVALZ](#) [ADP1716-2.5-EVALZ](#) [ADP1740-1.5-EVALZ](#) [ADP1752-1.5-EVALZ](#) [ADP1828LC-EVALZ](#) [ADP1870-0.3-EVALZ](#) [ADP1871-0.6-EVALZ](#) [ADP1873-0.6-EVALZ](#) [ADP1874-0.3-EVALZ](#) [ADP1882-1.0-EVALZ](#) [ADP199CB-EVALZ](#) [ADP2102-1.25-EVALZ](#) [ADP2102-1.875EVALZ](#) [ADP2102-1.8-EVALZ](#) [ADP2102-2-EVALZ](#) [ADP2102-3-EVALZ](#) [ADP2102-4-EVALZ](#) [ADP2106-1.8-EVALZ](#) [ADP2147CB-110EVALZ](#) [AS3606-DB](#) [BQ24010EVM](#) [BQ24075TEVM](#) [BQ24155EVM](#) [BQ24157EVM-697](#) [BQ24160EVM-742](#) [BQ24296MEVM-655](#) [BQ25010EVM](#) [BQ3055EVM](#) [NCV891330PD50GEVB](#) [ISLUSBI2CKIT1Z](#) [LM2744EVAL](#) [LM2854EVAL](#) [LM3658SD-AEV/NOPB](#) [LM3658SDEV/NOPB](#) [LM3691TL-1.8EV/NOPB](#) [LM4510SDEV/NOPB](#) [LM5033SD-EVAL](#) [LP38512TS-1.8EV](#) [EVAL-ADM1186-1MBZ](#) [EVAL-ADM1186-2MBZ](#)