

LTM4636 High Efficiency, PolyPhase 160A Step-Down Power μ Module Regulator

DESCRIPTION

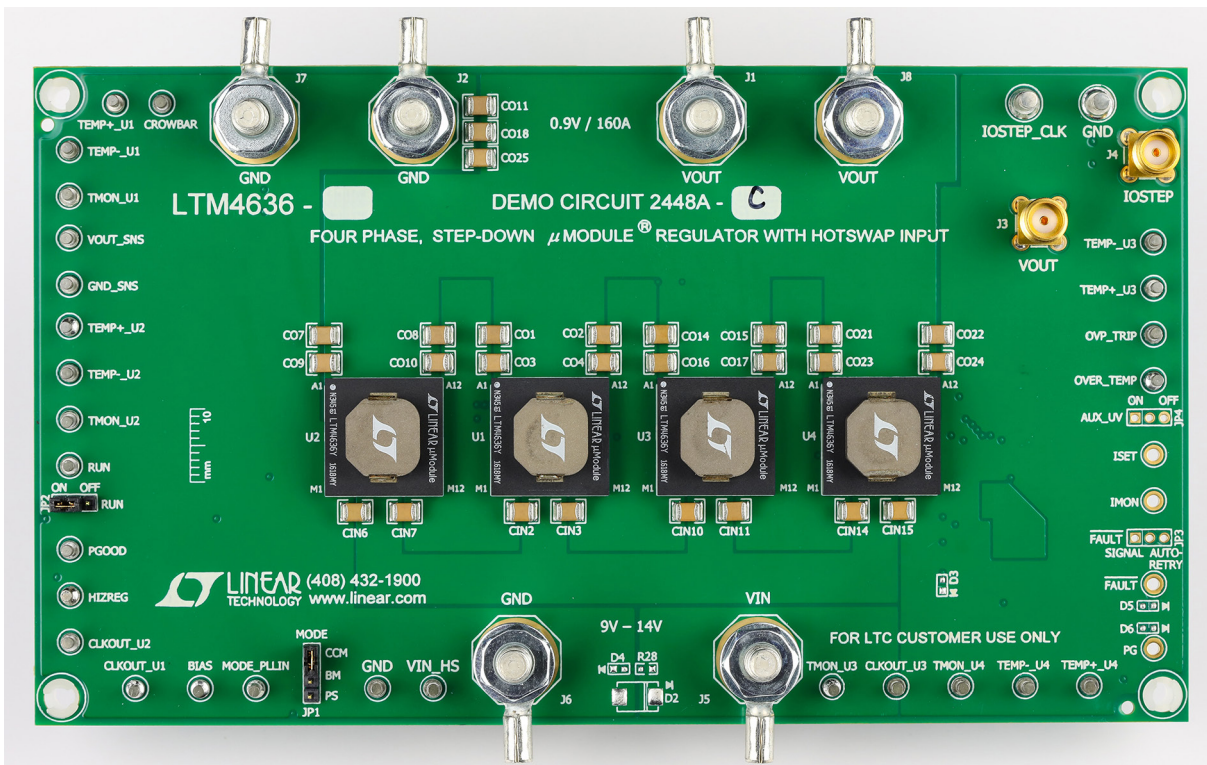
Demonstration circuit DC2448A-C features a PolyPhase® design using the LTM®4636EY, a 40A high efficiency, switch mode step-down power μ Module® regulator. The input voltage range is from 4.7V to 15V. When $V_{IN} < 5.5V$, short PVCC to V_{IN} with $R1 = 0\Omega$, and set $R3 = 0\Omega$ and remove $R2$. The output voltage range is 0.6V to 3.3V. The DC2448A-C can deliver a nominal 160A output current. As explained in the data sheet, output current derating is necessary for certain V_{IN} , V_{OUT} and thermal conditions. The board operates in continuous conduction mode in heavy load conditions. For high efficiency at low load currents, the MODE_PLLIN jumper selects

pulse-skipping mode for noise sensitive applications or Burst Mode® operation in less noise sensitive applications. The MODE_PLLIN pin also allows the LTM4636 to synchronize to an external clock signal. The phases of the four LTM4636s are 0 degree, 90 degree, 180 degree and 270 degree. DC2448A-C has the option of choosing both internal and external compensation circuit for LTM4636. The LTM4636 datasheet must be read in conjunction with this demo manual prior to working on or modifying demo circuit DC2448A-C.

Design files for this circuit board are available.

All registered trademarks and trademarks are the property of their respective owners.

BOARD PHOTO



DEMO MANUAL

DC2448A-C

PERFORMANCE SUMMARY Specifications are at $T_A = 25^\circ\text{C}$

PARAMETER	CONDITIONS	VALUE
Input Voltage Range		4.7V to 15V
Output Voltages		$0.9V \pm 1.3\%$
Maximum Continuous Output Current	Derating is necessary for certain operating conditions. See data sheet for details.	$160A_{DC}$
Operating Frequency		350kHz
Efficiency	$V_{IN} = 12V, V_{OUT} = 0.9V, I_{OUT} = 160A$	86.1% Figure 2
Load Transient $V_{OUT(P-P)}$	$V_{IN} = 12V, V_{OUT} = 0.9V, I_{STEP} = 0A \text{ TO } 40A$	91mV Figure 3

QUICK START PROCEDURE

Demonstration circuit DC2448A-C is an easy way to evaluate the performance of PolyPhase operation of the LTM4636EY. Due to the high input/output current, the user should select the proper input supply/load/cable which can sustain the full load operation. Please refer to Figure 1 for proper measurement equipment setup and follow the procedure below:

1. Place jumpers in the following positions for a typical application:

MODE	RUN
CCM	ON

2. With power off, connect the input power supply, load and meters as shown in Figure 1. Preset the load to 0A and V_{IN} supply to 12V.
3. Turn on the power supply at the input. The output voltage should be $0.9V \pm 1.3\%$ (0.888V to 0.912V).

4. Vary the input voltage from 6V to 15V and adjust the load current from 0A to 160A. Observe the output voltage regulation, ripple voltage, efficiency and other parameters.
5. (Optional) For optional load transient test, apply an adjustable pulse signal between IOSTEP_CLK and GND test points. The pulse amplitude sets the load step current amplitude. Keep the pulse width short (<1ms) and pulse duty cycle low (<5%) to limit the thermal stress on the load transient circuit.
6. (Optional) LTM4636 can be synchronized to an external clock signal. Apply a clock signal (0V to 5V, square wave) on the MODE_PLLIN test point.
7. (Optional) The outputs of LTM4636 can track another supply. The output voltage tracks the voltage on TRACK when a valid signal is applied on the test point.

QUICK START PROCEDURE

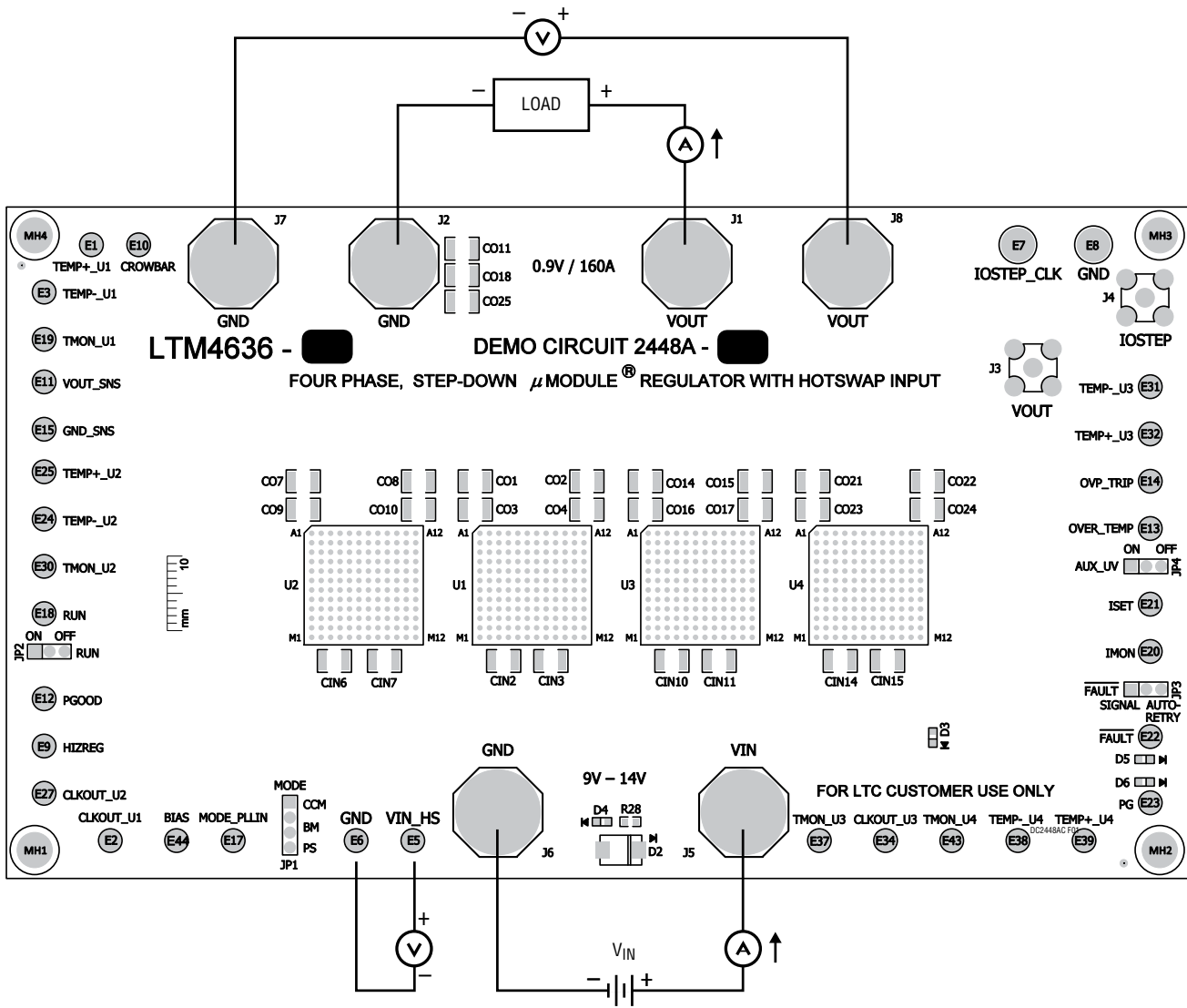


Figure 1. Measurement Setup of DC2448A-C

QUICK START PROCEDURE

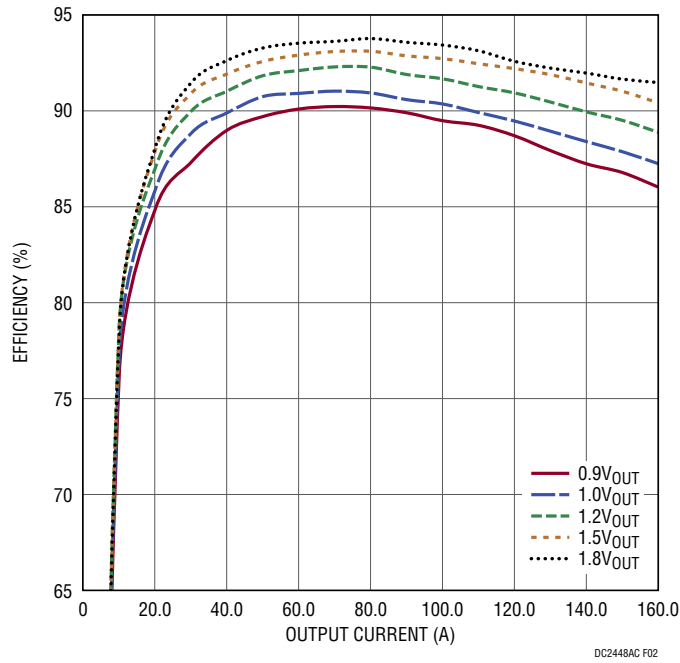


Figure 2. Measured Efficiency at $V_{IN} = 12V$, $f_{SW} = 350kHz$, CCM

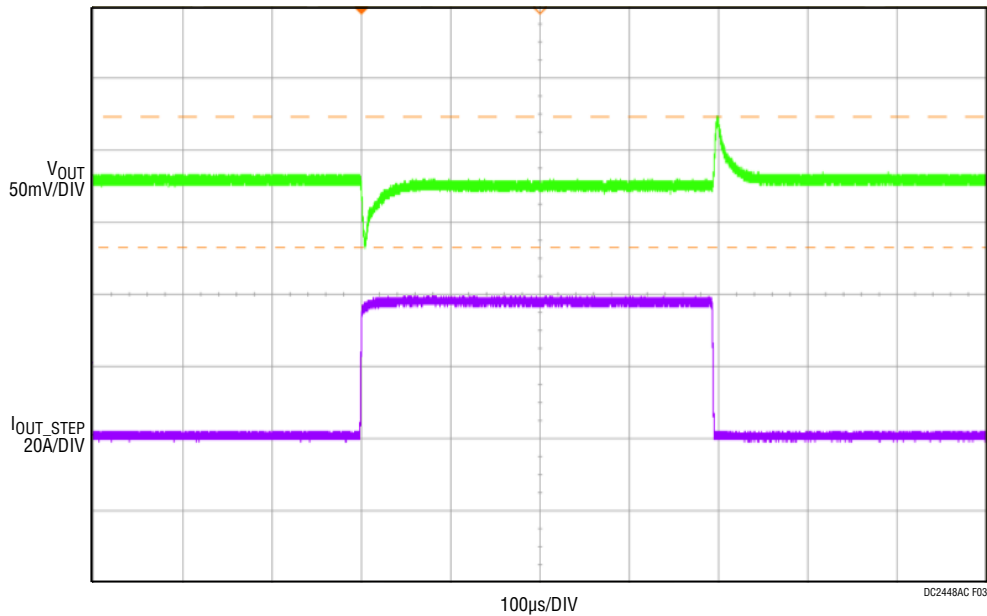


Figure 3. Measured Load Transient
 $V_{IN} = 12V$, $V_{OUT} = 0.9V$, $I_{STEP} = 0A$ to $40A$

QUICK START PROCEDURE

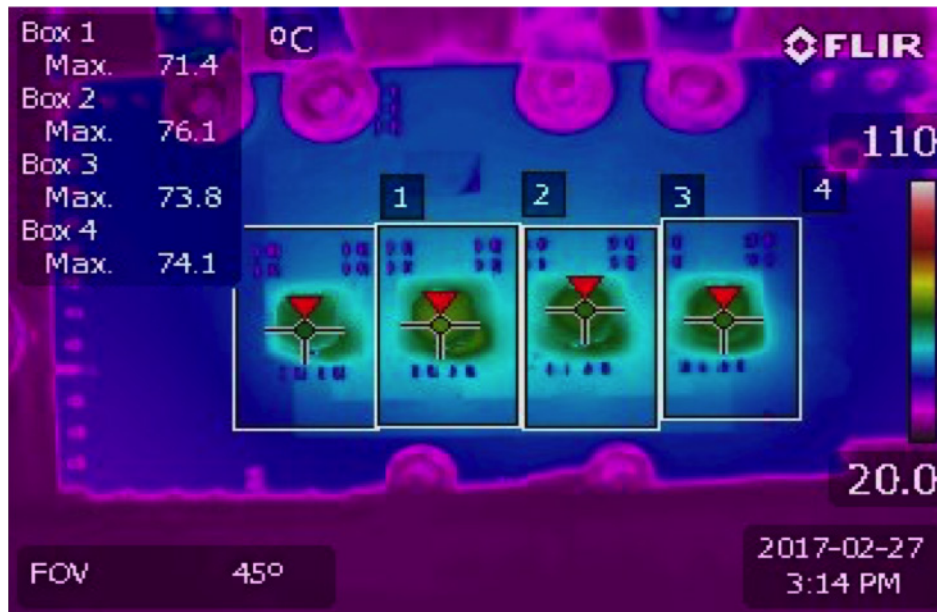


Figure 4. Thermal Capture at $V_{IN} = 12V$, $V_{OUT} = 0.9V$, 160A ($T_A = 25^{\circ}C$, 400LFM Airflow and No Heat Sink)

PARTS LIST

ITEM	QTY	REFERENCE	PART DESCRIPTION	MANUFACTURER/PART NUMBER
Required Circuit Components				
1	4	C1, C14, C19, C24	CAP, 22 μ F, X7R, 10V, 10%, 1206	MURATA, GRM31CR71A226KE15L
2	4	C2, C15, C20, C25	CAP, 4.7 μ F, X5R, 25V, 20%, 0805	MURATA, GRM21BR61E475MA12L
3	1	C8	CAP, 100pF, X7R, 50V, 10%, 0603	AVX, 06035C101KAT2A
4	2	C9, C10	CAP, 0.47 μ F, X7R, 10V, 10%, 0603	AVX, 0603ZC474KAT2A MURATA, GRM188R71A474KA61D
5	2	C29, C30	CAP, 10 μ F, X5R, 6.3V, 10%, 0805	MURATA, GRM21BR60J106KE19L
6	21	C31, C32, C01, C02, C03, C04, C07, C08, C09, C010, C011, C014, C015, C016, C017, C018, C021, C022, C023, C024, C025	CAP, 100 μ F, X5R, 6.3V, 20%, 1210	MURATA, GRM32ER60J107ME20L
7	1	CIN1	CAP, 150 μ F, ALUM., 35V, 20%, 10x10.5mm, SMD, HVH Series	SUN ELECTRONIC INDUSTRIES CORP, 35HVH150M
8	16	CIN2, CIN3, CIN4, CIN5, CIN6, CIN7, CIN8, CIN9, CIN10, CIN11, CIN12, CIN13, CIN14, CIN15, CIN16, CIN17	CAP, 22 μ F, X5R, 25V, 10%, 1210	AVX, 12103D226KAT2A MURATA, GRM32ER61E226KE15L
9	8	C05, C06, C012, C013, C019, C020, C026, C027	CAP, 470 μ F, TANT POLY., 4V, 20%, 7343, D3L	PANASONIC, 4TPE470MCL

DEMO MANUAL

DC2448A-C

PARTS LIST

ITEM	QTY	REFERENCE	PART DESCRIPTION	MANUFACTURER/PART NUMBER
10	1	R14	RES., 10k, 1%, 1/10W, 0603	KOA SPEER, RK73H1JTTD1002F PANASONIC, ERJ3EKF1002V VISHAY, CRCW060310K0FKEA
11	1	R20	RES., 4.99k, 1%, 1/10W, 0603	NIC, NRC06F4991TRF VISHAY, CRCW06034K99FKEA
12	4	R22, R51, R60, R70	RES., 34.8k, 1%, 1/10W, 0603	VISHAY, CRCW060334K8FKEA YAGEO, RC0603FR-0734K8L
13	3	U1, U2, U3, U4	IC, HIGH EFFICIENCY 40A μ MODULE	ANALOG DEVICES, LTM4636EY#PBF

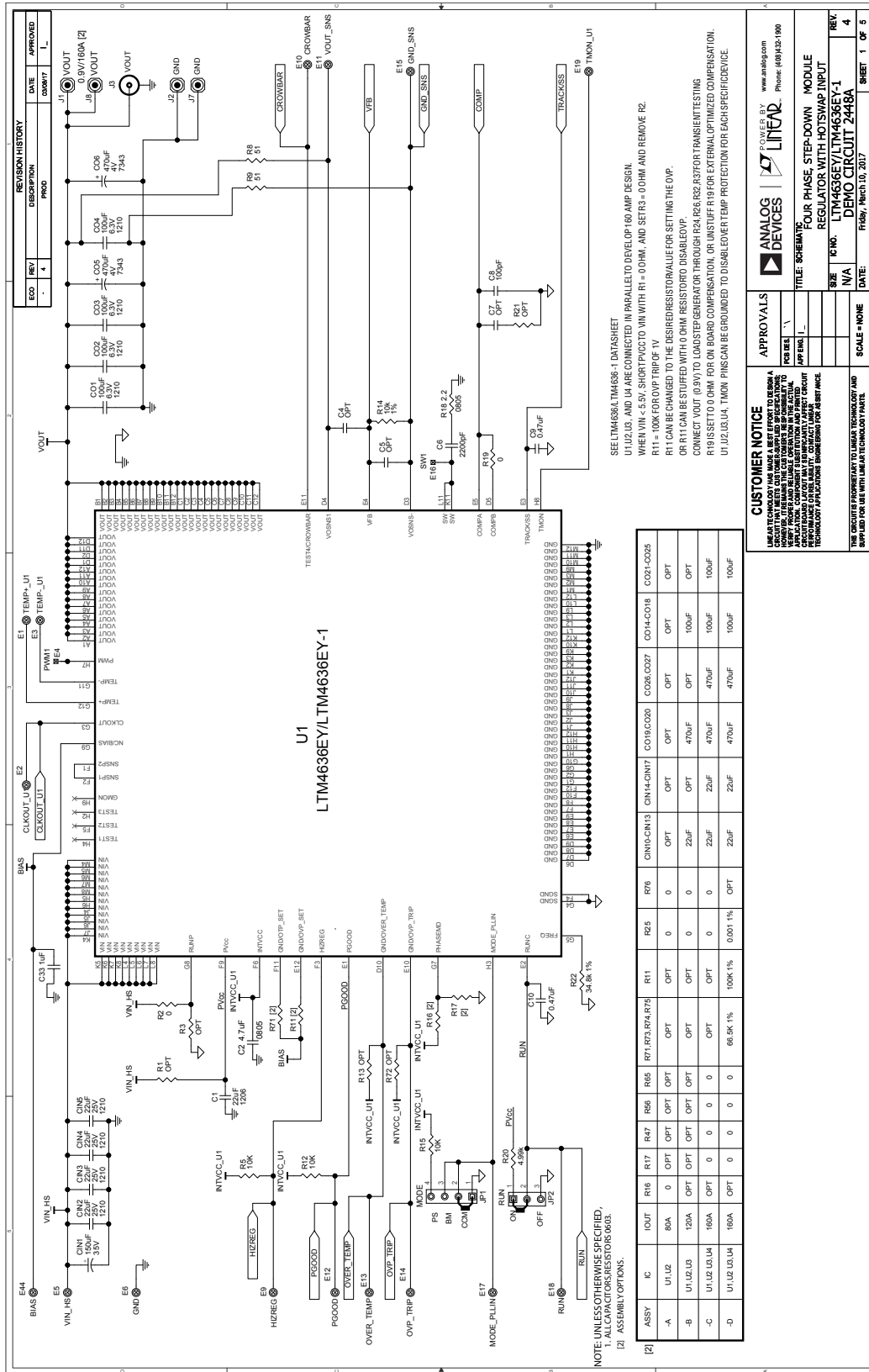
Additional Demo Board Circuit Components

1	4	C6, C17, C22, C27	CAP, 2200pF, X7R, 50V, 10%, 0603	AVX, 06035C222KAT2A
2	1	C33	CAP, 1 μ F, X7R, 16V, 10%, 0603	AVX, 0603YC105KAT2A NIC, NMC0603X7R105K16TRPF TDK, C1608X7R1C105K080AC
3	1	Q3	XSTR., MOSFET, N-CH, 40V, TO-252	VISHAY, SUD50N04-8M8P-4GE3
4	13	R2, R17, R19, R45, R47, R50, R54, R56, R59, R62, R65, R68, R69	RES., 0 Ω , 1/10W, 0603	NIC, NRC06ZOTRF VISHAY, CRCW06030000Z0EA
5	4	R4, R5, R12, R15	RES., 10k, 5%, 1/10W, 0603, AEC-Q200	PANASONIC, ERJ3GEYJ103V VISHAY, CRCW060310K0JNEA
6	1	R7	RES., 0.01 Ω , 1%, 1W, 2010, HIGH POWER	VISHAY, WSL2010R0100FEA18
7	2	R8, R9	RES., 51 Ω , 5%, 1/10W, 0603	VISHAY, CRCW060351R0JNEA
8	4	R18, R49, R58, R67	RES., 2.2 Ω , 5%, 1/8W, 0805, AEC-Q200	VISHAY, CRCW08052R20JNEA
9	4	R24, R26, R32, R37	RES., 0 Ω , 3/4W, 2010, AEC-Q200	VISHAY, CRCW20100000Z0EF
10	1	R25	RES., 0 Ω , 1W, 2512, SENSE	VISHAY, WSL25120000ZEA9
11	1	R76	RES., 0 Ω , 1W, 2010, SENSE, AEC-Q200	VISHAY, WSL20100000ZEA9

Hardware: For Demo Board Only

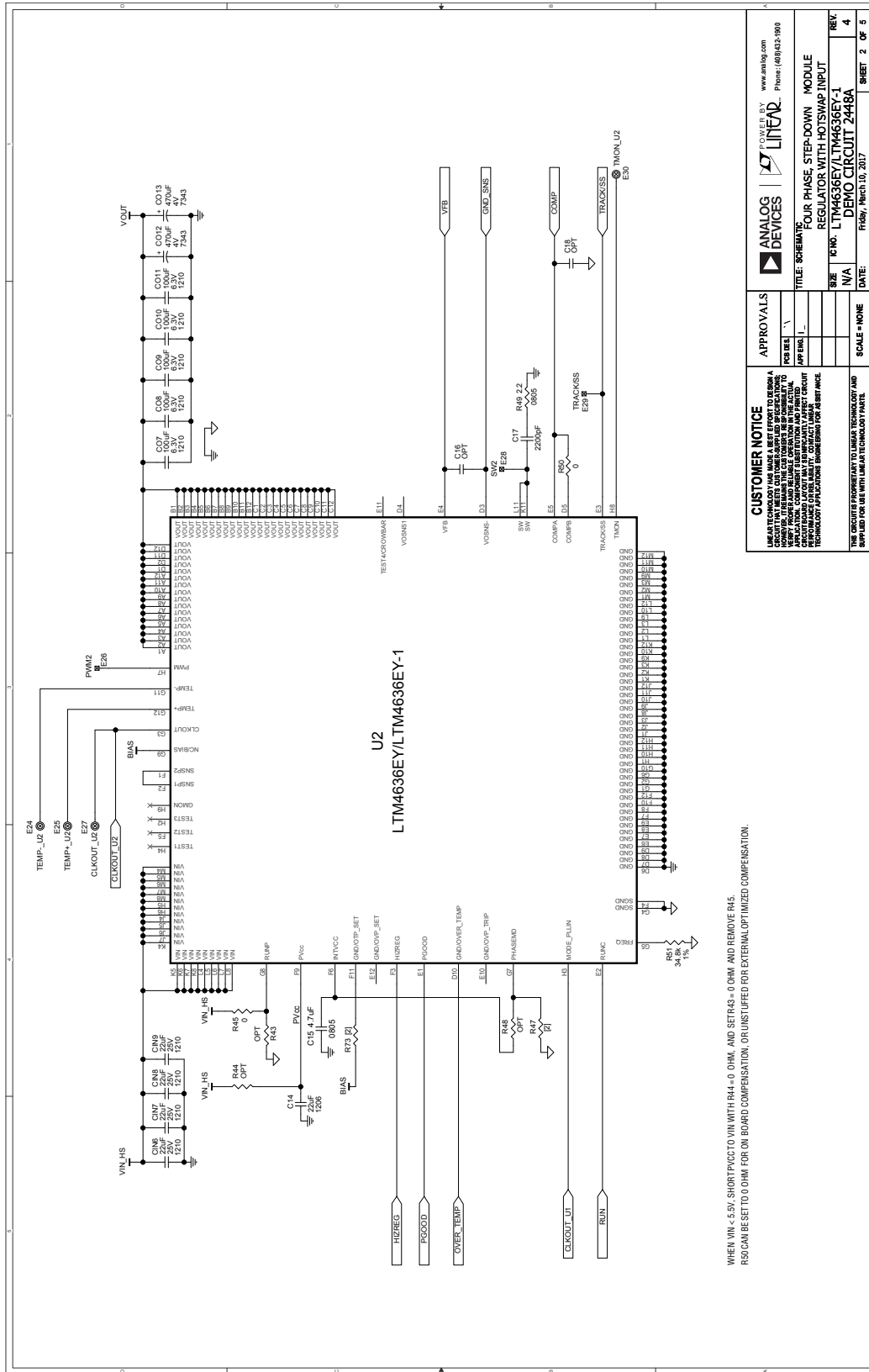
1	27	E1, E2, E3, E5, E6, E9, E10, E11, E12, E13, E14, E15, E17, E18, E19, E24, E25, E27, E30, E31, E32, E34, E37, E38, E39, E43, E44	TEST POINT, TURRET, 0.064", MTG. HOLE	MILL-MAX, 2308-2-00-80-00-00-07-0
2	2	E7, E8	TEST POINT, TURRET, 0.094", MTG. HOLE	MILL-MAX, 2501-2-00-80-00-00-07-0
3	6	J1, J2, J5, J6, J7, J8	WASHER, FLAT, STEEL, ZINC PLATE, OD: 0.436 [11.1]	KEYSTONE, 4703
4	6	J1, J2, J5, J6, J7, J8	RING, LUG, CRIMP, #10, NON-INSULATED, SOLDERLESS TERMINALS	KEYSTONE, 8205
5	6	J1, J2, J5, J6, J7, J8	STUD, FASTENER, #10-32	PENNINGENGINEERING, KFH-032-10ET
6	6	J1, J2, J5, J6, J7, J8	NUT, HEX, STEEL, ZINC PLATE, 10-32	KEYSTONE, 4705
7	2	J3, J4	CONN., SMA RF COAX, PCB JACK RCPT, THT, STR	MOLEX, 73391-0060
8	1	JP1	CONN., HDR., MALE, 1x4, 2mm, THT, STR	SAMTEC, TMM-104-02-L-S
9	1	JP2	CONN., HDR., MALE, 1x3, 2mm, THT, STR	SAMTEC, TMM-103-02-L-S
10	4	MH1, MH2, MH3, MH4	STANDOFF, NYLON, SNAP-ON, 0.250"	KEYSTONE, 8831 WURTH ELEKTRONIK, 702931000
11	2	XJP1, XJP2	CONN., SHUNT, FEMALE, 2 POS, 2mm	SAMTEC, 2SN-BK-G

SCHEMATIC DIAGRAM



DEMO MANUAL DC2448A-C

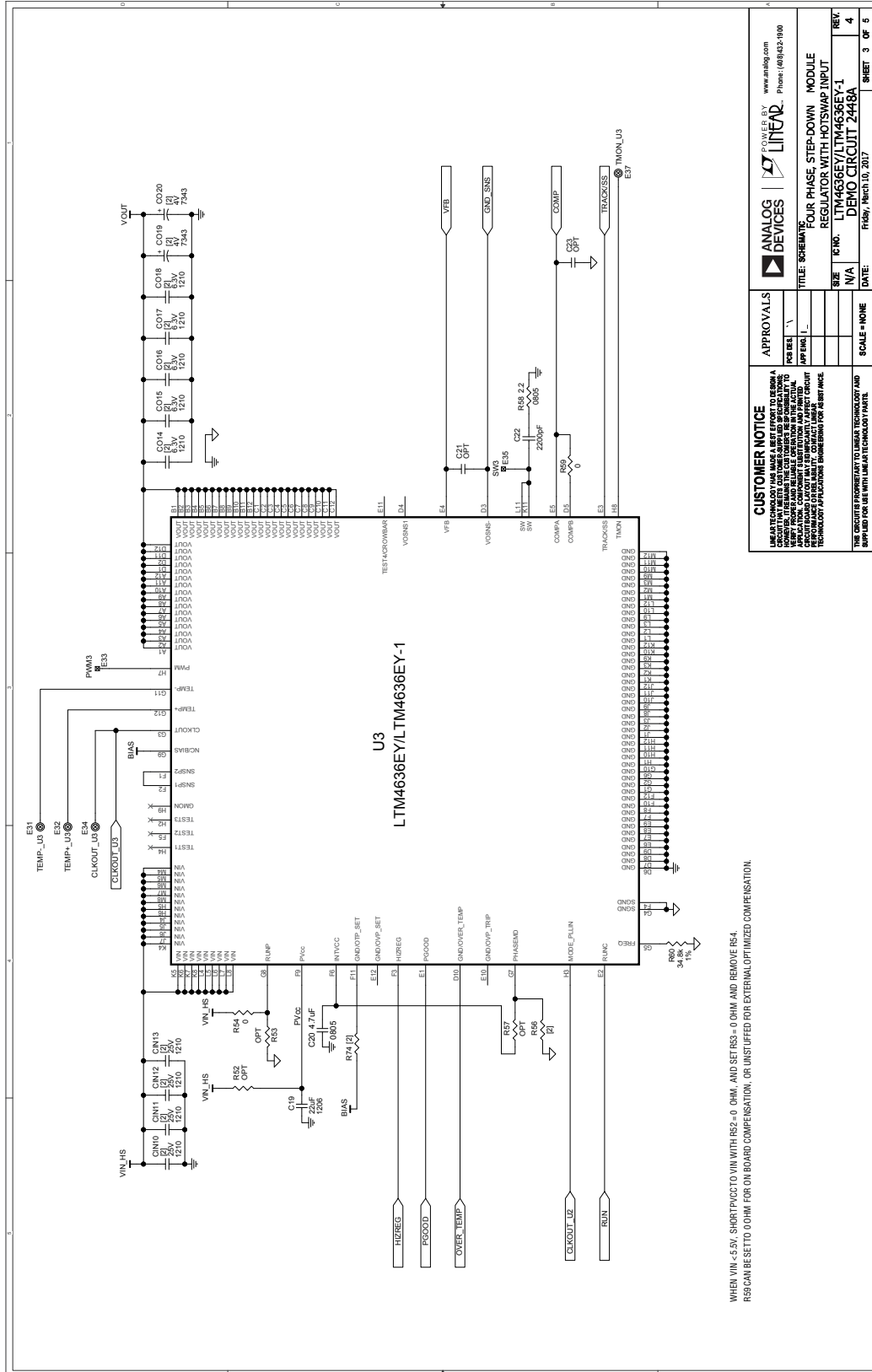
SCHEMATIC DIAGRAM



WHEN VIN < 5.5V, SHORT PFCCTO VIN WITH R44 = 0 OHM, AND SETR43 = 0 OHM AND REMOVE R45.
R50 CAN BE SET TO 0 OHM FOR ON BOARD COMPENSATION, OR UNSTUFFED FOR EXTERNAL OPTIMIZED COMPENSATION.

CUSTOMER NOTICE LINEAR TECHNOLOGY HAS MADE A BEST EFFORT TO DESIGN A DEMO BOARD FOR THE LTM4636EY/LTM4636EY-1 TO DEMONSTRATE THE LTM4636EY/LTM4636EY-1'S PERFORMANCE IN A SPECIFIC APPLICATION. COMPONENT SELECTION AND PRINTED CIRCUIT BOARD DESIGN ARE NOT GUARANTEED TO REPRESENT THE PERFORMANCE OF THE LTM4636EY/LTM4636EY-1 IN ALL APPLICATIONS. CONTACT LINEAR TECHNOLOGY FOR TECHNICAL SUPPORT OR FOR BOARD SERVICE.	
APPROVALS PCB DES: _____ APP ENG: _____	POWERED BY LINEAR ANALOG DEVICES www.analog.com Phone: (408)432-1980
TITLE SCHEMATIC FOUR PHASE, STEP-DOWN REGULATOR WITH HOTSWAP INPUT	DATE: March 10, 2017
SCALE: NONE	REV: 4 SHEET: 2 OF 5

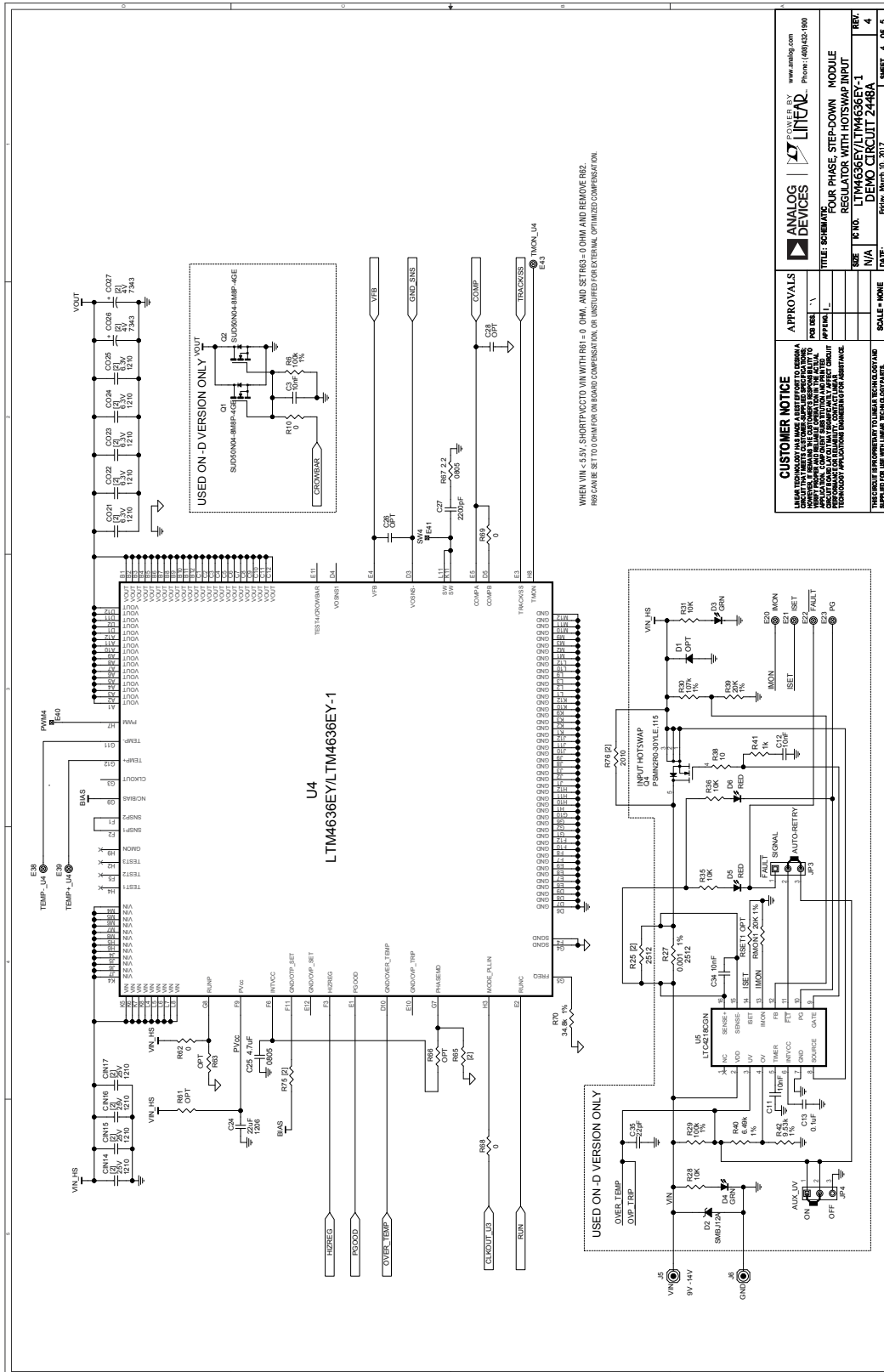
SCHEMATIC DIAGRAM



WHEN VIN < 5.5V, SHORT PVCC TO VIN WITH RS2 = 0 OHM, AND SET RS3 = 0 OHM AND REMOVE RS4.
RS9 CAN BE SET TO 0 OHM FOR ON BOARD COMPENSATION, OR UNLIFTED FOR EXTERNAL OPTIMIZED COMPENSATION.

DEMO MANUAL DC2448A-C

SCHEMATIC DIAGRAM

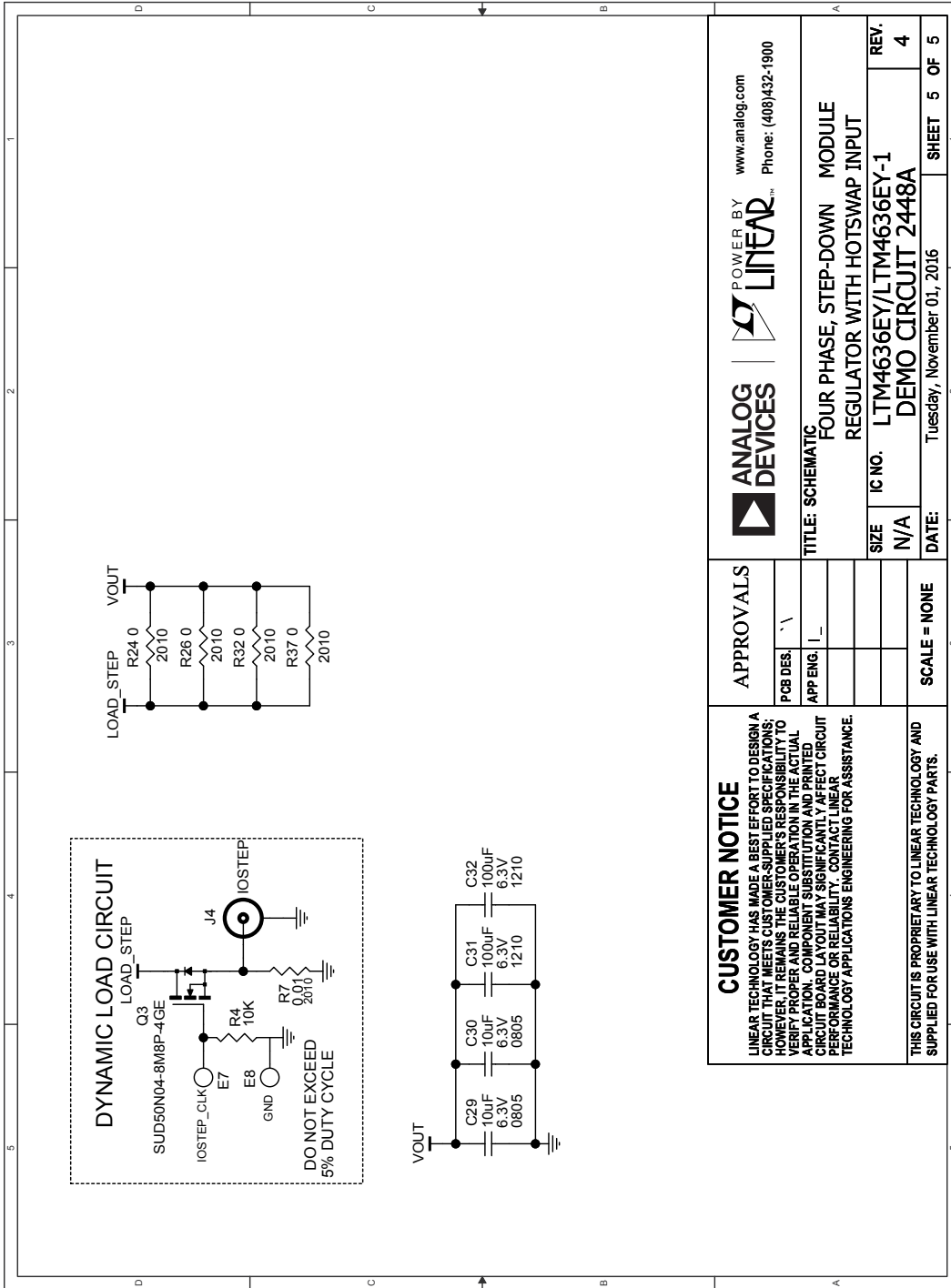


ANALOG DEVICES LINEAR POWER BY www.analog.com Phone: (408)435-1000	
TITLE: SCHEMATIC FOUR PHASE STEP-DOWN MODULE REGULATOR WITH HOTSWAP INPUT	
REV: 4	REV: 4
DATE:	DATE:
SCALE: NONE	SHEET: 4 OF 5

CUSTOMER NOTICE
 LINEAR TECHNOLOGY AND ITS DESIGNERS MAKE A BEST EFFORT TO DESIGN AND MANUFACTURE PRODUCTS THAT MEET THE SPECIFICATIONS AND REQUIREMENTS OF THE CUSTOMER. HOWEVER, CUSTOMERS ARE RESPONSIBLE FOR THE PROPER DESIGN AND APPLICATION OF THE PRODUCTS. CUSTOMERS ARE ADVISED THAT THE PRODUCTS ARE PROVIDED AS IS, WITHOUT WARRANTY OF ANY KIND, INCLUDING MERCHANTABILITY AND FITNESS FOR A PARTICULAR PURPOSE. CUSTOMERS ARE ADVISED THAT THE PRODUCTS ARE PROVIDED AS IS, WITHOUT WARRANTY OF ANY KIND, INCLUDING MERCHANTABILITY AND FITNESS FOR A PARTICULAR PURPOSE.

THIS SHEET IS UNCLASSIFIED AND IS NOT CONTROLLED. IT IS THE PROPERTY OF LINEAR TECHNOLOGY AND IS LOANED TO YOU BY LINEAR TECHNOLOGY. IT IS NOT TO BE REPRODUCED OR TRANSMITTED IN ANY FORM OR BY ANY MEANS, ELECTRONIC OR MECHANICAL, INCLUDING PHOTOCOPYING, RECORDING, OR BY ANY INFORMATION STORAGE AND RETRIEVAL SYSTEM, WITHOUT THE WRITTEN PERMISSION OF LINEAR TECHNOLOGY.

SCHEMATIC DIAGRAM



ANALOG DEVICES		POWER BY LINEAR		www.analog.com Phone: (408)432-1900	
TITLE: SCHEMATIC					
FOUR PHASE, STEP-DOWN MODULE REGULATOR WITH HOTSWAP INPUT					
SIZE	N/A	IC NO.	LTM4636EY/LTM4636EY-1	REV.	4
DATE:	Tuesday, November 01, 2016	DEMO CIRCUIT 2448A		SHEET	5 OF 5
APPROVALS			SCALE = NONE		
PCB DES.					
APP ENG.	I_				
CUSTOMER NOTICE					
LINEAR TECHNOLOGY HAS MADE A BEST EFFORT TO DESIGN A CIRCUIT THAT MEETS CUSTOMER-SUPPLIED SPECIFICATIONS; HOWEVER, IT REMAINS THE CUSTOMER'S RESPONSIBILITY TO VERIFY PROPER AND RELIABLE OPERATION IN THE ACTUAL APPLICATION. COMPONENT SUBSTITUTION AND PRINTED CIRCUIT BOARD LAYOUT MAY SIGNIFICANTLY AFFECT CIRCUIT PERFORMANCE OR RELIABILITY. CONTACT LINEAR TECHNOLOGY APPLICATIONS ENGINEERING FOR ASSISTANCE.					
THIS CIRCUIT IS PROPRIETARY TO LINEAR TECHNOLOGY AND SUPPLIED FOR USE WITH LINEAR TECHNOLOGY PARTS.					



ESD Caution

ESD (electrostatic discharge) sensitive device. Charged devices and circuit boards can discharge without detection. Although this product features patented or proprietary protection circuitry, damage may occur on devices subjected to high energy ESD. Therefore, proper ESD precautions should be taken to avoid performance degradation or loss of functionality.

Legal Terms and Conditions

By using the evaluation board discussed herein (together with any tools, components documentation or support materials, the "Evaluation Board"), you are agreeing to be bound by the terms and conditions set forth below ("Agreement") unless you have purchased the Evaluation Board, in which case the Analog Devices Standard Terms and Conditions of Sale shall govern. Do not use the Evaluation Board until you have read and agreed to the Agreement. Your use of the Evaluation Board shall signify your acceptance of the Agreement. This Agreement is made by and between you ("Customer") and Analog Devices, Inc. ("ADI"), with its principal place of business at One Technology Way, Norwood, MA 02062, USA. Subject to the terms and conditions of the Agreement, ADI hereby grants to Customer a free, limited, personal, temporary, non-exclusive, non-sublicensable, non-transferable license to use the Evaluation Board FOR EVALUATION PURPOSES ONLY. Customer understands and agrees that the Evaluation Board is provided for the sole and exclusive purpose referenced above, and agrees not to use the Evaluation Board for any other purpose. Furthermore, the license granted is expressly made subject to the following additional limitations: Customer shall not (i) rent, lease, display, sell, transfer, assign, sublicense, or distribute the Evaluation Board; and (ii) permit any Third Party to access the Evaluation Board. As used herein, the term "Third Party" includes any entity other than ADI, Customer, their employees, affiliates and in-house consultants. The Evaluation Board is NOT sold to Customer; all rights not expressly granted herein, including ownership of the Evaluation Board, are reserved by ADI. CONFIDENTIALITY. This Agreement and the Evaluation Board shall all be considered the confidential and proprietary information of ADI. Customer may not disclose or transfer any portion of the Evaluation Board to any other party for any reason. Upon discontinuation of use of the Evaluation Board or termination of this Agreement, Customer agrees to promptly return the Evaluation Board to ADI. ADDITIONAL RESTRICTIONS. Customer may not disassemble, decompile or reverse engineer chips on the Evaluation Board. Customer shall inform ADI of any occurred damages or any modifications or alterations it makes to the Evaluation Board, including but not limited to soldering or any other activity that affects the material content of the Evaluation Board. Modifications to the Evaluation Board must comply with applicable law, including but not limited to the RoHS Directive. TERMINATION. ADI may terminate this Agreement at any time upon giving written notice to Customer. Customer agrees to return to ADI the Evaluation Board at that time. LIMITATION OF LIABILITY. THE EVALUATION BOARD PROVIDED HEREUNDER IS PROVIDED "AS IS" AND ADI MAKES NO WARRANTIES OR REPRESENTATIONS OF ANY KIND WITH RESPECT TO IT. ADI SPECIFICALLY DISCLAIMS ANY REPRESENTATIONS, ENDORSEMENTS, GUARANTEES, OR WARRANTIES, EXPRESS OR IMPLIED, RELATED TO THE EVALUATION BOARD INCLUDING, BUT NOT LIMITED TO, THE IMPLIED WARRANTY OF MERCHANTABILITY, TITLE, FITNESS FOR A PARTICULAR PURPOSE OR NON-INFRINGEMENT OF INTELLECTUAL PROPERTY RIGHTS. IN NO EVENT WILL ADI AND ITS LICENSORS BE LIABLE FOR ANY INCIDENTAL, SPECIAL, INDIRECT, OR CONSEQUENTIAL DAMAGES RESULTING FROM CUSTOMER'S POSSESSION OR USE OF THE EVALUATION BOARD, INCLUDING BUT NOT LIMITED TO LOST PROFITS, DELAY COSTS, LABOR COSTS OR LOSS OF GOODWILL. ADI'S TOTAL LIABILITY FROM ANY AND ALL CAUSES SHALL BE LIMITED TO THE AMOUNT OF ONE HUNDRED US DOLLARS (\$100.00). EXPORT. Customer agrees that it will not directly or indirectly export the Evaluation Board to another country, and that it will comply with all applicable United States federal laws and regulations relating to exports. GOVERNING LAW. This Agreement shall be governed by and construed in accordance with the substantive laws of the Commonwealth of Massachusetts (excluding conflict of law rules). Any legal action regarding this Agreement will be heard in the state or federal courts having jurisdiction in Suffolk County, Massachusetts, and Customer hereby submits to the personal jurisdiction and venue of such courts. The United Nations Convention on Contracts for the International Sale of Goods shall not apply to this Agreement and is expressly disclaimed.

X-ON Electronics

Largest Supplier of Electrical and Electronic Components

Click to view similar products for [Power Management IC Development Tools](#) category:

Click to view products by [Analog Devices](#) manufacturer:

Other Similar products are found below :

[EVAL-ADM1168LQEBZ](#) [EVB-EP5348UI](#) [MIC23451-AAAYFL EV](#) [MIC5281YMME EV](#) [DA9063-EVAL](#) [ADP122-3.3-EVALZ](#) [ADP130-0.8-EVALZ](#) [ADP130-1.2-EVALZ](#) [ADP130-1.5-EVALZ](#) [ADP130-1.8-EVALZ](#) [ADP1714-3.3-EVALZ](#) [ADP1716-2.5-EVALZ](#) [ADP1740-1.5-EVALZ](#) [ADP1752-1.5-EVALZ](#) [ADP1828LC-EVALZ](#) [ADP1870-0.3-EVALZ](#) [ADP1871-0.6-EVALZ](#) [ADP1873-0.6-EVALZ](#) [ADP1874-0.3-EVALZ](#) [ADP1882-1.0-EVALZ](#) [ADP199CB-EVALZ](#) [ADP2102-1.25-EVALZ](#) [ADP2102-1.875EVALZ](#) [ADP2102-1.8-EVALZ](#) [ADP2102-2-EVALZ](#) [ADP2102-3-EVALZ](#) [ADP2102-4-EVALZ](#) [ADP2106-1.8-EVALZ](#) [ADP2147CB-110EVALZ](#) [AS3606-DB](#) [BQ24010EVM](#) [BQ24075TEVM](#) [BQ24155EVM](#) [BQ24157EVM-697](#) [BQ24160EVM-742](#) [BQ24296MEVM-655](#) [BQ25010EVM](#) [BQ3055EVM](#) [NCV891330PD50GEVB](#) [ISLUSBI2CKIT1Z](#) [LM2744EVAL](#) [LM2854EVAL](#) [LM3658SD-AEV/NOPB](#) [LM3658SDEV/NOPB](#) [LM3691TL-1.8EV/NOPB](#) [LM4510SDEV/NOPB](#) [LM5033SD-EVAL](#) [LP38512TS-1.8EV](#) [EVAL-ADM1186-1MBZ](#) [EVAL-ADM1186-2MBZ](#)