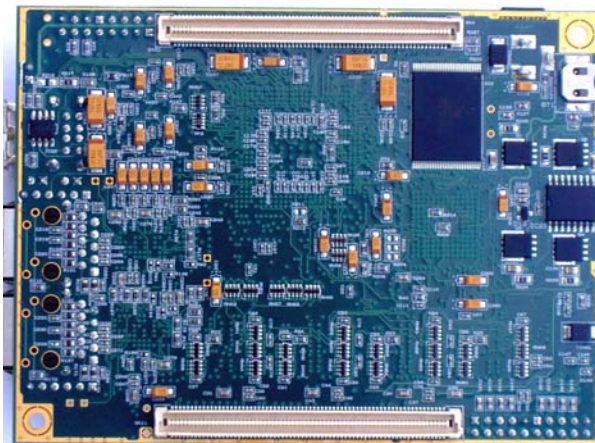


Topside View



Underside View

### Standard Development Module:

The ASP8347 module provides a proven functional unit to for inclusion in OEM products. By embedding the ASP8347, the parent system can utilise the full functionality of the module. Supplied with on-board operating system (eCos and Linux options), IP stack and GNU development tools, the module supports rapid product development, or alternatively the cost-effective module provides an efficient and commercially attractive enhancement to existing products. The 2 on-board gigabit Ethernet ports, and the high speed USB 2.0 ports, lead to a powerful embedded module to meet demanding communication requirements.

The optional motherboard provides a powerful integrated Linux development platform. Available functionality includes 2x USB 2.0 host ports, video port for connection to monitor, keyboard/mouse ports, 2x SATA hard disk ports and a PCI slot. The motherboard runs Fedora Core enabling native PPC development.

Pricing is dependant on volumes. Please contact A&M for quotation. For more information on Analogue & Micro's products and design services, visit the web site or use the contact details listed.

### Custom Embedded Module:

For production volumes, the ASP8347 card can be fully customised to meet application requirements. A range of MPC8347 based cards are available, or a new version can be created as required. Module and motherboard features can be integrated into single module solutions, with OS drivers developed, providing a complete system solution. Each customised derivative is a COTS card, with the same warranty and support status as the existing standard card range.

Contact A&M to discuss the customisation service.

#### Module Specification

DDR RAM	128/256MB, 64-bit wide
Flash	32MB, 16-bit wide
Processor	MPC8347, core speed 266 / 400MHz
Ethernet	2 x 10/100/1000 Ethernet
USB	2 x USB 2.0 ports (host or device)
Serial	2 x RS232 headers
PCI	1 x 32-bit PCI port
Expansion	140 pin port configurable via on-board Lattice FPGA
OS	Linux kernel (2.6.x) and eCos supplied
Dimensions	120mm x 90mm
Temperature	0°C/70°C (-40°C/+85°C available)
Power Supply	Single 3V3 (DC-port, or via expansion port)
Current	Typically 2A @ 3V3
Motherboard Features (optional)	PCI slot, video/keyboard/mouse ports, 2x USB2.0 host ports, Fedora Core, 2x SATA hard disk ports, 2x IDE

Analogue & Micro Ltd  
Lakeside House  
Lakeside  
Cwmbran  
UK, NP44 3XS

Tel: +44 (0) 1633 863282  
Web: [www.analogue-micro.com](http://www.analogue-micro.com)

## **X-ON Electronics**

Largest Supplier of Electrical and Electronic Components

*Click to view similar products for [analogue & micro manufacturer](#):*

Other Similar products are found below :

[AM462](#)