

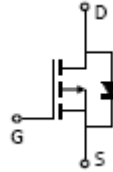
## SOT-23 Plastic-Encapsulate MOSFETS

### FEATURE

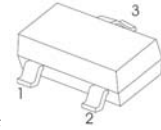
TrenchFET Power MOSFET

### APPLICATIONS

- Load Switch for Portable Devices
- DC/DC Converter



### SOT-23



1. GATE
2. SOURCE
3. DRAIN

MARKING: B7A or B7

### ■ Maximum ratings ( $T_a=25^\circ\text{C}$ unless otherwise noted)

Characteristic 特性參數	Symbol 符號	Max 最大值	Unit 單位
Drain-Source Voltage 漏極-源極電壓	$BV_{DSS}$	-30	V
Gate- Source Voltage 柵極-源極電壓	$V_{GS}$	$\pm 20$	V
Drain Current (continuous) 漏極電流-連續	$I_D$	-4.1	A
Drain Current (pulsed) 漏極電流-脈沖	$I_{DM}$	-16	A
Total Device Dissipation 總耗散功率 $T_A=25^\circ\text{C}$ 環境溫度為 $25^\circ\text{C}$	$P_D$	1400	mW
Junction 結溫	$T_J$	150	$^\circ\text{C}$
Storage Temperature 儲存溫度	$T_{stg}$	-55to+150	$^\circ\text{C}$

## SOT-23 Plastic-Encapsulate MOSFETS

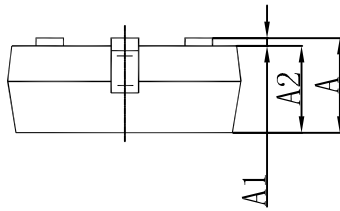
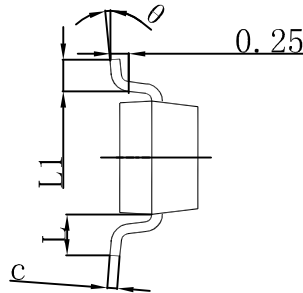
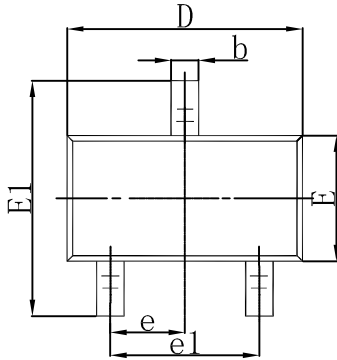
### Maximum ratings ( $T_a=25^{\circ}\text{C}$ unless otherwise noted)

Characteristic 特性參數	Symbol 符號	Min 最小值	Typ 典型值	Max 最大值	Unit 單位
Drain-Source Breakdown Voltage 漏極-源極擊穿電壓( $I_D = -250\mu\text{A}, V_{GS}=0\text{V}$ )	$BV_{DSS}$	-30	—	—	V
Gate Threshold Voltage 柵極開啟電壓( $I_D = -250\mu\text{A}, V_{GS} = V_{DS}$ )	$V_{GS(th)}$	-1	—	-2.5	V
Diode Forward Voltage Drop 內附二極管正向壓降( $I_S = -1\text{A}, V_{GS}=0\text{V}$ )	$V_{SD}$	—	—	-1	V
Zero Gate Voltage Drain Current 零柵壓漏極電流( $V_{GS}=0\text{V}, V_{DS} = -24\text{V}$ ) ( $V_{GS}=0\text{V}, V_{DS} = -24\text{V}, T_A=55^{\circ}\text{C}$ )	$I_{DSS}$	—	—	-1 -5	$\mu\text{A}$
Gate Body Leakage 柵極漏電流( $V_{GS}=\pm 20\text{V}, V_{DS}=0\text{V}$ )	$I_{GSS}$	—	—	$\pm 100$	nA
Static Drain-Source On-State Resistance 靜態漏源導通電阻( $I_D = -4.1\text{A}, V_{GS} = -10\text{V}$ )	$R_{DS(ON)}$	—	55	65	$\text{m}\Omega$
Static Drain-Source On-State Resistance 靜態漏源導通電阻( $I_D = -2\text{A}, V_{GS} = -4.5\text{V}$ )	$R_{DS(ON)}$	—	75	95	$\text{m}\Omega$
Input Capacitance 輸入電容 ( $V_{GS}=0\text{V}, V_{DS} = -15\text{V}, f=1\text{MHz}$ )	$C_{ISS}$	—	260	—	pF
Output Capacitance 輸出電容 ( $V_{GS}=0\text{V}, V_{DS} = -15\text{V}, f=1\text{MHz}$ )	$C_{OSS}$	—	37	—	pF
Turn-ON Time 開啟時間 ( $V_{DS} = -15\text{V}, V_{GS} = -10\text{V}, R_{GEN}=6\Omega$ )	$t_{(on)}$	—	6	—	ns
Turn-OFF Time 關斷時間 ( $V_{DS} = -15\text{V}, V_{GS} = -10\text{V}, R_{GEN}=6\Omega$ )	$t_{(off)}$	—	20	—	ns

Pulse Width  $\leq 300 \mu\text{s}$ ; Duty Cycle  $\leq 2.0\%$

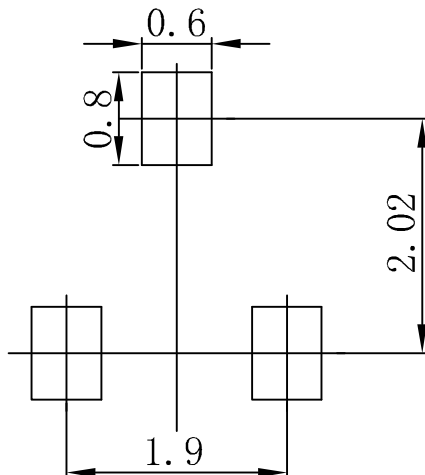
## SOT-23 Plastic-Encapsulate MOSFETS

### SOT-23 Package Outline Dimensions



Symbol	Dimensions In Millimeters		Dimensions In Inches	
	Min	Max	Min	Max
A	0.900	1.150	0.035	0.045
A1	0.000	0.100	0.000	0.004
A2	0.900	1.050	0.035	0.041
b	0.300	0.500	0.012	0.020
c	0.080	0.150	0.003	0.006
D	2.800	3.000	0.110	0.118
E	1.200	1.400	0.047	0.055
E1	2.250	2.550	0.089	0.100
e	0.950 TYP		0.037 TYP	
e1	1.800	2.000	0.071	0.079
L	0.550 REF		0.022 REF	
L1	0.300	0.500	0.012	0.020
θ	0°	8°	0°	6°

### SOT-23 Suggested Pad Layout



**Note:**

1. Controlling dimension: in millimeters.
2. General tolerance:  $\pm 0.05\text{mm}$ .
3. The pad layout is for reference purposes only.

## X-ON Electronics

Largest Supplier of Electrical and Electronic Components

*Click to view similar products for [MOSFET](#) category:*

*Click to view products by [AnBon](#) manufacturer:*

Other Similar products are found below :

[614233C](#) [648584F](#) [FDPF9N50NZ](#) [IRFD120](#) [IRFF430](#) [JANTX2N5237](#) [2N7000](#) [FCA20N60\\_F109](#) [FDZ595PZ](#) [2SK2267\(Q\)](#) [2SK2545\(Q,T\)](#)  
[405094E](#) [423220D](#) [MIC4420CM-TR](#) [VN1206L](#) [614234A](#) [715780A](#) [SSM6J414TU,LF\(T](#) [751625C](#) [PSMN4R2-30MLD](#)  
[TK31J60W5,S1VQ\(O](#) [2SK2614\(TE16L1,Q\)](#) [DMN1017UCP3-7](#) [EFC2J004NUZTDG](#) [FCAB21350L1](#) [P85W28HP2F-7071](#) [DMN1053UCP4-7](#)  
[NTE2384](#) [NTE2969](#) [NTE6400A](#) [DMN61D9UWQ-13](#) [US6M2GTR](#) [DMN31D5UDJ-7](#) [SSM6P54TU,LF](#) [DMP22D4UFO-7B](#)  
[IPS60R3K4CEAKMA1](#) [DMN1006UCA6-7](#) [DMN16M9UCA6-7](#) [STF5N65M6](#) [STU5N65M6](#) [C3M0021120D](#) [DMN13M9UCA6-7](#)  
[BSS340NWH6327XTSA1](#) [MCM3400A-TP](#) [DMTH10H4M6SPS-13](#) [IPS60R1K0PFD7SAKMA1](#) [IPS60R360PFD7SAKMA1](#)  
[IPS60R600PFD7SAKMA1](#) [IPS60R210PFD7SAKMA1](#) [DMN2990UFB-7B](#)