

Product Summary

$V_{(BR)DSS}$	$R_{DS(on)MAX}$	I_D
-20V	36mΩ@-4.5V	-5.6A
	49mΩ@-2.5V	
	69mΩ@-1.8V	

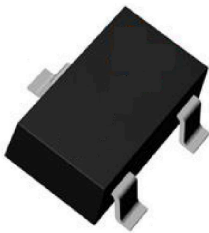
Feature

- Advanced trench process technology
- High density cell design for ultra low on-resistance
- ESD Protected Up to 2.0KV (HBM)

Application

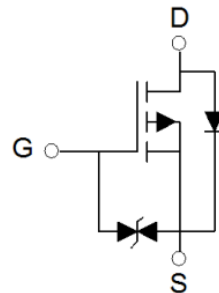
- Load Switch for Portable Devices
- DC/DC Converter

Package

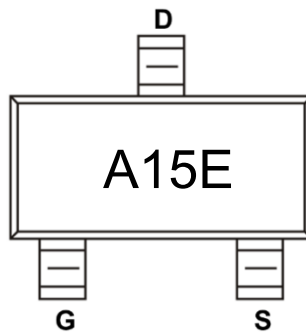
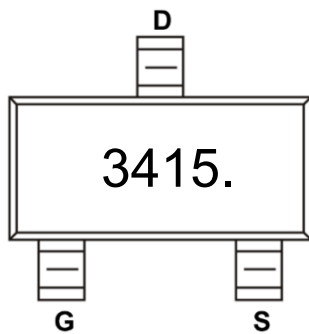


SOT-23

Circuit diagram



Marking



Absolute maximum ratings (Ta=25°C unless otherwise noted)

Parameter	Symbol	Value	Unit
Drain-Source Voltage	V _{DS}	-20	V
Gate-Source Voltage	V _{GS}	±12	V
Continuous Drain Current	I _D	-5.6	A
Pulsed Drain Current	I _{DM}	-23	A
Power Dissipation	P _D	1.3	W
Junction Temperature	T _J	150	°C
Storage Temperature	T _{STG}	-55 ~ +150	°C

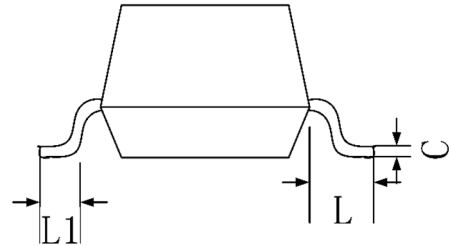
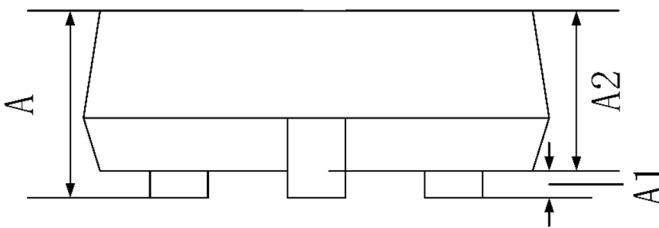
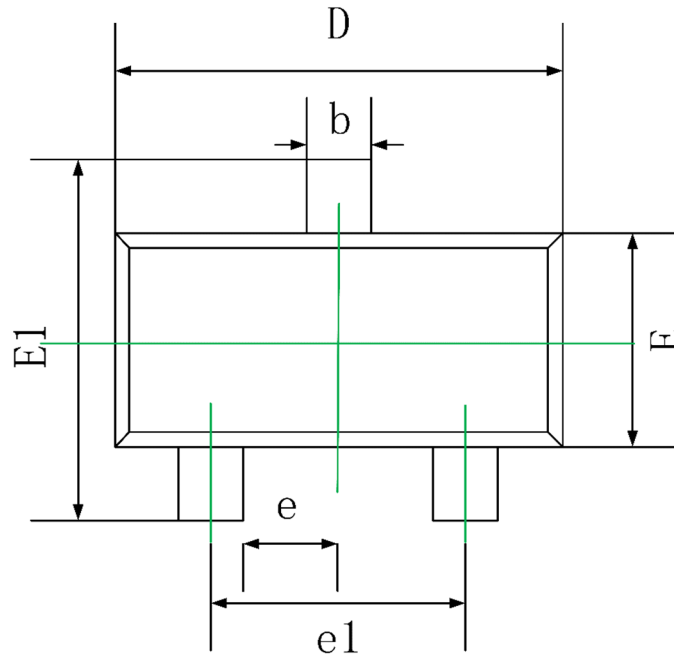
Electrical characteristics (TA=25 °C, unless otherwise noted)

Parameter	Symbol	Test Condition	Min.	Typ.	Max.	Unit
Static Characteristics						
Drain-source breakdown voltage	V _{(BR)DSS}	V _{GS} = 0V, I _D = -250μA	-20			V
Zero gate voltage drain current	I _{DSS}	V _{DS} = -20V, V _{GS} = 0V			-1	μA
Gate-body leakage current	I _{GSS}	V _{GS} = ±12V, V _{DS} = 0V			±15	μA
Gate threshold voltage	V _{GS(th)}	V _{DS} = V _{GS} , I _D = -250μA	-0.35		-1	V
Drain-source on-resistance ¹⁾	R _{DS(on)}	V _{GS} = -4.5V, I _D = -5.6A			36	mΩ
		V _{GS} = -2.5V, I _D = -4.3A			49	
		V _{GS} = -1.8V, I _D = -3.0A			69	
Dynamic characteristics²⁾						
Input Capacitance	C _{iss}	V _{DS} = -10V, V _{GS} = 0V, f = 1MHz		940		pF
Output Capacitance	C _{oss}			219		
Reverse Transfer Capacitance	C _{rss}			116		
Total Gate Charge	Q _g	V _{DS} = -10V, V _{GS} = -4.5V, I _D = -4A		7.2		nC
Gate-Source Charge	Q _{gs}			1.2		
Gate-Drain Charge	Q _{gd}			1.6		
Turn-on delay time	t _{d(on)}	V _{DD} = -10V, V _{GS} = -4.5V, R _{GEN} = 3Ω, R _L = 2.5Ω		15		nS
Turn-on rise time	t _r			63		
Turn-off delay time	t _{d(off)}			21		
Turn-off fall time	t _f			12		
Source-Drain Diode characteristics						
Diode Forward Current ¹⁾	I _S				-5.6	A
Diode Forward voltage	V _{DS}	V _{GS} = 0V, I _S = -5.6A			-1.2	V

Notes:

- 1) Pulse Test: Pulse Width < 300μs, Duty Cycle ≤ 2%.
- 2) Guaranteed by design, not subject to production testing.

SOT-23 Package Information



Symbol	Dimensions In Millimeters		Dimensions In Inches	
	Min.	Max.	Min.	Max.
A	0.900	1.150	0.035	0.045
A1	0.000	0.100	0.000	0.004
A2	0.900	1.050	0.035	0.041
b	0.300	0.500	0.012	0.020
c	0.080	0.150	0.003	0.006
D	2.800	3.000	0.110	0.118
E	1.200	1.400	0.047	0.055
E1	2.250	2.550	0.089	0.100
e	0.950 TYP.		0.037 TYP.	
e1	1.800	2.000	0.071	0.079
L	0.550 REF.		0.022 REF.	
L1	0.300	0.500	0.012	0.020

X-ON Electronics

Largest Supplier of Electrical and Electronic Components

Click to view similar products for [MOSFET](#) category:

Click to view products by [AnBon](#) manufacturer:

Other Similar products are found below :

[614233C](#) [648584F](#) [MCH3443-TL-E](#) [MCH6422-TL-E](#) [FDPF9N50NZ](#) [FW216A-TL-2W](#) [FW231A-TL-E](#) [APT5010JVR](#) [NTNS3A92PZT5G](#)
[IRF100S201](#) [JANTX2N5237](#) [2SK2464-TL-E](#) [2SK3818-DL-E](#) [FCA20N60_F109](#) [FDZ595PZ](#) [STD6600NT4G](#) [FSS804-TL-E](#) [2SJ277-DL-E](#)
[2SK1691-DL-E](#) [2SK2545\(Q,T\)](#) [D2294UK](#) [405094E](#) [423220D](#) [MCH6646-TL-E](#) [TPCC8103,L1Q\(CM](#) [367-8430-0972-503](#) [VN1206L](#)
[424134F](#) [026935X](#) [051075F](#) [SBVS138LT1G](#) [614234A](#) [715780A](#) [NTNS3166NZT5G](#) [751625C](#) [873612G](#) [IRF7380TRHR](#)
[IPS70R2K0CEAKMA1](#) [RJK60S3DPP-E0#T2](#) [RJK60S5DPK-M0#T0](#) [APT5010JVFR](#) [APT12031JFLL](#) [APT12040JVR](#) [DMN3404LQ-7](#)
[NTE6400](#) [JANTX2N6796U](#) [JANTX2N6784U](#) [JANTXV2N5416U4](#) [SQM110N05-06L-GE3](#) [SIHF35N60E-GE3](#)