

The innovative SB® connectors provide cost-effective reliability, design flexibility and safety for your products' manufacture, installation and maintenance.

APP's 2 pole connector is available with a 120 amp rating, 600 Volts continuous AC or DC operation. There are SB® connectors for many applications and wire sizes, #2 to #6 AWG (33.6 to 13.3 mm²). Mechanical keys ensure connectors will only mate with connectors of the same color. Different color housings are selected to identify voltages, thus preventing mismatching of the power supply system.

FEATURES

- **Molded side grooves**

Allows for a secure panel mounting fit

- **Mechanical keyed housings**

Prevents accidental mating of components operating at different voltage levels

- **Single-piece housing and unitized construction**

Provides industrial quality and durability



PRODUCT SPECIFICATIONS

Connector Model	SB®120	Connector Model	SB®120
UL Current Rating (Amperes)*	120*	Life	
UL Voltage Ratings (Volts)	600*	a. No load (Contact/Disconnect Cycles)	To 10,000
Contact Barrel Wire Size (AWG)	#2 to #6	b. Under Load (Hot Plug 250 cycles @ 120V)	60A
(mm ²)	33.3 to 13.3	Avg. Connection/Disconnect (lbs)	20
Maximum Wire Insulation Diameter (inches)	0.575	Operating Temperature Range °C**	-20° to 105°
(mm)	14.6	Flammability Rating of Housing Material	UL94 V-0
AVG Contact Resistance* (micro-ohms)	136		
Insulation Withstanding Test Voltage (Volts AC/DC)	2200		
Contact Retention Force (lbs)	100		

* UL Rated for 75°C rated wire or cable size
** Contact factory for higher temperature rated connector
SB®, UL and CSA Reference: This equipment is an Underwriters Laboratories Inc® recognized component. It is also listed by the Canadian Standards Association as certified.

ORDERING INFORMATION

2 Pole Housing & 120 amp Contacts

Part Number	Housing Color	Wire	
		AWG	sq. mm
6800G1	Gray	#2	33.6
6801G1	Blue	#2	33.6
6802G1	Red	#2	33.6
6800G2	Gray	#4	21.1
6801G2	Blue	#4	21.1
6802G2	Red	#4	21.1
6800G3	Gray	#6	13.3
6801G3	Blue	#6	13.3
6802G3	Red	#6	13.3

Housing Only

Part Number	Description
6810G1	Gray housing
6810G2	Blue housing
6810G3	Red housing

120 amp Contacts

Part Number	Description	Wire	
		AWG	sq. mm
1319-BK	Bulk, low detent	#2	33.6
1319G4-BK	Bulk, low detent	#4	21.2
1319G6-BK	Bulk, low detent	#6	13.3
6811G1	Set (2), low detent	#2	33.6
6811G2	Set (2), low detent	#4	21.1
6811G3	Set (2), low detent	#6	13.3

Bushings

Part Number	Description	Wire	
		AWG	sq. mm
5919	Use with 6811G1 #2 to #4	#2 to #4	33.6/21.2
5920	Use with 6811G1 #2 to #6	#2 to #6	33.6/13.3
5921	Use with 6811G1 #2 to #8	#2 to #8	33.6/8.4

Accessories

Part Number	Description
SB120-HDL-RED	SB handle with hardware-red
981G1	Cable clamp for 2 single conductor cables
1467G1	Panel mounting bracket

Tooling

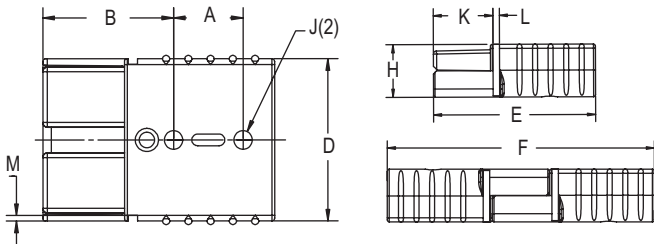
Part Number	Description
1368	Hand tool - #2 to #8
1387G1	Pneumatic tool - #2 to #8
1388G4	- die for #2 to #8
1389G4	- locator #2 to #8

DIMENSIONS

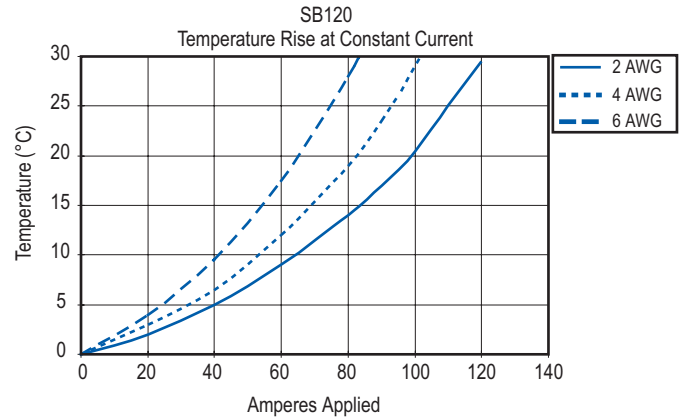
Housing

Series	-A-		-B-		-D-		-E-		-F-	
	mm	in.	mm	in.	mm	in.	mm	in.	mm	in.
SB®120	19.05	.75	35.81	1.41	44.45	1.75	63.5	2.50	104.65	4.12

Series	-H-		-J-		-K-		-L-		-M-	
	mm	in.	mm	in.	mm	in.	mm	in.	mm	in.
SB®120	20.62	.81	5.05	.20	23.37	.92	2.54	.10	1.52	.06

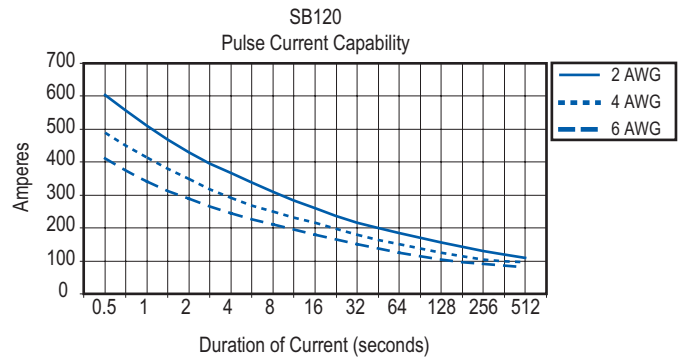
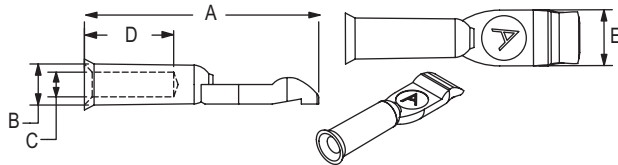


TEMPERATURE RISE CHARTS



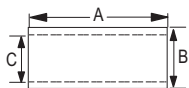
Contacts

Part Number	Contact Detent	-A-	-B-	-C-	-D-	-E-
		mm	in.	mm	in.	mm
1319-BK	Low	50.8	2.00	11.1	.44	8.7
1319G4-BK	Low	50.8	2.00	11.1	.44	7.5
1319G6-BK	Low	50.8	2.00	11.1	.44	5.6
6811G1	Low	50.8	2.00	11.1	.44	8.7
6811G2	Low	50.8	2.00	11.1	.44	7.5
6811G3	Low	50.8	2.00	11.1	.44	5.6



Bushings - (for use with 6811G1 contacts)

Part Number	Reduces From	-A-	-B-	-C-
		mm	in.	mm
5919	#2 to #4 AWG	21.34	.84	8.36
5920	#2 to #6 AWG	21.34	.84	8.36
5921	#2 to #8 AWG	21.34	.84	8.36



X-ON Electronics

Largest Supplier of Electrical and Electronic Components

Click to view similar products for [Heavy Duty Power Connectors](#) category:

Click to view products by [Anderson Power Products](#) manufacturer:

Other Similar products are found below :

[647757-1](#) [6643411-1](#) [6646058-2](#) [6646137-1](#) [6646138-1](#) [6646479-1](#) [6646608-1](#) [6646786-1](#) [6646940-1](#) [6651091-1](#) [6651525-1](#) [6651529-1](#)
[6651788-1](#) [696475-1](#) [73000005059](#) [73000005642](#) [765-15-0080A](#) [765-16-0080B](#) [829992-1](#) [902-77-02113](#) [129-1J](#) [AN0024023](#) [E6374G1](#)
[e6389g2](#) [157-43GW8](#) [MS3117-14AC](#) [1643543-1](#) [1650540-1](#) [1651811-2](#) [1766260-1](#) [1766282-1](#) [1766966-1](#) [1791340000](#) [NLDFT-3-BL-L-](#)
[S120-M40A](#) [NLDFT-N-W-L-C240-M40B](#) [NLS-2-R-C240-M40B](#) [NLS-N-W-C240-M40B](#) [NPS-3-BL-T6](#) [1986615-1](#) [2-1589900-8](#) [2199314-1](#)
[KA8102](#) [9300480317](#) [SBS50BRN#6](#) [29131](#) [29652](#) [1646905-1](#) [1648320-1](#) [1648582-1](#) [1650195-2](#)