

ARHA Series High Voltage

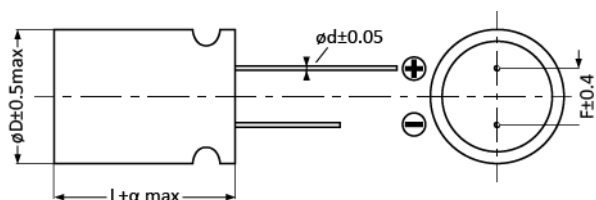
- Rated Voltage: 25~100Vdc
- Endurance 5000hrs at 105°C
- Suitable for AC-DC、DC-DC converters, voltage regulators and decoupling applications
- RoHS Compliant



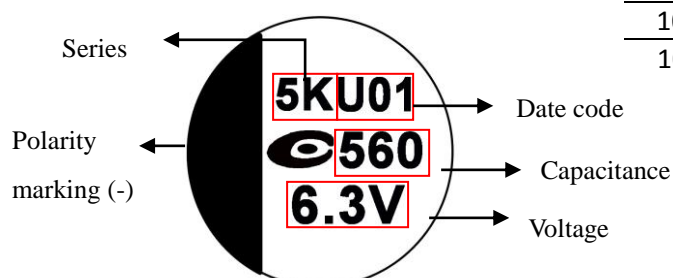
Specification

| | | | |
|----------------------------|--|---------------------------------------|-------------------------|
| Category Temperature Range | -55 to 105°C | Rated Voltage Range | 25 to 100Vdc |
| Rated Capacitance Range | 22 to 1500 (μF) | Capacitance Tolerance | ±20% (M) |
| Surge Voltage | Rated voltage x1.15(at 105°C) | Dissipation Factor | 0.12max.(at 20°C 120Hz) |
| Leakage Current | Shall not exceed values shown in standard ratings. | | |
| Endurance | 105°C, 5000hrs, rated voltage applied | | |
| | Appearance | No significant damage | |
| | Capacitance Change | ≤ ±20% of the initial value | |
| | DF(tanδ) | ≤ 150% of the initial specified value | |
| | ESR | ≤ 150% of the initial specified value | |
| | Leakage current | ≤ The initial specified value | |
| Damp Heat (Steady State) | 60°C, 90 to 95% RH, 1000hrs, no voltage applied | | |
| | Appearance | No significant damage | |
| | Capacitance Change | ≤ ±20% of the initial value | |
| | DF(tanδ) | ≤ 150% of the initial specified value | |
| | ESR | ≤ 150% of the initial specified value | |
| | Leakage current | ≤ The initial specified value | |
| Surge Voltage | 1,000 cycles and each one includes charge with surge voltage specified at 105°C for 0.5min through a protective resistor (R=1kΩ) and discharge for 5.5min. | | |
| | Appearance | No significant damage | |
| | Capacitance Change | ≤ ±20% of the initial value | |
| | DF(tanδ) | ≤ 150% of the initial specified value | |
| | ESR | ≤ 150% of the initial specified value | |
| | Leakage current | ≤ The initial specified value | |

Dimensions and Marking



| SIZE Code | øD±0.5 max | L | α | ød±0.05 | F±0.4 |
|-----------|------------|------|----------|---------|-------|
| 08X8 | 8.0 | 8.0 | -0.5~1.0 | 0.6 | 3.5 |
| 08A2 | 8.0 | 12.0 | -0.5~1.0 | 0.6 | 3.5 |
| 08A6 | 8.0 | 16.0 | -0.5~1.0 | 0.6 | 3.5 |
| 08B0 | 8.0 | 20.0 | -0.5~1.0 | 0.6 | 3.5 |
| 10A2 | 10.0 | 12.0 | -0.5~1.0 | 0.6 | 5.0 |
| 10A6 | 10.0 | 16.0 | -0.5~1.0 | 0.6 | 5.0 |
| 10B0 | 10.0 | 20.0 | -0.5~1.0 | 0.6 | 5.0 |



ARHA Series **High Voltage**

| WV/Vdc (SV) | Cap (µF) | Size Code | Leakage Current (µA) | ESR (mΩmax/20°C, 100k to300kHz) | Rated Ripple Current (mArms/ 105°C /100kHz) | Part No. |
|--------------|--------------|-----------|----------------------|---------------------------------|---|-----------------|
| 25 (28.8) | 82 | 06X8 | 410 | 28 | 2,780 | 250ARHA820M06X8 |
| | 100 | 08A2 | 500 | 22 | 3,600 | 250ARHA101M08A2 |
| | 220 | 08A2 | 1,100 | 16 | 4,650 | 250ARHA221M08A2 |
| | 330 | 08A2 | 1,650 | 16 | 4,650 | 250ARHA331M08A2 |
| | 470 | 08A2 | 2,350 | 16 | 4,650 | 250ARHA471M08A2 |
| | 560 | 10A2 | 2,800 | 14 | 5,100 | 250ARHA561M10A2 |
| | 680 | 08A6 | 3,400 | 14 | 5,000 | 250ARHA681M08A6 |
| | 680 | 10A2 | 3,400 | 14 | 5,100 | 250ARHA681M10A2 |
| | 820 | 08B0 | 4,100 | 13 | 5,100 | 250ARHA821M08B0 |
| | 1000 | 10A6 | 5,000 | 13 | 5,200 | 250ARHA102M10A6 |
| | 1500 | 10B0 | 7,500 | 13 | 5,300 | 250ARHA152M10B0 |
| | 35 (40.3) | 47 | 06X5 | 329 | 35 | 2,300 |
| 68 | | 06X8 | 476 | 25 | 2,600 | 350ARHA680M06X8 |
| 100 | | 06X8 | 700 | 35 | 2,350 | 350ARHA101M06X8 |
| 100 | | 08X8 | 700 | 23 | 2,800 | 350ARHA101M08X8 |
| 220 | | 08A2 | 1,540 | 25 | 2,890 | 350ARHA221M08A2 |
| 330 | | 10A2 | 2,310 | 24 | 3,400 | 350ARHA331M10A2 |
| 470 | | 08B0 | 3,290 | 20 | 4,400 | 350ARHA471M08B0 |
| 470 | | 10A6 | 3,290 | 25 | 4,000 | 350ARHA471M10A6 |
| 560 | | 10A6 | 3,920 | 23 | 4,200 | 350ARHA561M10A6 |
| 680 | 10B0 | 4,760 | 20 | 4,800 | 350ARHA681M10B0 | |
| 50 (57.5) | 120 | 08A2 | 1,200 | 28 | 2,620 | 500ARHA121M08A2 |
| | 180 | 10A2 | 1,800 | 28 | 3,100 | 500ARHA181M10A2 |
| | 220 | 10A2 | 2,200 | 28 | 3,100 | 500ARHA221M10A2 |
| | 390 | 10B0 | 3,900 | 23 | 3,800 | 500ARHA391M10B0 |
| 63 (72.5) | 22 | 08X8 | 277 | 35 | 2,100 | 630ARHA220M08X8 |
| | 47 | 08A2 | 592 | 30 | 2,500 | 630ARHA470M08A2 |
| | 68 | 10A2 | 857 | 25 | 2,500 | 630ARHA680M10A2 |
| | 100 | 10A2 | 1,260 | 30 | 2,700 | 630ARHA101M10A2 |
| | 180 | 10A2 | 2,268 | 30 | 2,700 | 630ARHA181M10A2 |
| 80 (92) | 22 | 08X8 | 352 | 40 | 1,700 | 800ARHA220M08X8 |
| | 47 | 10A2 | 752 | 32 | 2,100 | 800ARHA470M10A2 |
| | 82 | 10A2 | 1,312 | 32 | 2,200 | 800ARHA820M10A2 |
| 100 (115) | 22 | 10A2 | 440 | 45 | 1,600 | 101ARHA220M10A2 |
| | 47 | 10A2 | 940 | 35 | 2,100 | 101ARHA470M10A2 |

X-ON Electronics

Largest Supplier of Electrical and Electronic Components

Click to view similar products for [Polymer Capacitors](#) category:

Click to view products by [APAQ](#) manufacturer:

Other Similar products are found below :

[ORZ271M1CCC-08087](#) [SA10JM220A19R45XXX](#) [SA10JM470A19R25XXX](#) [ACAH100S101E40Y](#) [BC6R3M471LC6.3x8L-1A42R5L=10±0.5T](#) [160AR5K101M0609C](#) [160AR5K271M0809G13](#) [160ARCP331M06X8PZ](#) [160ARCP331M06X8PZP00](#) [160ARCP331M06X8PZT](#) [160ARCP471M06A1PZ](#) [160AREP102M10A2](#) [160AREP221M06X8](#) [160AREP331M05A0PFBT](#) [160AREP331M05A1](#) [160AREP681M08A2](#) [160AVCA101M0506E30](#) [160AVEA221M0608](#) [16SVPG270M](#) [6SEPC470MX+TSS](#) [10SVQP120M](#) [250ARCP221M06A0T](#) [250ARHA471M08A2](#) [250AVHA470M0606](#) [OCV221M0JTR0807](#) [20SEF120M](#) [35SVPK82M](#) [16SVF560M](#) [35SVPK47M](#) [OCV470M1DTR-0807](#) [16SVF270M](#) [16SEF560M](#) [OCV221M0JTR-0607](#) [16SEF1000M](#) [35SVPK330M](#) [RNE0J122MDN1](#) [ORE471M1CBK-1012](#) [350ARCP101M06X8P00](#) [350AVCA470M0606E38](#) [6R3ARCP271M05X7P00](#) [6R3ARCP271M05X7PFBT](#) [6R3ARCP471M06X8PZ](#) [6R3ARCP471M06X8PZP00](#) [6R3ARCP561M06X8PZP00](#) [6R3ARCP681M06X8PZ](#) [6R3AREP102M06A0P00](#) [6R3AREP391M05X8](#) [6R3AREP471M05X8](#) [6R3AREP681M05A1](#) [6R3AVEA561M0608](#)