

ARHA Series High Voltage

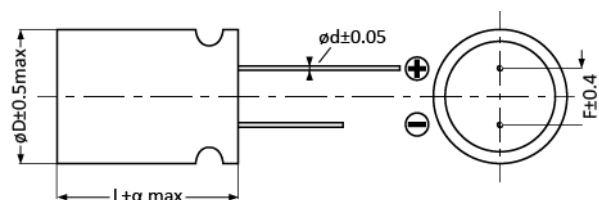
- Rated Voltage: 25~50Vdc
- Endurance 5000hrs at 105°C
- Suitable for AC-DC、DC-DC converters, voltage regulators and decoupling applications
- RoHS Compliant



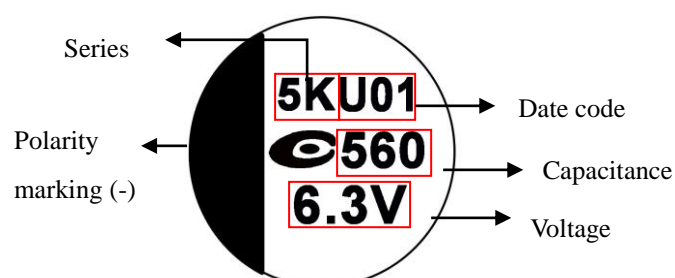
Specification

Category	Temperature Range	-55 to 105°C	Rated Voltage Range	25 to 50Vdc
Rated Capacitance Range	47 to 1500 (μF)	Capacitance Tolerance	±20% (M)	
Surge Voltage	Rated voltage x1.15(at 105°C)	Dissipation Factor	0.12max.(at 20°C 120Hz)	
Leakage Current	Shall not exceed values shown in standard ratings.			
Endurance	105°C, 5000hrs, rated voltage applied			
	Appearance	No significant damage		
	Capacitance Change	≤ ±20% of the initial value		
	DF(tanδ)	≤ 150% of the initial specified value		
	ESR	≤ 150% of the initial specified value		
	Leakage current	≤ The initial specified value		
Damp Heat (Steady State)	60°C, 90 to 95% RH, 1000hrs, no voltage applied			
	Appearance	No significant damage		
	Capacitance Change	≤ ±20% of the initial value		
	DF(tanδ)	≤ 150% of the initial specified value		
	ESR	≤ 150% of the initial specified value		
	Leakage current	≤ The initial specified value		
Surge Voltage	1,000 cycles and each one includes charge with surge voltage specified at 105°C for 0.5min through a protective resistor (R=1kΩ) and discharge for 5.5min.			
	Appearance	No significant damage		
	Capacitance Change	≤ ±20% of the initial value		
	DF(tanδ)	≤ 150% of the initial specified value		
	ESR	≤ 150% of the initial specified value		
	Leakage current	≤ The initial specified value		

Dimensions and Marking



SIZE Code	øD±0.5 max	L	α	ød±0.05	F±0.4
08X8	8.0	8.0	1.0	0.6	3.5
08A2	8.0	11.5	1.5	0.6	3.5
08A6	8.0	16.0	1.5	0.6	3.5
08B0	8.0	20.0	1.5	0.6	3.5
10A2	10.0	11.5	1.5	0.6	5.0
10A6	10.0	16.0	1.5	0.6	5.0
10B0	10.0	20.0	1.5	0.6	5.0



ARHA Series **High Voltage**

WV/Vdc (SV)	Cap (µF)	Size Code	Leakage Current (µA)	ESR (mΩmax/20%, 100k to300kHz)	Rated Ripple Current (mArms/ 105°C /100kHz)	Part No.
25 (28.8)	220	08A2	1,100	16	4,650	250ARHA221M08A2
	330	08A2	1,650	16	4,650	250ARHA331M08A2
	470	08A2	2,350	16	4,650	250ARHA471M08A2
	560	10A2	2,800	14	5,100	250ARHA561M10A2
	560	08A6	2,800	16	4,650	250ARHA561M08A6
	680	08A6	1,496	14	4,650	250ARHA681M08A6
	680	10A2	1,496	14	5,100	250ARHA681M10A2
	820	08B0	4,100	13	5,100	250ARHA821M08B0
	1000	10A6	5,000	14	5,200	250ARHA102M10A6
	1500	10B0	7,500	13	5,300	250ARHA152M10B0
35 (40.3)	68	08X8	476	28	2,800	350ARHA680M08X8
	100	08X8	700	23	2,800	350ARHA101M08X8
	150	08A2	1,050	25	3,000	350ARHA151M08A2
	220	08A2	1,540	25	2,890	350ARHA221M08A2
	220	10A2	1,540	24	3,400	350ARHA221M10A2
	330	08A6	2,310	23	3,800	350ARHA331M08A6
	330	10A2	2,310	24	3,400	350ARHA331M10A2
	470	08B0	3,290	20	4,400	350ARHA471M08B0
	470	10A6	3,290	25	4,000	350ARHA471M10A6
	560	10A6	3,920	23	4,200	350ARHA561M10A6
680	10B0	4,760	20	4,800	350ARHA681M10B0	
50 (57.5)	47	08A2	470	28	2,620	500ARHA470M08A2
	68	08A2	680	28	2,620	500ARHA680M08A2
	120	08A2	1,200	28	2,620	500ARHA121M08A2
	150	08A6	1,500	28	2,620	500ARHA151M08A6
	180	10A2	1,800	28	3,100	500ARHA181M10A2
	220	10A2	2,200	28	3,100	500ARHA221M10A2
	390	10B0	3,900	23	3,800	500ARHA391M10B0

X-ON Electronics

Largest Supplier of Electrical and Electronic Components

Click to view similar products for [Aluminium Organic Polymer Capacitors](#) category:

Click to view products by [APAQ](#) manufacturer:

Other Similar products are found below :

[750-1809](#) [SEAU0A0102G](#) [MAL218497801E3](#) [MAL218297003E3](#) [MAL218497803E3](#) [MAL218397603E3](#) [MAL218297802E3](#)

[MAL218497701E3](#) [MAL218397102E3](#) [MAL218297804E3](#) [MAL218497804E3](#) [MAL218697005E3](#) [MAL218697509E3](#) [MAL218297603E3](#)

[MAL218397604E3](#) [MAL218697106E3](#) [MAL218297005E3](#) [MAL218397106E3](#) [MAL218297103E3](#) [MAL218397104E3](#) [MAL218297604E3](#)

[MAL218697601E3](#) [MAL218697554E3](#) [MAL218697607E3](#) [MAL218397702E3](#) [MAL218497901E3](#) [MAL218497806E3](#) [MAL218697001E3](#)

[PCZ1V181MCL1GS](#) [PCZ1E331MCL1GS](#) [35PZF270MT810X9](#) [HHXD500ARA470MHA0G](#) [APD1012271M035R](#) [APD1012331M035R](#)

[APA0609471M006R](#) [APA0609561M004R](#) [APA0609561M006R](#) [APD0811271M035R](#) [APA0807561M004R](#) [APA0809331M016R](#)

[APA0809561M010R](#) [APA0809821M004R](#) [APA0809821M006R](#) [APA0812471M016R](#) [APA0812561M016R](#) [APA1010122M006R](#)

[APA1010152M004R](#) [APA1012122M010R](#) [APA1012821M016R](#) [SPT1EM681F16OR](#)