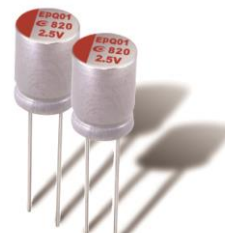


## AREP Series **Power**

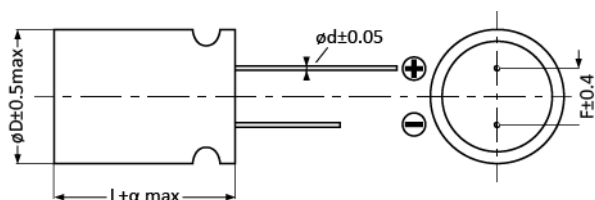
- Super low ESR, high ripple current capability, high voltage
- Rated voltage: 6.3~16Vdc
- Endurance 3000hrs at 105°C
- Suitable for AC-DC DC-DC converters, voltage regulators and decoupling applications
- RoHS Compliant



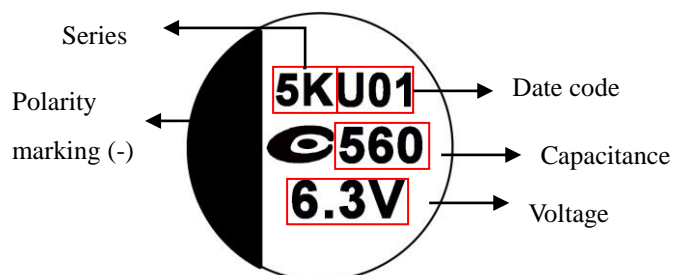
### Specification

Category Temperature Range	-55 to 105°C	Rated Voltage Range	6.3 to 16Vdc
	''	Capacitance Tolerance	±20% (M)
Surge Voltage	Rated voltage X 1.15 (at 105°C)	Dissipation Factor	0.1 max. (at 20°C 120Hz)
Leakage Current	Shall not exceed values shown in standard ratings. (at 20°C after 2 mins.)		
Endurance	105°C, 3000hrs, rated voltage applied		
	Appearance	No significant damage	
	Capacitance Change	≤ ±20% of the initial value	
	DF(tanδ)	≤ 150% of the initial specified value	
	ESR	≤ 150% of the initial specified value	
	Leakage current	≤ The initial specified value	
Damp Heat (Steady State)	60°C, 90 to 95% RH, 1000hrs, no voltage applied		
	Appearance	No significant damage	
	Capacitance Change	≤ ±20% of the initial value	
	DF(tanδ)	≤ 150% of the initial specified value	
	ESR	≤ 150% of the initial specified value	
	Leakage current	≤ The initial specified value	
Surge Voltage	1,000 cycles and each one includes charge with surge voltage specified at 105°C for 0.5min through a protective resistor (R=1kΩ) and discharge for 5.5min.		
	Appearance	No significant damage	
	Capacitance Change	≤ ±20% of the initial value	
	DF(tanδ)	≤ 150% of the initial specified value	
	ESR	≤ 150% of the initial specified value	
	Leakage current	≤ The initial specified value	

### Dimensions and Marking



SIZE Code	øD±0.5 max	L	α	ød ±0.05	F±0.4
05X8	5.0	8.0	1.0	0.5	2.0
06X8	6.3	8.0	1.0	0.6	2.5
06A0	6.3	10.0	1.0	0.6	2.5
06A1	6.3	11.0	1.0	0.6	2.5
08A2	8.0	11.5	1.5	0.6	3.5
08A6	8.0	16.0	1.5	0.6	3.5
10A2	10.0	11.5	1.5	0.6	5.0
10A6	10.0	16.0	1.5	0.6	5.0
10B0	10.0	20.0	1.5	0.6	5.0



AREP Series **Power**

Standard Ratings

WV/Vdc (SV)	Cap (μF)	Size Code	Leakage Current (μA)	ESR (mΩmax/20%, 100k to300kHz)	Rated Ripple Current (mArms/ 105°C /100kHz)	Part No.
6.3 (7.2)	330	05X8	500	8	4,050	6R3AREP331M05X8
	470	05X8	592	8	4,050	6R3AREP471M05X8
	470	06X8	592	8	4,700	6R3AREP471M06X8
	560	06X8	705	8	4,700	6R3AREP561M06X8
	680	06X8	857	8	4,700	6R3AREP681M06X8
	820	06X8	1,033	8	4,700	6R3AREP821M06X8
	1000	06A0	1,260	8	4,700	6R3AREP102M06A0
	1500	08A2	1,890	7	6,100	6R3AREP152M08A2
7.5 (8.6)	500	05X8	750	12	3,500	7R5AREP501M05X8
	680	06X8	1,020	12	4,780	7R5AREP681M06X8
	820	06A1	1,230	10	5,200	7R5AREP821M06A1
12 (13.8)	470	06A0	1,128	12	3,900	120AREP471M06A0
	560	06A0	1,344	12	3,900	120AREP561M06A0
	680	06A1	1,632	18	3,900	120AREP681M06A1
	820	06A1	1,968	15	4,000	120AREP821M06A1
16 (18.4)	330	06X8	1,056	20	2,800	160AREP331M06X8
	470	06A1	1,505	16	4,000	160AREP471M06A1
	560	06A1	1,792	20	3,500	160AREP561M06A1
	680	08A2	2,176	10	5,230	160AREP681M08A2
	820	08A2	2,624	10	5,230	160AREP821M08A2
	1000	08A6	3,200	10	6,100	160AREP102M08A6
	1000	10A2	3,200	12	5,400	160AREP102M10A2
	1500	10A6	4,800	10	6,600	160AREP152M10A6
	2200	10B0	7,040	8	8,100	160AREP222M10B0
2500	10B0	8,000	8	8,100	160AREP252M10B0	

## X-ON Electronics

Largest Supplier of Electrical and Electronic Components

*Click to view similar products for [Aluminium Organic Polymer Capacitors](#) category:*

*Click to view products by [APAQ](#) manufacturer:*

Other Similar products are found below :

[D38999/20WJ43SN-LC](#) [750-1809](#) [SEAU0A0102G](#) [MAL218497801E3](#) [MAL218297003E3](#) [MAL218297802E3](#) [MAL218497701E3](#)  
[MAL218297804E3](#) [MAL218697509E3](#) [MAL218397604E3](#) [MAL218297005E3](#) [MAL218397106E3](#) [MAL218697601E3](#) [MAL218697554E3](#)  
[MAL218497806E3](#) [MAL218697001E3](#) [PCZ1V181MCL1GS](#) [PCZ1E331MCL1GS](#) [HHXD500ARA470MHA0G](#) [APD1012271M035R](#)  
[APD1012331M035R](#) [APA0609471M006R](#) [APA0609561M004R](#) [APA0609561M006R](#) [APD0811271M035R](#) [APA0807561M004R](#)  
[APA0809331M016R](#) [APA0809561M010R](#) [APA0809821M004R](#) [APA0809821M006R](#) [APA0812102M006R](#) [APA0812122M004R](#)  
[APA0812471M016R](#) [APA0812561M016R](#) [APA0812681M010R](#) [APA1010102M010R](#) [APA1010122M006R](#) [APA1010331M025R](#)  
[APA1010681M016R](#) [APA1010821M010R](#) [APA1012122M010R](#) [APA1012182M006R](#) [APA1012222M004R](#) [APA1012271M035R](#)  
[APA1012471M025R](#) [APA1012821M016R](#) [SPT1HM221G12ORVZC](#) [SPT1HM471G20ORVZC](#) [SPT0JM331E05ORVZC](#)  
[SPT0IM561E12ORVZC](#)