

13000 series

Professional quick-break momentary pushbutton switches

Distinctive features and specifications



- PC and panel mount models
- Bushing \varnothing 6,35 (1/4) and 11,9 (15/32)
- UL and CECC approved

B

ELECTRICAL SPECIFICATIONS

- Max. current/voltage rating with resistive load :
 - silver contacts (A-AD2) : 2A 250VAC - 4A 125VAC - 4A 30VDC
 - gold plated contacts (CD) : 100mA 30V
- Minimum load (AD2-CD contacts) : 10mA 50mV, 10 μ A 5V min.
- Initial contact resistance : 10 m Ω max.
- Insulation resistance : 1.000 M Ω min. at 500VDC
- Dielectric strength :
 - 1.000 Vrms 50 Hz min. between terminals
 - 2.000 Vrms 50 Hz min. between poles and between terminals and frame
- Contact bounce : 2 ms max.
- Electrical life :

| Contacts | Max. current/voltage rating | Number of cycles |
|----------|--|------------------|
| A | 2A 250VAC - 4A 125VAC - 4A 30VDC | 50.000 |
| AD2 | 2A 250VAC - 4A 125 VAC - 4A 30VDC (gold plating : 100mA 30VDC max.) | 20.000 |
| CD | 100mA 30VDC | 50.000 |
| | Low level or mechanical life | 150.000 |

MATERIALS

- Case : diallylphthalate (DAP)
- Actuator : brass, chrome plated
- Bushing : brass, nickel plated
- Housing : brass, nickel plated
- Contacts : **A** : silver
AD2 : silver, gold plated
(2 micron gold)
CD : brass, gold plated
- Terminal seal : epoxy

Note : AD2 contacts can be used for high level applications. In this case, the gold layer is considered only as a protection against oxidation during storage.

GENERAL SPECIFICATIONS

- Torque : 1,25 Nm (.922 Ft.lb)
max. applied to nut
- Standard panel thickness : 2 mm
(.078) max.
- Total travel : 2 mm (.078)
- Operating temperature :
-40°C to +85°C

13000 series

Professional quick-break momentary pushbutton switches

Specifications

RELIABILITY - RUN-IN TEST

Upon request, each individual switch can be submitted to a low level run-in test of 50 or 250 cycles to ensure suitability for special applications requiring a very high level of reliability (military, space, etc.).

AGENCY APPROVALS/PREFERENTIAL LISTS



CECC 96401-001

QPL (Europe only)

MUAHAG

Designed to **MIL** specifications

Availability :

UL : all models with silver or gold plated silver contacts

CECC : consult factory for details of approved models.

Marking : to order switches marked UL or CECC, complete appropriate box of ordering format.

Preferential lists do not appear on the switches.

Dimensions : first dimensions are in mm while inches are shown as bracketted numbers.



Sealing boots are available to protect the switches against dust and water. They are presented in section H.



Mounting accessories : standard hardware supplied with all models : 2 hex nuts 8 mm (.314) across flats, 1 locking ring and 1 lockwasher.

Standard and special hardware available are presented in section I.



Packaging unit : 50 pieces.

13000 series

Professional quick-break momentary pushbutton switches

Overview

MODEL
STRUCTURE

13

SERIES

Terminals and bushing

- 2** Straight PC terminals, bushing \varnothing 6,35 (1/4)
- 4** Solder lugs, bushing \varnothing 6,35 (1/4) or 11,9 (15/32)
Right angle terminals, bushing \varnothing 6,35 (1/4)

No of poles

- 3** Single pole
- 4** Double pole

Electrical function

5 ON - MOM

Terminals

- Blank** Solder lugs or straight PC depending on model
- W** Right angle, horizontal mounting

OPTIONS

Contact materials

- A** Silver
- AD2** Silver, gold plated (2 micron gold)
- CD** Brass, gold plated

Finish

- Blank** Bright chrome finish
- G** Matt black finish on bushing, plunger and hardware

Special options

- Blank** No special requirement
- F** Tin dipped term. (for PC term. only)
- X640** Reinforced sealing by three O-rings
- X768** Bushing \varnothing 11,9 (15/32) + front panel sealing (double pole only)

Caps

- U900** \varnothing 5 (.196)
 - U1140** \varnothing 8 (.314)
 - U1720** \varnothing 9,4 (.370)
 - U480** \varnothing 10 (.393) std
 - U630** \varnothing 15 (.590)
 - U2430** Square, height 4 (.157)
 - U2020** Square, height 6 (.236)
- For models with \varnothing 4 (.157) plunger only.

Plungers

- Blank** Standard for \varnothing 6,35 (1/4) bushing
- 4** 4 mm (.157) long, for \varnothing 11,9 (15/32) bushing (X768)
- 9** 9 mm (.354) long, for \varnothing 11,9 (15/32) bushing (X768)

Sealing

- Blank** Epoxy sealed terminals standard
 - K** Front panel sealing by one O-ring and sealing washer
- Reinforced sealing, see X640 under "Special options".

Approvals

- UL**
 - CECC**
- Availability :
Consult factory for details of approved models.



NOTICE : please note that not all combinations of above numbers are available. Refer to the following pages for further information.

ABOUT THIS SERIES

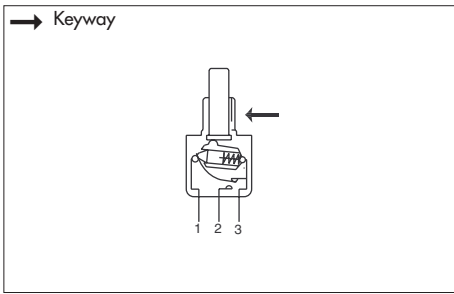
- On the following pages, you will find successively :
- model structure of switches
 - options in the same order as in above chart



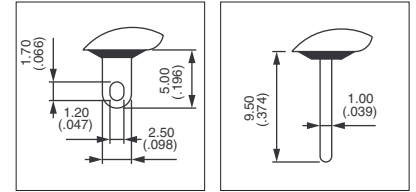
13000 series

Professional quick-break momentary pushbutton switches

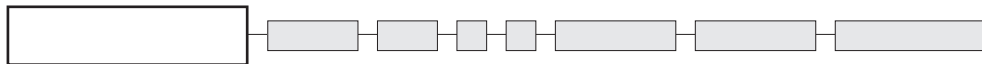
Solder lug terminals : 13400 - Straight PC terminals : 13200



- Threaded bushing $\varnothing 6,35$ mm (1/4)
- Epoxy sealed terminals standard



MODEL STRUCTURE



B

Solder lug terminals : 13400

→ Keyway



Single pole
13435

Double pole
13445



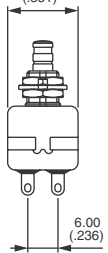
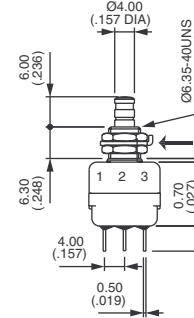
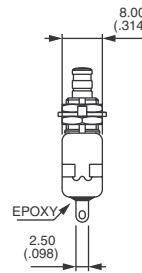
1-3

ON



1-2

MOM



Straight PC terminals : 13200

→ Keyway



Single pole
13235

Double pole
13245



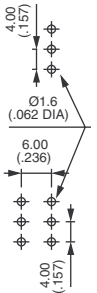
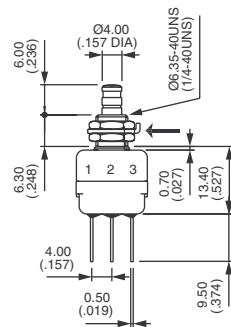
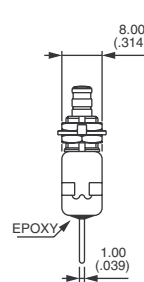
1-3

ON



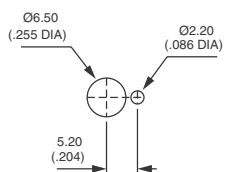
1-2

MOM

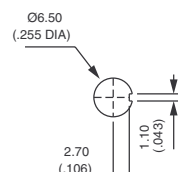


PANEL CUT-OUT

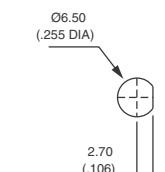
13400 - 13200



Standard



With K
sealing option



With X640
sealing option

13000 series

Professional quick-break momentary pushbutton switches

Right angle terminals : 13400W

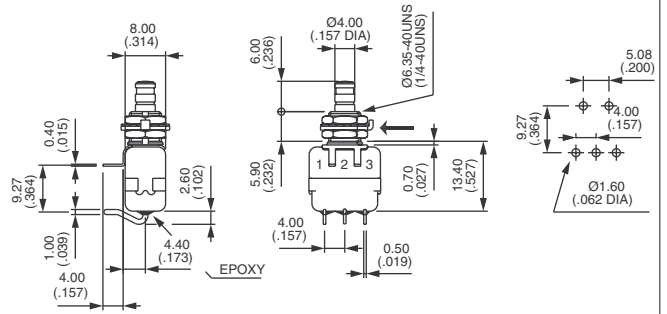
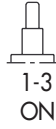


Right angle terminals - single pole

→ Keyway



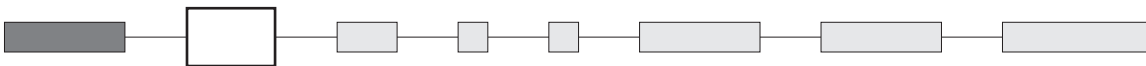
13435W



B

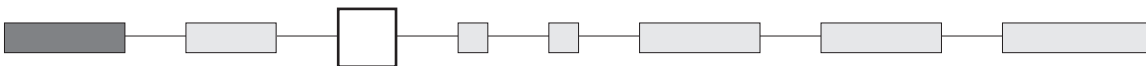
Panel cut-out, see previous page.

CONTACT MATERIALS



- A Silver
- AD2 Silver, gold plated (2 micron gold)
- CD Brass, gold plated

PLUNGER



Dash compulsory before plunger code.

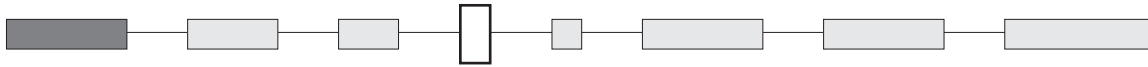
- Blank Standard plunger for Ø 6,35 (1/4) bushing
- 4 4 mm (.157) long plunger for Ø 11,9 (15/32) bushing (X768 option)
- 9 9 mm (.354) long plunger for Ø 11,9 (15/32) bushing (X768 option)



13000 series

Professional quick-break momentary pushbutton switches

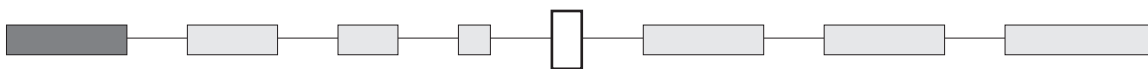
FINISH



Blank Bright chrome finish

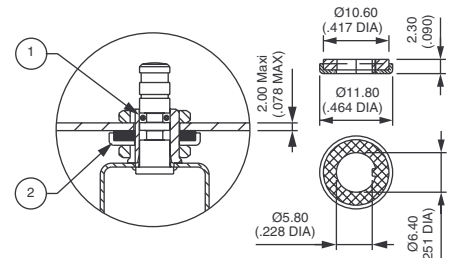
G Matt black finish on bushing, actuator and hardware

SEALING



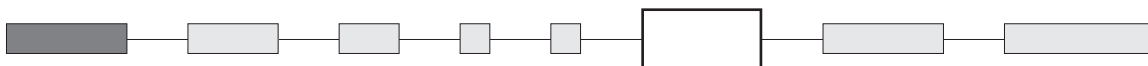
K Front panel sealing by one O-ring and sealing washer. Protects the switch against water and dust. Panel seal withstands 1 bar pressure and remains sealed even when switch is operated.

Reinforced sealing : see X640 under "Special options".




- ① O-ring
- ② Sealing washer

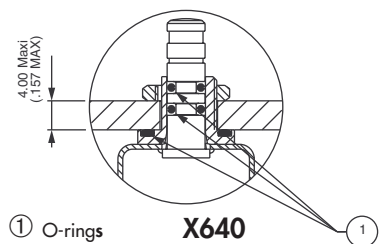
SPECIAL OPTIONS



F **Tin dipped terminals**
For PC terminal models with gold plated contacts only.

X640 Front panel sealing by three O-rings. Flatted bush for precise orientation. Protects the switch against water and dust. Panel seal withstands 1 bar pressure and remains sealed even when switch is operated.

 Available on models with Ø 6,35 (1/4) bushing only.



- ① O-rings
- X640**

X935 C-ring on plunger for positive stop

13000 series

Professional quick-break momentary pushbutton switches



X768 Sealed switch with $\varnothing 11,9$ (15/32) flatted bushing. Solder lug terminals, double pole. Contact and finish options available.

B



With short plunger
13445 -4 X768

With long plunger
13445 -9 X768



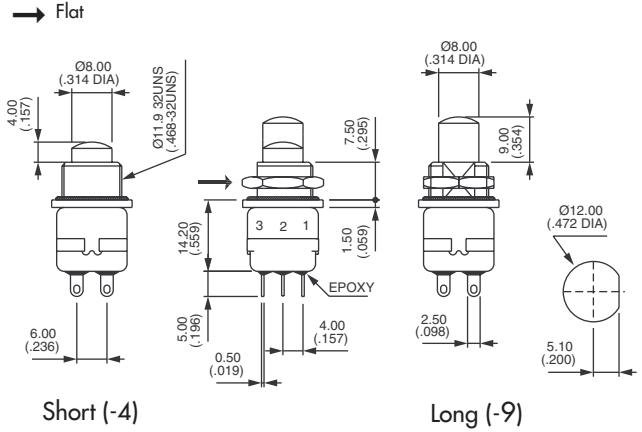
ON



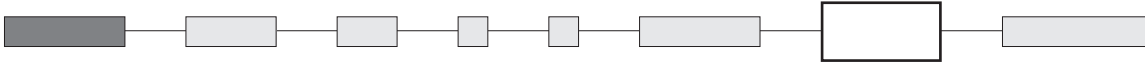
MOM

ON

MOM



AGENCY APPROVALS



UL

CECC CECC 96401-001

Availability :

UL : all models with silver or gold plated silver contacts

CECC : consult factory for details of approved models.

Marking : to order switches marked UL or CECC, please complete above box with desired approval.

Blank : no agency approval required.

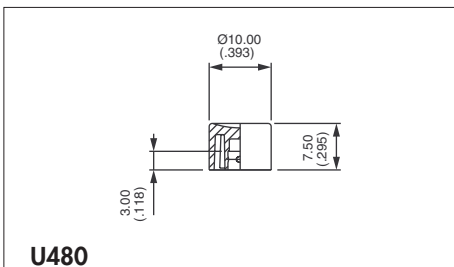
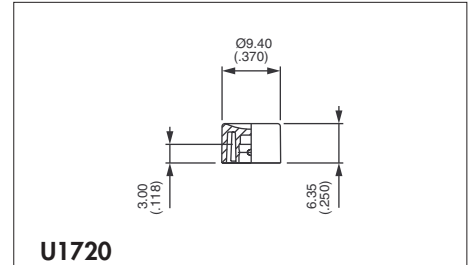
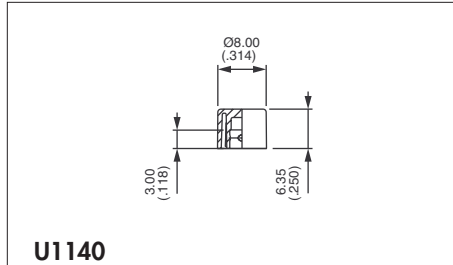
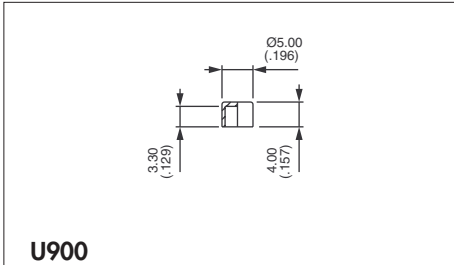
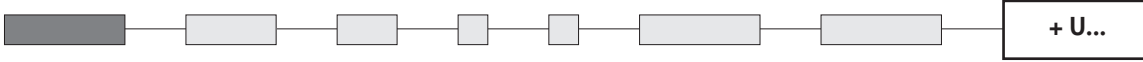
Preferential lists : see specifications.



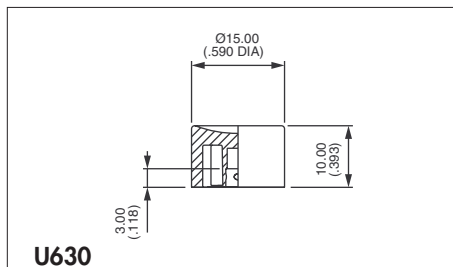
13000 series

Professional quick-break momentary pushbutton switches

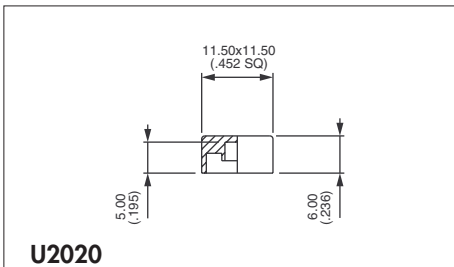
CAPS



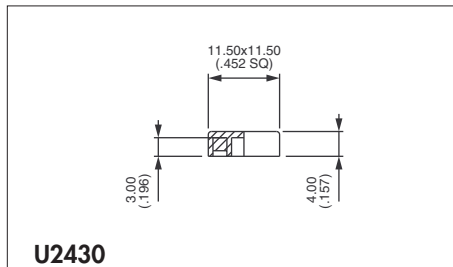
Standard



For models with Ø 6,35 (1/4) bushing only.



Square



Square

Cap colours

Replace last "0" by number

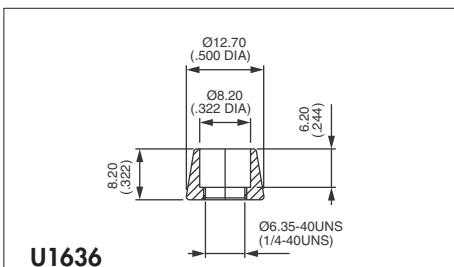
- 1 blue
- 1/4 dark blue
- 2 black
- 3 green
- 4 grey
- 5 yellow
- 6 red
- 7 ivory
- 7/1 white
- 9 orange

DRESS NUTS

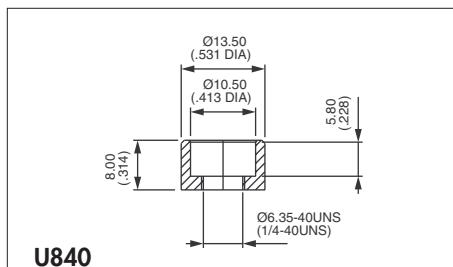
Chrome plated



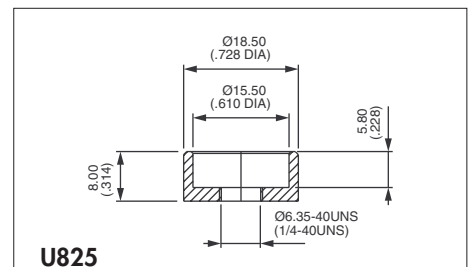
For models with Ø 6,35 (1/4) bushing only.



For cap U1140



For cap U480



For cap U630

Dress nuts are to be ordered separately.

X-ON Electronics

Largest Supplier of Electrical and Electronic Components

Click to view similar products for [Pushbutton Switches](#) category:

Click to view products by [Apem](#) manufacturer:

Other Similar products are found below :

[8940K2012](#) [LW1L-M1C10V-A](#) [LW1L-M1C70-A](#) [LW2L-A1C20M-GD](#) [LW2L-M1C20M-A](#) [60324L](#) [M22-D-R-GB0/K11](#) [M7E-HRN2](#)
[67021K512](#) [67081K512X](#) [701PB580](#) [7199K101](#) [810K12910](#) [810KSV30B](#) [MML21EA2ADK](#) [MML21KA3ABK](#) [MML23KA3AC05K-001](#)
[MML23KW3AA01W](#) [8418K2](#) [8442K2](#) [8442K3](#) [8450K1](#) [860K11911T01A](#) [861901](#) [861K11911T01A07](#) [861K13810T00A14](#) [861K13911](#)
[8646AB6X718UL](#) [8646ABUL](#) [9001KXRK](#) [907AYY100](#) [PMHD155A1](#) [9533CD4+U574+U4922](#) [95-414.000](#) [99-450.837](#) [99-453.837](#)
[PV3H2B0NN-341](#) [1203MRA](#) [A22NZBGANGA](#) [A22NZBMMNGA](#) [A22NZBNANGA](#) [A22NZMPATRA](#) [A2PMA1X03EC56](#) [A3A-5123-02](#)
[A3A-7140](#) [A3A-7310](#) [A3A-7340](#) [A3U-TMW-A2C-5M](#) [A595](#) [12037A2ULCSA](#)