

660 series

Power toggle switches • metal lever



DISTINCTIVE FEATURES

- Four pole models
- High current/voltage rating
- Screw terminals



ELECTRICAL SPECIFICATIONS

- Max. current/voltage rating with resistive load : 10 A 30 VDC
- Decrease by 50 % for inductive load
- Initial contact resistance : 10 mΩ max.
- Insulation resistance : 1,000 MΩ min. at 500 VDC
- Dielectric strength : 2,500 Vrms 50 Hz min. between terminals
2,500 Vrms 50 Hz min. between terminals and frame
- Electrical life : 10,000 cycles at full load



GENERAL SPECIFICATIONS

- Torque : 1.50 Nm (1.10 Ft.lb) max. applied to nut.
- Panel thickness : 4.5 mm (.177) max.
- Operating temperature : -20 °C to +55 °C (-4 °F to +131 °F)



MATERIALS

- Case : melamine/polyester
- Actuator : brass, nickel plated
- Bushing : brass, nickel plated
- Contacts silver



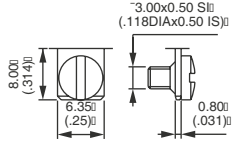
The company reserves the right to change specifications without notice.

660 series

Power toggle switches • metal lever



TERMINALS

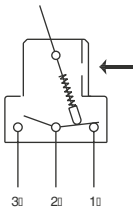


Screw (standard)

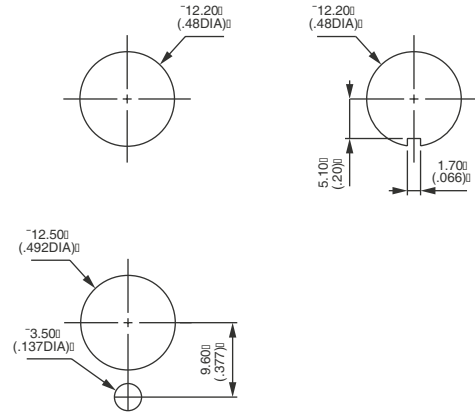


ELECTRICAL FUNCTIONS

→ KEYWAY



PANEL CUT-OUT

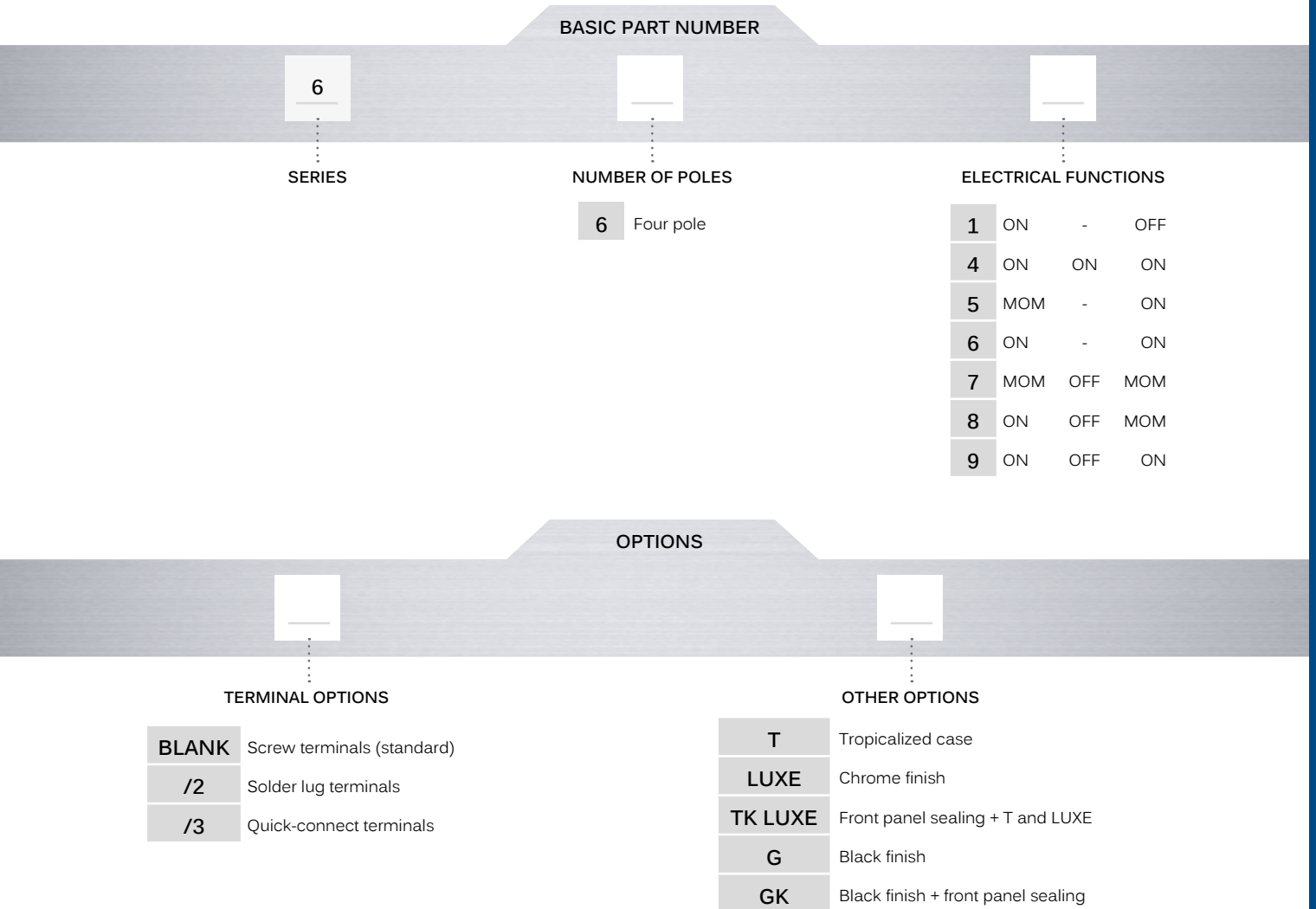


660 series

Power toggle switches • metal lever



BUILD YOUR PART NUMBER



ABOUT THIS SERIES

On the following page, you will find successively basic part numbers of switches and options.

Mounting accessories : Standard hardware supplied with all models: 1 hex nut U166, 1 knurled nut U411 and 1 lockwasher U13. Standard and special hardware is presented in the "Accessories" section of website..

660 series

Power toggle switches • metal lever

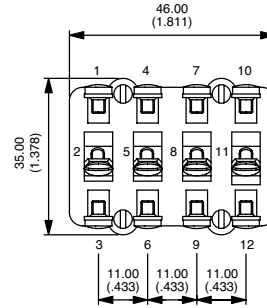
FOUR POLE



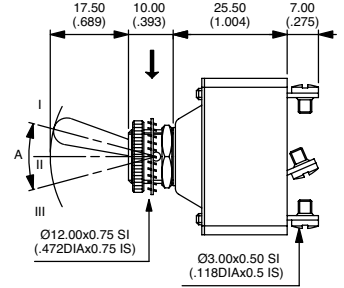
BASIC P/N	A	III 2-1*	II	I 2-3**
661	20°	ON	-	OFF
664 *	28°	ON	ON	ON
665	20°	MOM	-	ON
666	20°	ON	-	ON
667	20°	MOM	OFF	MOM
668	20°	ON	OFF	MOM
669	28°	ON	OFF	ON

* (2-1) (5-4) (8-7) (11-10) ** (2-3) (5-6) (8-9) (11-12)

→ KEYWAY



A = Angle of throw

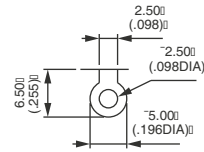


* See "Technical information" on website.

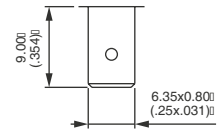
TERMINAL OPTIONS



- Blank Screw terminals (standard)
- /2 Solder lug terminals
- /3 Quick-connect terminals 6.35 x 0.8 (.250 x .031)



/2



/3

LOCKING LEVERS



- T Tropicalized diallylphthalate case (-40 °C to +85 °C) (-40 °F to +185 °F)
- LUXE Chrome plated lever and cap nut U117
- TK LUXE Options T and LUXE + front panel sealing by O-ring and sealing washer. See 600H series.
- G Black finish on bushing, lever and nuts. Includes tropicalization (option T).
- GK Option G + front panel sealing by O-ring and sealing washer.

X-ON Electronics

Largest Supplier of Electrical and Electronic Components

Click to view similar products for [Toggle Switches](#) category:

Click to view products by [Apem](#) manufacturer:

Other Similar products are found below :

[8928K478](#) [020017-13](#) [60012L](#) [6006L](#) [CS115W](#) [CS120W](#) [637H/25](#) [6663](#) [7101SPDV30BE](#) [7103SDV30BE](#) [7105D](#) [7108P3YAV2BE](#)
[71YY50282](#) [7300K36](#) [7301K38](#) [7306K36](#) [7310K36](#) [7506K4](#) [7592K6](#) [7660K12](#) [7691K14](#) [7700K1](#) [8391K108](#) [8396K108](#) [8824K14](#)
[8828K13](#) [8835K3](#) [8858K44](#) [PS83-121G](#) [1-1825192-0](#) [A201SCWZB04](#) [A207SYCB04](#) [A208J61ZQ0004](#) [A221T1TCQ](#) [A232M1YCQ](#)
[A323S1CWZQ](#) [A423S1CWZG-M8](#) [1201W](#) [12156AX408](#) [12147AGKX679](#) [12246X778](#) [12TW49-3D](#) [130312](#) [13037L](#) [13001X](#)
[AE101MD1W4B04](#) [AE208SD1W4B04](#) [MS24659-22D](#) [MS27407-5](#) [1520230-9](#)