

8000 series

Momentary or alternate action pushbutton switches

Distinctive features and specifications

UG1410A



Bushing \varnothing 6,35 (1/4) and \varnothing 11,9 (15/32)

UL approved

B2

ELECTRICAL SPECIFICATIONS

- Max. current/voltage rating with resistive load :
 - silver contacts : 4A 30VDC
 - gold plated contacts : 0,4VA max. 20VAC or DC
- Initial contact resistance : 10 m Ω max.
- Insulation resistance : 1.000 M Ω min. at 500VDC
- Dielectric strength :
 - 1.000 Vrms 50 Hz min. between terminals
 - 2.000 Vrms 50 Hz min. between terminals and frame
- Electrical life : 30.000 cycles at full load

MATERIALS

- Case : diallylphthalate (DAP)
- Actuator : brass, nickel plated
- Bushing : brass, nickel plated
- Housing : stainless steel
- Contacts
 - A : silver
 - AD : silver, gold plated
 - CD : brass, gold plated
- Terminal seal : epoxy

GENERAL SPECIFICATIONS

- Torque : 1,25 Nm (.922 Ft.lb) max. applied to nut
- Total travel : 2,70 mm (.106)
- Operating temperature : -40°C to +85°C

AGENCY APPROVAL



Availability : consult factory for details of approved models.

Marking : to order switches marked UL, complete appropriate box of ordering format.

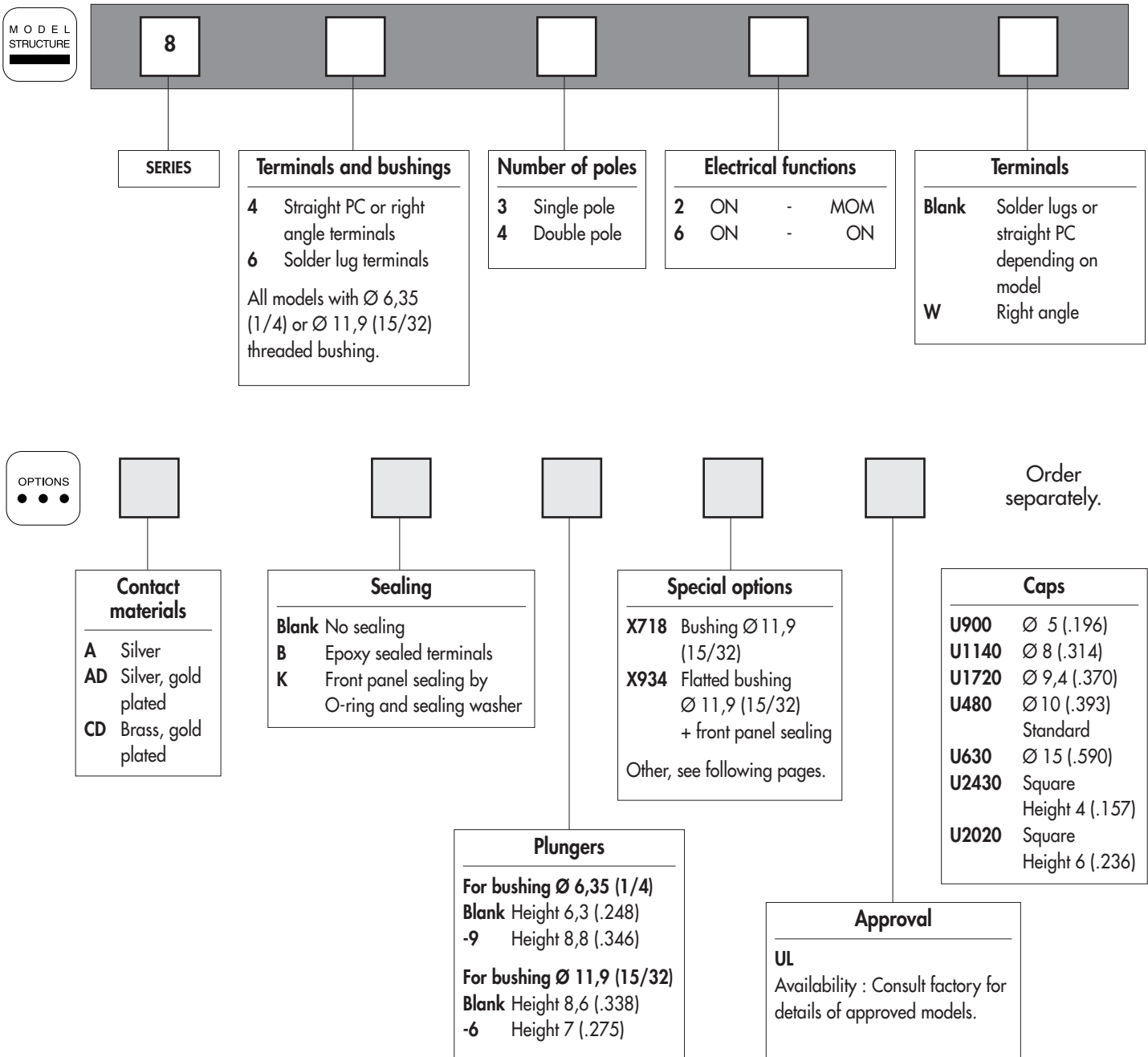
The company reserves the right to change specifications without notice.

8000 series

Momentary or alternate action pushbutton switches

Overview

B2



ABOUT THIS SERIES

On the following pages, you will find successively :
 - model structure of switches
 - options in the same order as in above chart

Dimensions : first dimensions are in mm while inches are shown as bracketed numbers.



Sealing boots are available to protect the switches against dust and water. They are presented in section H.



Mounting accessories : standard hardware supplied with all models : 2 hex nuts 8 mm (.314) across flats, 1 locking ring and 1 lockwasher. Standard and special hardware available are presented in section I.

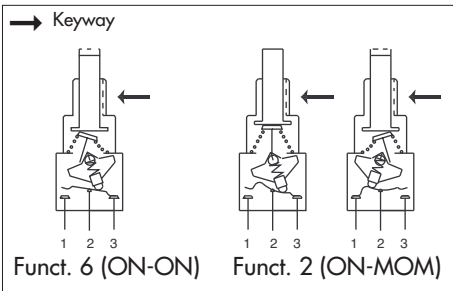
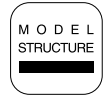


Packaging unit : 50 pieces, except 8000W (25 pieces).

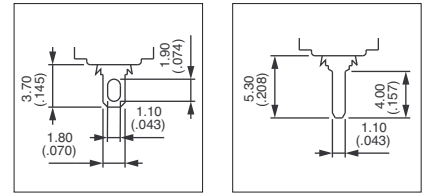
8000 series

Momentary or alternate action pushbutton switches

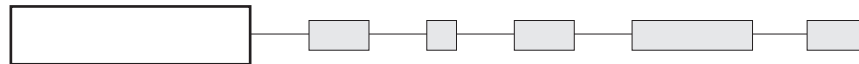
Threaded bushing $\varnothing 6,35 (1/4)$



- Solder lug, straight PC or right angle terminals
- 1 and 2 pole configurations
- Button returns in upper position after actuation.



MODEL STRUCTURE



Shown with standard plunger

B2

Solder lug terminals : 8600



Single pole
8632
8636

Double pole
8642
8646



ON

MOM
ON

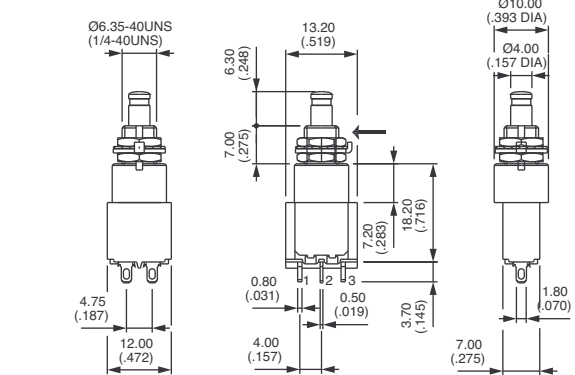
2-3
5-6

1-2
4-5

ON

MOM
ON

→ Keyway



Straight PC terminals : 8400



Single pole
8432
8436

Double pole
8442
8446



ON

MOM
ON

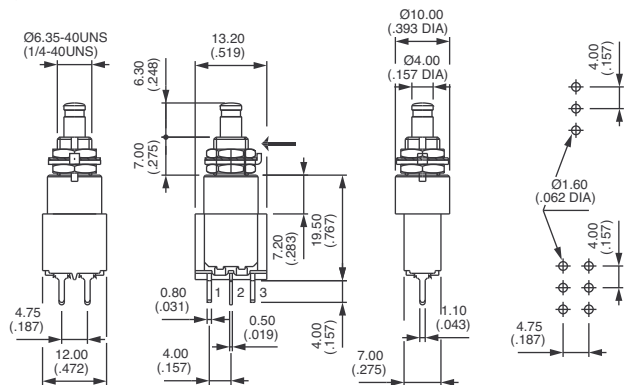
2-3
5-6

1-2
4-5

ON

MOM
ON

→ Keyway



Right angle terminals - horizontal : 8400W



Single pole
8432W
8436W

Double pole
8442W
8446W



ON

MOM
ON

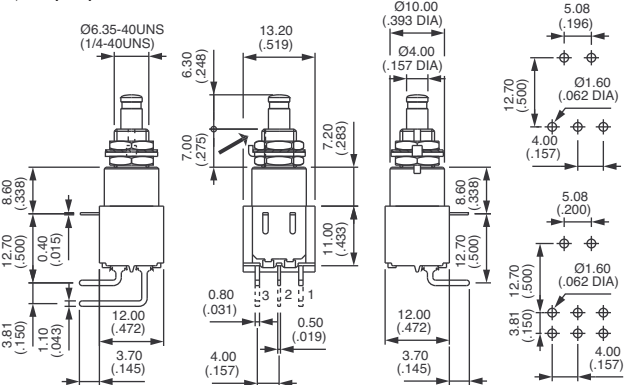
2-3
5-6

1-2
4-5

ON

MOM
ON

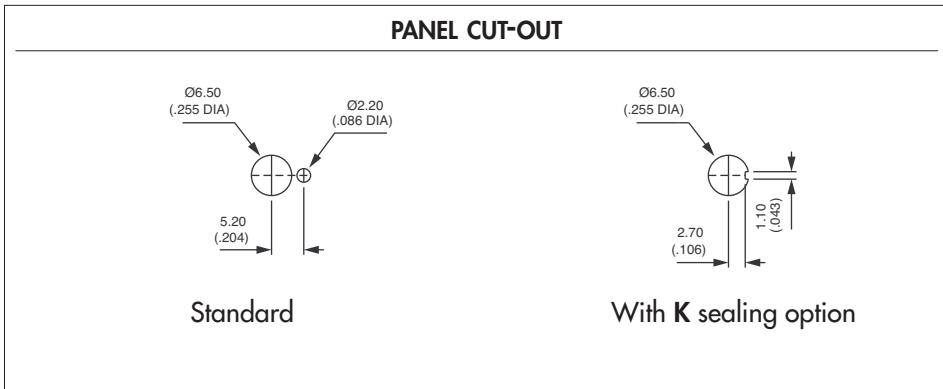
→ Keyway





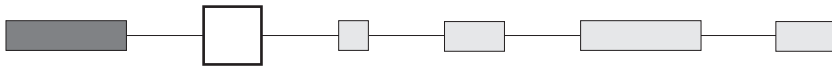
8000 series

Momentary or alternate action pushbutton switches



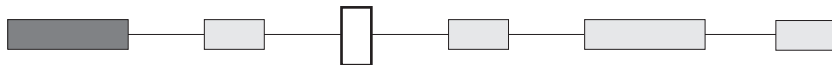
B2

CONTACT MATERIALS

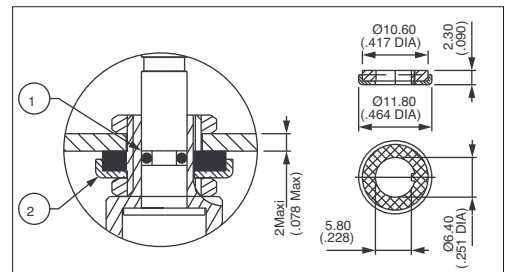


- A** Silver
- AD** Silver, gold plated
- CD** Brass, gold plated

SEALING



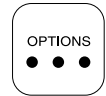
- Blank** No sealing
 - B** Epoxy sealed terminals
 - K** Front panel sealing by one O-ring and sealing washer. Protects the switch against water and dust. Panel seal withstands 1 bar pressure.
 - KB** Combined sealings
- Sealing boot : see section H.



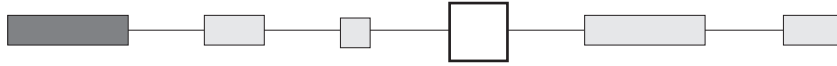
- ① O-ring
- ② Sealing washer

8000 series

Momentary or alternate action pushbutton switches

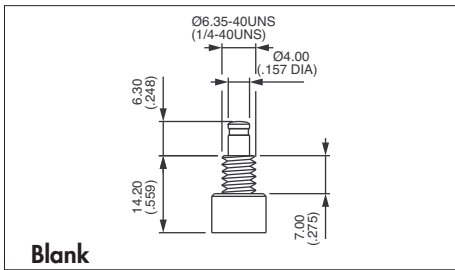


PLUNGERS



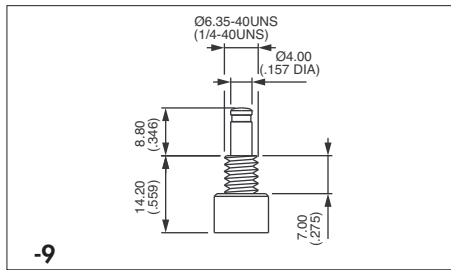
For \varnothing 6,35 (1/4) bushing

Dash compulsory before plunger code.



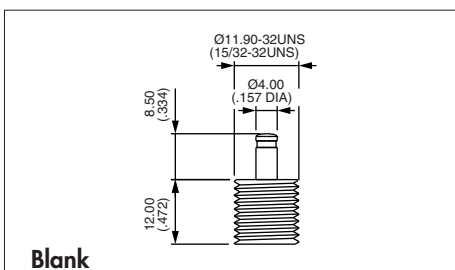
Blank

Standard

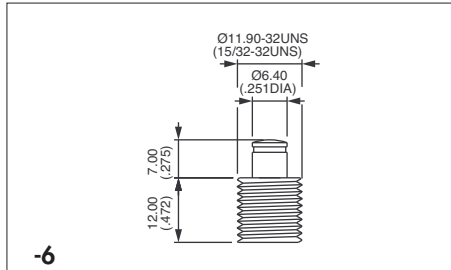


-9

For \varnothing 11,9 (15/32) bushing (X718 models)

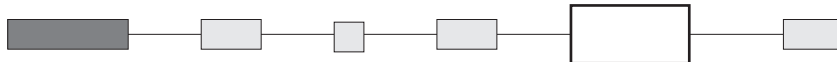


Blank



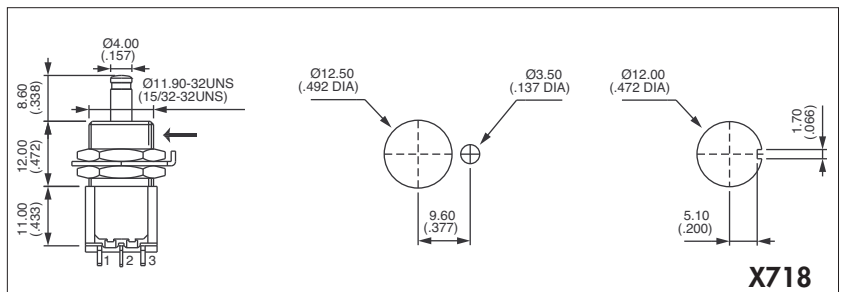
-6

SPECIAL OPTIONS



X601 Silver plated brass contacts
 Current/voltage rating for an electrical life of 20.000 cycles : 0,5A 30VDC.
 Minimum quantity : 5.000 pieces per model and shipment.

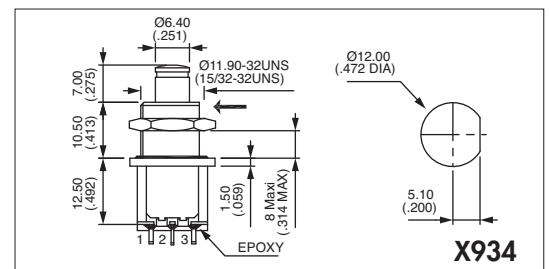
X718 Bushing \varnothing 11,9 (15/32)
 For all basic models (solder lug straight PC or right angle terminals)
 Available with plungers 13 and 6.
 K sealing option available.



X718

X748 Snap-in mounting. Consult factory
 Panel cut-out 15 x 12,5 (.59 x .492)

X934 Flatted bushing \varnothing 11,9 (15/32) + sealing by two O-rings
 (for plunger -6 only). Epoxy sealed terminals.



X934

→ Keyway or flat

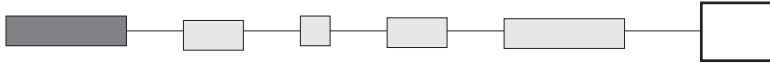
8000 series

Momentary or alternate action pushbutton switches



B2

APPROVAL



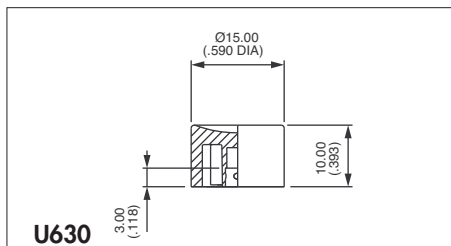
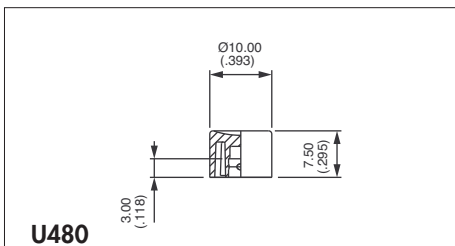
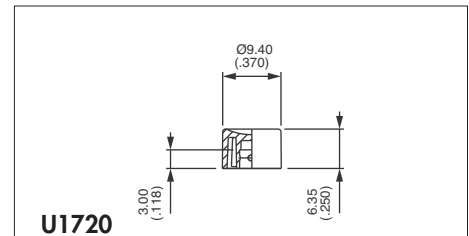
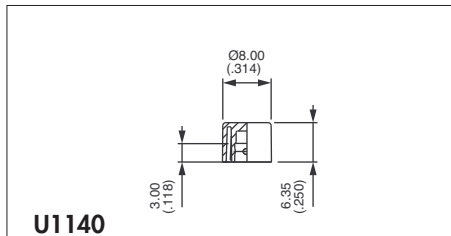
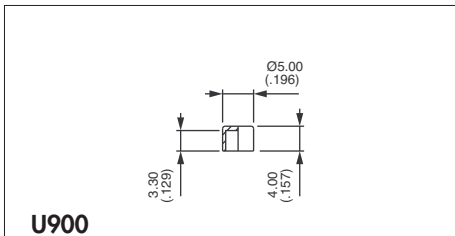
UL

Availability : consult factory for details of approved models.
Marking : to order switches marked UL, complete above box with "UL".

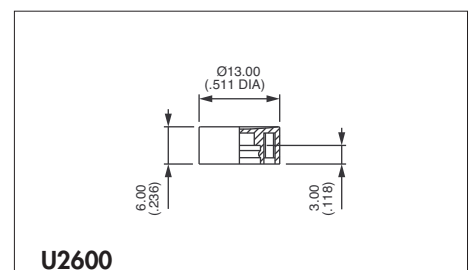
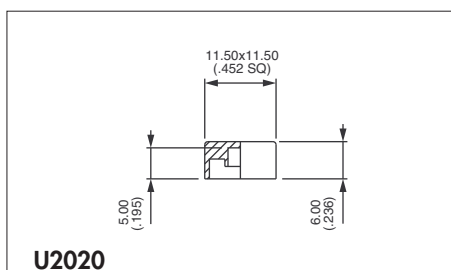
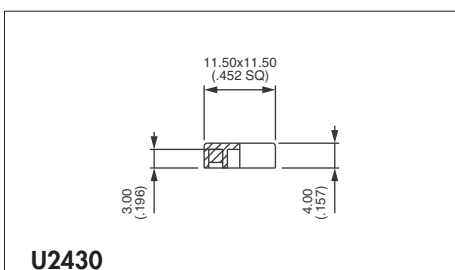
CAPS

Order separately.

The caps below are for Ø 4 mm plungers (standard and -9), except U2600.

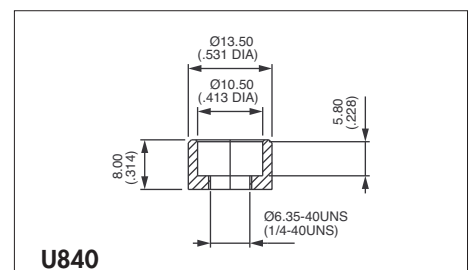
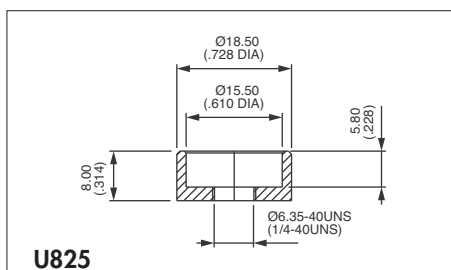
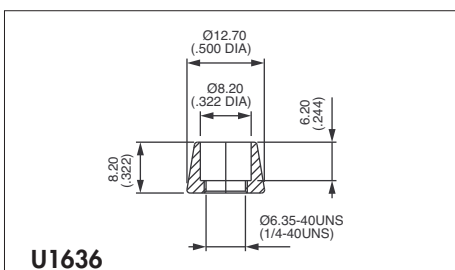


| Cap colours | | | |
|----------------------------|-----------|-----|--------|
| Replace last "0" by number | | | |
| 1 | blue | 5 | yellow |
| 1/4 | dark blue | 6 | red |
| 2 | black | 7 | ivory |
| 3 | green | 7/1 | white |
| 4 | grey | 9 | orange |



DRESS NUTS

Chrome plated. Order separately.



X-ON Electronics

Largest Supplier of Electrical and Electronic Components

Click to view similar products for [Apem manufacturer](#):

Other Similar products are found below :

[M11L061M](#) [M11L0C1P](#) [M21L0E1C](#) [M31C081P](#) [M31L081R](#) [MAA6B](#) [MAB6B](#) [8642AKB](#) [A0109X](#) [A0142M5](#) [Q16F1BXXR12E](#)
[Q6P1BXXY12E](#) [Q6R1CXXY24E](#) [Q8R1CXXG24](#) [Q8R7CXXSG24E](#) [R2201C2NBB](#) [HF10P10](#) [HF46Y10](#) [1212MRA](#) [HFX44S00](#)
[132459X778](#) [13445A4GX768](#) [13445A9GX768](#) [DSR04T](#) [AV090003A900](#) [AV9SLD2011001K](#) [MSS22](#) [ICR3FAD2](#) [1D09034](#) [1F096](#) [1K11](#)
[IPC1FAD3L0S](#) [IPR3FAD6L0G](#) [IPR3SAD1L0G](#) [NZAA0477](#) [IRP3F422](#) [2641LP/2A23301L110V3](#) [9533NCDK4](#) [LP1503N20V00SHIM](#)
[LPI3124G1K247XX](#) [A0273](#) [SN101RS](#) [SN201SS](#) [FG2035](#) [1F091](#) [SX03516](#) [1ZC03](#) [2SS09-08.0](#) [Q16F1BXXW24E](#) [Q16F1CXXR24E](#)