

# A02ES-H series

High-security emergency stop switches •  
panel cut-out Ø 22 mm



## DISTINCTIVE FEATURES

### Built-in safety

Approved to EN 60947-5-5, UL 508 and CSA C22.2 No 14-10

Pull or twist to release

AC-12, 3 A 250 VAC / DC-12, 2 A 30 VDC

Panel sealed to IP65

The A02ES-H series has been designed to ensure the highest security level. By design, this product has a failsafe modular construction. Many other emergency stop switches are not failsafe and rely on butt action contacts: the NC contacts remain closed until the actuator is pressed. Therefore, if the switch is damaged, destroyed or assembled incorrectly, the contacts remain closed.

On the A02ES-H, if the operator or switch block become separated, the circuit will open.



## ELECTRICAL SPECIFICATIONS

- Electrical function : push to shut off, pull or twist to release
- Current/voltage rating - NC contacts :  
AC-12, 3 A 250 VAC  
AC-15, 1.5 A 250 VAC  
DC-12, 2 A 30 VDC  
DC-13, 1 A 30 VDC
- Current/voltage rating - NO contacts :  
AC12, 0.6 A 250 VAC  
AC14, 0.3 A 250 VAC  
DC12, 2 A 30 V / 1 A 30 VDC
- Electrical life : 100,000 cycles
- Insulation resistance : 100 MΩ min.
- Dielectric strength : contact block 2,500 Vrms
- Contacts : gold plated silver



## ENVIRONMENTAL SPECIFICATIONS

- Front panel sealing : IP65
- Terminals IP20 (finger safe)
- Operating temperature : -25 °C to +60 °C (-13 °F to +140 °F)
- Storage temperature : -45 °C to +80 °C (-49 °F to +176 °F)

The company reserves the right to change specifications without notice. Not for sale in Japan.



# A02ES-H series

High-security emergency stop switches • panel cut-out Ø 22 mm



## GENERAL SPECIFICATIONS

- Panel thickness : 6 mm (.236) max.
- Low level or mechanical life : 250,000 cycles
- Recommended torque : 2 Nm
- Switch terminals : M3 screws



## OPERATING FORCE

- Push to shut off : 32 N
- Pull to release : 21 N
- Turn to release : 0.27 Nm
- Minimum force to direct opening action : 80 N

## AGENCY APPROVALS



UL 508  
CSA 22.2 No 14-10



EN 60947-5-5

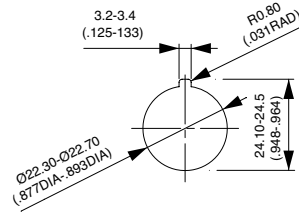


## ABOUT THIS SERIES

- **Mounting accessories :**  
standard hardware supplied : 1 nut and 1 flat panel seal



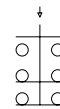
## PANEL CUT-OUT



## ELECTRICAL FUNCTIONS



Double pole  
Normally closed



Double pole NC  
+ single pole NO

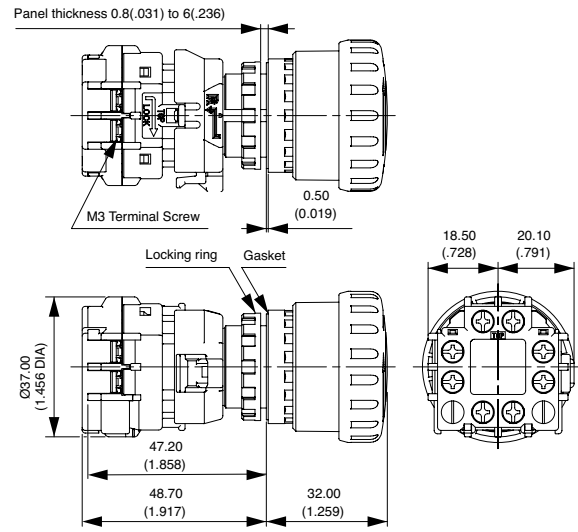
# A02ES-H series

High-security emergency stop switches • panel cut-out Ø 22 mm

## DOUBLE POLE, NORMALLY CLOSED



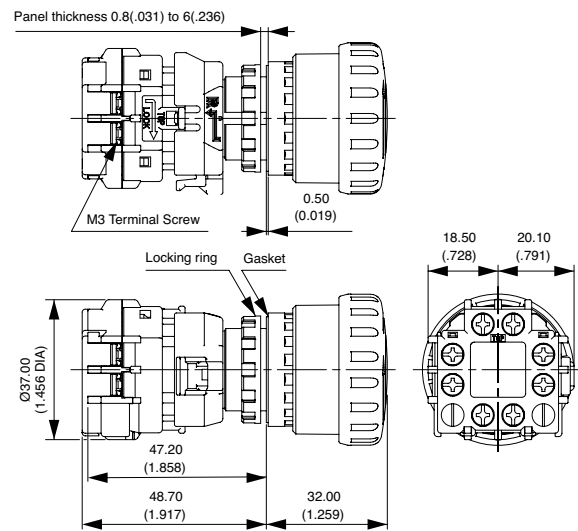
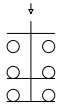
A02ESH3B102IX0



## DOUBLE POLE, NORMALLY CLOSED + SINGLE POLE, NORMALLY OPEN



A02ESH3B112IX0

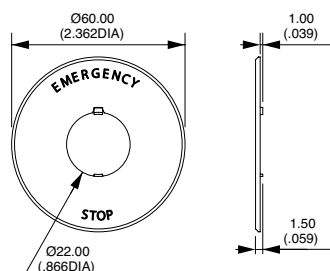


## ACCESSORIES

Order separately.

Ø 60 MM NAME PLATE

A02-U27Y



Legend "EMERGENCY STOP" is indicated outside a Ø 44 mm circle.

# A02ES-H series

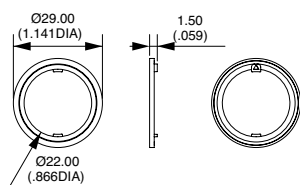
High-security emergency stop switches •  
panel cut-out Ø 22 mm

## ACCESSORIES (CONTINUED)

Order separately.

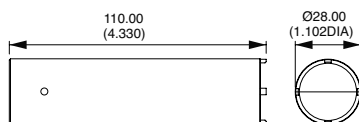
### ANTI-ROTATION RING

A02-U9ZRL



### LOCKING RING WRENCH

A02-U9ZT1



## X-ON Electronics

Largest Supplier of Electrical and Electronic Components

*Click to view similar products for [Emergency Stop Switches / E-Stop Switches](#) category:*

*Click to view products by [Apem](#) manufacturer:*

Other Similar products are found below :

[84-6830.0020](#) [AVN302N-R](#) [3050.1302Y](#) [44-710](#) [ZA2BV05](#) [951FY000-WO](#) [ER6022-022N](#) [952+2000-00](#) [ES3S51653001](#) [601+0000-OP](#)  
[E100-A2A22S05A](#) [FD 593-M2](#) [SR AL40ALK](#) [XCSA802](#) [XCSB502](#) [AZM 161SK-12/12RIA-024-B1](#) [84-5141-2B40](#) [84-6820.0020A](#) [84-](#)  
[6820.0040](#) [XY2CH13250H29](#) [XCSDMR590L01M12](#) [XCSTA892](#) [XCSMP80L5](#) [FB1W-HW1B-M220B](#) [FB1W-HW1B-X401R](#) [84-](#)  
[5221.2B20](#) [AYD311NUS](#) [AZM KEY \(M5\)](#) [AZ 17/170-B15](#) [TESZ1102/S](#) [AZM 161SK-12/12RKA-110/230](#) [AZM 415-11/11ZPK 24VAC/DC](#)  
[AZM 161-B1S](#) [AZ 15/16-B1-2245](#) [AZ 17/170-B11](#) [AZ 17-11ZI B5](#) [BNS 40S-12Z 10,0M](#) [AZ 16-02ZVRK-ST](#) [AZ/AZM 415-B2](#) [AZ/AZM](#)  
[415-B3](#) [BNS 260-02Z-L](#) [MZM 100-B1.1](#) [A-K8P-M12-S-G-5M-BK-2-X-A-4-69](#) [A-K8P-M12-S-G-10M-BK-2-X-A-4-69](#) [A-K5P-M12-S-G-](#)  
[10M-BK-2-X-A-4-69](#) [A-K4P-M12-S-G-2M-BK-2-X-A-4-69](#) [AZ/AZM201-B30-LTAG1P1](#) [SK-BETÄTIGER M3](#) [SK-BET.M4 KPL. M.KAP.](#)  
[BETÄTIGER A1 KPL.](#)