

A02ES-I series

Emergency stop switches

Distinctive features and specifications



Approved to EN 60947-5-5, UL 508 and CSA C22.2 No 14-10

Industrial range

A02ESI1701A-R2

Pull or twist to release

AC-12, 6A 240VAC / DC-12, 8A 24VAC

Panel sealed to IP65

Illuminated model

ELECTRICAL SPECIFICATIONS

- Electrical function : push to shutt off, pull or twist to release
- Current/voltage rating : AC-12, 10A 24VAC / 6A 240VAC
DC-12, 8A 24VDC
AC-15, 10A 24VAC / 3A 240VAC
DC-13, 4A 24VDC
- Electrical life : 100.000 cycles with one contact block
- Insulation resistance : 50 MΩ min.
- Dielectric strength : contact block 2.500 Vrms
- Contacts : silver

GENERAL SPECIFICATIONS

- Panel thickness : 6 mm (.236) max.
- Low level or mechanical life : 250.000 cycles w. one contact block
- Operating temperature
-20°C to +55°C
- Switch terminals : M3.5 screws

ENVIRONMENTAL SPECIFICATIONS

- Front panel sealing : IP65

AGENCY APPROVALS

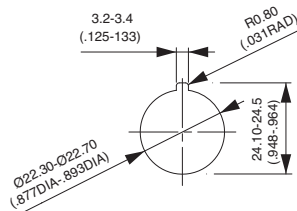


UL 508
CSA C22.2 No 14-10

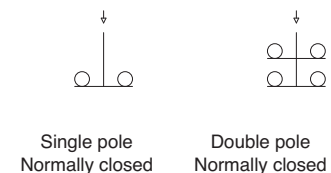
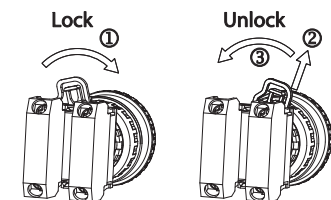


EN 60947-5-5

PANEL CUT-OUT



MOUNTING LOCKING SYSTEM



Mounting accessories : Standard hardware supplied : 1 nut and 1 flat panel seal



Packaging unit : box of 5 pieces

The company reserves the right to change specifications without notice - Not for sale in JAPAN.

A02ES-I series

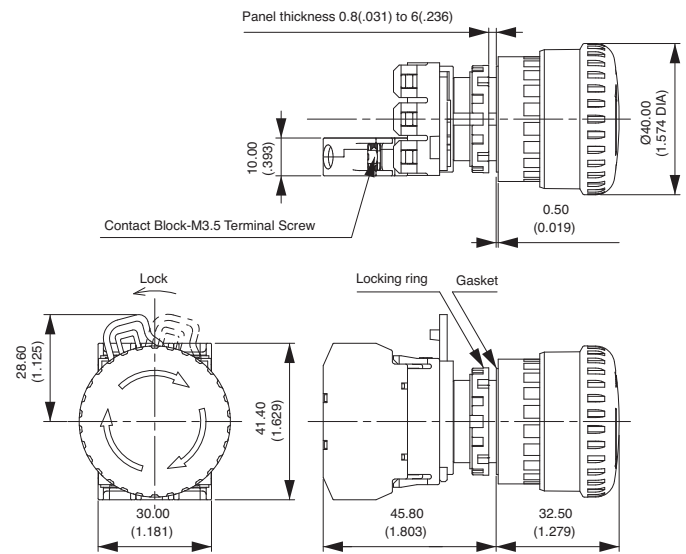
Emergency stop switches

Panel cut-out Ø 22 (.866)

Single pole - Normally closed



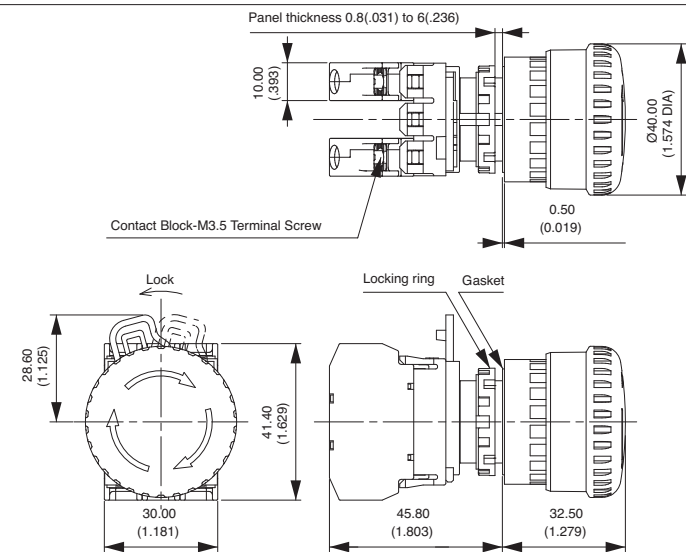
A02ES13B101IX0



Double pole - Normally closed



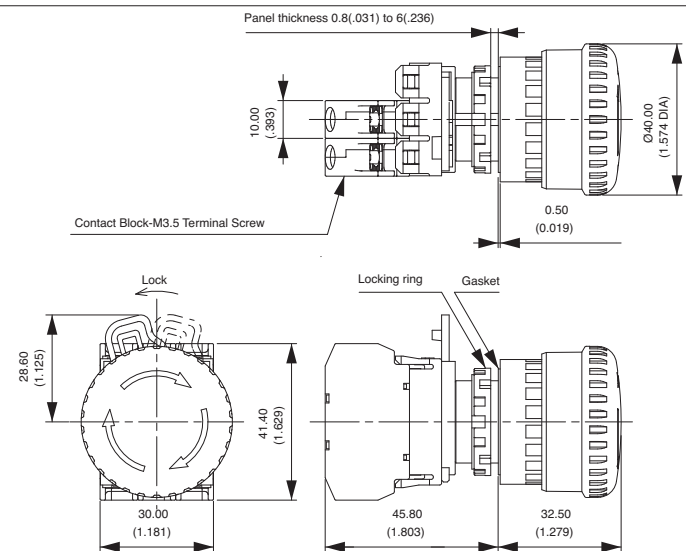
A02ES13B102IX0



Single pole - Normally closed - illuminated



With LED 24V
A02ES14B101IR2

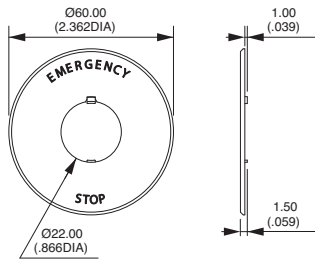


A02ES-I series

Emergency stop switches

Accessories

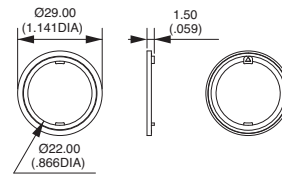
Ø 60 mm name plate



Legend "EMERGENCY STOP" is indicated outside a Ø 44 mm circle.

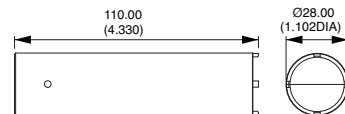
A02-U27Y

Anti-rotation ring



A02-U9ZRL

Locking ring wrench



A02-9ZT1

X-ON Electronics

Largest Supplier of Electrical and Electronic Components

Click to view similar products for [apem](#) manufacturer:

Other Similar products are found below :

[48](#) [TW11GRY1](#) [SLB13814](#) [SLC120025](#) [DA04T](#) [Q6F1CXXB24](#) [SLG12004](#) [SLB1281R5](#) [DPL-02](#) [DA08](#) [5D15F1534](#) [M11L0A1M](#)
[M11L0B1M](#) [M21L0E1C](#) [M31L0M1M](#) [CW-A0BK1A00A0](#) [MAB6B](#) [A019101](#) [A019305](#) [A019409](#) [A029301](#) [A1PCA0X106J103](#)
[Q16F1BXXR12E](#) [Q22F1BXXY12E](#) [Q22F1CXXB24E](#) [Q22F1CXXG12E](#) [Q8P1BXXY110E](#) [Q8P3BXXG12E](#) [Q8P7BZZRYG12E](#)
[Q8R3BXXG02E](#) [121442RA](#) [HF-33S10](#) [HF44R11](#) [HF45R10](#) [HFX44S00](#) [DMR10](#) [DSR04T](#) [AV0830C900](#) [AV19810KMZB](#) [MSS22](#)
[BD150A01RE0000](#) [BD150D02BK1200](#) [HS1T24GA](#) [1D09034](#) [1Z03](#) [1ZZ](#) [NZAA0477](#) [NZAA1475](#) [NZAB1475](#) [NZAB1477](#)