

# A02ES-I series

Emergency stop switches •  
panel cut-out Ø 22 mm



## DISTINCTIVE FEATURES

Approved to EN 60947-5-5, UL 508 and CSA C22.2 No 14-10

Pull or twist to release

AC-12, 6 A 240 VAC / DC-12, 8 A 24 VDC

Panel sealed to IP65

Illuminated model available



## ELECTRICAL SPECIFICATIONS

- Electrical function : push to shut off, pull or twist to release
- Current/voltage rating :  
AC-12, 10 A 24 VAC / 6 A 240 VAC  
DC-12, 8 A 24 VDC  
AC-15, 10 A 24 VAC / 3 A 240 VAC  
DC-13, 4 A 24 VDC
- Electrical life : 100,000 cycles with one contact block
- Insulation resistance : 100 MΩ min.
- Dielectric strength : contact block 2,500 Vrms
- Contacts : silver

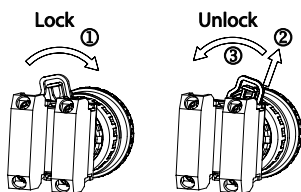


## GENERAL SPECIFICATIONS

- Front panel sealing : IP65
- Terminal IP20 (fingersafe)
- Panel thickness : 6 mm (.236) max.
- Low level or mechanical life : 250,000 cycles w. one contact block
- Operating temperature : -20 °C to +55 °C (-4 °F to +131 °F)
- Switch terminals : M3.5 screws



## MOUNTING LOCKING SYSTEM



The company reserves the right to change specifications without notice. Not for sale in Japan.



# A02ES-I series

Emergency stop switches •  
panel cut-out Ø 22 mm

## AGENCY APPROVALS



UL 508  
CSA C22.2 No 14-10



EN 60947-5-5

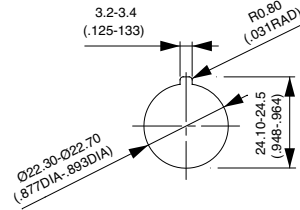


## ABOUT THIS SERIES

- **Mounting accessories :**  
standard hardware supplied : 1 nut and 1 flat panel seal



## PANEL CUT-OUT



## ELECTRICAL FUNCTIONS



Single pole  
Normally closed



Double pole  
Normally closed



Three pole  
Normally closed

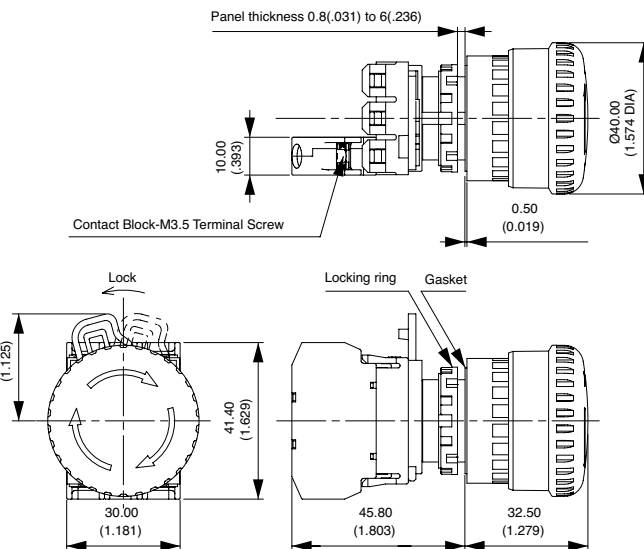
# A02ES-I series

Emergency stop switches • panel cut-out Ø 22 mm

## SINGLE POLE - NORMALLY CLOSED



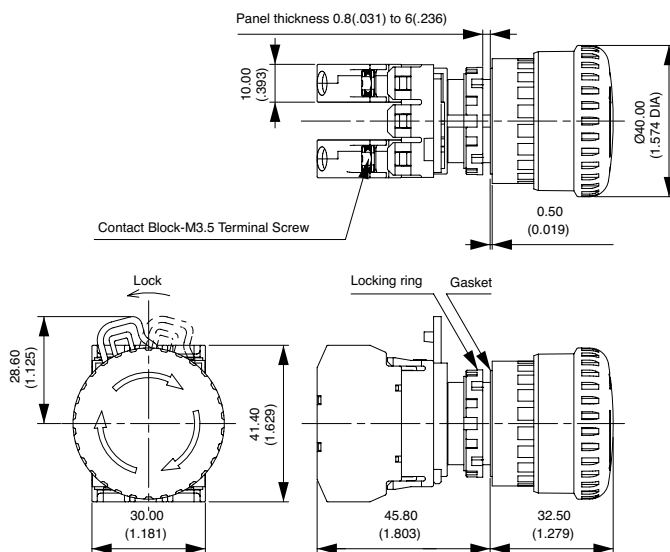
A02ESI3B101IX0



## DOUBLE POLE - NORMALLY CLOSED



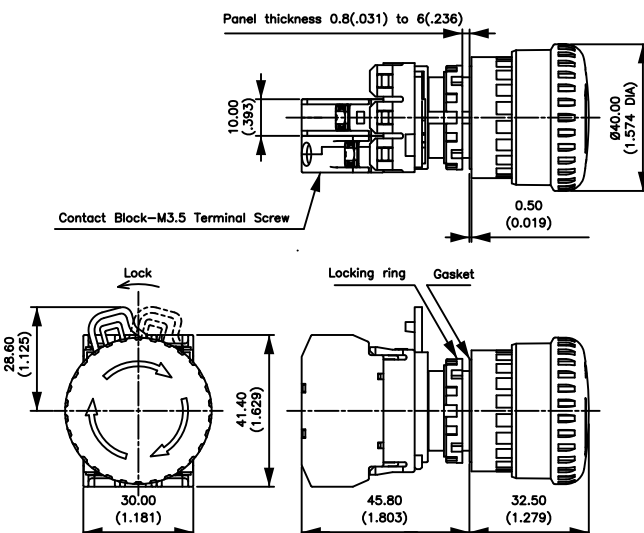
A02ESI3B102IX0



## SINGLE POLE - NORMALLY CLOSED ILLUMINATED



With LED 24V  
A02ESI4B101IR2



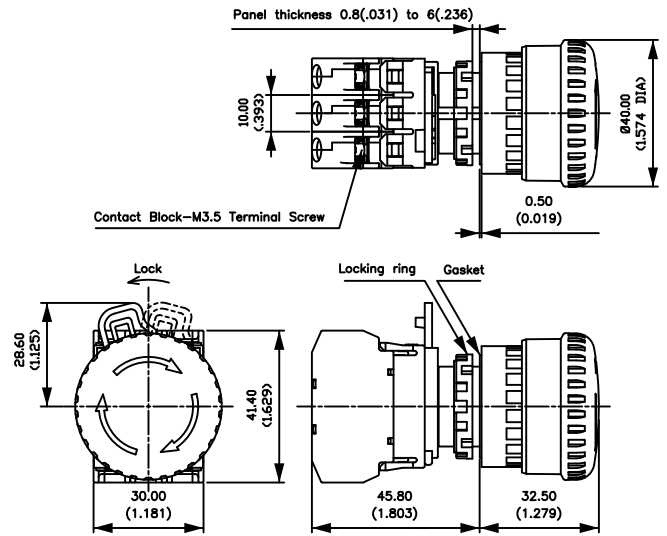
# A02ES-I series

Emergency stop switches •  
panel cut-out Ø 22 mm

THREE POLE – NORMALLY CLOSED



A02ESI3B103IX0

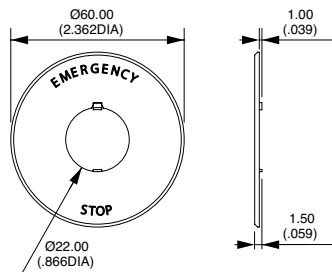


## ACCESSORIES

Order separately.

Ø 60 MM NAME PLATE

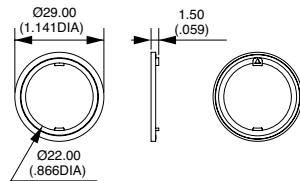
A02-U27Y



Legend "EMERGENCY STOP" is indicated outside a Ø 44 mm circle.

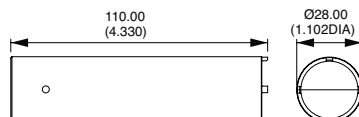
ANTI-ROTATION RING

A02-U9ZRL



LOCKING RING WRENCH

A02-U9ZT1



## X-ON Electronics

Largest Supplier of Electrical and Electronic Components

*Click to view similar products for [Emergency Stop Switches / E-Stop Switches](#) category:*

*Click to view products by [Apem](#) manufacturer:*

Other Similar products are found below :

[84-5021.2B40](#) [84-6830.0020](#) [A01ESSP8](#) [A22EL-M-24A-11B](#) [AVN302N-R](#) [A165E-S-01\(STOP\)](#) [AYLD2212602SN-R-TK962](#)  
[AVLD39911N-R-24V](#) [A22Z-EG22](#) [A165E-SY](#) [3100.0110Y](#) [3050.1302Y](#) [3SE2243-0XX40](#) [3SK1111-2AB30](#) [3SK1211-1BB40](#) [44-710](#) [84-](#)  
[6841.2B20](#) [84-6830.0040](#) [H3141AAKAA](#) [A165E-R-24D-01](#) [E3102AAAAB](#) [A22E-M-03](#) [ZA2BV05](#) [A22EL-M-T2-01](#) [951FY000-WO](#)  
[ER6022-022N](#) [952+2000-00](#) [ES3S51653](#) [601+0000-OP](#) [E3101AAAAB](#) [84-5130.0040](#) [CS AR-05V024](#) [CS AR-22V024](#) [DS AE1VA](#) [DS](#)  
[KB2A](#) [DS KB3A](#) [HE2G-21SHE-L-K](#) [HE6B-M211Y](#) [774191](#) [774316](#) [777760](#) [R1.100.0129.0 SMA0129- NO/NO](#) [R1.188.0640.0 SNV](#)  
[4063KL-A](#) [R1.188.1810.0 SNA 4043K-A](#) [R1.188.1840.0 SNA 4043K-A](#) [SR BD40ALK-B02F](#) [AVLW39911D-R-120V](#) [AYD311NUG](#)  
[AVLD32211DNUR](#) [84-5040.0020.0049](#)