

# MISCELLANEOUS HARDWARE & ACCESSORIES

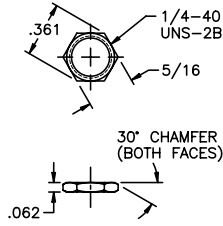
**SWITCH HARDWARE.....V2**  
**PUSHBUTTON AND TOGGLE CAPS.....V2 - V3**  
**SECURITY GUARDS.....V3**

SPECIFICATIONS SUBJECT TO CHANGE WITHOUT NOTICE

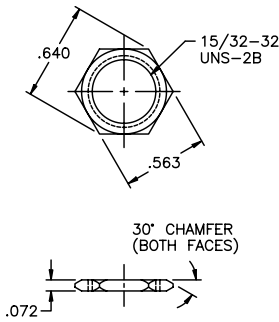


# MISCELLANEOUS HARDWARE

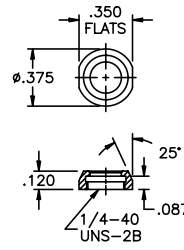
**HEX NUT A112** Nickel plated brass  
1/4-40



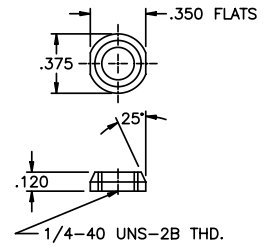
**HEX NUT A465**  
Nickel plated brass 15/32-32



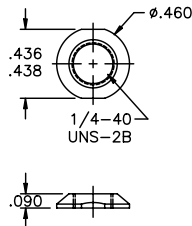
**PANEL DRESS NUT A168P1**  
Blind thread, Nickel plated brass  
1/4-40



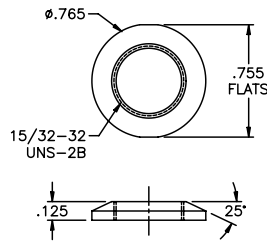
**PANEL DRESS NUT A168P2**  
Thru thread, Nickel plated brass  
1/4-40



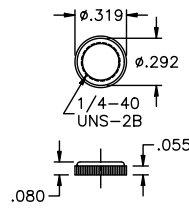
**PANEL DRESS NUT A274**  
Nickel plated brass 1/4-40



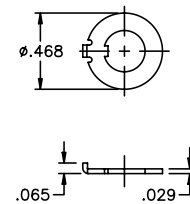
**PANEL DRESS NUT A540**  
Nickel plated brass 15/32-32



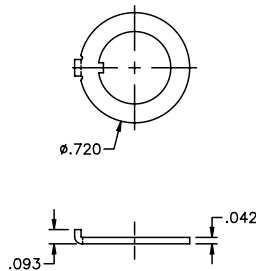
**DECORATIVE NUT A447**  
Thru thread, chromium plated brass  
1/4-40



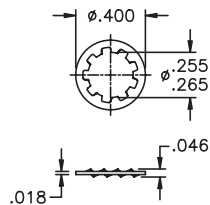
**ANTI-ROTATE RING (LARGE) A158**  
Nickel plated brass 1/4



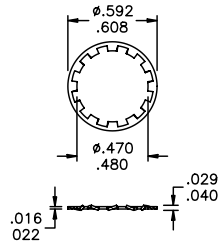
**ANTI-ROTATE RING A482**  
Nickel plated brass 15/32



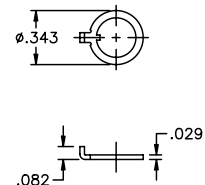
**LOCKWASHER A115**  
Nickel plated steel 1/4



**LOCKWASHER A466**  
Nickel plated steel 15/32



**ANTI-ROTATE RING A107**  
Nickel plated brass 1/4

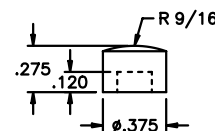


**PUSHBUTTON CAPS (ALL)**

Material - Nylon

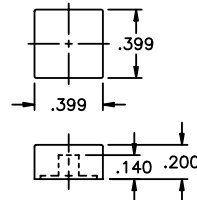
Caps press fit adequately, however they may be pulled off. If permanent retention is required, cement with Loctite 405 or equivalent, insuring no cement enters switch.

**PUSHBUTTON CAP A212**



FITS PB SERIES

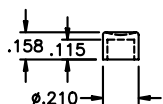
**COLOR CAPS B366 & B497**



**B366** fits 300 & 400 Series with S option only, and all PB Series.

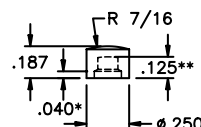
**B497** fits 800 Series with options KM, KS, KM1, K1M1 & K2M1.

**PUSHBUTTON CAPS A180 & A496**



**A180** fits all PB Series.  
**A496** fits 800 Series with options KM, KS, KM1, K1M1, K2M, K2S & K2M1.

**PUSHBUTTON CAP A235**



\* - fits all PB, 300 & 400 Series.

\*\* - fits 800 Series with options KM, KS, KM1 & K2M1.

**STANDARD COLOR CODE**

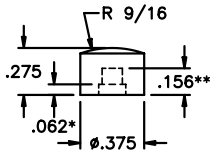
For nylon caps, actuators, bezels & bezel inserts. To specify, add selected color code to part number. Example: A2122 is a black A212 Cap. To specify for actuators, bezels and bezel inserts, see 'Order Format' section following specific series information in this catalog.

Code	Color	Code	Color
1	blue	2	black
3	green	4	gray
5	yellow	6	red
7	ivory	8	white
9	orange		

SPECIFICATIONS SUBJECT TO CHANGE WITHOUT NOTICE

## MISCELLANEOUS HARDWARE (CONT'D.)

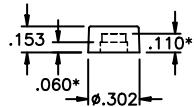
### PUSHBUTTON CAP A420



\* - Fits all 300 Series except 301 & 305. Fits 301 & 305 with S option. Fits all 400 & PB Series.

\*\* - Fits 800 Series with options KM, KS, KM1 & K2M1.

### COLOR CAP B494

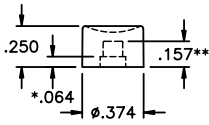


\*\* - P1 fits all 800 Series except K1M & K1S.

\* - P2 fits all 300 & 400 Series.

\* - P3 fits all PB Series.

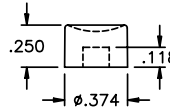
### PUSHBUTTON CAP A631



\* - Fits all 300 Series except 301 & 305. Fits 301 & 305 with S option. Fits all 400 & PB Series.

\*\* - Fits 800 Series with options KM, KS, KM1 & K2M1.

### PUSHBUTTON CAP A632



Fits all PB Series.

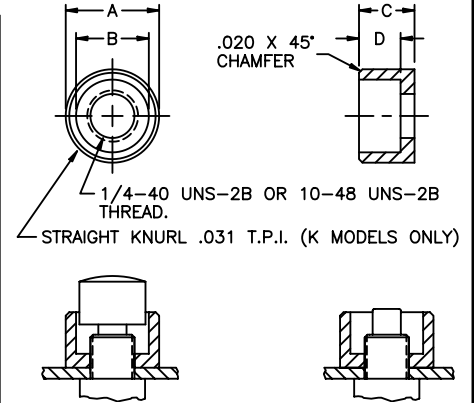
## CUSTOM MARKING

Permanent ink marking is available for switch caps, bezels and rocker actuators. Consult factory with your special requirement. Representative samples available.

## SWITCH GUARDS

Materials: 5056-H18 aluminum with clear or black anodize, or free machining brass with bright chrome plate. Dimensions in inches and (millimeters). Tolerances: A & D, ±.015" B & C, ±.005"

MODEL	TH'D.	COLOR	FINISH	A	B	C	D
<b>MG11A</b>	10-48	NATURAL AL.	PLAIN				
<b>MG11B</b>	10-48	BLACK AL.	PLAIN				
<b>MG12A</b>	1/4-40	NATURAL AL.	PLAIN				
<b>MG12B</b>	1/4-40	BLACK AL.	PLAIN	.530 (13.5)	.413 (10.5)	.315 (8.0)	.236 (6.0)
<b>MG12C</b>	1/4-40	CHROMED BR.	PLAIN				
<b>MG12KA</b>	1/4-40	NATURAL AL.	KNURLED				
<b>MG12KB</b>	1/4-40	BLACK AL.	KNURLED				
<b>MG12KC</b>	1/4-40	CHROMED BR.	KNURLED				
<b>MG13A</b>	1/4-40	NATURAL AL.	PLAIN				
<b>MG13B</b>	1/4-40	BLACK AL.	PLAIN	.730 (18.5)	.610 (15.5)	.315 (8.0)	.236 (6.0)
<b>MG13C</b>	1/4-40	CHROMED BR.	PLAIN				



### STANDARD COLOR CODE

For nylon caps, actuators, bezels & bezel inserts. To specify, add selected color code to part number. Example: A2122 is a black A212 Cap. To specify for actuators, bezels and bezel inserts, see 'Order Format' section following specific series information in this catalog.

Code	Color	Code	Color
<b>1</b>	<b>blue</b>	<b>2</b>	<b>black</b>
<b>3</b>	<b>green</b>	<b>4</b>	<b>gray</b>
<b>5</b>	<b>yellow</b>	<b>6</b>	<b>red</b>
<b>7</b>	<b>ivory</b>	<b>8</b>	<b>white</b>
<b>9</b>	<b>orange</b>		

SPECIFICATIONS SUBJECT TO CHANGE WITHOUT NOTICE

V

## X-ON Electronics

Largest Supplier of Electrical and Electronic Components

*Click to view similar products for [Screws & Fasteners](#) category:*

*Click to view products by [Apem](#) manufacturer:*

Other Similar products are found below :

[5721-1440-1/4-SS](#) [593503FX](#) [0098.0094](#) [0098.9206](#) [0098.9219](#) [0098.9262](#) [596-2114-013](#) [59781-6](#) [0098.0026](#) [0098.9210](#) [0098.9212](#) [60227-01](#) [60227-04](#) [60227-08](#) [60687-01](#) [LOCK WASHER Black](#) [62153-03](#) [62153-11](#) [M316-KSSTMCZ100](#) [M3440-SS](#) [M3442-SS](#) [M3448-SS](#) [6292-1](#) [6-306105-9](#) [6-306131-4](#) [690432-1](#) [699161-000](#) [7230-3](#) [7244](#) [7248-1](#) [7248-2](#) [745564-1](#) [F1209](#) [751-00001](#) [7680](#) [809704-1](#) [8700](#) [8860220](#) [9047](#) [9521](#) [992326-6](#) [992763-3](#) [1-18024-0](#) [1-18028-2](#) [A168P1](#) [A495P1](#) [1-24921-1](#) [125416-1](#) [1260](#) [13-0036](#) [1301810148](#)