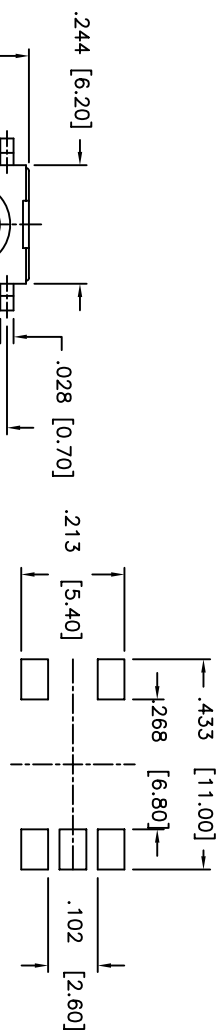
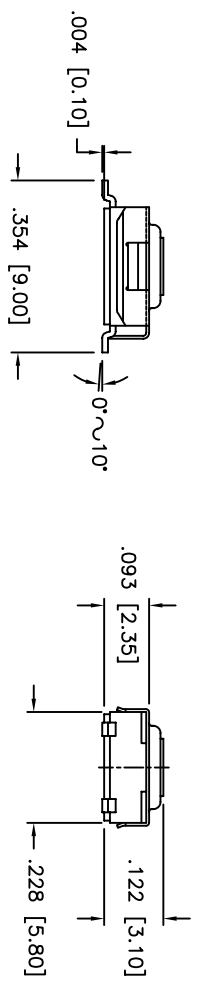
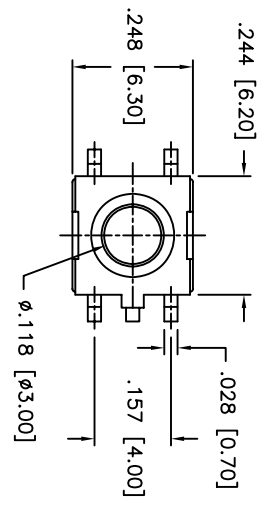


THIS DOCUMENT IS THE PROPERTY OF APDM COMPONENTS AND SHALL NOT BE COPIED, REPRODUCED, DISCLOSED OR USED AS THE BASIS FOR MANUFACTURING OR SALE WITHOUT PERMISSION OF A DULY AUTHORIZED REPRESENTATIVE OF APDM COMPONENTS INC.

DATE	SYM	REVISION RECORD	DWN.	CK.
7/05	A	ECO# 443	PD	
7/05	B	ECO# 447	PD	
1/06	C	ECO# 526	CD	
3/06	D	ECO# 555	CD	PD

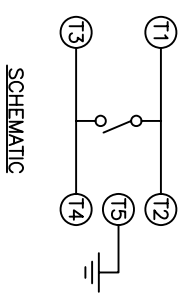


P.C. LAYOUT  
UNLESS OTHERWISE SPECIFIED  
P.C. TOLERANCES ARE ±.005 [0.13]



ADTS GMW66NSV/B  
SERIES  
G = GROUNDING  
M = SMT  
W = WASHABLE  
DIM 'H' =  
ACTUATOR COLOR =  
N = BROWN, 1609f

PACKAGING  
□ = BULK  
B = TUBE  
TR = TAPE & REEL  
SOLDERING  
V = LEAD FREE  
S.S. DOME (1,000,000 CYCLES)



DESCRIPTION: SPST, NORMALLY OPEN, MOMENTARY, 6mm X 6mm, SURFACE MOUNT, WASHABLE, TACT SWITCH WITH GROUNDING PIN

SPECIFICATIONS:  
CONTACT RATING: 50mA @ 12VDC  
CONTACT RESISTANCE: 100mOHMS MAX.  
INITIAL: 100 mOHMS MAX.  
AFTER CYCLING: 10 OHMS MAX.  
INSULATION RESISTANCE: 100MOMHS MIN. @ 500VDC  
DIELECTRIC STRENGTH: 250VAC FOR 1 MINUTE  
ELECTRICAL LIFE: 1,000,000 CYCLES MIN.  
OPERATING TEMPERATURE RANGE: -25°C to +70°C  
STOP STRENGTH: MAX 3kgf VERTICAL STATIC LOAD  
CONT. FOR 15 SEC.

ACTUATION FORCE: SEE P/N DESCRIPTION  
STORAGE TEMPERATURE RANGE: -30°C TO +80°C FOR 96 HRS  
SHOCK RESISTANCE: 50G PER METHOD 213B, MIL-STD-202F  
VIBRATION RESISTANCE: PASSES METHOD 201A, MIL-STD-202F

SOLDERING:  
IR REFLOW: 255°C MAX.  
HAND SOLDERING: 350°C MAX. FOR 5 SECONDS MAX.  
LEAD FREE PROCESS COMPATIBLE

MATERIALS:  
BASE: THERMOPLASTIC UL94V-0, COLOR BLACK  
ACTUATOR: THERMOPLASTIC UL94V-0  
COVER: NICKEL SILVER  
TERMINALS: SILVER PLATED BRASS  
SHORTING CONTACT: STAINLESS STEEL WITH SILVER CLADDING  
ROHS COMPLIANT

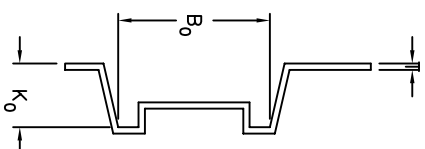
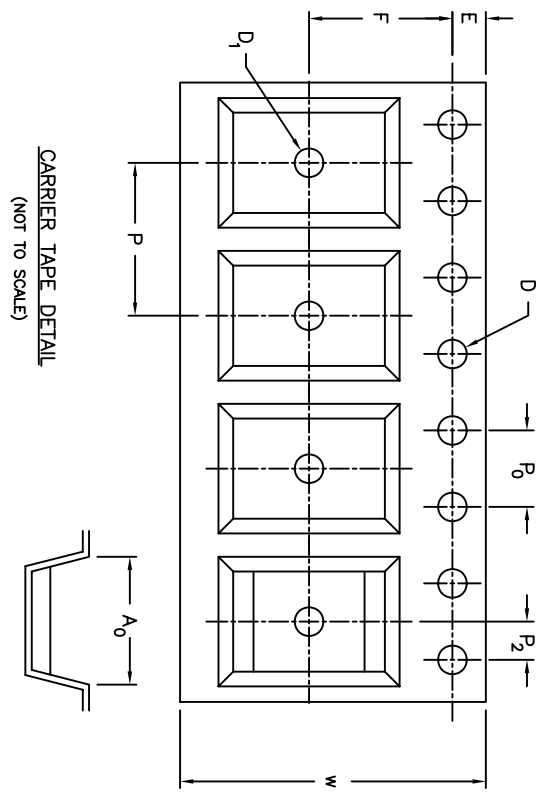
NOTE:  
1. AFTER SOLDERING, RETURN SWITCHES TO NORMAL TEMPERATURE BEFORE WASHING.

<p>Q.A. INSPECT:  63 Neck Rd. PUD Horseshoe Mill, VA 01835 Tel: 540-752-3554 Fax: 540-752-3554</p>		<p>DRN. PJD BR. BR. OR. TIM</p>
<p>DESIGNATES CRITICAL DIMENSION</p>	<p>INCH SHEET 1 OF 2 SIZE B SCALE 4:1</p>	<p>THIRD ANGLE PROJECTION</p>
<p>TOLERANCES (UNLESS OTHERWISE SPECIFIED) XXX=±.02[0.05] XX=±.008[0.20] X=±.0008[0.02] ANGLE = 30.5°</p>	<p>TITLE WASHABLE TACT SWITCH, SMT, GROUNDING</p>	<p>REV D</p>
<p>DO NOT SCALE DRAWING</p>	<p>DATE 7/8/05</p>	<p>DRAWING NO. ADTSMW66NSV*</p>

1 2 3 4 5 6 7 8

THIS DOCUMENT IS THE PROPERTY OF APEM COMPONENTS AND SHALL NOT BE COPIED, REPRODUCED, DISCLOSED OR SALE WITHOUT PERMISSION OF A DULY AUTHORIZED REPRESENTATIVE OF APEM COMPONENTS INC.

SPEC.	P/N	DTSMW-66
W	+0.012 [0.30] -0.004 [0.10]	.630 [16.00]
P	+0.004 [0.10] -0.004 [0.10]	.315 [8.00]
E	+0.004 [0.10] -0.004 [0.10]	.069 [1.75]
F	+0.004 [0.10] -0.004 [0.10]	.295 [7.50]
D	+0.004 [0.10] -0.000 [0.00]	.059 [1.50]
D <sub>1</sub>	+0.010 [0.25] -0.000 [0.00]	.059 [1.50]
P <sub>0</sub>	+0.004 [0.10] -0.004 [0.10]	.157 [4.00]
P <sub>0</sub> 10	+0.008 [0.20] -0.008 [0.20]	1.575 [40.00]
P <sub>2</sub>	+0.004 [0.10] -0.004 [0.10]	.079 [2.00]
A <sub>0</sub>	+0.004 [0.10] -0.004 [0.10]	.270 [6.78]
B <sub>0</sub>	+0.004 [0.10] -0.004 [0.10]	.373 [9.47]
K <sub>0</sub>	+0.004 [0.10] -0.004 [0.10]	.158 [4.01]
T	+0.005 [0.013] -0.005 [0.013]	.013 [0.33]



DATE	SYM	REVISION RECORD	DWN.	CK.

**Q.A. INSECT:** DESIGNATES CRITICAL DIMENSION

**TOLERANCES (UNLESS OTHERWISE SPECIFIED)**  
 .XX = ±.02 [0.05]  
 .XXX = ±.008 [0.20]  
 .XXXX = ±.0008 [0.02]  
 ANGLE = 30.5°

**APEM** APEM COMPONENTS INC.  
 63 Neck Rd. 01835  
 Hopkinton, MA  
 Phone: 508-372-5554

DRN: PJD  
 BR: CK: TIM

THIRD ANGLE PROJECTION

TITLE: WASHABLE TACT SWITCH, SMT, GROUNDING

DO NOT SCALE

DATE: 7/8/05 DRAWING NO: ADTSMW66NSV\* REV: D

1 2 3 4 5 6 7 8

## X-ON Electronics

Largest Supplier of Electrical and Electronic Components

*Click to view similar products for [Tactile Switches](#) category:*

*Click to view products by [Apem](#) manufacturer:*

Other Similar products are found below :

[5GTH92001](#) [5GTH9202242](#) [1-1977120-4](#) [ADTSA62RV](#) [ADTSA63KV](#) [ADTSA644NV](#) [ADTSMW66NV](#) [ADTSMW67RV](#) [B3F-3123](#) [B3F-6055A](#) [B3F-B32-01-KIT](#) [1977177-8](#) [1977266-1](#) [ADTS644KV](#) [ADTSA61RV](#) [ADTSA62KV](#) [ADTSA63NV](#) [ADTSA63RV](#) [ADTSM21NSVTR](#) [ADTSM32NVTR](#) [ADTSM63SVTR](#) [ADTSM644KVTR](#) [ADTSMW64RV](#) [ADTSMW69NV](#) [FSMRA4JHA04](#) [GS4.70F300QP](#) [3ESH9R](#) [506E00201](#) [MJTP1164TR](#) [3FTL600RAS](#) [3FTL640RAS](#) [Y96K132V0FPLFS](#) [101-TS5022T1601-EV](#) [5GSH92001](#) [KSJ0A231](#) [80SH LFG](#) [EVQ-P1D05K](#) [MJTP1162TR](#) [ADTSM63KV](#) [2-1977120-7](#) [TSJW-5.2-260-TR](#) [KMT011MNGJLHS](#) [ADTSA648RV](#) [70-201.0](#) [ADTSM62KSVTR](#) [ATA600VTR](#) [ADTSG66RV](#) [ADTS61NV](#) [ADTSM62KVTR](#) [ADTSM25KSVB](#) [ADTS65RV](#)