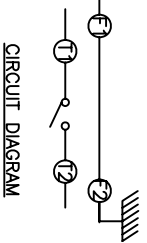
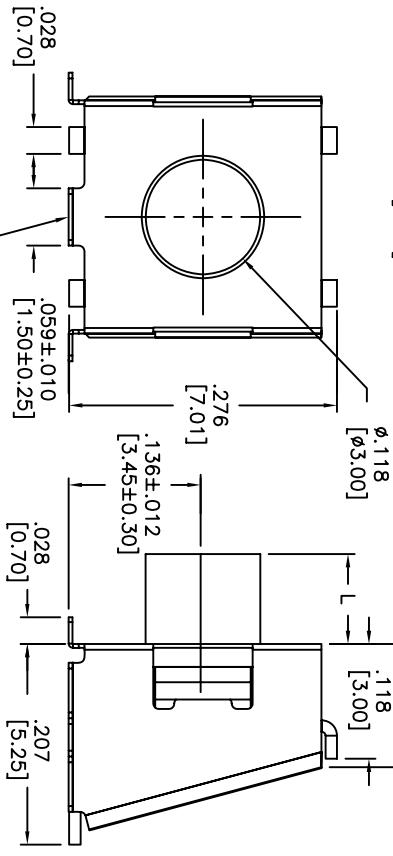
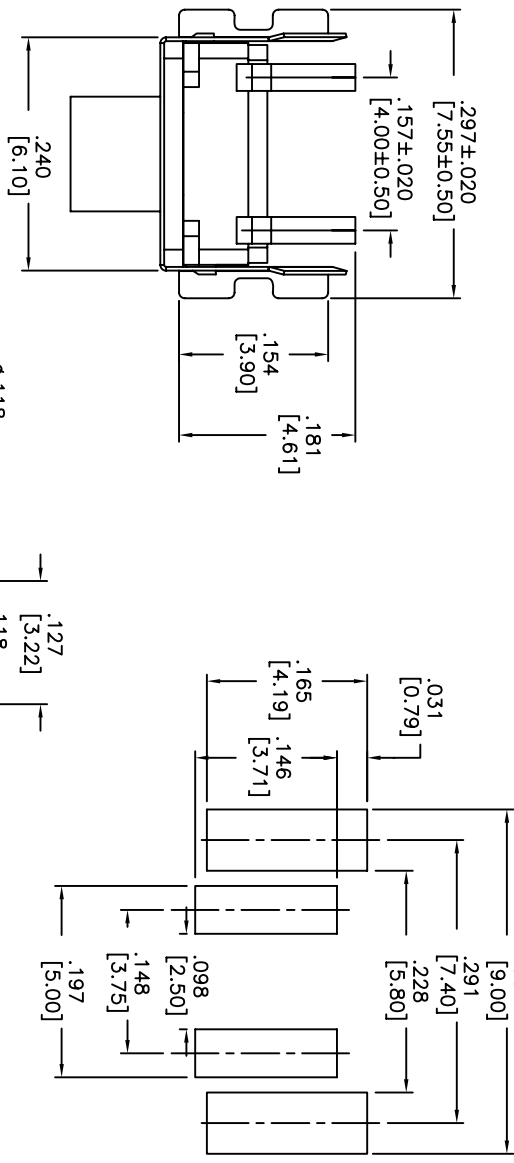


THIS DOCUMENT IS THE PROPERTY OF APDM COMPONENTS AND SHALL NOT BE COPIED, REPRODUCED, DISCLOSED OR USED AS THE BASIS FOR MANUFACTURING OR SALE WITHOUT PERMISSION OF A DULY AUTHORIZED REPRESENTATIVE OF APDM COMPONENTS INC.

P.C.B. LAYOUT
UNLESS OTHERWISE SPECIFIED
P.C. TOLERANCES ARE ±.004 [0.10]



PRODUCT SERIES: ATA**G***V*
 S=WITH SUPPORT TERMINAL
 □=WITHOUT SUPPORT TERMINAL
 DIM "L" STEM HEIGHT:
 00=0
 08=.031 [0.80]
 10=.039 [1.00]
 23=.093 [2.35]
 33=.130 [3.30]

PACKAGE STYLE:
 T/R=TAPE AND REEL
 □=BULK PACK
 V=LEAD FREE
 SOLDERING:
 OPERATION FORCE:
 N=BROWN, 180gf
 R=RED, 260gf

DATE	SYM	REVISION RECORD	DWN.	CK.
4/07	B	ECO# 658	CD	PD
12/07	C	ECO# 734	CD	PD

DESCRIPTION: RIGHT ANGLE MECHANICAL CONTACT SWITCH.

SPECIFICATIONS:
 STROKE: .018±.008 [0.45±0.2]
 OPERATION TEMPERATURE RANGE: -25°C TO +70°C
 STORAGE TEMPERATURE RANGE: -30°C TO +80°C
 VIBRATION TEST: PASSES METHOD 201A
 MIL-STD-202F:
 SHOCK TEST: 50G PER METHOD 213B MIL-STD202F.
 ELECTRICAL LIFE: 500,000 CYCLES.
 RATING: 50mA, 12VDC.
 CONTACT RESISTANCE: 100mΩ MAX.
 INSULATION RESISTANCE: 100MΩ MIN. 500VDC.
 DIELECTRIC STRENGTH: 250VAC/1 MINUTE.
 CONTACT ARRANGEMENT: 1 POLE 1 THROW.
 MATERIALS:
 COVER: NICKEL SILVER.
 STEM: SILICONE RUBBER.
 TERMINAL: BRASS WITH SILVER PLATING.
 BASE: UL94V-0 HIGH-TEMP. THERMOPLASTIC.
 COLOR: BLACK.
 CONTACT: PHOSPHOR BRONZE WITH SILVER CLADDING.
 SOLDERING:
 HAND: 30 WATT IRON AT 350° FOR 5 SECONDS.
 IR REFLOW & VAPOR PHASE: 255°C MAX.
 ROHS COMPLIANT.
 LEAD FREE PROCESS COMPATIBLE.

Q.A. INSPECT: DESIGNS: ORIGINAL TOLERANCES (UNLESS OTHERWISE SPECIFIED) .XX=±.02 [0.05] .XXX=±.0008 [0.02] .XXXX=±.0008 [0.02] ANGLE = 30.5°		APDM APPLIED COMPONENTS INC. 63 NANK. RD. HAVERTHILL, MA 01830 TEL: 978-375-5554 FAX: 978-375-5554	DPN: CJD BR: PJD THIRD ANGLE PROJECTION
TITLE RIGHT ANGLE TACT SWITCH	SHEET 1 OF 1 SIZE B SCALE 8:1	DATE: 8/8/05 DRAWING NO: ATAS)6***V*	REV: C

1 2 3 4 5 6 7 8

X-ON Electronics

Largest Supplier of Electrical and Electronic Components

Click to view similar products for [Tactile Switches](#) category:

Click to view products by [Apem](#) manufacturer:

Other Similar products are found below :

[5GTH92001](#) [5GTH9202242](#) [1-1977120-4](#) [ADTSA62RV](#) [ADTSA63KV](#) [ADTSA644NV](#) [ADTSMW66NV](#) [ADTSMW67RV](#) [B3F-3123](#) [B3F-6055A](#) [B3F-B32-01-KIT](#) [1977177-8](#) [1977266-1](#) [ADTS644KV](#) [ADTSA61RV](#) [ADTSA62KV](#) [ADTSA63NV](#) [ADTSA63RV](#) [ADTSM21NSVTR](#) [ADTSM32NVTR](#) [ADTSM63SVTR](#) [ADTSM644KVTR](#) [ADTSMW64RV](#) [ADTSMW69NV](#) [FSMRA4JHA04](#) [GS4.70F300QP](#) [3ESH9R](#) [506E00201](#) [MJTP1164TR](#) [3FTL600RAS](#) [3FTL640RAS](#) [Y96K132V0FPLFS](#) [101-TS5022T1601-EV](#) [5GSH92001](#) [KSJ0A231](#) [80SH LFG](#) [EVQ-P1D05K](#) [MJTP1162TR](#) [ADTSM63KV](#) [2-1977120-7](#) [TSJW-5.2-260-TR](#) [KMT011MNGJLHS](#) [ADTSA648RV](#) [70-201.0](#) [ADTSM62KSVTR](#) [ATA600VTR](#) [ADTSG66RV](#) [ADTS61NV](#) [ADTSM62KVTR](#) [ADTSM25KSVB](#) [ADTS65RV](#)