

# AV series

Security pushbutton switches suitable for 250 VAC • approved according to EN 61058-1



## DISTINCTIVE FEATURES

Mains switches approved to EN61058-1

Ø 16 (.629), 19 (.748) and 22 mm (.866)

Latching

Three terminal types



## ENVIRONMENTAL SPECIFICATIONS

- Optional front panel sealing : IP65 according to IEC 60529
- Operating temperature : -30 °C to +70 °C (-22 °F to +158 °F)



## ELECTRICAL SPECIFICATIONS

- Max. current/voltage rating with resistive load : 1 A 250 VAC
- Initial contact resistance : 50 mΩ max.
- Insulation resistance : 1,000 MΩ min. at 500 VDC
- Dielectric strength :  
2,000 Vrms 50 Hz min. between terminals  
500 Vrms 50 Hz between terminals and frame
- Electrical life : 10,000 cycles at 1 A 250 VAC



## GENERAL SPECIFICATIONS

- Torque : 1.5 Nm min. - 4 Nm max. applied to nut
- Panel thickness :  
Ø 16 : 1 (.039) to 6 mm (.236) max.  
Ø 19 and Ø 22 : 1 (.039) to 9 mm (.354) max.
- Low level or mechanical life : 200,000 cycles
- Hand soldering : 300 °C (572 °F), 4 sec. max.



## MATERIALS

- Case : PA4-6, UL94-V0
- Contacts : silver (A)
- Bushing & actuator : see following pages

APEM products may be recycled at end-of-life for the re-claiming of valuable metal components.

The company reserves the right to change specifications without notice.



# AV series

Security pushbutton switches suitable  
for 250 VAC • approved according to EN 61058-1

## AGENCY APPROVAL



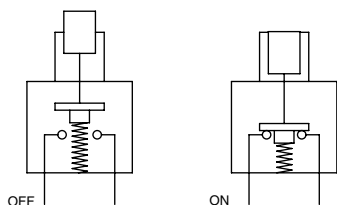
EN61058-1 1A 250 VAC  
All models



marked



## ELECTRICAL FUNCTIONS



## PANEL MOUNTING

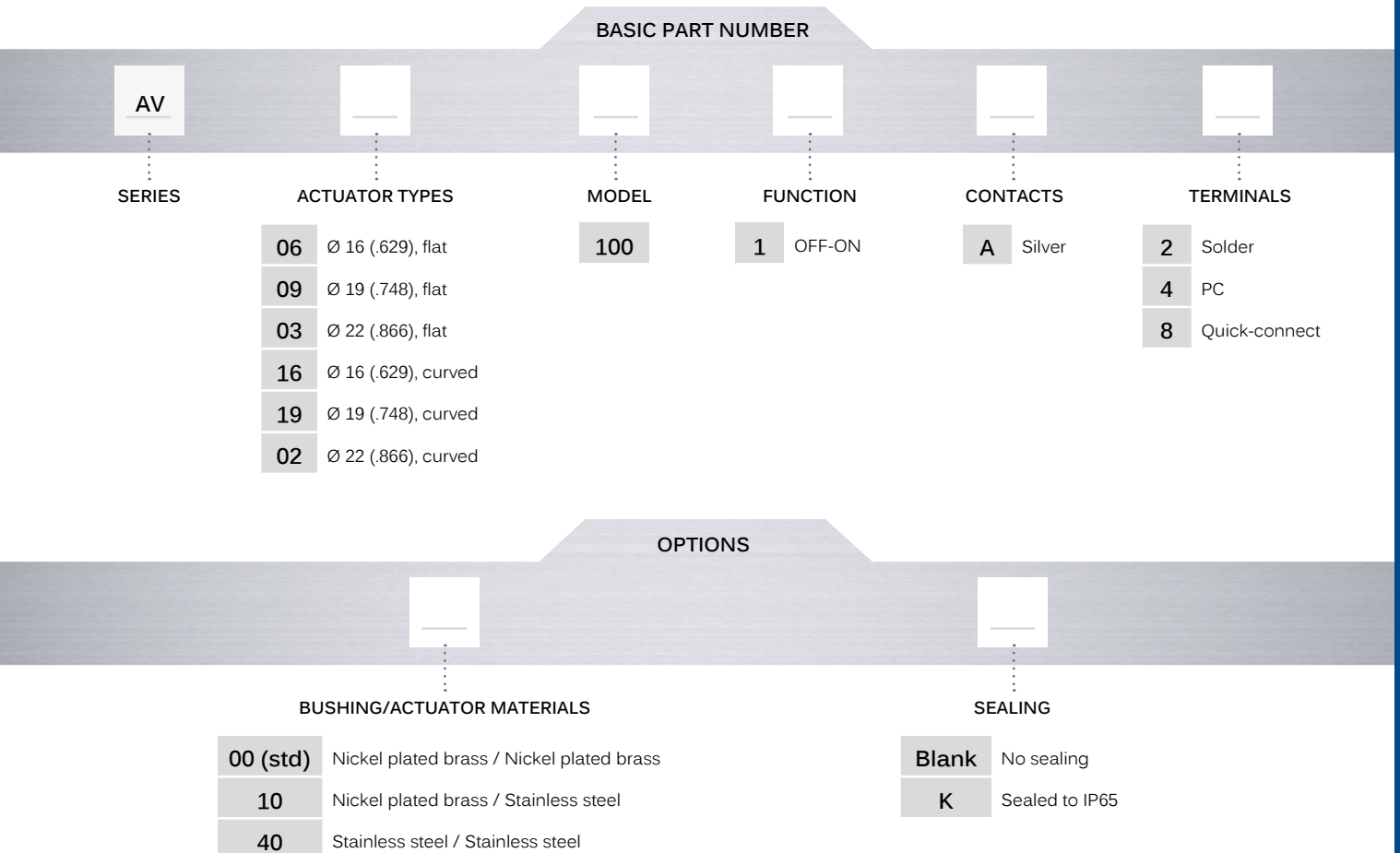
- Panel cut-out :  
Ø 16.2 mm (.755)  
Ø 19.2 mm (.755)  
or Ø 22.2 mm (.874)

# AV series

Security pushbutton switches suitable for 250 VAC • approved according to EN 61058-1



## BUILD YOUR PART NUMBER



## ABOUT THIS SERIES

On the following pages, you will find successively basic part numbers of switches and options in the same order as in above chart.

**Notice:** please note that not all combinations of above numbers are available. Refer to the following pages for further information.

**Mounting accessories:** standard hardware supplied : 1 hex nut. Standard and special hardware is presented in the "Hardware" section of website.

# AV series

Security pushbutton switches suitable for 250 VAC • approved according to EN 61058-1

## Ø 16 (.629) - FLAT OR CURVED ACTUATOR SOLDER LUG TERMINALS



|                   |     |    |  |
|-------------------|-----|----|--|
| Flat actuator     |     |    |  |
| <b>AV061001A2</b> | OFF | ON |  |
| Curved actuator   |     |    |  |
| <b>AV161001A2</b> | OFF | ON |  |

Product shown in OFF position.

## Ø 19 (.748) - FLAT OR CURVED ACTUATOR SOLDER LUG TERMINALS



|                   |     |    |  |
|-------------------|-----|----|--|
| Flat actuator     |     |    |  |
| <b>AV091001A2</b> | OFF | ON |  |
| Curved actuator   |     |    |  |
| <b>AV191001A2</b> | OFF | ON |  |

Product shown in OFF position.

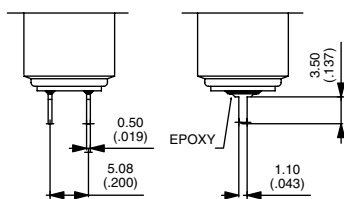
## Ø 22 (.866) - FLAT OR CURVED ACTUATOR SOLDER LUG TERMINALS



|                   |     |    |  |
|-------------------|-----|----|--|
| Flat actuator     |     |    |  |
| <b>AV031001A2</b> | OFF | ON |  |
| Curved actuator   |     |    |  |
| <b>AV021001A2</b> | OFF | ON |  |

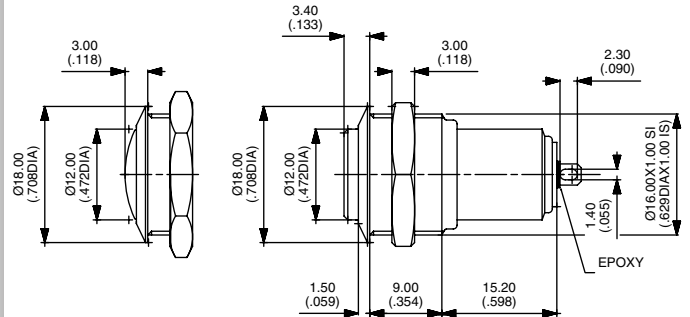
Product shown in OFF position.

## STRAIGHT PC TERMINALS

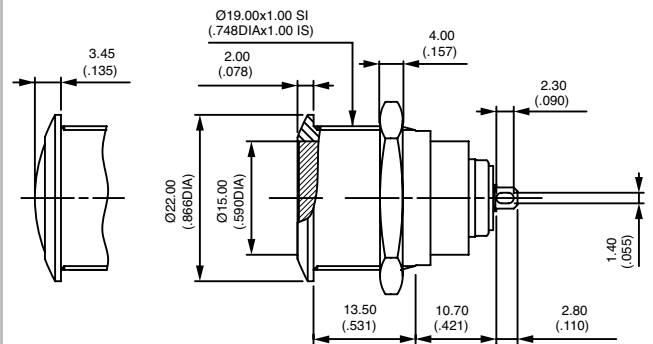


Replace 2 with 4 at the end of the model numbers shown above.

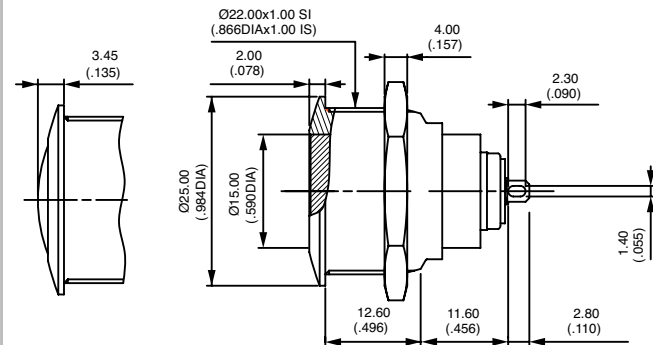
Hex nut 19 (.748) across flats



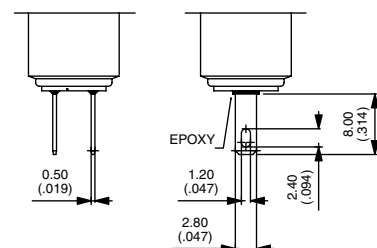
Hex nut 22 (.866) across flats



Hex nut 25 (.984) across flats



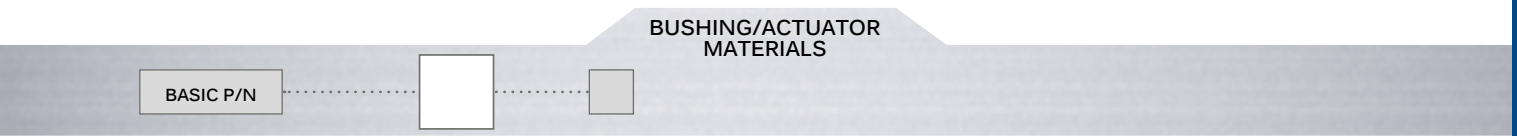
## QUICK-CONNECT TERMINALS



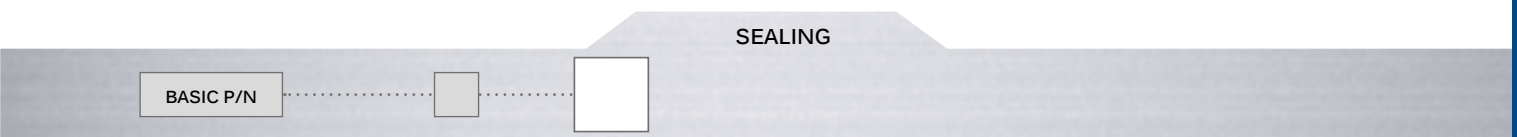
Replace 2 with 8 at the end of the model numbers shown above.

# AV series

Security pushbutton switches suitable for 250 VAC • approved according to EN 61058-1

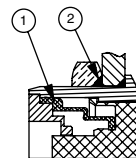


| CODE     | BUSHING             | ACTUATOR            |
|----------|---------------------|---------------------|
| 00 (std) | Nickel plated brass | Nickel plated brass |
| 10       | Nickel plated brass | Stainless steel     |
| 40       | Stainless steel     | Stainless steel     |



Blank No sealing  
K Front panel sealing to IP65

OPTION K



- ① - elastomeric membrane
- ② - external gasket

## X-ON Electronics

Largest Supplier of Electrical and Electronic Components

*Click to view similar products for [Pushbutton Switches](#) category:*

*Click to view products by [Apem](#) manufacturer:*

Other Similar products are found below :

[8940K2012](#) [LW1L-M1C10V-A](#) [LW1L-M1C70-A](#) [LW2L-A1C20M-GD](#) [LW2L-M1C20M-A](#) [60324L](#) [M22-D-R-GB0/K11](#) [M7E-HRN2](#)  
[67021K512](#) [67081K512X](#) [701PB580](#) [7199K101](#) [810K12910](#) [810KSV30B](#) [MML21EA2ADK](#) [MML21KA3ABK](#) [MML23KA3AC05K-001](#)  
[MML23KW3AA01W](#) [8418K2](#) [8442K2](#) [8442K3](#) [8450K1](#) [860K11911T01A](#) [861901](#) [861K11911T01A07](#) [861K13810T00A14](#) [861K13911](#)  
[8646AB6X718UL](#) [8646ABUL](#) [9001KXRK](#) [907AYY100](#) [PMHD155A1](#) [9533CD4+U574+U4922](#) [95-414.000](#) [99-450.837](#) [99-453.837](#)  
[PV3H2B0NN-341](#) [1203MRA](#) [A22NZBGANGA](#) [A22NZBMMNGA](#) [A22NZBNANGA](#) [A22NZMPATRA](#) [A2PMA1X03EC56](#) [A3A-5123-02](#)  
[A3A-7140](#) [A3A-7310](#) [A3A-7340](#) [A3U-TMW-A2C-5M](#) [A595](#) [12037A2ULCSA](#)