

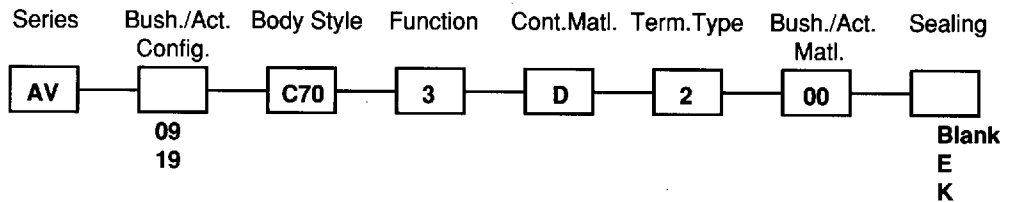
New!

AV SERIES TACTILE PUSHBUTTON SWITCHES

SPECIFICATIONS SUBJECT TO CHANGE WITHOUT NOTICE.

SPECIFICATIONS	FEATURES
<p>Contact ratings: Max.resistive load: 50mA at 24 VDC Initial contact resistance: 100 milliohms max. Insulation resistance: 1000 megohms min. at 500 VDC Dielectric strength: 500 V rms min. between terms. 2000 V rms between terms & bushing Electrical life: 1,000,000 cycles at full load Operating force: 25 oz. ± 7 oz. Travel: .027" (0.7mm) ± .003" (0.1mm) Panel thickness: .039" (1mm) to .433" (11mm) Operating temperature range: -30°C to +70°C Solder heat resistance: 270 °C max. for 3 seconds</p>	<ul style="list-style-type: none"> ● .755" (19 mm) dia. models. ● Single pole NO momentary action. ● Standard models provide protection per IP54. ● Optional sealing options provide protection to IP65. ● Extremely rugged and durable.
	MATERIALS
	<p>Contacts: Gold plated dome Terminals: Gold plated brass Bushing & Actuator: Nickel plated brass (std'd) Case: PBT Hex. Mounting Nut: Nickel plated brass</p>

ORDER FORMAT: For complete model no., fill in empty boxes with selected options shown below.
 Example of complete model no. -
AV19C703D200

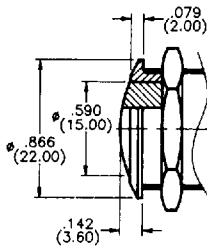


Other Bushing/Actuator materials available - consult factory.

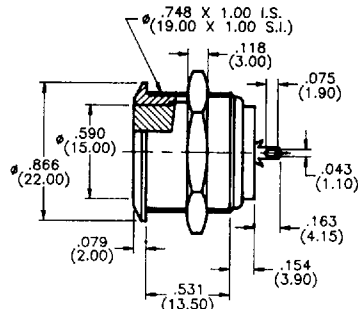
19mm

Bushing/Actuator configurations

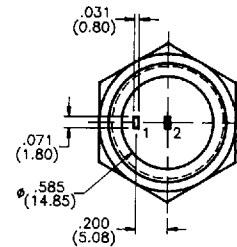
Solder lug terminals



19 curved Act. & Bush.



09 flat Act. & curved Bush.

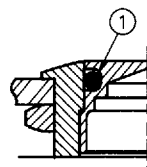
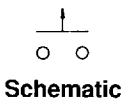


Rear view all models

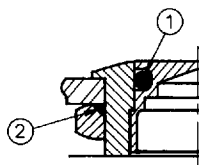
Blank - no sealing (std'd)



AV09C703D200
(Model shown)



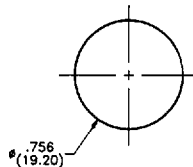
E - (1) Internal seal meets IP65



K - (1) Internal seal & (2) front panel seals meet IP65

Sealing

Min. dimensions for matrix mounting: 1.181" (30mm) x 1.181" (30mm).



Mounting Hole

X-ON Electronics

Largest Supplier of Electrical and Electronic Components

Click to view similar products for [Pushbutton Switches](#) category:

Click to view products by [Apem](#) manufacturer:

Other Similar products are found below :

[8940K2012](#) [LW1L-M1C10V-A](#) [LW1L-M1C70-A](#) [LW2L-A1C20M-GD](#) [LW2L-M1C20M-A](#) [60324L](#) [M22-D-R-GB0/K11](#) [M7E-HRN2](#)
[67021K512](#) [67081K512X](#) [701PB580](#) [7190K101](#) [7199K101](#) [810K12910](#) [810KSV30B](#) [MML21EA2ADK](#) [MML21KA3ABK](#)
[MML23KA3AC05K-001](#) [MML23KW3AA01W](#) [8418K2](#) [8442K3](#) [8450K1](#) [860K11911T01A](#) [861901](#) [861K11911T01A07](#)
[861K13810T00A14](#) [861K13911](#) [8646AB6X718UL](#) [8646ABUL](#) [9001KXRK](#) [907AYY100](#) [PMHD155A1](#) [95-313.000](#)
[9533CD4+U574+U4922](#) [95-414.000](#) [99-450.837](#) [99-453.837](#) [PV3H2B0NN-341](#) [1203MRA](#) [A22NZBGANGA](#) [A22NZBMMNGA](#)
[A22NZBNANGA](#) [A22NZMPATRA](#) [A2PMA1X03EC56](#) [A3A-5123-02](#) [A3A-7140](#) [A3A-7310](#) [A3A-7340](#) [A3U-TMW-A2C-5M](#) [A595](#)