

# IB series

Snap-in sealed pushbutton switches •  
bushing Ø 12 mm • momentary



## DISTINCTIVE FEATURES

- Snap-in models
- Compact, lightweight
- Tactile feedback
- Sealed to IP54



## ENVIRONMENTAL SPECIFICATIONS

- Front panel sealing according to IEC 60529 : IP54
- Shock resistance : 100 g according to IEC 512-4, test 6c
- Vibration resistance : 10-500 Hz - 10 g according to IEC 512-4, test 6d
- Salt spray : IEC 512-6, test 11f
- Operating temperature : -40 °C to +85 °C (-40 °F to +185 °F)



## ELECTRICAL SPECIFICATIONS

- Max. current/voltage rating with resistive load :  
400 mA 32 VAC - 100 mA 48 VDC
- Initial contact resistance : 50 mΩ max.
- Insulation resistance : 1 GΩ min. at 500 VDC
- Dielectric strength : 1,000 Vrms
- Electrical life at full load : 500,000 cycles



## GENERAL SPECIFICATIONS

- Panel thickness : 0.8 mm (.031) min. - 1.8 mm (.071) max.
- Total travel : 1.7 mm (.066) ± 0.3 mm
- Typical operating force : 4 N ± 3 N
- Low level or mechanical life : 1,000,000 cycles
- Soldering : 300 °C (572 °F) max. for 3 seconds

The company reserves the right to change specifications without notice.



# IB series

Snap-in sealed pushbutton switches •  
bushing Ø 12 mm • momentary



## MATERIALS

- Case : thermoplastic UL94-V0
- Actuator : polyamide 6/6
- Bushing/bezel : polyamide 6/6
- Contacts : silver, gold plated
- Terminal seal : epoxy

APEM products may be recycled at end-of-life for the re-claiming of valuable metal components.

## AGENCY APPROVAL



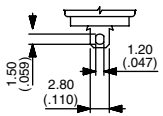
2 A 125 VAC/250 VAC  
File E83438

**Availability** : consult factory for details of approved models.

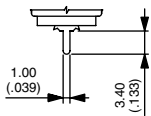
**Marking** : to order switches marked UL, complete appropriate box of ordering format.



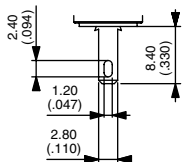
## TERMINALS



Solder lug S



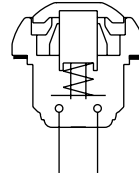
Straight P



Quick-connect Z



## ELECTRICAL FUNCTIONS

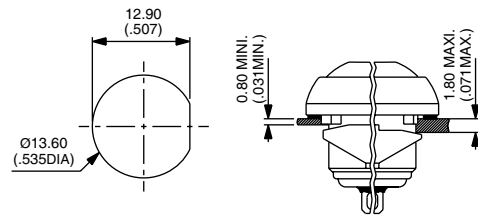


Function 3 (NO)

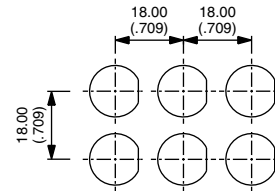


## MOUNTING STANDARD BEZEL

### PANEL CUT-OUT

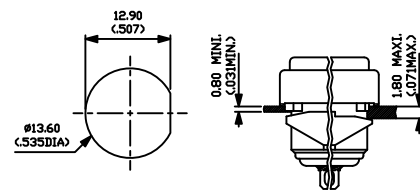


### MATRIX MOUNTING

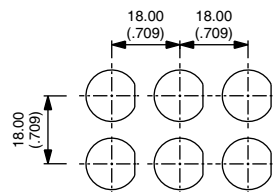


## MOUNTING REDUCED MODEL

### PANEL CUT-OUT



### MATRIX MOUNTING

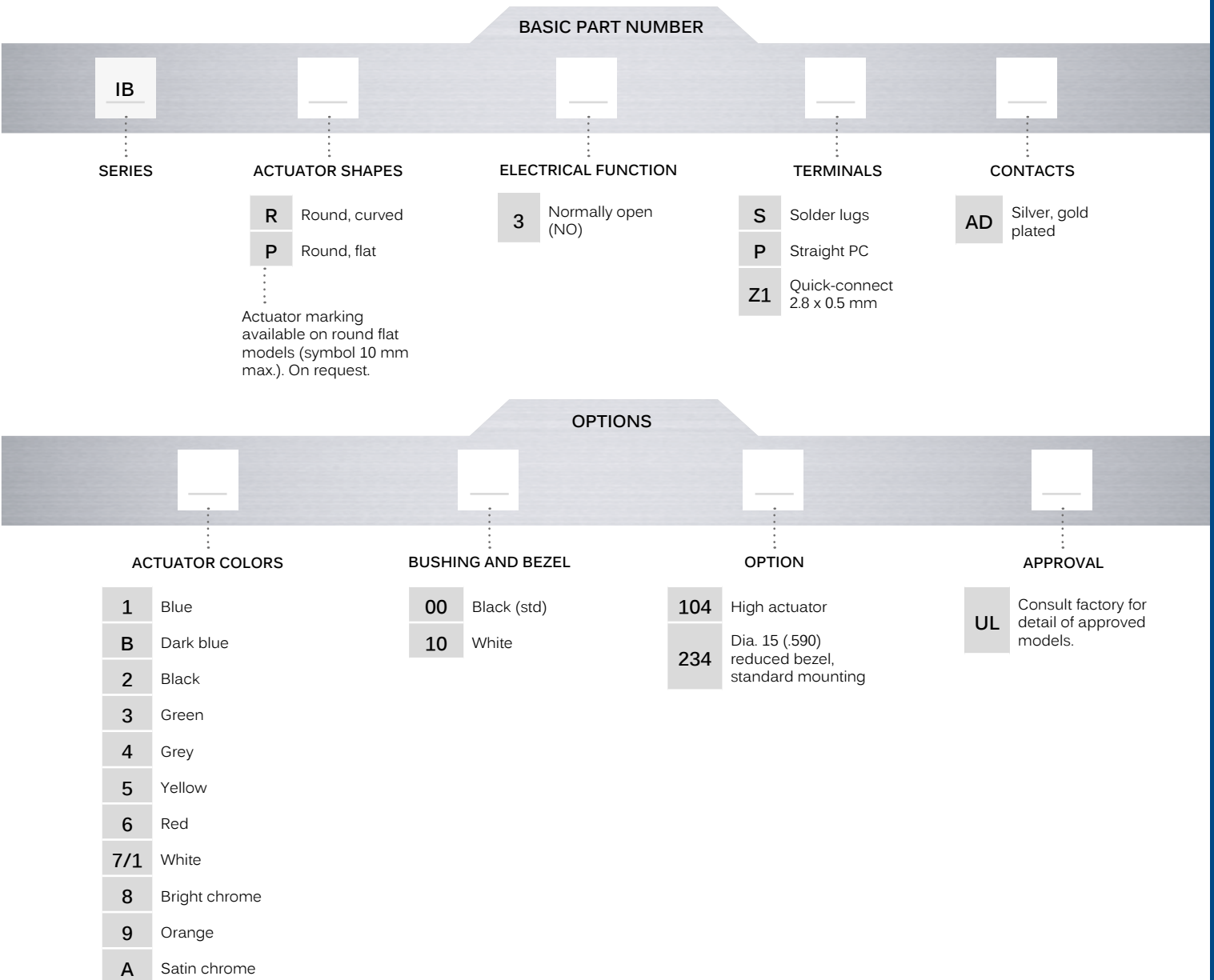


# IB series

Snap-in sealed pushbutton switches •  
bushing Ø 12 mm • momentary



## BUILD YOUR PART NUMBER



## ABOUT THIS SERIES

On the following pages, you will find successively basic part numbers of switches and options in the same order as in above chart.

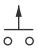
- Notice** : please note that not all combinations of above numbers are available. Refer to the following pages for further information.
- A sealing boot** is available to protect the switches against frost and sand (P/N U5125). See "Sealing Boots" section of website.
- Mounting accessories** : Standard hardware supplied : 1 flat seal. Plastic nut 17 mm (.669) across flats, thickness 4 mm (.157) available on request. Part number U4248.


# IB series

Snap-in sealed pushbutton switches •  
bushing Ø 12 mm • momentary

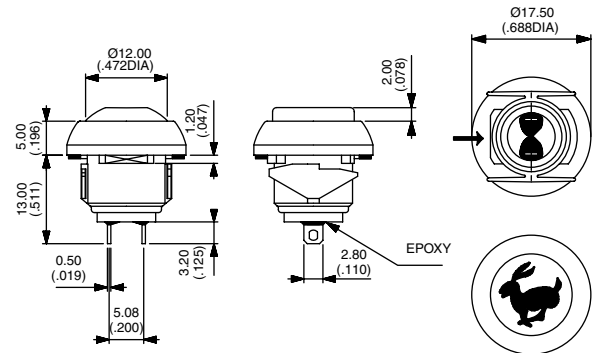
## SOLDER LUG TERMINALS



Curved actuator  
**IBR3SAD**  Normally Open

Flat actuator  
**IBP3SAD**  Normally Open

→ FLAT



Also available with straight PC : **IB•3PAD** or quick-connect terminals : **IB•3Z1AD**

### ACTUATOR COLORS

BASIC P/N



- 1 Blue
- B Dark blue
- 2 Black
- 3 Green
- 4 Grey
- 5 Yellow
- 6 Red
- 7/1 White
- 8 Bright chrome
- 9 Orange
- A Satin chrome

### BUSHING AND BEZEL

BASIC P/N



- 00 Black (standard)
- 10 White

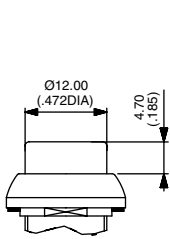
# IB series

Snap-in sealed pushbutton switches •  
bushing  $\varnothing$  12 mm • momentary

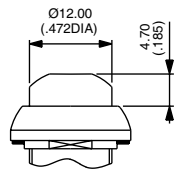
## OPTIONS



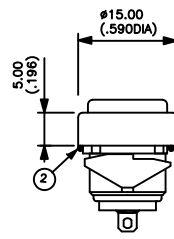
- 104 High actuator
- 234 Dia. 15 (.590) reduced bezel, standard mounting



104 IBR



104 IBP



234

## AGENCY APPROVAL



- UL**  
**Availability** : consult factory for details of approved models.  
**Marking** : to order switches marked UL, complete appropriate box of ordering format.

## X-ON Electronics

Largest Supplier of Electrical and Electronic Components

*Click to view similar products for [Switch Fixings](#) category:*

*Click to view products by [Apem](#) manufacturer:*

Other Similar products are found below :

[893102000](#) [00-5150](#) [LZZ1A](#) [0098.9234](#) [M2PA-5011](#) [630155](#) [635401](#) [6PA113](#) [6PA147-E6](#) [6PA148-E6](#) [6PA32](#) [6PA9](#) [700106](#) [700109](#)  
[700303A56](#) [700C1GRY](#) [700C2GRN](#) [704-6001](#) [704.960.9](#) [704.965.2](#) [704.965.6](#) [704.966.0](#) [7089-3](#) [710082-B11](#) [71M1048](#) [757200264](#)  
[764300000](#) [MHU35](#) [MHU37](#) [807039-1](#) [825.003.011](#) [825.005.011](#) [825.053.011](#) [825.055.011](#) [826.000.071](#) [827.020.011](#) [827.400.021](#)  
[835.900.023](#) [MML52C10C](#) [MML52E10C](#) [MML92HGH](#) [MML93K](#) [84211M02CNNS](#) [84212M02CNNS](#) [842.500.011](#) [843.000.011](#) [843187-000](#) [843487-000](#) [84-901](#) [84-902](#)