

IT 40 series

Mains pushbutton switches - 6000V dielectric strength

Distinctive features and specifications



- Mains pushbutton switches for PC boards
- Highest dielectric 6 KV
- Latchdown mechanism

ELECTRICAL SPECIFICATIONS

- Max. current/voltage rating with resistive load : see table below
- Insulation resistance : 10.000 M Ω min. at 500VDC
- Dielectric strength : 6.000 Vrms 50 Hz min.
(other components to be kept outside protection area A to preserve 6KV on PCB - see drawing on next page)
- Electrical life at full load : 20.000 cycles

CURRENT/VOLTAGE RATINGS

Certified ratings	Inrush current
IEC 65 NFC 92130 (L.C.I.E. certificate)	according to UL1054
1,5/56A 250VAC 20.000 cycles	TV3 250VAC 25.000 cycles

MATERIALS

- Case and cover : polyester
UL VO
- Plunger : polyamide 6-6
- Contacts : silver/nickel alloy
(Ag/Ni)
- Other molded parts in
UL approved materials

GENERAL SPECIFICATIONS

- Low level or mechanical life : 50.000 cycles min.
- Operating temperature : -10°C to +85°C
- Storage temperature : -30°C to +85°C
- Total travel : 8 mm (.314)

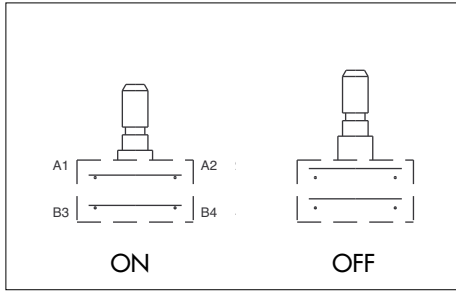
Dimensions : first dimensions are in mm while inches are shown as bracketted numbers.



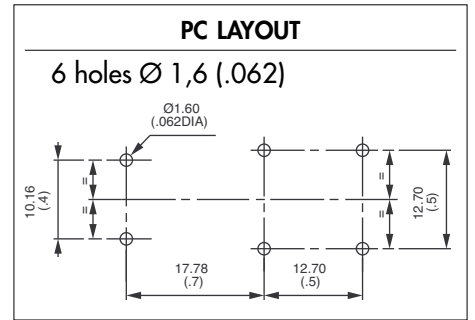
Packaging unit : 40 pieces

IT 40 series

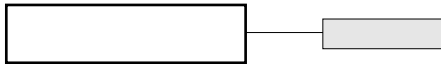
Mains pushbutton switches - 6000V dielectric strength



- Double pole configurations



MODEL
STRUCTURE

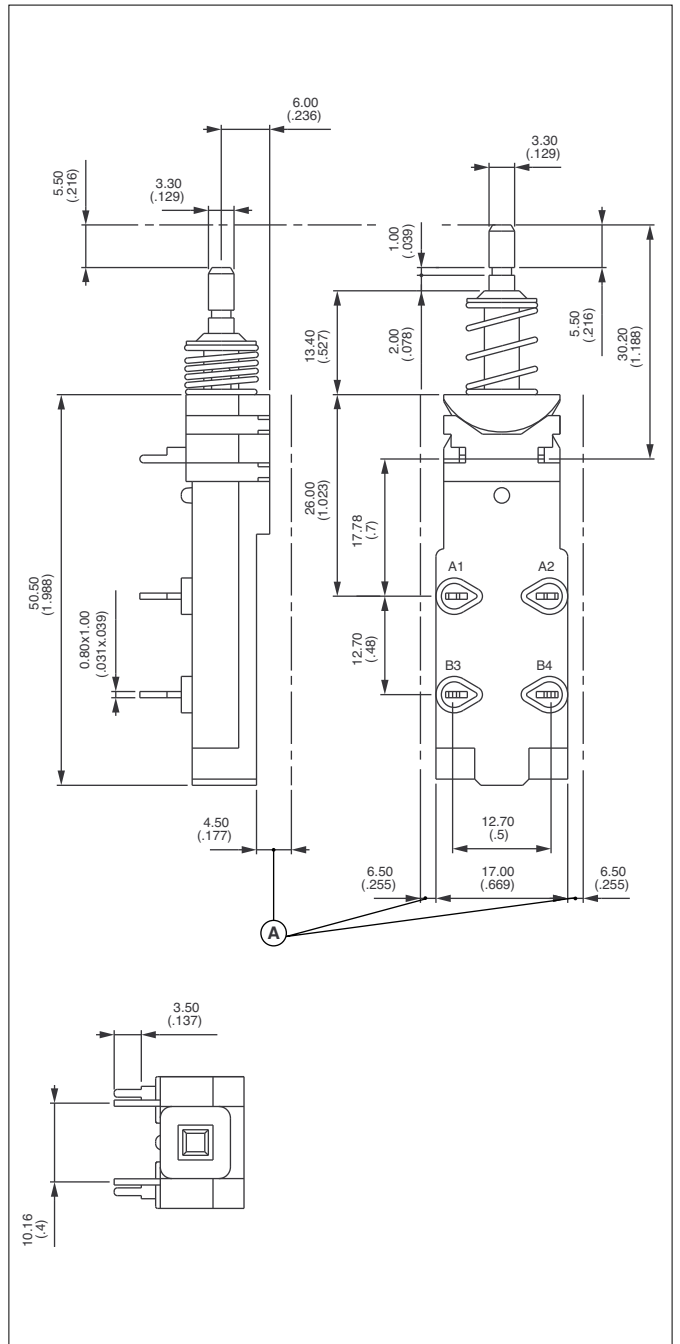
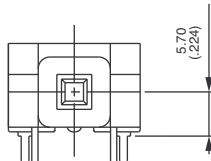


Distance from plunger center to PCB : 5,7 (.224)



IT4100100

ON - OFF

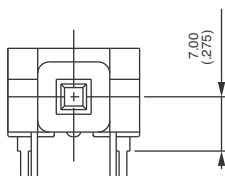


Distance from plunger center to PCB : 7 (.275)



IT4100200

ON - OFF

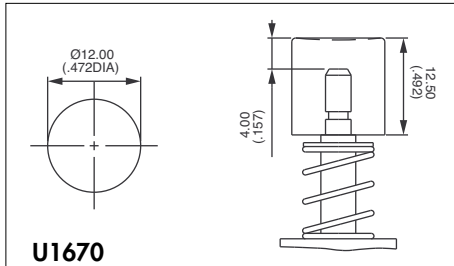




IT 40 series

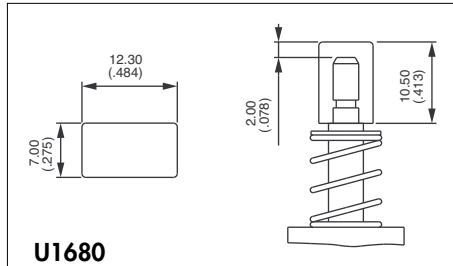
Mains pushbutton switches - 6000V dielectric strength

CAPS



U1670

Round cap



U1680

Rectangular cap

Cap colours

Replace "0" by number

- 1 blue
- 1/4 dark blue
- 2 black
- 3 green
- 4 grey
- 5 yellow
- 6 red
- 7/1 white
- 9 orange

X-ON Electronics

Largest Supplier of Electrical and Electronic Components

Click to view similar products for [Pushbutton Switches](#) category:

Click to view products by [Apem](#) manufacturer:

Other Similar products are found below :

[8940K2012](#) [LW1L-M1C10V-A](#) [LW1L-M1C70-A](#) [LW2L-A1C20M-GD](#) [LW2L-M1C20M-A](#) [60324L](#) [M22-D-R-GB0/K11](#) [M7E-HRN2](#)
[67021K512](#) [67081K512X](#) [701PB580](#) [7190K101](#) [7199K101](#) [810K12910](#) [810KSV30B](#) [MML21EA2ADK](#) [MML21KA3ABK](#)
[MML23KA3AC05K-001](#) [MML23KW3AA01W](#) [8418K2](#) [8442K3](#) [8450K1](#) [860K11911T01A](#) [861901](#) [861K11911T01A07](#)
[861K13810T00A14](#) [861K13911](#) [8646AB6X718UL](#) [8646ABUL](#) [9001KXRK](#) [907AYY100](#) [PMHD155A1](#) [95-313.000](#)
[9533CD4+U574+U4922](#) [95-414.000](#) [99-450.837](#) [99-453.837](#) [PV3H2B0NN-341](#) [1203MRA](#) [A22NZBGANGA](#) [A22NZBMMNGA](#)
[A22NZBNANGA](#) [A22NZMPATRA](#) [A2PMA1X03EC56](#) [A3A-5123-02](#) [A3A-7140](#) [A3A-7310](#) [A3A-7340](#) [A3U-TMW-A2C-5M](#) [A595](#)