

MA SERIES - MICRO-LIMIT SWITCHES



FEATURES

- **Ratings: 16 Amps 250 VAC (resistive load). 4 Amps 250 VAC (motor load) or 3 Amps 250 VAC (resistive load). 0.1 Amps 250 VAC (motor load).**
- **Single pole CO (change-over or alternate action), NC (normally closed momentary) and NO (normally open momentary) configurations.**
- **Close tolerance switching action with long life (10,000,000 mechanical cycles min.).**
- **Pin plunger, hinge lever or roller lever actuator options.**

MATERIALS

| | |
|--------------------------|---|
| Contacts: | Stationary: Nicker silver Shorting: Beryllium copper |
| Actuator: | FS 161 (UL94V-O) |
| Case & cover: | PBT (UL94V-O) |
| Terminals: | Silver plated copper/zinc |

AGENCY RECOGNITION



Approval pending.

SPECIFICATIONS

| | |
|------------------------|---|
| Operating force: | ≤ 12.59 oz. (343 grams) approx. for 16 Amp models ≤ 0.72 oz. (20 grams) approx. for 3 Amp models |
| Pretravel: | $\leq .047$ " (1.2mm) |
| Overtravel: | $\geq .059$ " (1.5mm) min. |
| Movement differential: | $\leq .016$ " (0.4mm) |
| Free position: | $\leq .649$ " (16.5mm) |
| Operating position: | $.578 \pm .020$ " (14.7mm \pm 0.5mm) |
| Operating temperature: | -40°C to +85°C |
| Contact gap: | less than .118" (3mm) |
| Tracking resistance: | > PTI 175 |

MA SERIES - MICRO-LIMIT SWITCHES

ORDER FORMAT

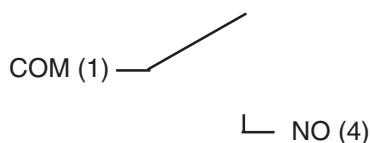
M A A 6 B

| Series | Circuit & quick-connect terminals | Switch rating | Actuator style |
|-----------|---|---|--|
| MA | A Normally open (standard) .031 x .248" (0.8x6.3mm) B Normally closed (standard) .031 x .248" (0.8x6.3mm) C Change-over (standard) .031 x .248" (0.8x6.3mm) D Normally open, .031 x .248" (0.8x6.3mm), spacing .197" (5mm) E Normally closed, .031 x .248" (0.8x6.3mm), spacing .197" (5mm) F Change-over, .031 x .248" (0.8x6.3mm), spacing .197" (5mm) G Normally open, .020 x .189" (0.5x4.8mm) H Normally closed, .020 x .189" (0.5x4.8mm) I Change-over, .020 x .189" (0.5x4.8mm) J Normally open, .031 x .189" (0.8x4.8mm) K Normally closed, .031 x .189" (0.8x4.8mm) L Change-over, .031 x .189" (0.8x4.8mm) | 6 16(4)A 250 VAC 7 3(0.1)A 250 VAC | A Pin actuator B Hinge actuator C Roller actuator |

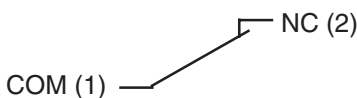
STANDARD MODELS

| Quick-connect terminal | | .031x.248" (0.8x6.3mm) | | .031x.248" (0.8x6.3mm) pin spacing - .197"(5mm) | | .020x.189" (0.5x4.8mm) | | .031x.189" (0.8x4.8mm) | |
|------------------------|----|---------------------------|--------------|--|--------------|---------------------------|--------------|---------------------------|--|
| Switching capacity | | 16(4)A | 3(0.1)A | 16(4)A | 16(4)A | 3(0.1)A | 16(4)A | 3(0.1)A | |
| Pin plunger | NO | MAA6A | MAA7A | MAD6A | MAG6A | MAG7A | MAJ6A | MAJ7A | |
| | NC | MAB6A | MAB7A | MAE6A | MAH6A | MAH7A | MAK6A | MAK7A | |
| | CO | MAC6A | MAC7A | MAF6A | MAI6A | MAI7A | MAL6A | MAL7A | |
| Hinge lever | NO | MAA6B | - | MAD6B | MAG6B | - | MAJ6B | - | |
| | NC | MAB6B | - | MAE6B | MAH6B | - | MAK6B | - | |
| | CO | MAC6B | - | MAF6B | MAI6B | - | MAL6B | - | |
| Roller lever | NO | MAA6C | - | MAD6C | MAG6C | - | MAJ6C | - | |
| | NC | MAB6C | - | MAE6C | MAH6C | - | MAK6C | - | |
| | CO | MAC6C | - | MAF6C | MAI6C | - | MAL6C | - | |

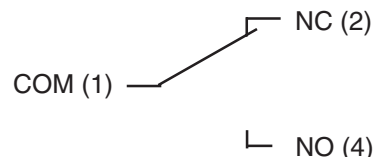
NO =
NORMALLY OPEN:



NC =
NORMALLY CLOSED:



CO =
CHANGE-OVER:



SPECIFICATIONS SUBJECT TO CHANGE WITHOUT NOTICE

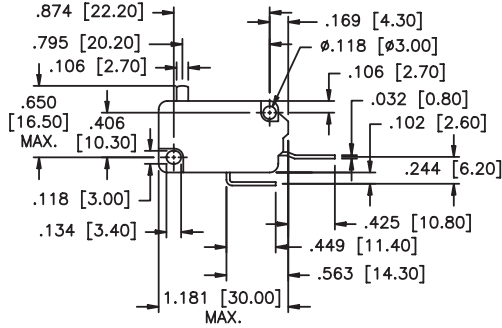
H

MA SERIES - MICRO-LIMIT SWITCHES

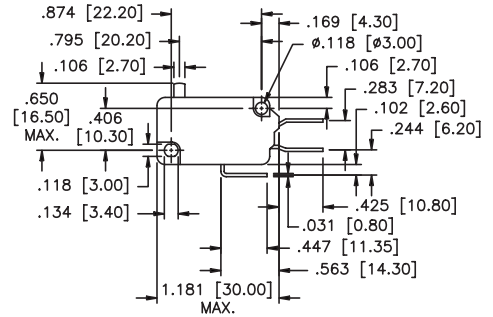
MECHANICAL OUTLINES

Models with quick-connect terminal .031x.248" (0.8x6.3mm)

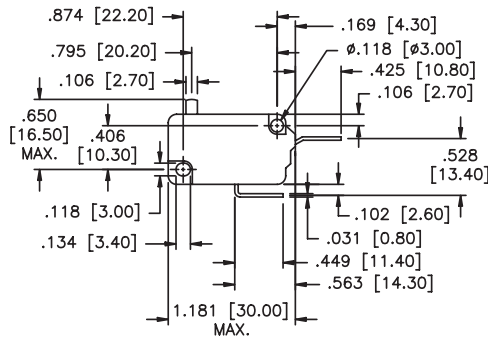
SPECIFICATIONS SUBJECT TO CHANGE WITHOUT NOTICE



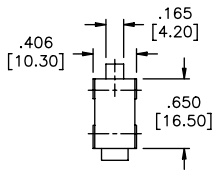
Normally open



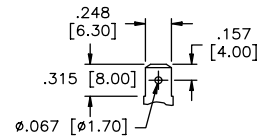
Change-over



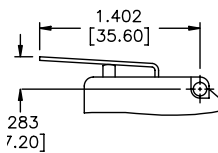
Normally closed



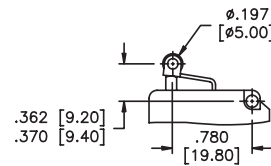
Side view



Quick-connect terminal



Hinge lever



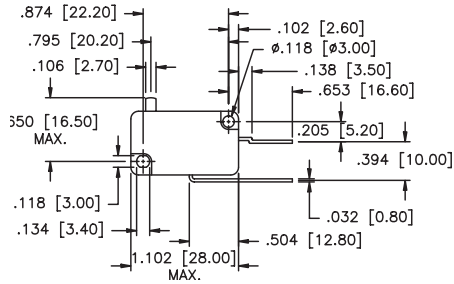
Roller lever

H

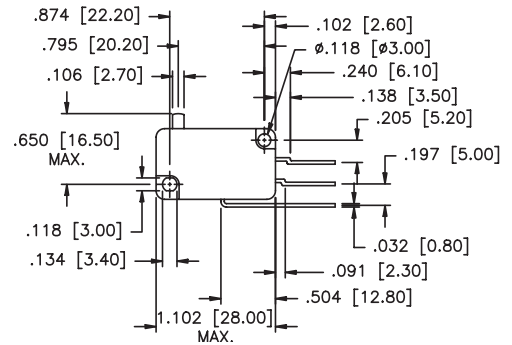
MA SERIES - MICRO-LIMIT SWITCHES

MECHANICAL OUTLINES

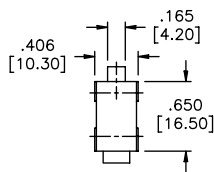
Models with quick-connect terminal .031x.248" (0.8x6.3mm) & pin spacing .197" (5mm)



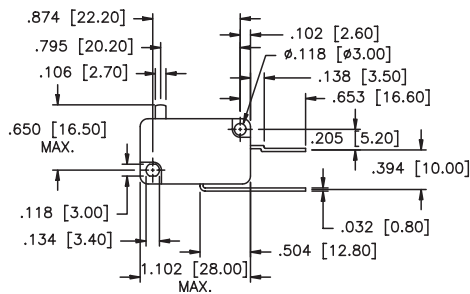
Normally open



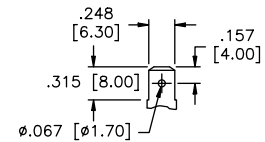
Change-over



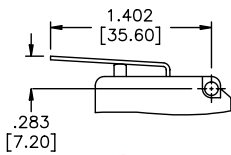
Side view



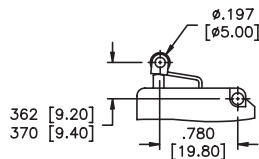
Normally closed



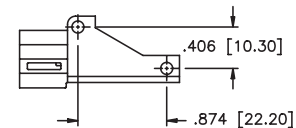
Quick-connect terminal



Hinge lever



Roller lever



Adaptor element

SPECIFICATIONS SUBJECT TO CHANGE WITHOUT NOTICE

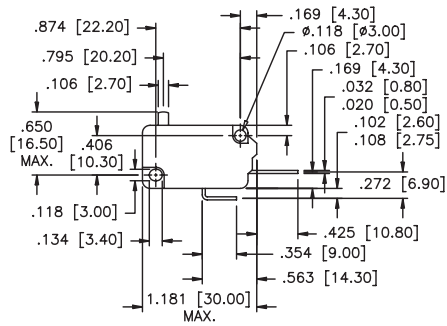
H

MA SERIES - MICRO-LIMIT SWITCHES

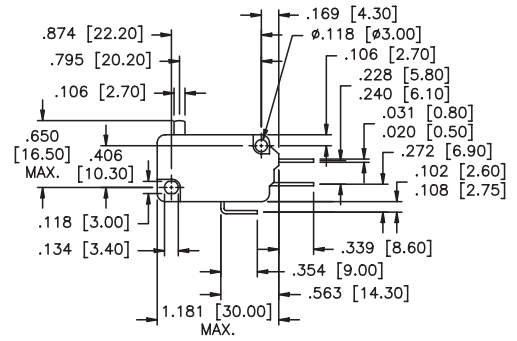
MECHANICAL OUTLINES

Models with quick-connect terminal .020 or .031x.248" (0.8 or 0.8x6.3mm)

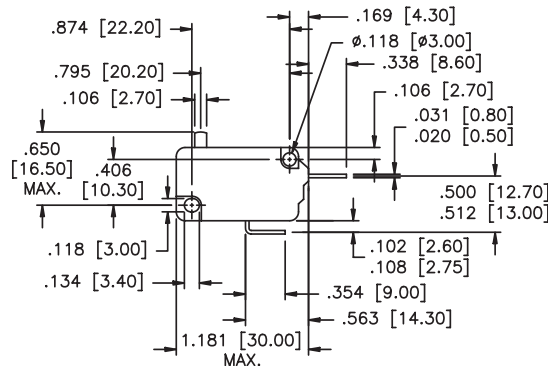
SPECIFICATIONS SUBJECT TO CHANGE WITHOUT NOTICE



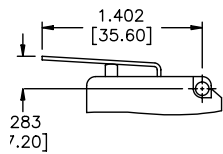
Normally open



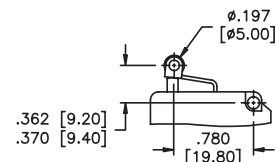
Change-over



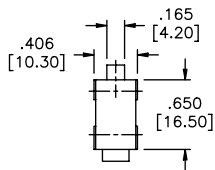
Normally closed



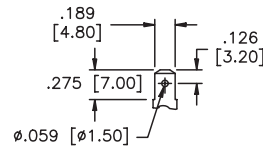
Hinge lever



Roller lever



Side view



Quick connect terminal

H

X-ON Electronics

Largest Supplier of Electrical and Electronic Components

Click to view similar products for [Basic / Snap Action Switches](#) category:

Click to view products by [Apem](#) manufacturer:

Other Similar products are found below :

[5SM901-S12](#) [5SM9-S12N195](#) [602EN532](#) [602EN535-RB](#) [602HE5-RB1](#) [604HE162](#) [604HE223-6B](#) [624HE17-RB](#) [6HM82](#) [6HM89](#) [6SE1](#)
[6SX1-H58](#) [70500216](#) [70599106](#) [MBD5B1](#) [MBH2731](#) [73-316-0012](#) [EXD-AR20](#) [79211923](#) [79218589](#) [7AS12](#)
[MIL30126AB6BBMD4A12XAU](#) [ML-1155](#) [ML-1376](#) [831010C3.0](#) [831090C2.EL](#) [83131904](#) [84212012](#) [8AS239](#) [8HM73-3](#) [8SX26-H33](#)
[914CE1-6G](#) [PL-100](#) [11SM1077-H4](#) [11SM1077-H58](#) [11SM1-TN107](#) [11SM405](#) [11SM8423-H2](#) [11SX37-T](#) [11SX48-H58](#) [11SM2442-T](#)
[11SM76-T](#) [11SM77-H58](#) [11SM77-T](#) [11SM863-T](#) [11SM866](#) [A7CN-1M-1-LEFT](#) [A831700C7.0](#) [121EN187-R](#) [121EN188-R](#)