

MJTP SERIES - 12 MM SQUARE TACT SWITCHES

FEATURES

- SPST momentary action.
- Excellent tactile feed-back (Snap dome).
- Long operating life for high reliability.
- Molded-in terminals minimize wicking of flux or solder.
- Flush, round, keyed or square actuator.
- Thru-hole mounting.

MATERIALS

Case: PBT, color black.
 Actuator: P.O.M. thermoplastic, color black.
 Cover: Stainless steel.
 Terminals: Silver plated brass.
 Shorting Contact: Silver plated phosphor bronze.



MJTP1212

MJTP1212A

MJTP1212B

MJTP1212C

GENERAL SPECIFICATIONS

ELECTRICALS

Contact rating: 50 mA @ 12 VDC
 Insulation resistance: 100 megohms min. (500 VDC)
 Dielectric withstanding voltage: 250 VAC for 1 minute
 Contact resistance: 100 milliohms max.
 Electrical Life: 100,000 cycles min. (1,000,000 cycles available - consult factory)
 Contact bounce: less than 5 msec.

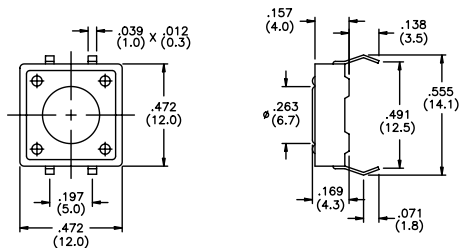
MECHANICALS, THERMALS, ENVIRONMENTALS

Plunger travel: .012" ± .006" (0.30 ± 0.15 mm)
 Actuation force: 160 grams ± 50 grams (.35 lbs.)
 Operating temperature range: -20°C to +70°C
 Storage temperature range: -30°C to +80°C for 96 hours
 Shock resistance: 30G (peak value) for 11 millisecond per Method 213B, MIL-STD-202F (3 times each on 6 sides).
 Vibration resistance: 10-55-10 Hz. for 1 minute in X, Y and Z planes per Method 201A, MIL-STD-202F (2 hours in each direction).

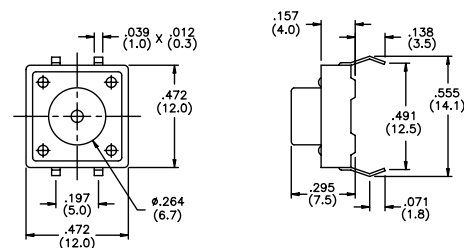
SOLDERING

Wave soldering: 260°C max. for 5 seconds max..
 Hand soldering: 30 watt iron max. controlled at 320°C for approx. 2 seconds
 Solvent washing: Non-washable.

US # MJTP1212 EU # PHAP3320
 Flush actuator



US # MJTP1212A EU # PHAP3320A
 Round actuator

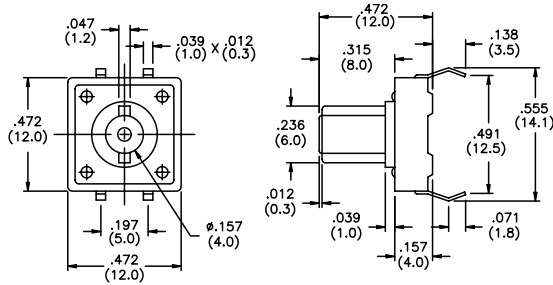


SPECIFICATIONS SUBJECT TO CHANGE WITHOUT NOTICE.

M

US # MJTP1212B EU # PHAP3320B

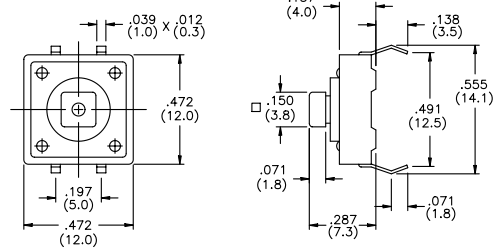
Round keyed actuator



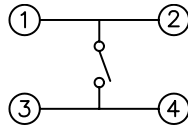
US # MJTP1212C EU # PHAP3321

Square actuator

Caps available - see below

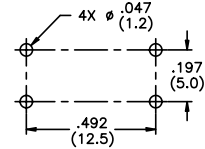


SCHEMATIC



PRINTED CIRCUIT BOARD LAYOUT

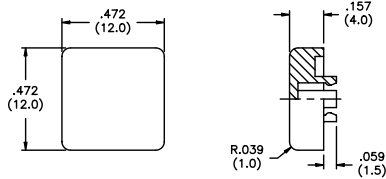
Layout Tolerances;
Linear: ± .004" (± 0,1mm)
Holes: ± .002" (± 0,05mm)



CAPS (for MJTP1212C only)

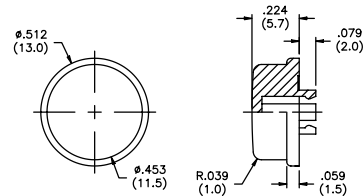
US # MJ121 EU # U5540

Square cap



US # MJ122 EU # U5550

Round cap



M

Note - add digit from table to cap part numbers above for color.
Example - **MJ1212** indicates square black cap.

No.	Color
1	blue
2	black
3	green
5	yellow
6	red
7	ivory

SPECIFICATIONS SUBJECT TO CHANGE WITHOUT NOTICE.

X-ON Electronics

Largest Supplier of Electrical and Electronic Components

Click to view similar products for [Switch Bezels / Switch Caps](#) category:

Click to view products by [Apem](#) manufacturer:

Other Similar products are found below :

[896809000](#) [LW1A-B2-R](#) [LW2A-B1-G](#) [704.604.4](#) [704.955.3](#) [F1403](#) [7527](#) [760203000](#) [760503000](#) [766601000](#) [785105000](#) [785106000](#)
[79211759](#) [MG12KB](#) [MH11](#) [MH13](#) [MHU31](#) [MJ1216](#) [MJ1226](#) [MJ33](#) [MJ612](#) [MJ626](#) [MJ627](#) [9001T8BK](#) [908-1634](#) [92-343.200](#) [92-343.400](#)
[95804.920](#) [95CAP-011](#) [95CAP-112](#) [11-932.7](#) [99-901.9](#) [99-902.9](#) [99-909.4](#) [99-909.5](#) [99-920.8](#) [A0261A](#) [11-931.2](#) [11-932.5](#) [11-936](#) [11-937](#)
[AKTSC22B](#) [AW-RF8](#) [161006](#) [1825068-6](#) [184-1872](#) [187-1872](#) [188-1471](#) [1DFBLK](#) [1D-GRY](#)