

# MJTP SERIES 6MM & 4MM SMD TACT SWITCHES

## FEATURES

- Numerous single pole-single throw momentary configurations.
- Excellent tactile feed-back (Snap dome).
- Ultra-compact size.
- Long operating life for high reliability.
- Molded-in terminals minimize wicking of flux or solder.

## MATERIALS

Gold plating available on contacts & terminals - consult factory.

Case: High temperature 4/6 nylon.  
 Actuator: High temperature 4/6 nylon.  
 Cover/Bracket: PET film, tin plated brass or stainless steel.  
 Terminals: Silver plated brass.  
 Shorting Contact: Phosphor bronze or stainless steel with silver plating.  
 L.E.D. rating: Forward voltage- 2.1 V (3.0 V Max.). Cont. fwd. current 20mA max.@ 25°C.

## GENERAL SPECIFICATIONS

### ELECTRICALS

Contact rating: 50 mA @ 12 VDC  
 Insulation resistance: 100 megohms min. (100 VDC)  
 Dielectric withstanding voltage: 250 VAC for 1 minute  
 Contact resistance: 100 milliohms max. @ 5 VDC, 10 mA  
 Electrical life: 100,000 cycles min. (1,000,000 cycles available - consult factory)  
 Contact bounce: less than 10 msec.

### MECHANICALS, THERMALS, ENVIRONMENTALS

Plunger travel: .010" + .008", - .004" (0,25 +0,2, -0,1 mm)  
 Actuation force: 160 grams ±30 grams  
 Operating temperature range: -20°C to +70°C  
 Storage temperature range: -30°C to +80°C for 96 hours  
 Shock resistance: 30G per method 213, MIL-STD-202  
 Vibration resistance: passes method 201, MIL-STD-202

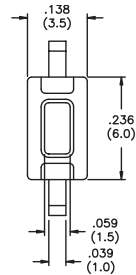
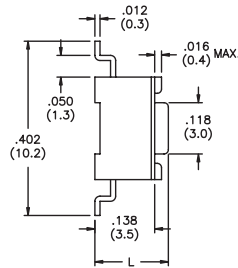
### SOLDERING (note - non-washable except for models indicated as 'process compatible').

IR reflow soldering: 240°C max. for 20 seconds max.  
 Wave soldering: 255°C max. for 5 seconds max.  
 Hand soldering: 320°C max. for 3.5 seconds max. (40 watt iron max.)

SPECIFICATIONS SUBJECT TO CHANGE WITHOUT NOTICE.

F

### MJTP1106S

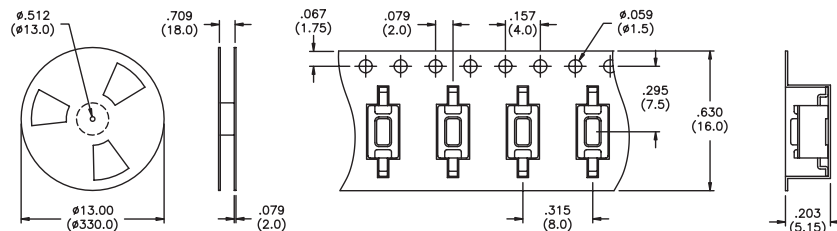


Model No.	Dim. L (in./mm)
<b>MJTP1106S</b>	.169 (4,3)
<b>MJTP1106SA</b>	.197 (5,0)

Bulk packaged.

### MJTP1106STR & MJTP1106SATR

Same as above, except supplied on tape and reel as shown.

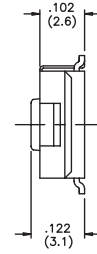
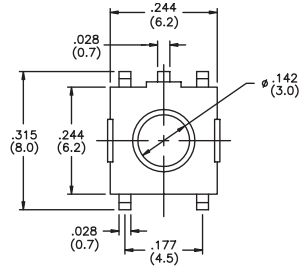


Tape & reel packaging - quantity 2200 per reel.



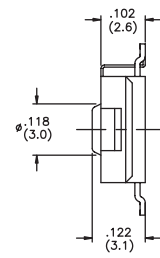
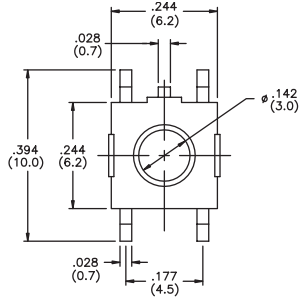
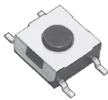
SPECIFICATIONS SUBJECT TO CHANGE WITHOUT NOTICE.

**MJTP1122**  
Grounding



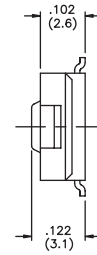
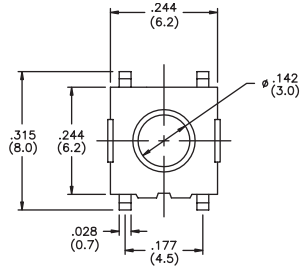
Bulk packaged.

**MJTP1122A**  
Grounding



Bulk packaged.

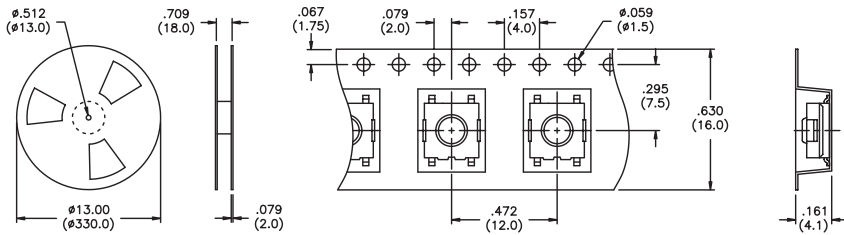
**MJTP1122B**



Bulk packaged.

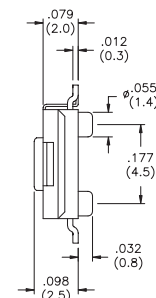
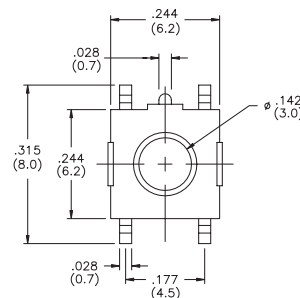


**MJTP1122TR & MJTP1122BTR**  
Same as above, except supplied on tape & reel as shown.  
Note - MJTP1122A not available on tape & reel.



Tape & reel packaging - quantity 1500 per reel.

**MJTP1125A**  
Grounding



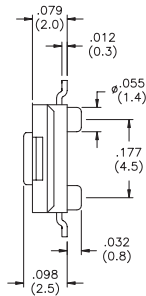
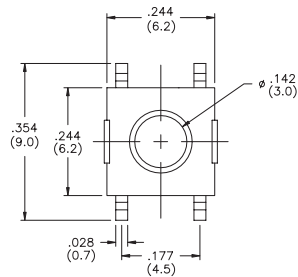
Bulk packaged.

**New!**





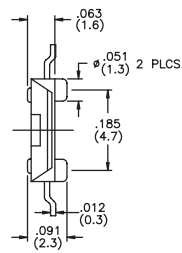
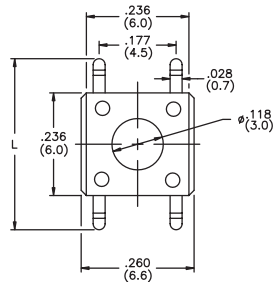
### MJTP1125B



Bulk packaged.

**New!**

### MJTP1137

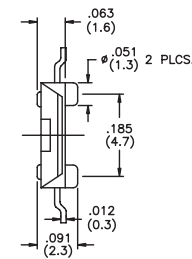
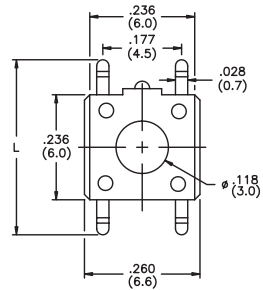


Model No.	Dim. L (in./mm)
<b>MJTP1137</b>	.315 (8,0)
<b>MJTP1137A</b>	.394 (10,0)

Bulk packaged.

### MJTP1137E

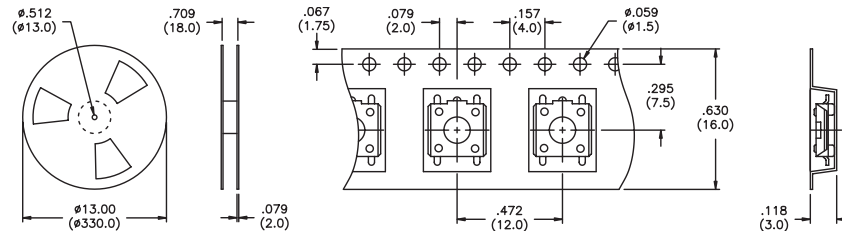
Grounding



Model No.	Dim. L (in./mm)
<b>MJTP1137E</b>	.315 (8,0)
<b>MJTP1137AE</b>	.394 (10,0)

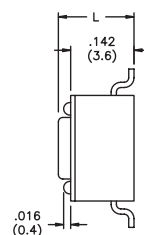
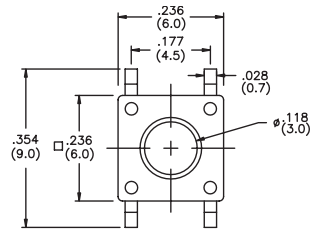
Bulk packaged.

**MJTP1125ATR.  
MJTP1125BTR.  
MJTP1137TR &  
MJTP1137ETR**  
Same as above,  
except supplied  
on tape & reel  
as shown.



Tape & reel packaging - minimum quantity 2200 per reel.

### MJTP1138



Model No.	Dim. L (in./mm)
<b>MJTP1138</b>	.170 (4,3)
<b>MJTP1138A</b>	.197 (5,0)
<b>MJTP1138B</b>	.374 (9,5)
<b>MJTP1138C</b>	.315 (8,0)
<b>MJTP1138E</b>	.287 (7,3)
<b>MJTP1138F</b>	.335 (8,5)
<b>MJTP1138G</b>	.275 (7,0)

Models MJTP1138 & MJTP1138A bulk packaged. Other models supplied in tubes (90 pcs.).

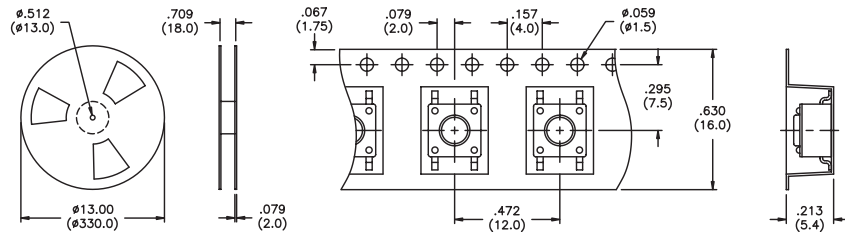
SPECIFICATIONS SUBJECT TO CHANGE WITHOUT NOTICE.





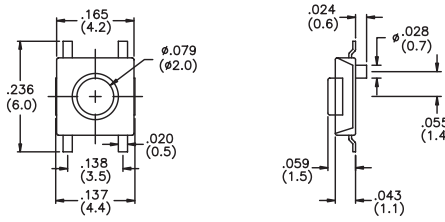
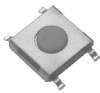
SPECIFICATIONS SUBJECT TO CHANGE WITHOUT NOTICE.

**MJTP1138TR & MJTP1138ATR**  
Same as above except supplied on tape & reel as shown.



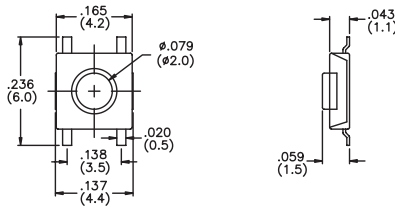
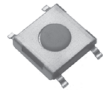
Tape & reel packaging - quantity 1250 per reel.

**MJTP1140**  
4mm x 4mm



Bulk packaged.

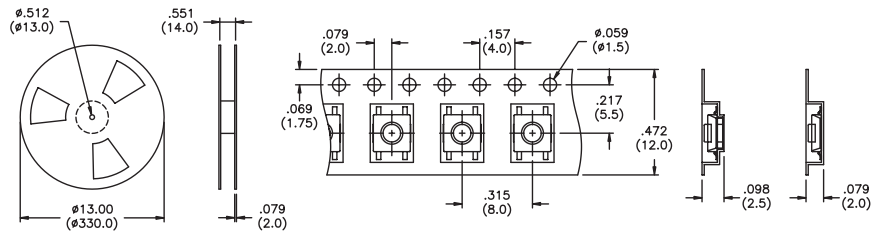
**MJTP1140A**



Bulk packaged.

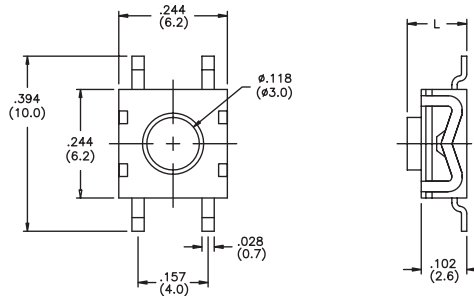
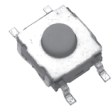


**MJTP1140TR & MJTP1140ATR**  
Same as above, except supplied on tape & reel as shown.



Tape & reel packaging - quantity 3400 per reel.

**MJTP1162**



Model No.	Dim. L (in./mm)
<b>MJTP1162</b>	.102 (2,6)
<b>MJTP1162A</b>	.134 (3,4)

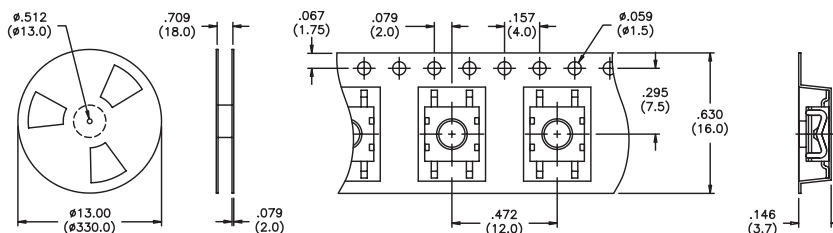
Bulk packaged.





**MJTP1162TR & MJTP1162ATR**

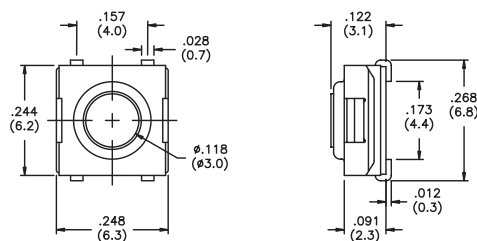
Same as above except supplied on tape & reel as shown.



Tape & reel packaging - quantity 1600 per reel.

**MJTPSJW66N**

Process compatible

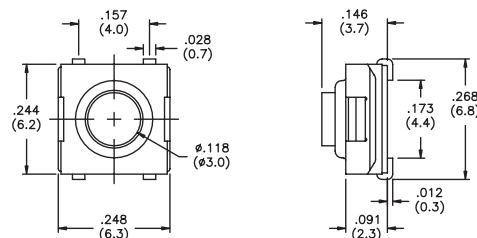


Bulk packaged.

**New!**

**MJTPSJW69N**

Process compatible

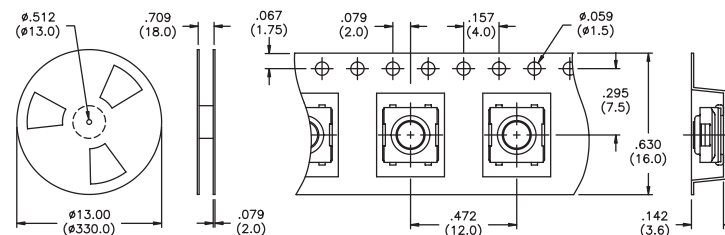


Bulk packaged.

**New!**

**MJTPSJW66NTR & MJTPSJW69NTR**

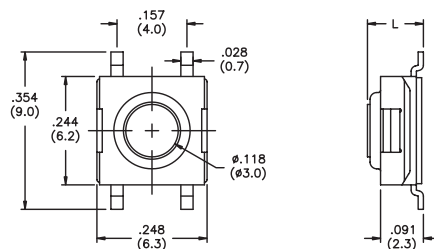
Same as above, except supplied on tape & reel as shown.



Tape & reel packaging - quantity 1600 per reel.

**MJTPSMW**

Process compatible



Model No.	Dim. L (in./mm)
<b>MJTPSMW</b>	.122 (3,1)
<b>MJTPSMWA</b>	.091 (2,3)
<b>MJTPSMWB</b>	.146 (3,7)

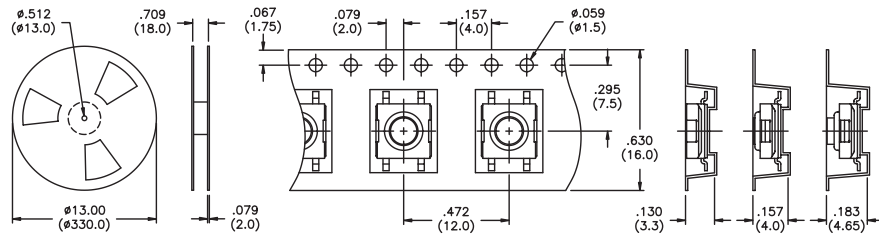
Bulk packaged.

SPECIFICATIONS SUBJECT TO CHANGE WITHOUT NOTICE.



**MJTPSMWTR**  
**MJTPSMWATR**  
**MJTPSMWBTR**

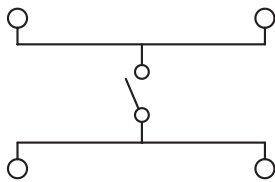
Same as above except supplied on tape & reel as shown.



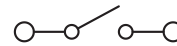
Tape & reel packaging - quantity 'MWTR' & 'MWATR' 2000 per reel, 'MWBTR' 1900 per reel.

**SCHEMATICS**

- MJTP1122
- MJTP1125
- MJTP1137
- MJTP1138
- MJTP1140
- MJTP1162
- MJTPSJW66N
- MJTPSJW69N
- MJTPSMW

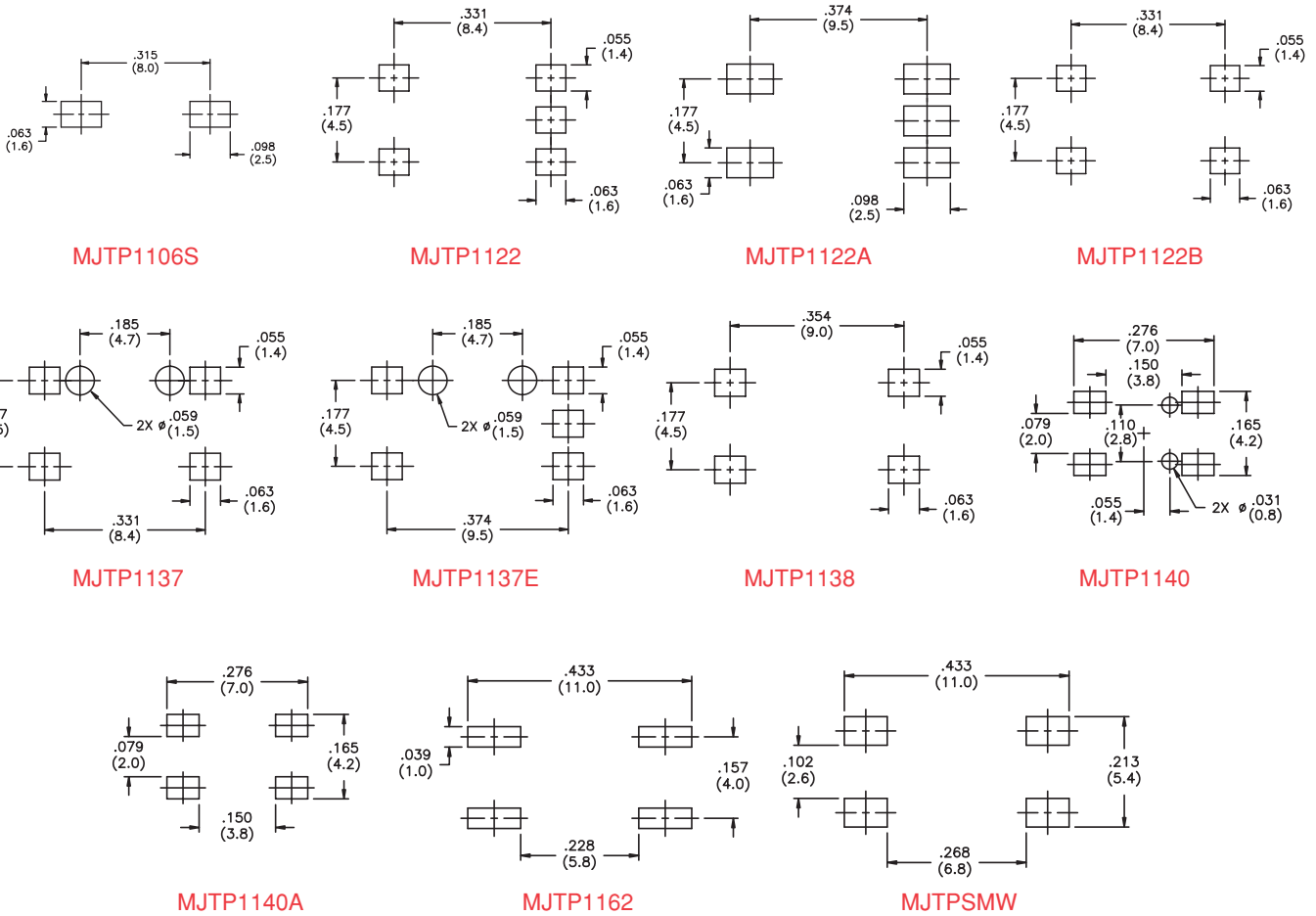


**MJTP1106**



**PRINTED CIRCUIT BOARD LAYOUTS**

Layout tolerances; Linear:  $\pm .004"$  ( $\pm 0,1\text{MM}$ ) Holes:  $\pm .002"$  ( $\pm 0,05\text{MM}$ ) Pads:  $\pm .008"$  ( $\pm 0,2\text{MM}$ )



## X-ON Electronics

Largest Supplier of Electrical and Electronic Components

*Click to view similar products for [Tactile Switches](#) category:*

*Click to view products by [Apem](#) manufacturer:*

Other Similar products are found below :

[5GTH92001](#) [5GTH9202242](#) [1-1977120-4](#) [ADTSA62RV](#) [ADTSA63KV](#) [ADTSA644NV](#) [ADTSMW66NV](#) [ADTSMW67RV](#) [B3F-3123](#) [B3F-6055A](#) [B3F-B32-01-KIT](#) [1977177-8](#) [1977266-1](#) [ADTS644KV](#) [ADTSA61RV](#) [ADTSA62KV](#) [ADTSA63NV](#) [ADTSA63RV](#) [ADTSM21NSVTR](#) [ADTSM32NVTR](#) [ADTSM63SVTR](#) [ADTSM644KVTR](#) [ADTSMW64RV](#) [ADTSMW69NV](#) [FSMRA4JHA04](#) [GS4.70F300QP](#) [3ESH9R](#) [506E00201](#) [MJTP1164TR](#) [3FTL600RAS](#) [3FTL640RAS](#) [Y96K132V0FPLFS](#) [101-TS5022T1601-EV](#) [5GSH92001](#) [KSJ0A231](#) [80SH LFG](#) [EVQ-P1D05K](#) [MJTP1162TR](#) [ADTSM63KV](#) [2-1977120-7](#) [TSJW-5.2-260-TR](#) [KMT011MNGJLHS](#) [B3WN6002S](#) [ADTSA648RV](#) [70-201.0](#) [ADTSM62KSVTR](#) [ATA600VTR](#) [ADTSG66RV](#) [ADTS61NV](#) [ADTSM62KVTR](#) [ADTSM25KSVB](#)