

# Slide Switches

Microminiature slide switches •



## DISTINCTIVE FEATURES

- Ultra compact size
- Low profile
- Molded-in or epoxy sealed terminals
- Washing not recommended



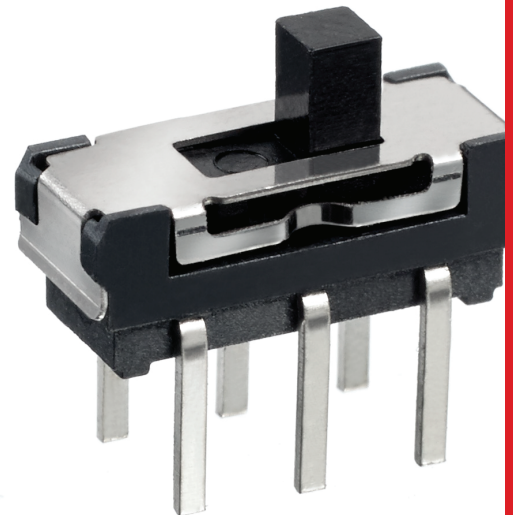
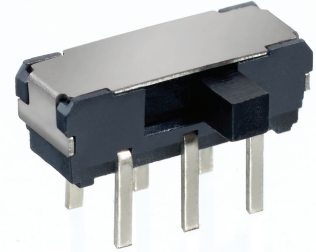
## ENVIRONMENTAL SPECIFICATIONS

- Operating Temperature: -10 °C to +60 °C (14 °F to +140 °F)
- Storage Temperature: -30 °C to +80 °C (-22 °F to +176 °F) for 96 hours
- Solder heat resistance: 260°C ( 500 °F ) max for 5 seconds



## ELECTRICAL SPECIFICATIONS

- Contact rating: 100 mA 12VDC
- Contact Resistance: 20  $\Omega$  max.
- Insulation Resistance: 100 M $\Omega$  min. at 500VDC
- Electrical life: 10,000 cycles min.



# Slide switch series

Microminiature slide switches • MHSS SERIES

## SPECIFICATION

Contact rating: 300 mA at 6 VDC  
 Initial contact resistance: 60 milliohms max.  
 Insulation resistance: 100 megohms min. at 100 VDC  
 Dielectric strength: 100 volts RMS at sea level  
 Electrical life: 5,000 cycles min.  
 Operating temperature range: -20°C to +70°C  
 Solder heat resistance: 350°C max. for 3 seconds  
 Washing not recommended

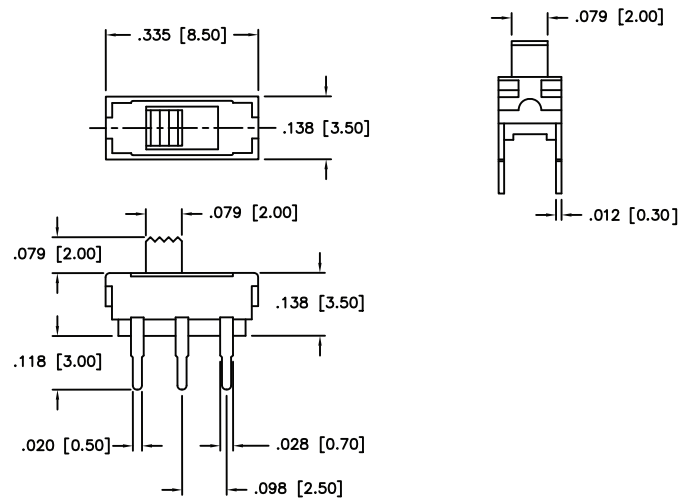
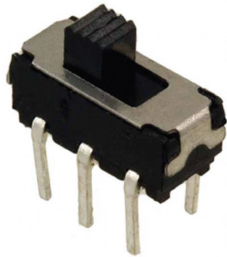
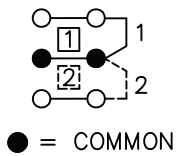
## FEATURES

- Excellent tactile feedback (detent action)
- Molded-in terminals minimize flux or solder entry
- Ultra compact case size
- Low Profile

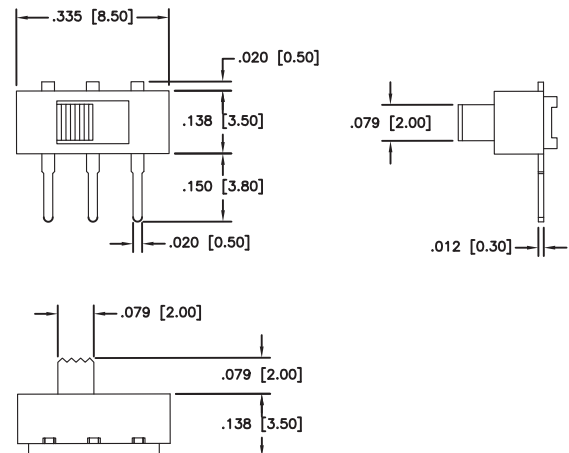
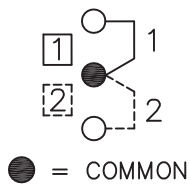
## MATERIALS

Contacts & terminals: Silver plated  
 Case: 30% Glass filled nylon, type 6/6, black  
 Actuator: Nylon, type 6/6, black

### MHSS1104



### MHSS1105



# Slide switch series

Microminiature slide switches • MS SERIES

## SPECIFICATION

Contact rating: 300 mA at 6 VDC  
 Initial contact resistance: 70 milliohms max.  
 Insulation resistance: 100 megohms min. at 500 VDC  
 Dielectric strength: 500 volts RMS at sea level  
 Electrical life: 10,000 cycles min.  
 Operating temperature range: -10°C to +60°C  
 Solder heat resistance: 260°C max. for 3 seconds  
 Washing not recommended

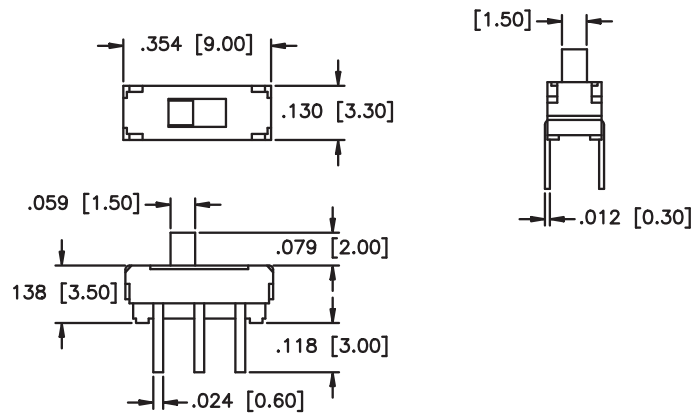
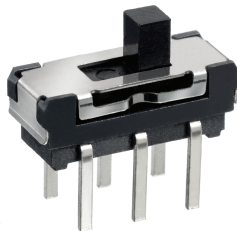
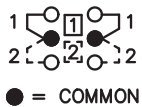
## FEATURES

- Low profile
- Insert molded terminals
- Stainless steel cover

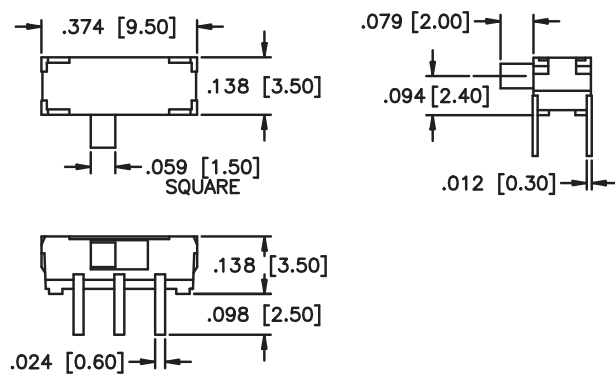
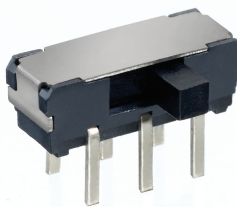
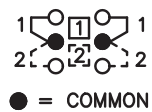
## MATERIALS

Contacts & terminals: Silver plated  
 Cover: Stainless steel  
 Actuator: Thermoplastic  
 Base: High temperature thermoplastic  
 Terminal seal: Insert molded

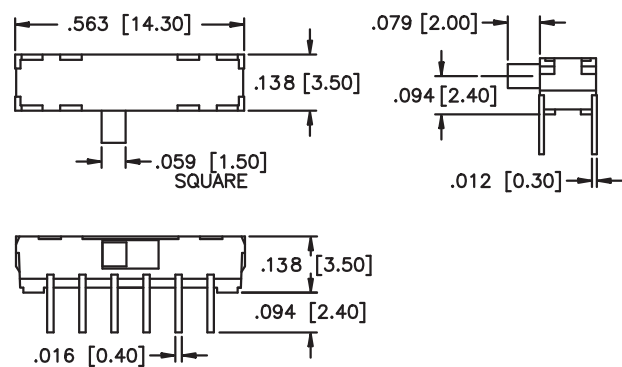
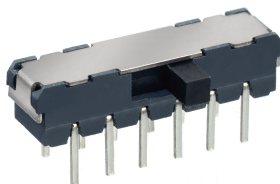
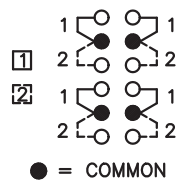
### MS22



### MS22R



### MS42R



# Slide switch series

Microminiature slide switches • MMS SERIES

## SPECIFICATION

Contact rating: 300 mA at 30 VDC  
 Initial contact resistance: 25 milliohms max.  
 Insulation resistance: 100 megohms min. at 500 VDC  
 Dielectric strength: 500 volts RMS for 1 minute  
 Electrical life: 10,000 cycles min.  
 Operating temperature range: -20°C to +70°C  
 Solder heat resistance: 255°C max. for 5 seconds  
 Washing not recommended

## FEATURES

- Bifurcated wiping contact design
- Low profile
- Epoxy sealed terminals

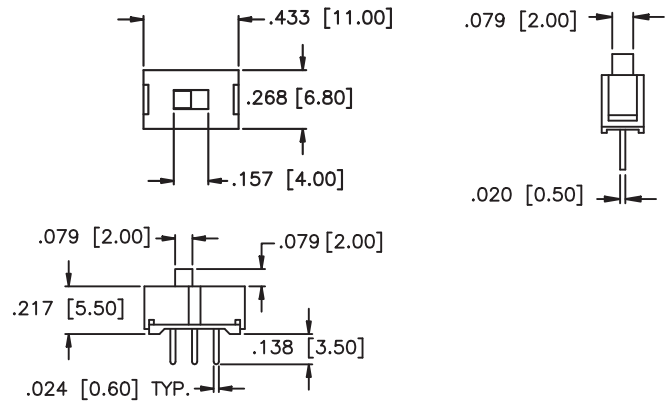
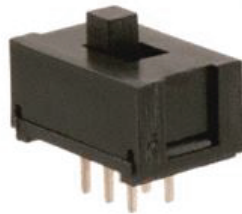
## MATERIALS

Contacts & terminals: Silver plated  
 Case: Polyacetal  
 Actuator: PBT  
 Base: Glass filled PBT  
 Terminal seal: Epoxy or phenol resin

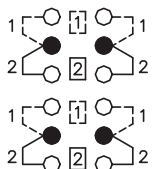
### MMS2214



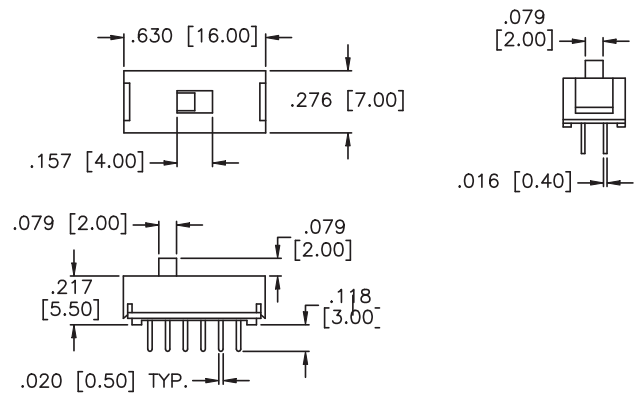
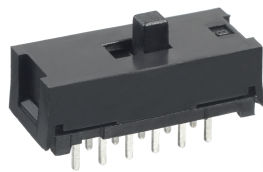
● = COMMON



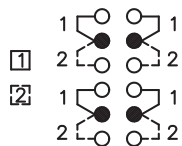
### MMS42



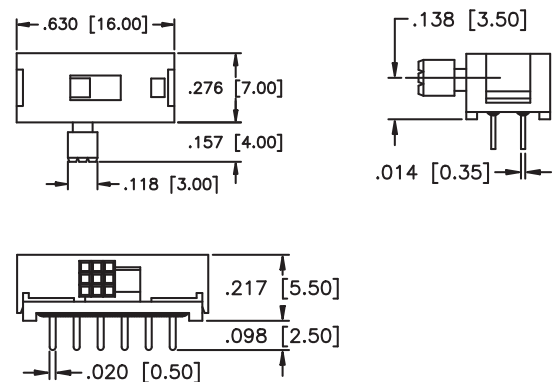
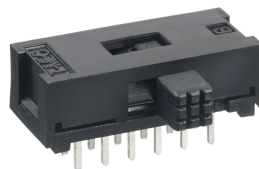
● = COMMON



### MMS42R



● = COMMON

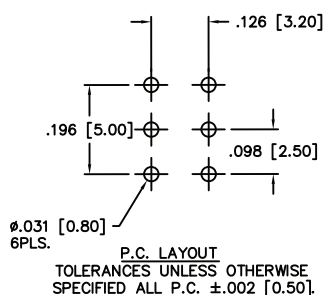


# Slide switch series

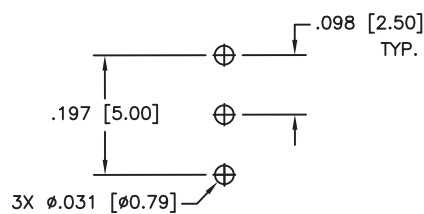
Microminiature slide switches •

 PCB LAYOUT

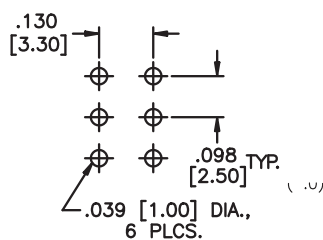
MHSS1104



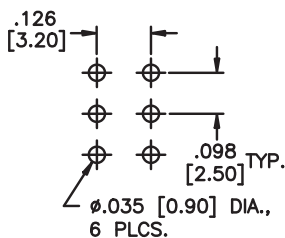
MHSS1105



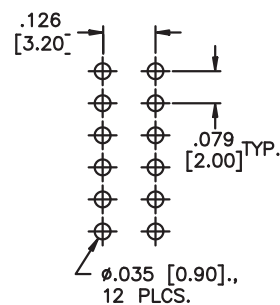
MS22



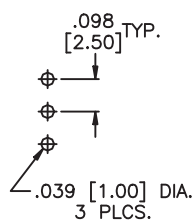
MS22R



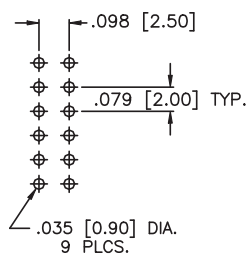
MS42R



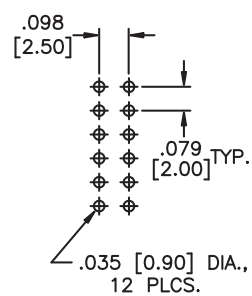
MMS2214



MMS42



MMS42R



## X-ON Electronics

Largest Supplier of Electrical and Electronic Components

*Click to view similar products for [Slide Switches](#) category:*

*Click to view products by [Apem](#) manufacturer:*

Other Similar products are found below :

[6-1437581-1](#) [M43R](#) [MHS123K15D](#) [MHS133K](#) [MHSS1104A](#) [MMD](#) [GH49S010001](#) [MSS12A](#) [EPS1PC1](#) [1825074-1](#) [1825160-3](#) [1825167-2](#)  
[1825289-7](#) [K232CB](#) [25139NLDB](#) [25449NAH](#) [SLB1240R45](#) [1825078-1](#) [1825080-4](#) [1825269-1](#) [1825270-2](#) [STS141RA04](#) [T2215BEN506](#)  
[GH46P000001](#) [GH46W000001](#) [GH49P010001](#) [25339NA](#) [M42A](#) [TG36P000000](#) [TG36P000050](#) [AYZ0202AG](#) [47227LFE](#) [49331L](#) [50208L](#)  
[L203091MS02Q](#) [4-1437581-7](#) [X2225CR-437W](#) [49329L](#) [1101M1S3ZB8E2](#) [1-1437581-1](#) [MSS2225G04](#) [TG39W000000](#) [1825075-1](#)  
[MSS42G](#) [TG36WS80065](#) [T105S1CWZBE](#) [SLB124145](#) [SLB1280R5](#) [SLB1340R45](#) [25136NLDB](#)