

# MSG series

Rugged switch guards for switch series 12000 - 3500 - 600H - 6000



## DISTINCTIVE FEATURES

Robust

For harsh environments

Modern, patented design



## GENERAL SPECIFICATIONS

- APEM SAS patented design
- Operating temperature : -40 °C to +85 °C (-40 °F to +185 °F)
- Storage temperature : -55 °C to +85 °C (-67 °F to +185 °F)
- Salt spray : IEC 60068-2-11, test KA, 96 hours
- Mechanical life : 20,000 cycles
- Switch guards are designed to prevent accidental lever operation on switches with  $\varnothing$  11.9 (.468) or  $\varnothing$  12 (.472) threaded bushing and lever length 17.5 (.688) outside bushing.  
When the guard is raised, the lever can be operated freely.  
When the guard is fully depressed, the lever is reset/locked in a stable position.  
Note : For correct switch operation, the switch guard should be adjusted properly (see "Mounting" below).



## MATERIALS

- Support plate : black stainless steel
- Cap : thermoset

APEM products may be recycled at end-of-life for the re-claiming of valuable metal components.



## PANEL CUT-OUT

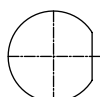
FOR BUSHING WITH KEYWAY

FOR FLATTED BUSHING

K



F



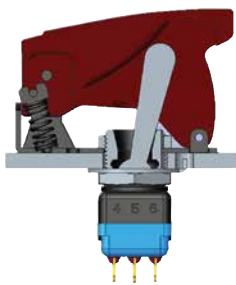
The company reserves the right to change specifications without notice.



# MSG series

Rugged switch guards for switch series 12000 - 3500 - 600H - 6000

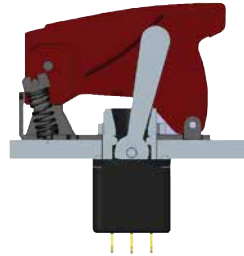
## MOUNTING



Standard

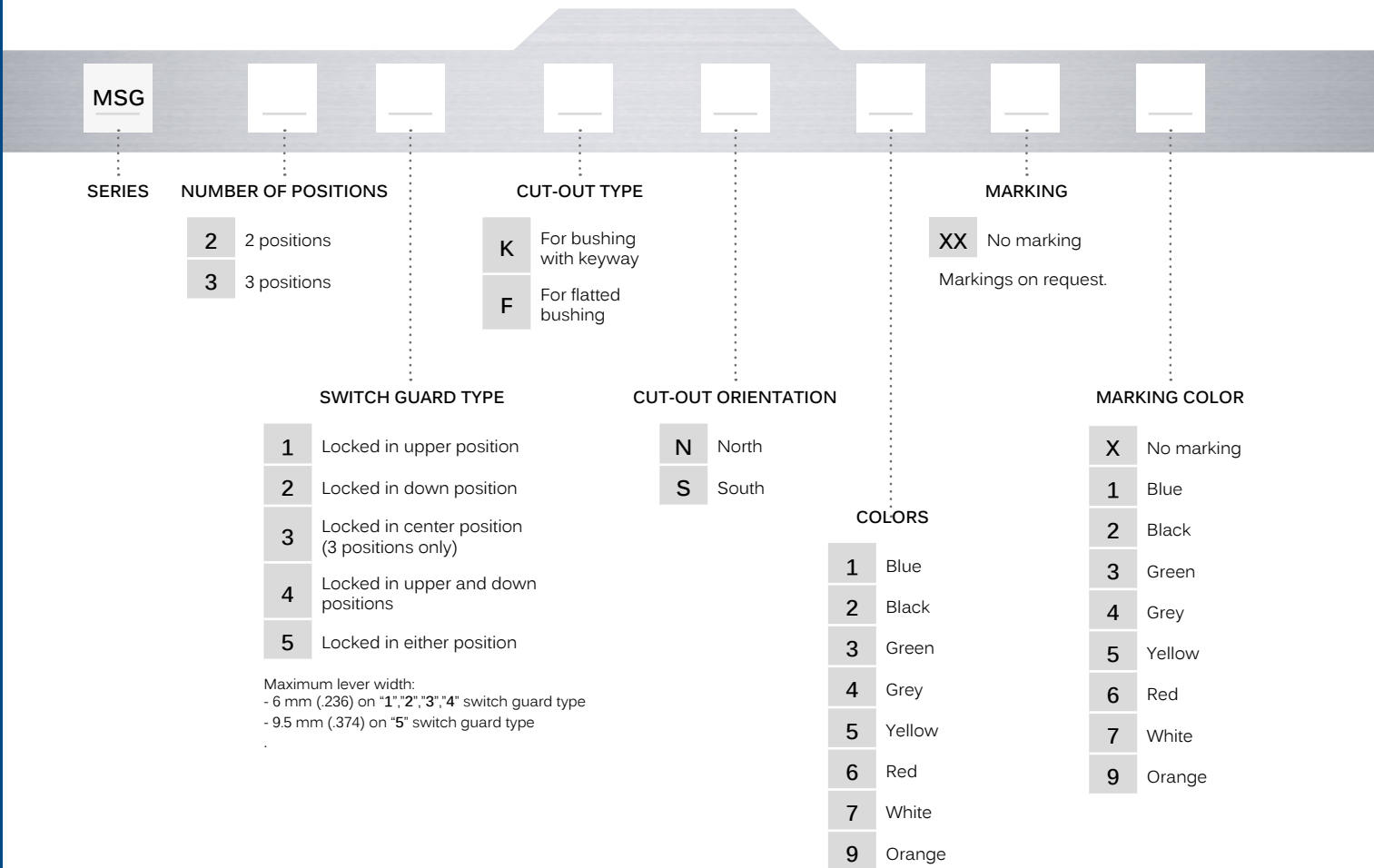


With K sealing option



With X408 sealing option

## BUILD YOUR PART NUMBER



## ABOUT THIS SERIES

On the following pages, you will find successively basic part numbers and options in the same order as in above chart.

- Notice** : please note that not all combinations of above numbers are available. Refer to the following pages for further information.
- Mounting accessories** : supplied with the switch or to order separately (see "Hardware" section of website).

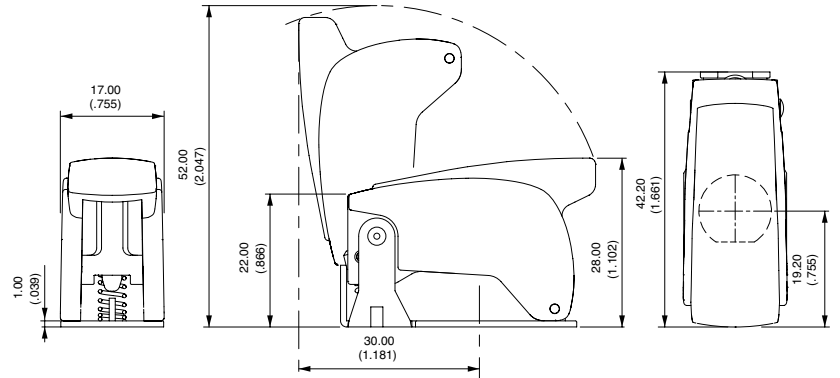
# MSG series

Rugged switch guards for switch series 12000 - 3500 - 600H - 6000

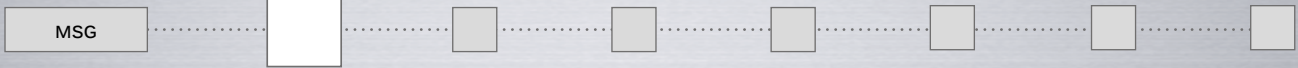
## DIMENSIONS



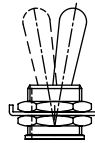
Note : Ø 1.80 mm holes for wiring a seal are standard on all models.



## NUMBER OF POSITIONS



- 2 2 positions
- 3 3 positions



2



3

## SWITCH GUARD TYPE



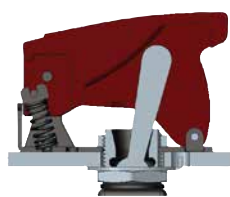
- 1 Locked in upper position
- 2 Locked in down position
- 3 Locked in center position (3 positions only)
- 4 Locked in upper and down positions
- 5 Locked in either position

Maximum lever width:

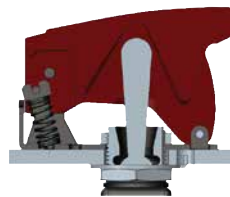
- 6 mm (.236) on "1","2","3","4" switch guard type
- 9.5 mm (.374) on "5" switch guard type



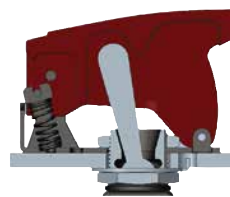
1



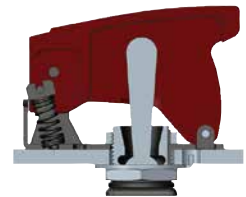
2



3



4



5

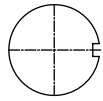
# MSG series

Rugged switch guards for switch series 12000 - 3500 - 600H - 6000

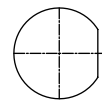
## CUT-OUT TYPE



- K For bushing with keyway
- F For flatted bushing

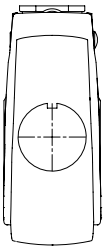
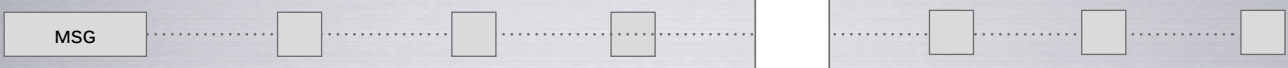


K

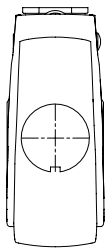


F

## CUT-OUT ORIENTATION

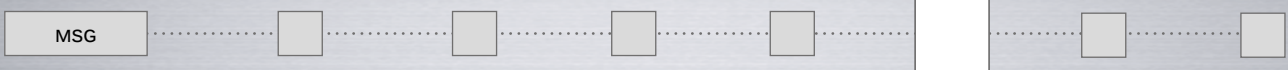


N



S

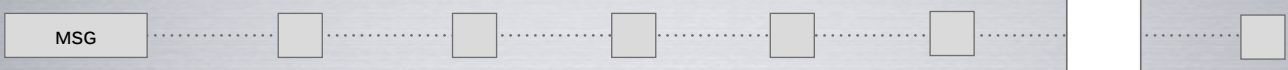
## COLORS



- 1 Blue
- 2 Black
- 3 Green
- 4 Grey
- 5 Yellow
- 6 Red
- 7 White
- 9 Orange

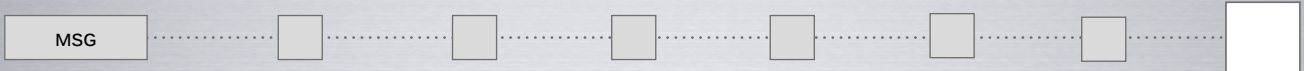


## MARKING



- XX No marking
- On request.

## MARKING COLOR



- |    |            |   |        |   |        |
|----|------------|---|--------|---|--------|
| XX | No marking | 3 | Green  | 6 | Red    |
| 1  | Blue       | 4 | Grey   | 7 | White  |
| 2  | Black      | 5 | Yellow | 9 | Orange |

## X-ON Electronics

Largest Supplier of Electrical and Electronic Components

*Click to view similar products for [Switch Fixings](#) category:*

*Click to view products by [Apem](#) manufacturer:*

Other Similar products are found below :

[893102000](#) [00-5150](#) [LZZ1A](#) [0098.9234](#) [M2PA-5011](#) [630155](#) [635401](#) [6PA113](#) [6PA147-E6](#) [6PA148-E6](#) [6PA32](#) [6PA9](#) [700106](#) [700109](#)  
[700303A56](#) [700C1GRY](#) [700C2GRN](#) [704-6001](#) [704.960.9](#) [704.965.2](#) [704.965.6](#) [704.966.0](#) [7089-3](#) [710082-B11](#) [71M1048](#) [757200264](#)  
[764300000](#) [MHU35](#) [MHU37](#) [807039-1](#) [825.003.011](#) [825.005.011](#) [825.053.011](#) [825.055.011](#) [826.000.071](#) [827.020.011](#) [827.400.021](#)  
[835.900.023](#) [MML52C10C](#) [MML52E10C](#) [MML92HGH](#) [MML93K](#) [84211M02CNNS](#) [84212M02CNNS](#) [842.500.011](#) [843.000.011](#) [843187-000](#) [843487-000](#) [84-901](#) [84-902](#)