

MTP SERIES KEY SWITCHES

FEATURES

- Totally sealed - process compatible.
- Excellent tactile feed-back (snap dome).
- Shock & vibration resistance.
- SPST momentary action.

SPECIFICATIONS SUBJECT TO CHANGE WITHOUT NOTICE.

GENERAL SPECIFICATIONS

ELECTRICALS

Contact rating:	50 mA @ 12 VDC
Insulation resistance:	100 megohms minimum at 100 VDC
Dielectric withstanding voltage:	250 VAC for 1 minute
Contact resistance:	100 milliohms maximum
Life:	100,000 cycles minimum

MECHANICALS, THERMALS

Operating force:	160±50 grams
Plunger travel:	.010 +.008 / -.004" (.25 +0.2 / -0.1mm)
Shock:	Withstands 80 g for 3 cycles in each of 6 directions (18 cycles total)
Vibration:	Withstands 10-55 Hz. for 2 hours in each of 3 mutually perpendicular planes, including direction of stem travel.
Operating temperature range:	-20°C to +70°C
Storage temperature range:	-30°C to +80°C

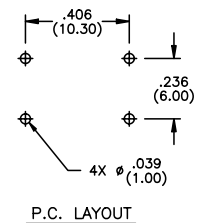
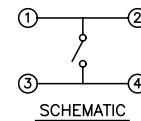
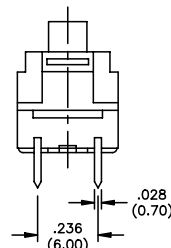
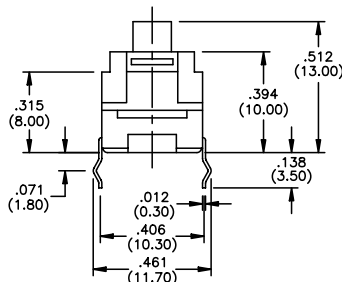
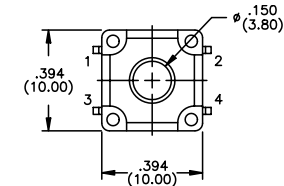
SOLDERING

Wave soldering:	255°C max. for 5 seconds maximum. Preheat - 100°C max. for 45 sec. max.
Manual soldering:	350°C ± 10°C for 3 seconds maximum
Solvent washing:	Washable.

MATERIALS

Case:	Polyetherimide
Cover:	PBT
Actuator:	Acetal
Terminals:	Silver plated brass
Shorting Contact:	Silver plated copper alloy
Internal seal:	Nitrile

US # MTP1149
EU # PHAP3353
 Process compatible



M

X-ON Electronics

Largest Supplier of Electrical and Electronic Components

Click to view similar products for [Tactile Switches](#) category:

Click to view products by [Apem](#) manufacturer:

Other Similar products are found below :

[5GTH92001](#) [5GTH9202242](#) [1-1977120-4](#) [ADTSA62RV](#) [ADTSA63KV](#) [ADTSA644NV](#) [ADTSMW66NV](#) [ADTSMW67RV](#) [B3F-3123](#) [B3F-6055A](#) [B3F-B32-01-KIT](#) [1977177-8](#) [1977266-1](#) [ADTS644KV](#) [ADTSA61RV](#) [ADTSA62KV](#) [ADTSA63NV](#) [ADTSA63RV](#) [ADTSM21NSVTR](#) [ADTSM32NVTR](#) [ADTSM63SVTR](#) [ADTSM644KVTR](#) [ADTSMW64RV](#) [ADTSMW69NV](#) [FSMRA4JHA04](#) [GS4.70F300QP](#) [3ESH9R](#) [506E00201](#) [MJTP1164TR](#) [3FTL600RAS](#) [3FTL640RAS](#) [Y96K132V0FPLFS](#) [101-TS5022T1601-EV](#) [5GSH92001](#) [KSJ0A231](#) [80SH LFG](#) [EVQ-P1D05K](#) [MJTP1162TR](#) [ADTSM63KV](#) [2-1977120-7](#) [TSJW-5.2-260-TR](#) [KMT011MNGJLHS](#) [ADTSA648RV](#) [70-201.0](#) [ADTSM62KSVTR](#) [ATA600VTR](#) [ADTSG66RV](#) [ADTS61NV](#) [ADTSM62KVTR](#) [ADTSM25KSVB](#) [ADTS65RV](#)