

NDP series

Piano style • dual in line switches



DISTINCTIVE FEATURES

2 to 12 Way

Self-cleaning wiping contacts

Gold plated terminals

Spray washable with tape seal



ENVIRONMENTAL SPECIFICATIONS

- Operating Temperature: -20 °C to +70 °C (-4 °F to +158 °F)
- Storage Temperature: -40 °C to +85 °C (-40 °F to +185 °F)
- Spray washable (with tape seal)



ELECTRICAL SPECIFICATIONS

- Max. Current/Voltage Rating:
 - Switching: 25 mA 24 VDC
 - Contact rating: 100 mA 50 VDC
- Initial Contact Resistance: 50 mΩ max
- Insulation Resistance: 100 MΩ min. at 500 VDC
- Dielectric Strength: 500 VAC min.
- Electrical Life: 2,000 cycles



MECHANICAL SPECIFICATIONS

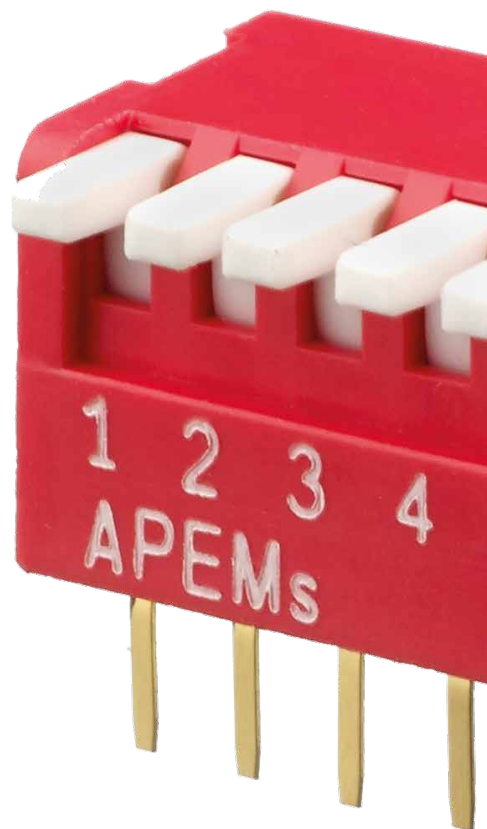
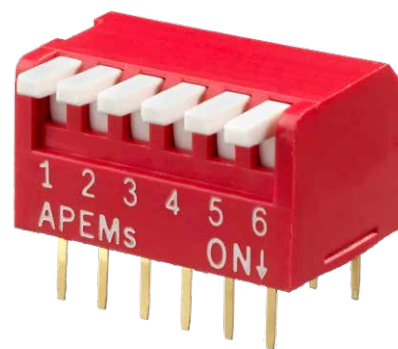
- Operating force: 400 gf (3.92 N) max



MATERIALS

- Case & Actuator: PBT
- Base: PA66
- Contact: Gold plated
- Terminal: Gold plated brass
- Protection tape: Polyimide

The company reserves the right to change specifications without notice.



NDP series

Piano style • dual in line switches



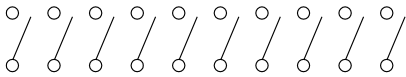
PACKAGING

IC TUBE THROUGH-HOLE

Number of ways	No tape seal	With tape seal
2	70 pcs	65 pcs
3	50 pcs	49 pcs
4		39 pcs
5		32 pcs
6		27 pcs
7		24 pcs
8		21 pcs
9		19 pcs
10		17 pcs
12		14 pcs



CIRCUIT

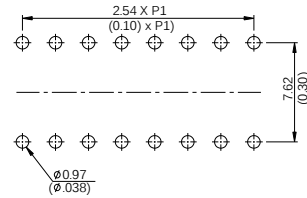


2,3,4,5,6,7,8,9,10,12 way only



PCB LAYOUT

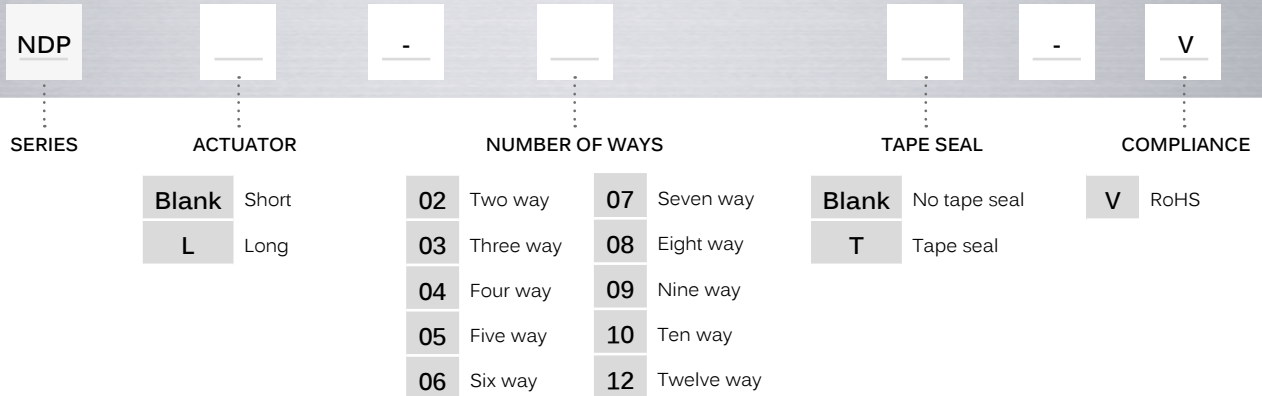
THROUGH-HOLE



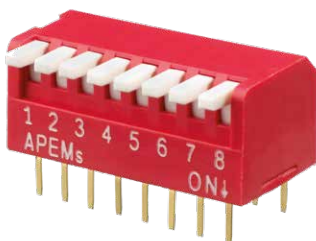
NDP series

Piano style • dual in line switches

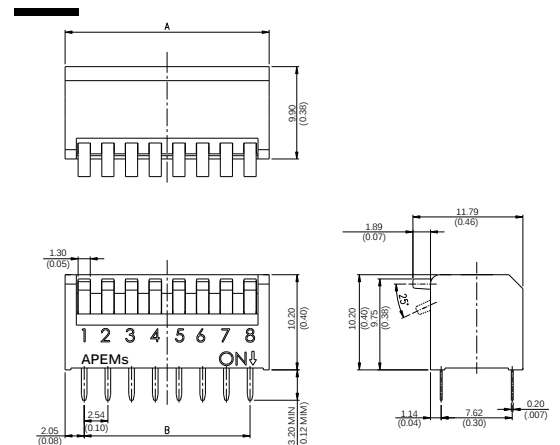
BUILD YOUR PART NUMBER



8 WAY STANDARD PROFILE THROUGH-HOLE PIANO STYLE



Number of ways	Dimension A	Dimension B
2	6.44 (0.25)	2.54 (0.1)
3	8.98 (0.35)	5.08 (0.2)
4	11.52 (0.45)	7.62 (0.3)
5	14.06 (0.55)	10.16 (0.4)
6	16.60 (0.65)	12.70 (0.5)
7	19.14 (0.75)	15.24 (0.6)
8	21.68 (0.85)	17.78 (0.7)
9	24.22 (0.95)	20.32 (0.8)
10	26.76 (1.05)	22.86 (0.9)
12	31.84 (1.25)	27.94 (1.1)



X-ON Electronics

Largest Supplier of Electrical and Electronic Components

Click to view similar products for [Other Tools](#) category:

Click to view products by [Apem](#) manufacturer:

Other Similar products are found below :

[CR-05FL7--150R](#) [CR-05FL7--698K](#) [899-2-KT46](#) [899-5-KT46](#) [CR-0AFL4--332K](#) [CR-12FP4--260R](#) [CRCW04021100FRT7](#)
[CRCW04021961FRT7](#) [5800-0090](#) [CRCW04024021FRT7](#) [CRCW040254R9FRT7](#) [CRCW0603102JRT5](#) [59065-5](#) [00-8273-RDPP](#) [00-8729-](#)
[WHPP](#) [593033](#) [593058](#) [593072](#) [593564100](#) [593575](#) [593591](#) [593593](#) [011349-000](#) [CRCW08052740FRT1](#) [LUC-012S070DSM](#) [LUC-](#)
[018S070DSP](#) [599-2021-3-NME](#) [599-JJ-2021-03](#) [00-5080-YWPP](#) [5E4750/01-20R0-T/R](#) [LW1A-L1-GL](#) [LW1A-P1-GD](#) [LW1L-A1C10V-GL](#)
[LW1L-M1C70-A](#) [0202-0173](#) [00-9089-RDPP](#) [00-9300-RDPP](#) [CRCW2010331JR02](#) [01-1003W-8/32-10](#) [601-GP-08-KT39](#) [601-JJ-06](#) [601-SPB](#)
[601YSY](#) [602-JJ-03](#) [602SPB](#) [602Z](#) [603-JJ-07-FP](#) [603-JJY-04](#) [604J](#) [604-JJ-05](#)