

# P36 series

Low profile rotary code switches



## DISTINCTIVE FEATURES

- 3 actuator types
- Sub-miniature size
- Solder and flux sealed, washable



## ENVIRONMENTAL SPECIFICATIONS

- Operating temperature: -50 °C to +125 °C (-58 °F to +257 °F)



## ELECTRICAL SPECIFICATIONS

- Operating voltage :  $\leq 42$  V
- Contact load, static :  $\leq 0.4$  A
- Contact load, dynamic :  $\leq 0.1$  A
- Initial contact resistance : 80 m $\Omega$  max.
- Insulation resistance : 100 M $\Omega$  min.



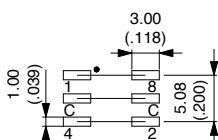
## MATERIALS

- Base : UL94-V0, high temperature thermoplastic
- Cover : stainless steel
- Actuator : PA 4.6 nylon
- Contacts : gold over nickel plated phosphor bronze
- Terminals : tin plated

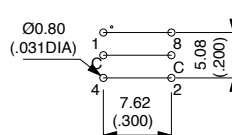


## PCB MOUNTING

SURFACE MOUNT



THROUGH-HOLE



The company reserves the right to change specifications without notice.



# P36 series

Low profile rotary code switches



## SOLDERING

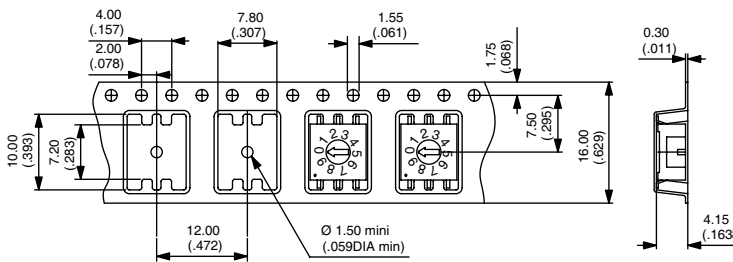
- DIN CEI 68-2-20
- Manual soldering : 340 °C (644 °F) max. for 2 seconds max.
- Wave soldering : 280 °C (536 °F) max. for 5 seconds max.
- Reflow soldering : 260 °C (500 °F) max. for 10 seconds max.



## PACKAGING

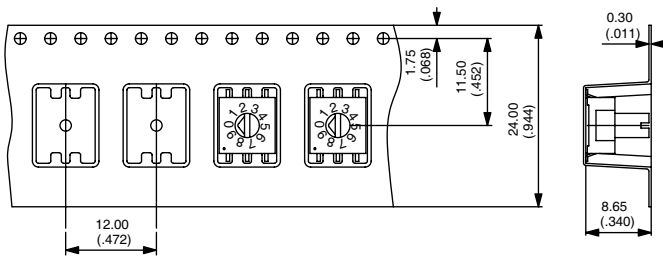
P36SMT1..

1,300 pieces per reel  
dim.A = 22.4 mm  
dim B = 16.4 mm



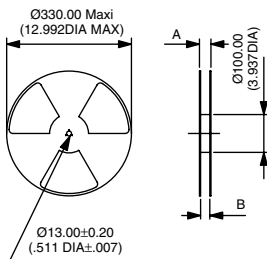
P36SMT3..  
P36SMT8..

600 pieces per reel  
dim.A = 30.4 mm  
dim B = 24.4 mm



Reels : To order a SMT product with tape & reel packaging, add "TR" at the end of its part number.

Tubes : 50 pieces (through-hole or SMT) per tube.

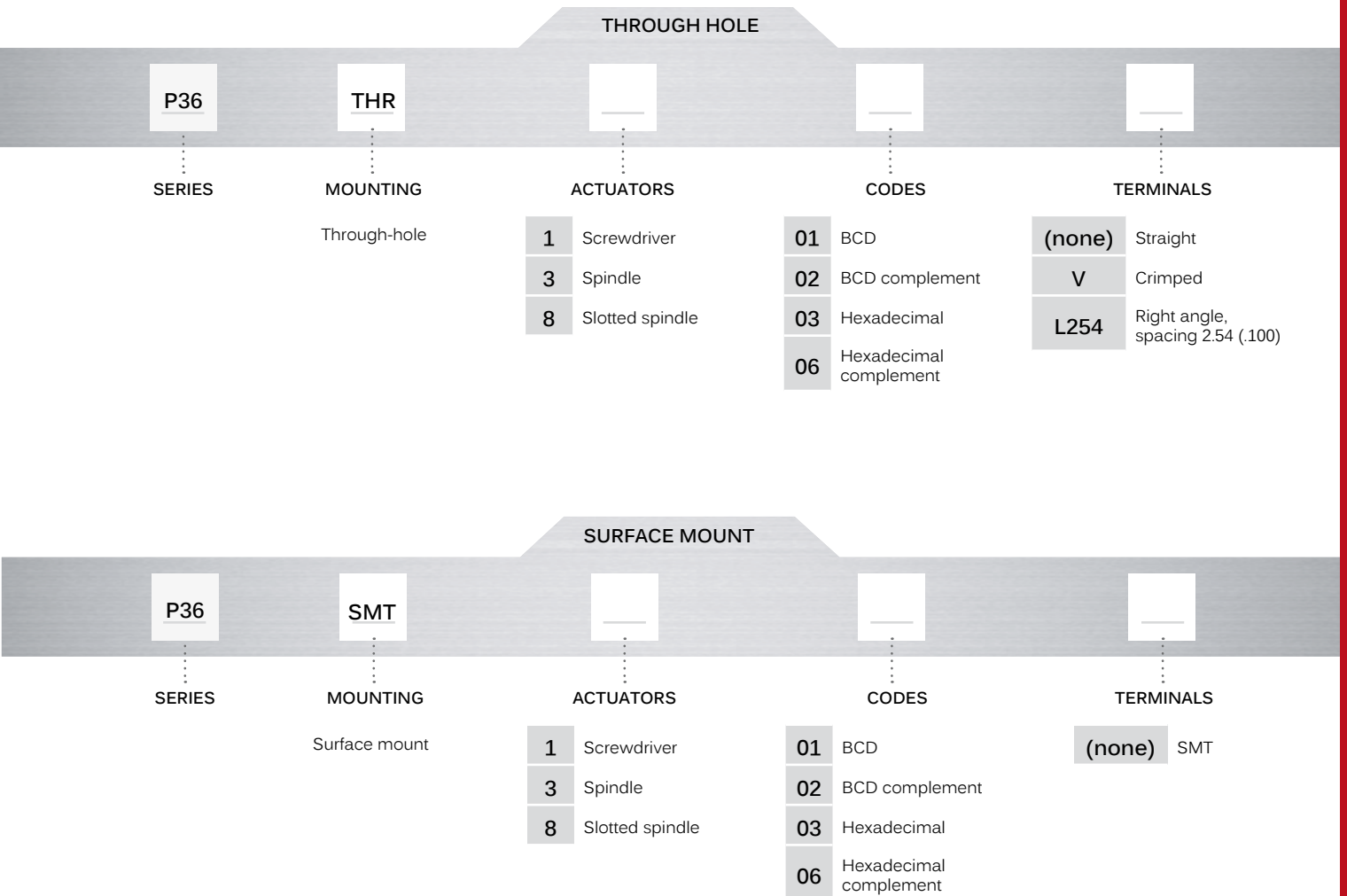


# P36 series

Low profile rotary code switches



## BUILD YOUR PART NUMBER



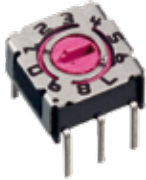
## ABOUT THIS SERIES

On the following pages, you will find successively basic part numbers of switches and options in the same order as in above chart.

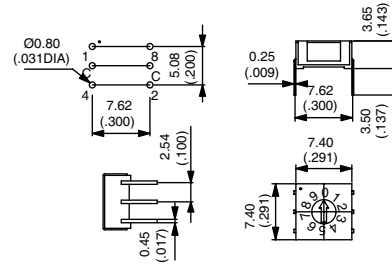
# P36 series

Low profile rotary code switches

## THROUGH-HOLE



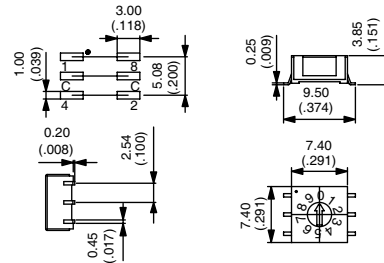
P36THR



## SURFACE MOUNT



P36SMT



# P36 series

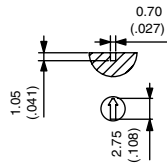
Low profile rotary code switches

## ACTUATORS

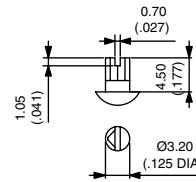


- 1 Screwdriver
- 3 Spindle
- 8 Slotted spindle

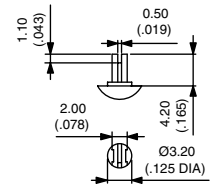
**Actuator colour**  
depending on codes :  
BCD : Red  
BCD compl. : Orange  
Hexadecimal : Grey  
Hexadec. compl. : White



1



3



-8

## CODES



- 01 BCD
- 02 BCD complement
- 03 Hexadecimal
- 06 Hexadecimal complement

POSITION	C	1	2	4	8	MARKING
0	●					0
1	●	●				1
2	●		●			2
3	●	●	●			3
4	●			●		4
5	●	●			●	5
6	●		●	●		6
7	●	●	●	●		7
8	●				●	8
9	●	●			●	9

01

POSITION	C	1	2	4	8	MARKING
0	●	●	●	●	●	0
1	●		●	●	●	1
2	●	●		●	●	2
3	●			●	●	3
4	●	●	●		●	4
5	●		●		●	5
6	●	●			●	6
7	●				●	7
8	●	●	●	●		8
9	●		●	●		9

02

POSITION	C	1	2	4	8	MARKING
0	●					0
1	●	●				1
2	●		●			2
3	●	●	●			3
4	●			●		4
5	●	●			●	5
6	●		●	●		6
7	●	●	●	●		7
8	●				●	8
9	●	●			●	9
10	●		●		●	10
11	●	●	●		●	11
12	●			●	●	12
13	●	●		●	●	13
14	●		●	●	●	14
15	●	●	●	●	●	15

03

POSITION	C	1	2	4	8	MARKING
0	●	●	●	●	●	0
1	●		●	●	●	1
2	●	●		●	●	2
3	●			●	●	3
4	●	●	●		●	4
5	●		●		●	5
6	●	●			●	6
7	●				●	7
8	●	●	●	●		8
9	●		●	●		9
10	●	●		●		10
11	●			●		11
12	●	●	●			12
13	●		●			13
14	●	●				14
15	●					15

06

## TERMINALS

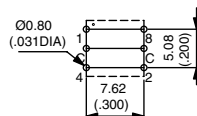


- (none) Straight or SMT
- V Crimped \*
- L254 Right angle, spacing 2,54 (.100) \*

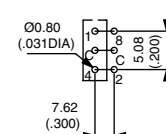
\* Not available with surface mount mounting



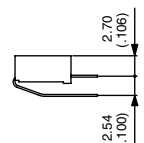
SMT



Crimped



Right angle



## X-ON Electronics

Largest Supplier of Electrical and Electronic Components

*Click to view similar products for [Coded Rotary Switches](#) category:*

*Click to view products by [Apem](#) manufacturer:*

Other Similar products are found below :

[94HCB08W](#) [94HCB10WR](#) [PT65503RT](#) [P60AS703](#) [P60A503](#) [P65THR101L254](#) [RTE16 LFTSVTPL 13613](#) [GSDR-10S](#) [CRD10CM0SBR](#)  
[DRS4116](#) [RTE1600R44](#) [ERD110RSZ](#) [ERD116CSZ](#) [ERD116RSZ](#) [94HBB16WT](#) [94HBB10WT](#) [94HAC10T](#) [94HAB16WT](#) [94HAB10WT](#)  
[94HAB10RAT](#) [94HAB08WT](#) [ERD216RSZ](#) [ND3FR10P](#) [DRR3110](#) [S-4010TA](#) [94HCB16WT](#) [94HCB16T](#) [94HCB10RAT](#) [94HCB08T](#)  
[94HAB16RAT](#) [94HAB10T](#) [94HAB08T](#) [S-2031A](#) [S-1010A](#) [RTE1000V14](#) [RTBH31BS10ANNZP](#) [PT65501L254](#) [PT65127L254](#)  
[PT65502L508](#) [1-1825007-1](#) [1-1825007-6](#) [ND3FR16B](#) [ND3FR16P-R](#) [RTE0400N04](#) [RTE1000N14](#) [RTE1002G14](#) [RTE1002N14](#)  
[RTE1010N14](#) [1825007-1](#) [1825008-2](#)