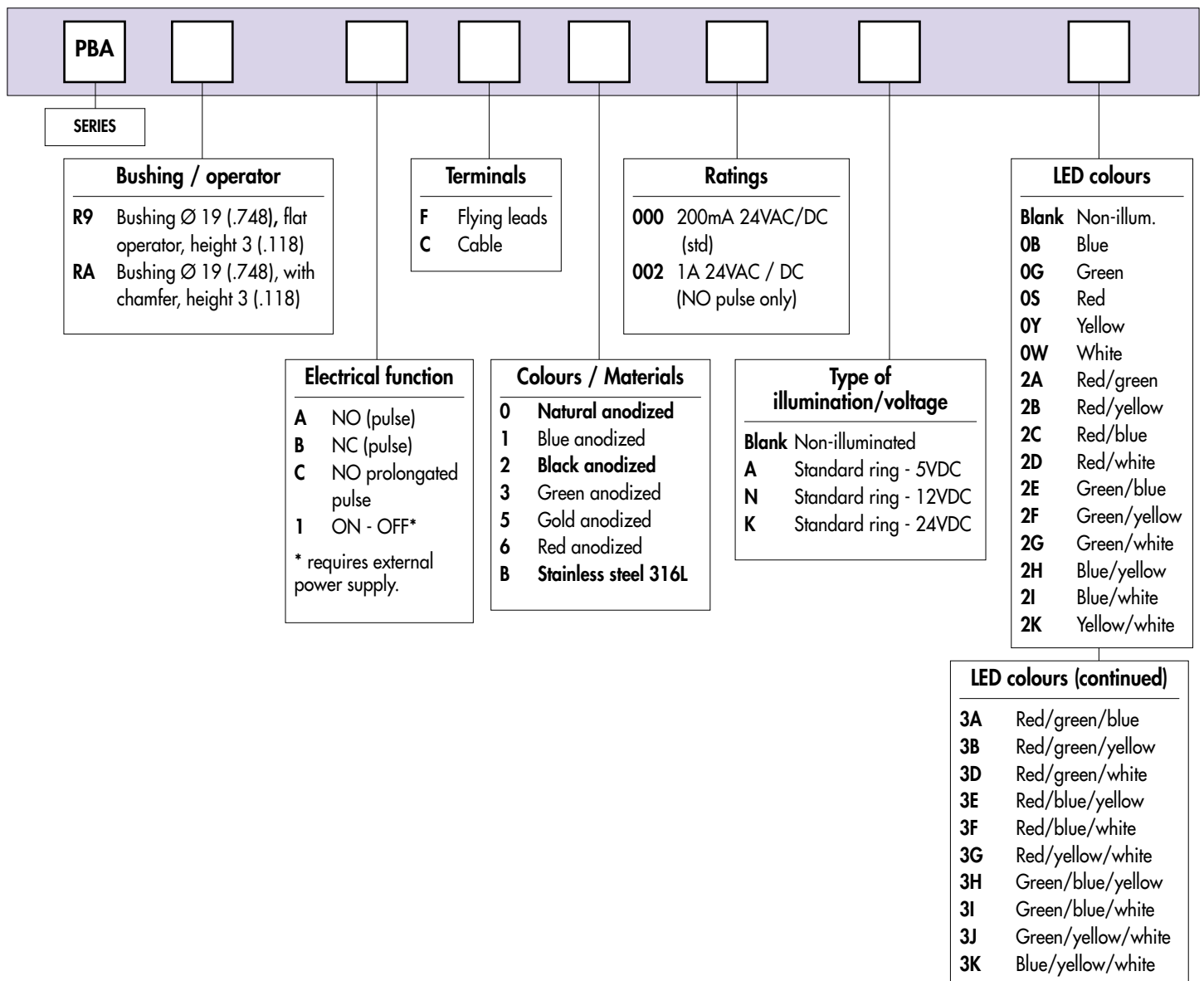


PBA series

Piezo switches Ø 19 (.748)

Overview



For options not listed above, please refer to our "Custom configurations" pages.



NOTICE : please note that not all combinations of above numbers are available. Refer to the following pages for further information.



Mounting accessories : standard hardware supplied : 1 hex nut U6450 (22 mm ac. flats) and 1 O-ring

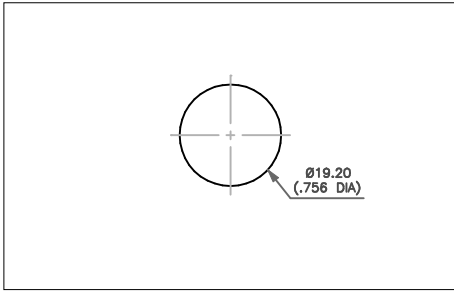


Packaging unit : 20 pieces

PBA series

Piezo switches Ø 19 (.748)

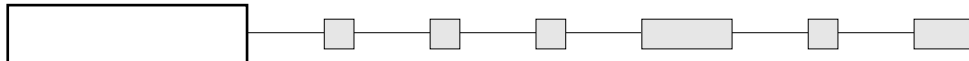
Illuminated and non-illuminated



- Operator Ø 22 mm (.866)

Shown with flying lead terminals.

MODEL
STRUCTURE



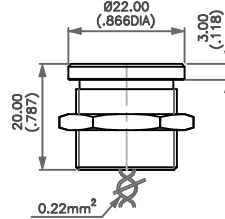
Non-illuminated - operator height 3 mm (.118)



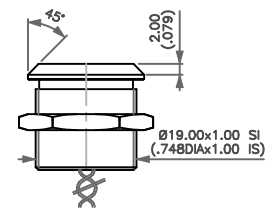
PBARAAF1000

Flat
PBAR9

With chamfer
PBARA



R9



RA

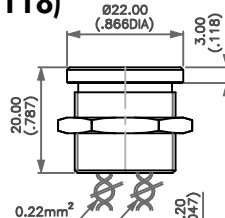
With standard illuminated ring - operator height 3 mm (.118)



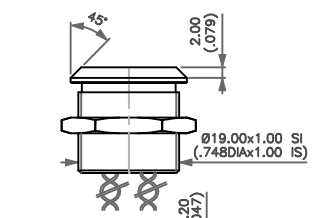
PBAR9AF0000A0S

Flat
PBAR9

With chamfer
PBARA



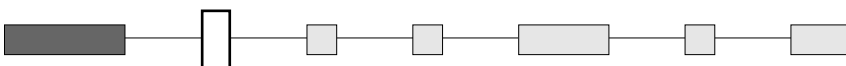
R9



RA

Wire colours : see "Electrical functions" page.

ELECTRICAL FUNCTION



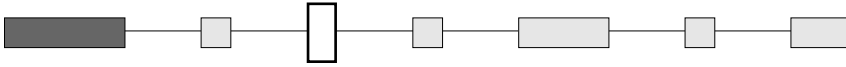
- A NO pulse
- B NC pulse
- C NO prolonged pulse
- 1 ON - OFF - Requires external power supply.

PBA series

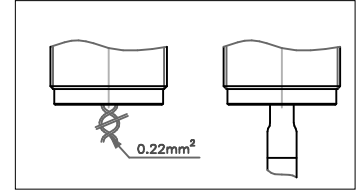
Piezo switches Ø 19 (.748)

Options

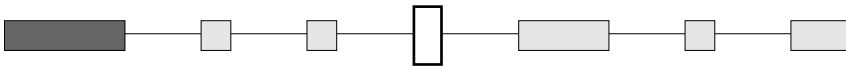
TERMINALS



F Flying leads
C Cable



CASE COLOURS / MATERIALS



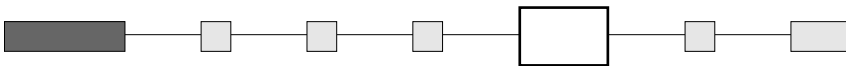
| Code | Colour |
|------|----------------------------|
| 0 | Natural anodized aluminium |
| 1 | Blue anodized aluminium |
| 2 | Black anodised aluminium |

| Code | Colour |
|------|--------------------------|
| 3 | Green anodized aluminium |
| 5 | Gold anodized aluminium |
| 6 | Red anodised aluminium |

| Code | Colour |
|------|----------------------|
| B | Stainless steel 316L |

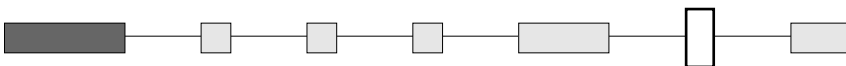


RATINGS



000 200mA 24VAC or DC (standard)
002 1A 24VAC or DC (NO pulse only)

TYPE OF ILLUMINATION / VOLTAGE



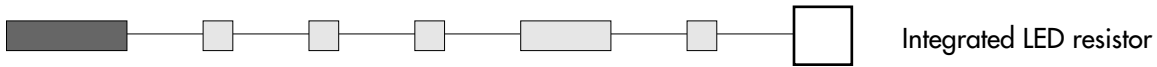
| | 5VDC | 12VDC | 24VDC |
|---|------|-------|-------|
| ○ | A | N | K |

PBA series

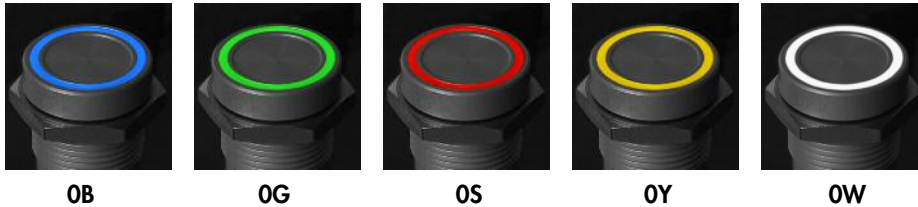
Piezo switches Ø 19 (.748)

Options

LED COLOURS



Blank : non-illuminated



Illuminated 1 LED *

OB : blue - **OG** : green - **OS** : red - **OY** : yellow - **OW** : white

Illuminated 2 LEDs

2A : red/green - **2B** : red/yellow - **2C** : red/blue - **2D** : red/white - **2E** : green/blue - **2F** : green/yellow - **2G** : green/white
2H : blue/yellow - **2I** : blue/white - **2K** : yellow/white

Illuminated 3 LEDs

3A : red/green/blue - **3B** : red/green/yellow - **3D** : red/green/white - **3E** : red/blue/yellow - **3F** : red/blue/white
3G : red/yellow/white - **3H** : green/blue/yellow - **3I** : green/blue/white - **3J** : green/yellow/white - **3K** : blue/yellow/white

* LED colour is indicated by the bottom of the product.

X-ON Electronics

Largest Supplier of Electrical and Electronic Components

Click to view similar products for [Pushbutton Switches](#) category:

Click to view products by [Apem](#) manufacturer:

Other Similar products are found below :

[8940K2012](#) [LW1L-M1C10V-A](#) [LW1L-M1C70-A](#) [LW2L-A1C20M-GD](#) [LW2L-M1C20M-A](#) [60324L](#) [M22-D-R-GB0/K11](#) [M7E-HRN2](#)
[67021K512](#) [67081K512X](#) [701PB580](#) [7190K101](#) [7199K101](#) [810K12910](#) [810KSV30B](#) [MML21EA2ADK](#) [MML21KA3ABK](#)
[MML23KA3AC05K-001](#) [MML23KW3AA01W](#) [8418K2](#) [8442K3](#) [8450K1](#) [860K11911T01A](#) [861901](#) [861K11911T01A07](#)
[861K13810T00A14](#) [861K13911](#) [8646AB6X718UL](#) [8646ABUL](#) [9001KXRK](#) [907AYY100](#) [PMHD155A1](#) [95-313.000](#)
[9533CD4+U574+U4922](#) [95-414.000](#) [99-450.837](#) [99-453.837](#) [PV3H2B0NN-341](#) [1203MRA](#) [A22NZBGANGA](#) [A22NZBMMNGA](#)
[A22NZBNANGA](#) [A22NZMPATRA](#) [A2PMA1X03EC56](#) [A3A-5123-02](#) [A3A-7140](#) [A3A-7310](#) [A3A-7340](#) [A3U-TMW-A2C-5M](#) [A595](#)