

QRM6 series

Ø6 mm rear panel mount LED indicators



DISTINCTIVE FEATURES

3 mm flush diffused LED, standard, hyper bright or clear water

Bi-color LED options

200 mm wire or pin terminations



ENVIRONMENTAL SPECIFICATIONS

- IP67 sealing option (EN60529)
- Operating Temperature Range: -40 °C to +85° C (-40 °F to +185 °F)
- Storage Temperature Range: -55 °C to +100 °C (-67 °F to +212 °F)



GENERAL SPECIFICATIONS

- Max Reverse Voltage: 5 V
- Viewing Angle: 60°
- Life Expectancy: 100,000 hours
- Max Panel Thickness: 3.5 mm
- Torque: 60 cNm

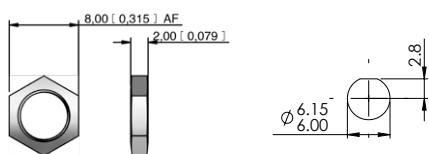


MATERIALS

- Body: Black plated brass or anodized aluminum
- Lock Washer: Spring steel
- Nut: Black plated brass
- Terminal Seal: Epoxy
- Panel Seal: Nitrile O-ring
- Wires: 24 AWG to UL1061 or UL1213 on request



MOUNTING



The company reserves the right to change specifications without notice.

LED characteristics are dependent upon environmental conditions. Therefore published data should be considered nominal and subject to variations.



QRM6 series

Ø6 mm rear panel mount LED indicators



ELECTRICAL SPECIFICATIONS

STANDARD LED INTENSITY

LED COMPONENT SPECIFICATIONS		
	MCD Output (all voltages)	Forward Voltage
HE Red	10 mcd	2.0 V
Green	8 mcd	2.2 V
Yellow	6 mcd	2.1 V
Blue	200 mcd	3.8 V
White	500 mcd	3.3 V
Bi-color (Typical) (Red/Green)	10/8 mcd	2.0 V/2.2 V

Bi-color - The color is changed by reversing the polarity of the supply voltage.

SUPER BRIGHT LED INTENSITY

LED COMPONENT SPECIFICATIONS		
	MCD Output (all voltages)	Forward Voltage
HE Red	700 mcd	2.2 V
Green	2,000 mcd	3.5 V
Yellow	8,000 mcd	2.3 V
Blue	200 mcd	3.3 V
White	350 mcd	3.3 V
Orange	500 mcd	2.2 V

HYPER BRIGHT LED INTENSITY

LED COMPONENT SPECIFICATIONS		
	MCD Output (all voltages)	Forward Voltage
HE Red	600 mcd	2.2 V
Green	350 mcd	3.2 V
Yellow	140 mcd	2.0 V

- The operating voltage must not be exceeded by more than 10% as this will result in reduced life expectancy
- Luminous intensity is measured at 20 mA on a discrete led unless otherwise stated.
- Luminous intensities and color shades of white LEDs may vary within a batch.
- Luminous intensity will be reduced with lower operating current.

Voltage	Operating Voltage	Operating Current
	(Min to Max)	(Typical All Types)
02 (No Resistor)	1.8 to 3.8 VDC	20 mA max
6 VDC	5.4 to 6.6 VDC	20 mA
12 VDC	10.8 to 13.2 VDC	20 mA
24 VDC	21.6 to 26.4 VDC	20 mA
28 VDC	25.2 to 30.8 VDC	20 mA

* Customer to supply resistor for desired operating current.

QRM6 series

Ø6 mm rear panel mount LED indicators



BUILD YOUR PART NUMBER

<div style="border: 1px solid black; padding: 2px; width: 40px; margin: 0 auto;">QRM</div> <p>.....</p> <p>SERIES</p>	<div style="border: 1px solid black; padding: 2px; width: 40px; margin: 0 auto;">—</div> <p>.....</p> <p>MOUNTING HOLE</p> <div style="border: 1px solid black; padding: 2px; width: 30px; margin: 0 auto; display: inline-block;">6</div> Ø6 mm	<div style="border: 1px solid black; padding: 2px; width: 40px; margin: 0 auto;">—</div> <p>.....</p> <p>TERMINALS</p> <table border="0" style="margin-left: auto; margin-right: auto;"> <tr> <td style="border: 1px solid black; padding: 2px; width: 20px;">4</td> Pins </tr> <tr> <td style="border: 1px solid black; padding: 2px; width: 20px;">5</td> Wires </tr> </table>	4	5	<div style="border: 1px solid black; padding: 2px; width: 40px; margin: 0 auto;">—</div> <p>.....</p> <p>BEZEL FINISH</p> <table border="0" style="margin-left: auto; margin-right: auto;"> <tr> <td style="border: 1px solid black; padding: 2px; width: 20px;">B</td> Black </tr> <tr> <td style="border: 1px solid black; padding: 2px; width: 20px;">AK</td> Anodized Dark Olive </tr> <tr> <td style="border: 1px solid black; padding: 2px; width: 20px;">AN</td> Anodized Black </tr> </table>	B	AK	AN															
4																							
5																							
B																							
AK																							
AN																							
<div style="border: 1px solid black; padding: 2px; width: 40px; margin: 0 auto;">—</div> <p>.....</p> <p>TYPE OF ILLUMINATION</p> <table border="0" style="margin-left: auto; margin-right: auto;"> <tr> <td style="border: 1px solid black; padding: 2px; width: 20px;">XX</td> Fixed Light </tr> <tr> <td style="border: 1px solid black; padding: 2px; width: 20px;">YY</td> Bi-color </tr> </table>	XX	YY	<div style="border: 1px solid black; padding: 2px; width: 40px; margin: 0 auto;">—</div> <p>.....</p> <p>LED COLOR</p> <table border="0" style="margin-left: auto; margin-right: auto;"> <tr> <td style="border: 1px solid black; padding: 2px; width: 20px;">R</td> Red </tr> <tr> <td style="border: 1px solid black; padding: 2px; width: 20px;">G</td> Green </tr> <tr> <td style="border: 1px solid black; padding: 2px; width: 20px;">Y</td> Yellow </tr> <tr> <td style="border: 1px solid black; padding: 2px; width: 20px;">B</td> Blue </tr> <tr> <td style="border: 1px solid black; padding: 2px; width: 20px;">W</td> White </tr> <tr> <td style="border: 1px solid black; padding: 2px; width: 20px;">HR</td> Hyper Bright Red </tr> <tr> <td style="border: 1px solid black; padding: 2px; width: 20px;">HG</td> Hyper Bright Green </tr> <tr> <td style="border: 1px solid black; padding: 2px; width: 20px;">HY</td> Hyper Bright Yellow </tr> <tr> <td style="border: 1px solid black; padding: 2px; width: 20px;">SR</td> Super Bright Red </tr> <tr> <td style="border: 1px solid black; padding: 2px; width: 20px;">SG</td> Super Bright Green </tr> <tr> <td style="border: 1px solid black; padding: 2px; width: 20px;">SY</td> Super Bright Yellow </tr> <tr> <td style="border: 1px solid black; padding: 2px; width: 20px;">SB</td> Super Bright Blue </tr> </table>	R	G	Y	B	W	HR	HG	HY	SR	SG	SY	SB	<div style="border: 1px solid black; padding: 2px; width: 40px; margin: 0 auto;">—</div> <p>.....</p> <p>VOLTAGE</p> <table border="0" style="margin-left: auto; margin-right: auto;"> <tr> <td style="border: 1px solid black; padding: 2px; width: 20px;">02</td> no resistor* </tr> <tr> <td style="border: 1px solid black; padding: 2px; width: 20px;">06</td> 6 VDC </tr> <tr> <td style="border: 1px solid black; padding: 2px; width: 20px;">12</td> 12 VDC </tr> <tr> <td style="border: 1px solid black; padding: 2px; width: 20px;">24</td> 24 VDC </tr> <tr> <td style="border: 1px solid black; padding: 2px; width: 20px;">28</td> 28 VDC </tr> </table> <p style="font-size: small; margin-top: 5px;">* please refer to the forward voltage in electrical specifications</p>	02	06	12	24	28	<div style="border: 1px solid black; padding: 2px; width: 40px; margin: 0 auto;">—</div> <p>.....</p> <p>SEALING</p> <table border="0" style="margin-left: auto; margin-right: auto;"> <tr> <td style="border: 1px solid black; padding: 2px; width: 20px;">E</td> IP67 (Standard) </tr> </table>	E
XX																							
YY																							
R																							
G																							
Y																							
B																							
W																							
HR																							
HG																							
HY																							
SR																							
SG																							
SY																							
SB																							
02																							
06																							
12																							
24																							
28																							
E																							



ABOUT THIS SERIES



- Notice:** please note that not all combinations of above numbers are available.
- Standard wire length is 200 mm, 24 AWG UL1061, red wire denotes Anode (+), black wire denotes Cathode (-) for other wire lengths consult APEM
 - For LEDs with alternate voltages and multi-voltage options consult APEM
 - Bi-color LEDs, by connecting the gold Faston (+) one color is produced, by reversing the supply voltage another color is produced. Bi-color are available up to 28 VDC
 - Take care when soldering (recommended solder temperature 270 °C - 2 sec)

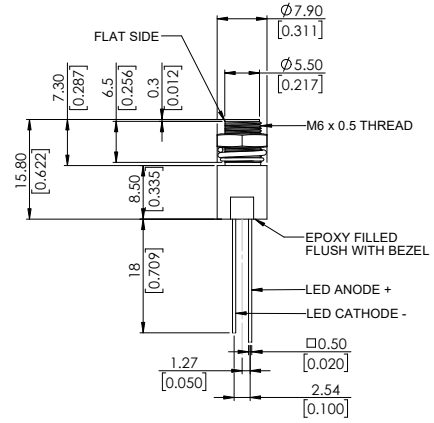
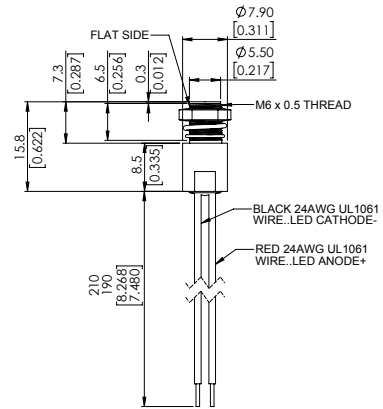
QRM6 series

Ø6 mm rear panel mount LED indicators

REAR MOUNT - WIRE TERMINALS WITH STANDARD BODY



REAR MOUNT - PINS TERMINALS WITH STANDARD BODY



X-ON Electronics

Largest Supplier of Electrical and Electronic Components

Click to view similar products for [Other Tools](#) category:

Click to view products by [Apem](#) manufacturer:

Other Similar products are found below :

[CR-05FL7--150R](#) [CR-05FL7--698K](#) [899-2-KT46](#) [899-5-KT46](#) [CR-0AFL4--332K](#) [CR-12FP4--260R](#) [CRCW04021100FRT7](#)
[CRCW04021961FRT7](#) [5800-0090](#) [CRCW04024021FRT7](#) [CRCW040254R9FRT7](#) [CRCW0603102JRT5](#) [59065-5](#) [00-8273-RDPP](#) [00-8729-](#)
[WHPP](#) [593033](#) [593058](#) [593072](#) [593564100](#) [593575](#) [593591](#) [593593](#) [011349-000](#) [CRCW08052740FRT1](#) [LUC-012S070DSM](#) [LUC-](#)
[018S070DSP](#) [599-2021-3-NME](#) [599-JJ-2021-03](#) [00-5080-YWPP](#) [5E4750/01-20R0-T/R](#) [LW1A-L1-GL](#) [LW1A-P1-GD](#) [LW1L-A1C10V-GL](#)
[LW1L-M1C70-A](#) [0202-0173](#) [00-9089-RDPP](#) [00-9300-RDPP](#) [CRCW2010331JR02](#) [01-1003W-8/32-10](#) [601-GP-08-KT39](#) [601-JJ-06](#) [601-SPB](#)
[601YSY](#) [602-JJ-03](#) [602SPB](#) [602Z](#) [603-JJ-07-FP](#) [603-JJY-04](#) [604J](#) [604-JJ-05](#)