

QRM-NV series

Ø8 and Ø14 mm rear panel mount •
NVIS LED indicators



DISTINCTIVE FEATURES

NVIS Green A, NVIS Green B, NVIS Yellow, NVIS Red, NVIS White
NVIS compliant to MIL Std 3009

200 mm wire for Ø 8 and 14 mm or rigid pin (1.00 mm) for Ø8 mm terminations



ENVIRONMENTAL SPECIFICATIONS

- IP67 sealing option (EN60529)
- Operating Temperature Range: -40 °C to +85 °C (-40 °F to +185 °F)
- Storage Temperature Range: -55 °C to +100 °C (-67 °F to +212 °F)



GENERAL SPECIFICATIONS

- Max Reverse Voltage: 5 V
- Viewing Angle: 60°
- Life Expectancy: 100,000 hours
- Max Panel Thickness: 3.5 mm
- Torque: Ø8 mm: 60 cNm
Ø14 mm: 75 cNm



ELECTRICAL SPECIFICATIONS

Voltage	Operating Voltage (Min to Max)	Operating Current (Typical All Types)
02 (No Resistor)	2.1 to 3.3 VDC	20 mA max
6 VDC	5.4 to 6.6 VDC	20 mA
12 VDC	10.8 to 13.2 VDC	20 mA
24 VDC	21.6 to 26.4 VDC	20 mA
28 VDC	25.2 to 30.8 VDC	20 mA

LED COMPONENT SPECIFICATIONS

LED Color	NVIS Radiance	NVIS Chromaticity	Dominant Wavelength	MCD Output	Forward Voltage
NW1S Green A	$NRA \leq 1.7eE-10 @ 0.1fL$	$r \leq .037$	530 nm	150 mcd	3.3 V
NW1S Green B	$NRA \leq 1.7eE-10 @ 0.1fL$	$r \leq .057$	555 nm	150 mcd	3.3 V
NW1S Yellow Class A	$5.0E-8 \leq NRA \leq 1.5E-7 @ 15fL$	$r \leq .083$	-	150 mcd	3.3V
NW1S Yellow Class B	$4.7E-8 \leq NRA \leq 1.47E-7 @ 15fL$	$r \leq 0.83$	585 nm	150 mcd	3.3 V
NW1S Red	$4.7E-8 \leq NRA \leq 1.4E-7 @ 15 fL$	$r \leq .060$	605 nm	110 mcd	2.1 V
NW1S White	$NRA \leq 1.0E-9 @ 0.1fL$	$r \leq .40$	(x).33 (y).33	150 mcd	3.3 V

The company reserves the right to change specifications without notice.

LED characteristics are dependent upon environmental conditions. Therefore published data should be considered nominal and subject to variations.



QRM-NV series

Ø8 and Ø14 mm rear panel mount • NVIS LED indicators



ELECTRICAL SPECIFICATIONS (CONTINUED)

- The operating voltage must not be exceeded by more than 10% as this will result in reduced life expectancy
- Luminous intensity is measured at 20 mA on a discrete led unless otherwise stated.
- Luminous intensities and color shades of white LEDs may vary within a batch.
- Luminous intensity will be reduced with lower operating current.



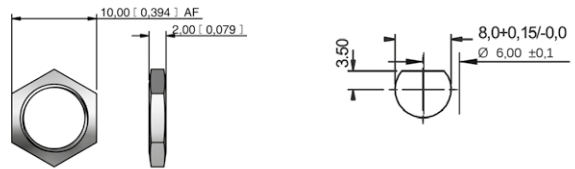
MATERIALS

- Body: Black plated brass or anodized aluminum
- Lock Washer: Spring steel
- Nut: Black plated brass
- Terminal Seal: Epoxy
- Panel Seal: Nitrile O-ring
- Wires: **Ø8 mm:** 24 AWG - Approved to UL1213
Ø14 mm: 22A WG - Approved to UL1007

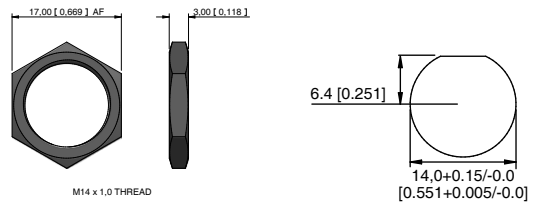


MOUNTING

Ø8 MM



Ø14 MM

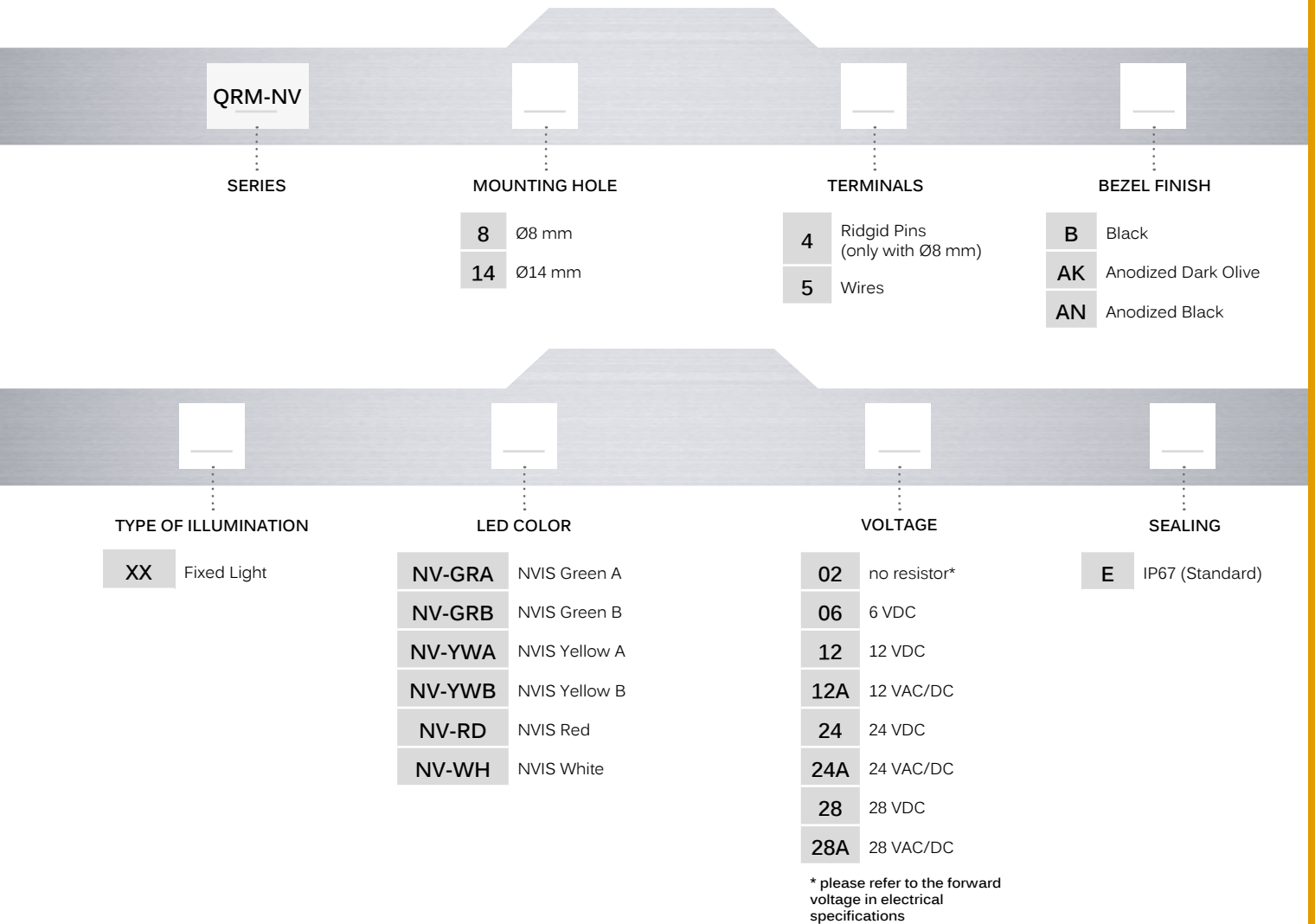


QRM-NV series

Ø8 and Ø14 mm rear panel mount • NVIS LED indicators



BUILD YOUR PART NUMBER



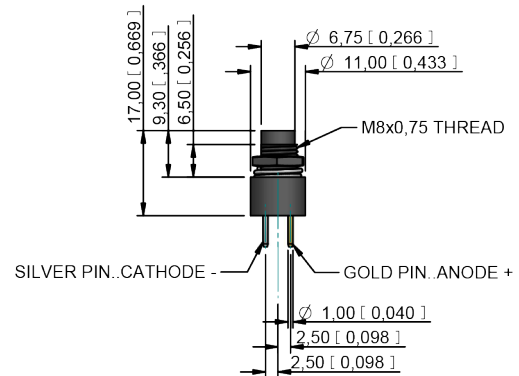
ABOUT THIS SERIES

- ⚠ **Notice:** please note that not all combinations of above numbers are available.
- Standard wire length is 200 mm, 24 AWG UL1061, red wire denotes Anode (+), black wire denotes Cathode (-) for other wire lengths consult APEM.
 - For LEDs with alternate voltages and multi-voltage options consult APEM.
 - Take care when soldering (recommended solder temperature 270°C - 2 sec).
 - Suitable for the toughest environment and compliant to MIL standard specification

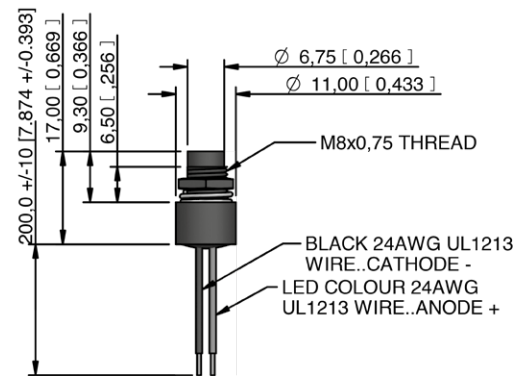
QRM-NV series

Ø8 and Ø14 mm rear panel mount •
NVIS LED indicators

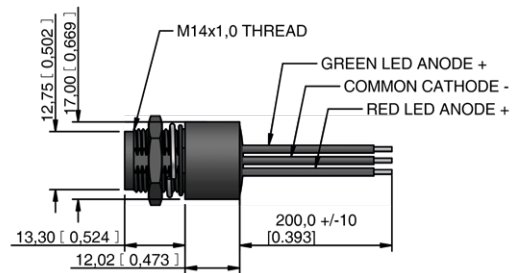
Ø8 MM REAR MOUNT - PINS TERMINALS



Ø8 MM REAR MOUNT - WIRES TERMINALS



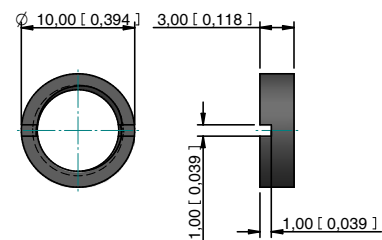
Ø14 MM REAR MOUNT - WIRES TERMINALS



HARDWARE - CYLINDRICAL DRESS NUTS - FOR Ø8 MM ONLY



P/N : AUK0001



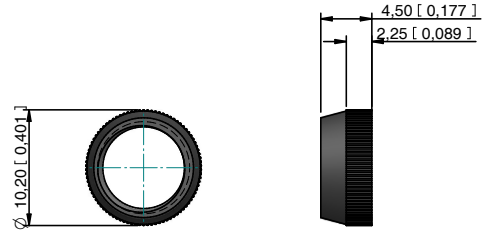
QRM-NV series

Ø8 and Ø14 mm rear panel mount •
NVIS LED indicators

HARDWARE - KNURLED DRESS NUTS
- FOR Ø8 MM ONLY



P/N : AUK0002



X-ON Electronics

Largest Supplier of Electrical and Electronic Components

Click to view similar products for [LED Panel Mount Indicators](#) category:

Click to view products by [Apem](#) manufacturer:

Other Similar products are found below :

[607-3232-140F](#) [821-0331-503](#) [FL2870C8R](#) [FL2950WL7B](#) [FL2950WL8G](#) [FL589WL8R](#) [FL67C8R](#) [H8630FBBA3](#) [NL177WL2A](#)
[NL177WL3G](#) [NL276C2A](#) [NL2950BWL3G](#) [NL589WL2R](#) [NL67C2C](#) [NL67C3R](#) [C480AABG3](#) [PB22BM41K](#) [PB22SIM40Y](#)
[PB22SKRS31KC](#) [L32R-R2-2311](#) [L3353-MWRG](#) [L39UR-R24-2111](#) [L58D-G2-W](#) [L58D-Y2-W](#) [L59D-R12-W](#) [L59UD-R12-W](#) [L625DG](#)
[L625DR](#) [LE177WL39007](#) [LH1048BSWL3702](#) [LH1048BWL3702](#) [LH382A](#) [LH677G](#) [LHM628A](#) [FL276WL7R](#) [FL2950BWL7R](#)
[FL2950WL7R](#) [FL2950WL8R](#) [FL2950WL8R-12](#) [FL2951WL8G](#) [FL2951WL8R](#) [FL589C7R](#) [FL67WL8G](#) [MPC5BCW18.0](#) [556-1605-808F](#)
[556-1705-809F](#) [556-3008-839F](#) [558-0201-818F](#) [559-0001-813F](#) [559-1301-801F](#)