

# SP series

Washable snap-action pushbutton switches



## DISTINCTIVE FEATURES

Process sealed

Front and rear sealing

Process compatible (plain bushing models)

Wave solderable

Washable



## ELECTRICAL SPECIFICATIONS

- Max. current/voltage rating with resistive load :
  - gold plated brass contacts : 100 mA 30 VDC
  - silver or gold plated silver contacts : 1 A 30 VDC
- Initial contact resistance : 50 mΩ max.
- Insulation resistance : 1,000 MΩ min.
- Dielectric strength : 1,000 Vrms 50 Hz min.
- Electrical life : 60,000 cycles



## ENVIRONMENTAL SPECIFICATIONS

- Operating temperature : -20 °C to +85 °C (-4 °F to +185 °F)
- Storage temperature : -40 °C to +85 °C (-40 °F to +185 °F)
- Moisture : The insulating materials employed and the complete seal permit the switches to withstand a 56 days moisture test (IEC 68-2-3).
- Solderability : The switches are tested at 235°C according to IEC 68-2-20 after accelerated aging.



## GENERAL SPECIFICATIONS

- Torque : 0.25 Nm (.18 Ft.lb) applied to nut (threaded bushing)
- Total travel : 0.50 mm (.019)
- Mechanical strength : Terminals are strengthened by a bracket or a ground plate ensuring the rigidity of the switch on the board. Actuator strength is 10 N max.
- Soldering - thermal shock (plain bushing models only) :  
The switches are especially designed for flow soldering at 260 °C (500 °F) during 5 seconds owing to high temperature polymer parts.
- Iron soldering (threaded bushing models) : 300 °C (572 °F) max., 5 seconds max.

The company reserves the right to change specifications without notice.



# SP series

Washable snap-action pushbutton switches



## MATERIALS

- Case and cover : UL94-V0, polyamide, glass filled or PES
- Actuator : polyamide, glass filled
- Contacts
  - 0 : brass, gold plated
  - 1 : silver
  - 2 : silver, gold plated
- Terminal seal : epoxy

APEM products may be recycled at end-of-life for the re-claiming of valuable metal components.

## AGENCY APPROVAL



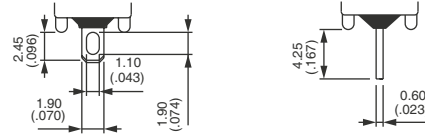
1 A 120 VAC

**Availability** : all models with silver or gold plated silver contacts.

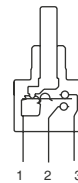
**Marking** : to order switches marked UL , complete appropriate box of ordering format.



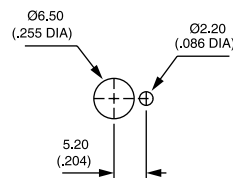
## TERMINALS



## ELECTRICAL FUNCTIONS

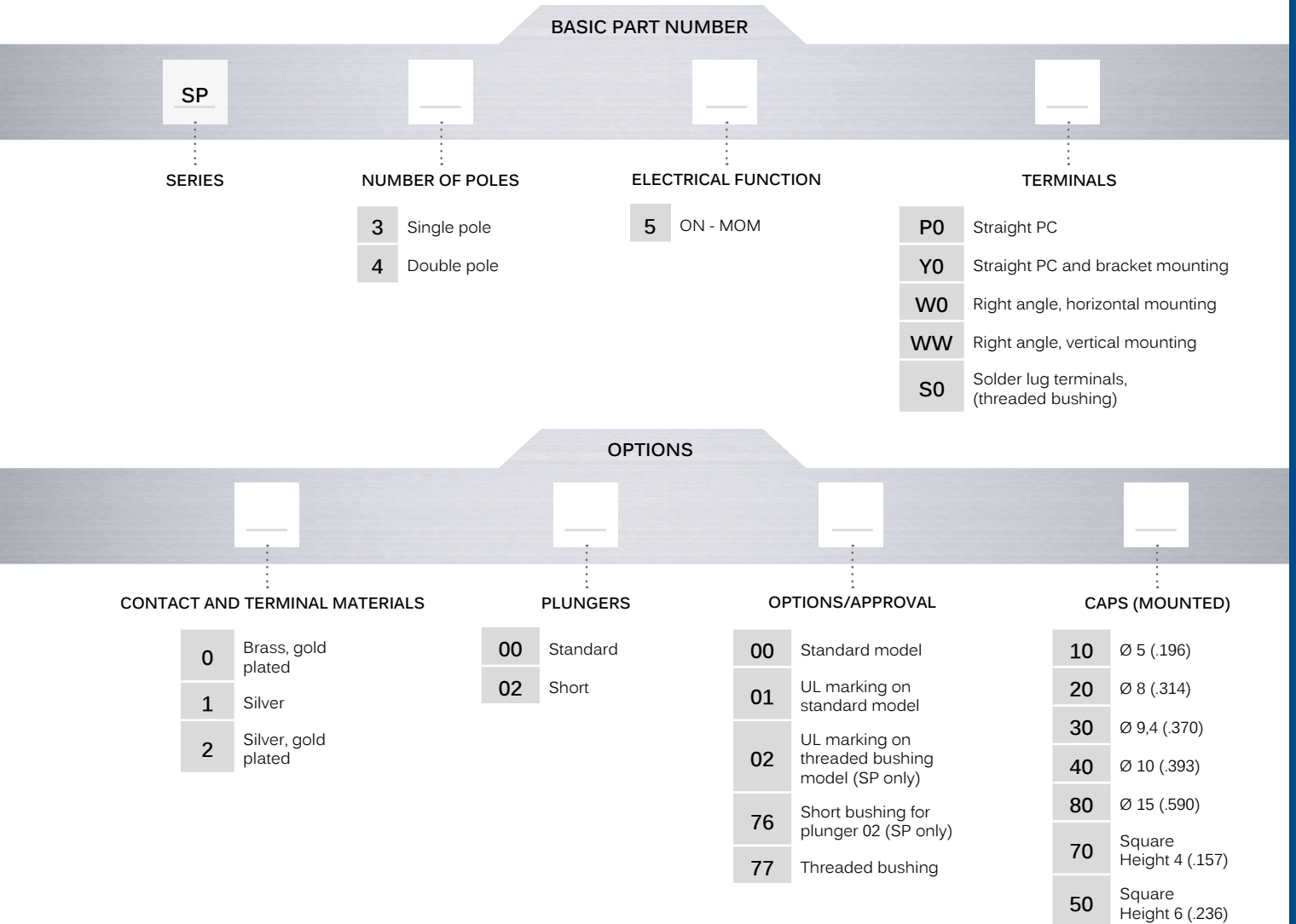


## PANEL CUT-OUT





### BUILD YOUR PART NUMBER



### ABOUT THIS SERIES

On the following pages, you will find successively basic part numbers of switches and options in the same order as in above chart.



**Notice :** please note that not all combinations of above numbers are available. Refer to the following pages for further information.



**Mounting accessories :** Standard hardware supplied with all models with Ø 6.35 (1/4) threaded bushing : 2 hex nuts 8 mm (.314) across flats, 1 locking ring and 1 lockwasher. Standard and special hardware available is presented in the "Accessories" section of website.

# SP series

Washable snap-action pushbutton switches

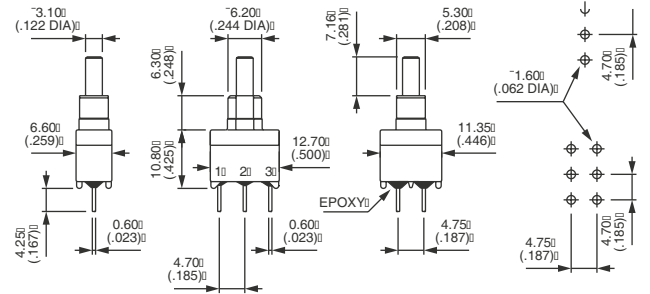
## PLAIN BUSHING - STRAIGHT PC TERMINALS



Single pole	ON	MOM
<b>SP35P0... 00</b>		
Double pole	ON	MOM
<b>SP45P0... 00</b>		



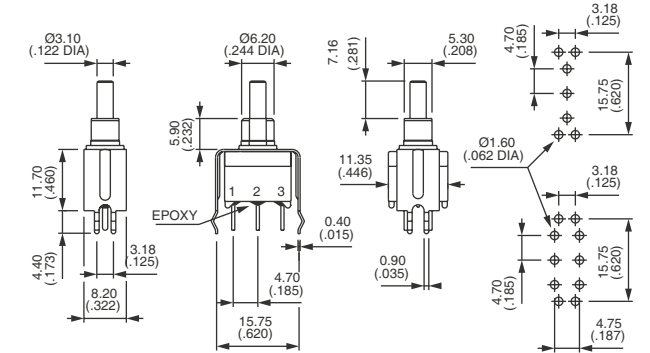
Shown with standard plunger



## PLAIN BUSHING - BRACKET MOUNTING



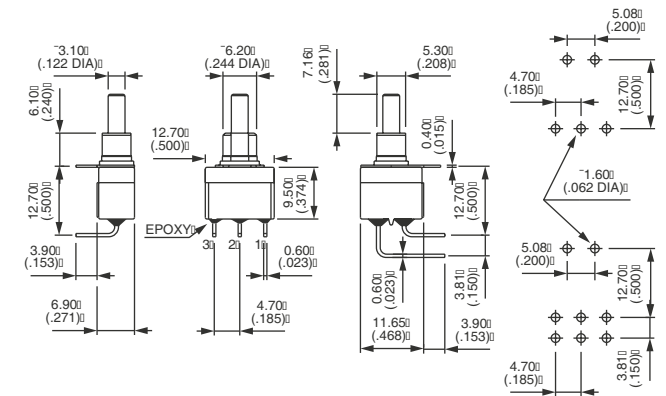
Single pole	ON	MOM
<b>SP35Y0... 00</b>		
Double pole	ON	MOM
<b>SP45Y0... 00</b>		



## PLAIN BUSHING - RIGHT ANGLE TERMINALS HORIZONTAL



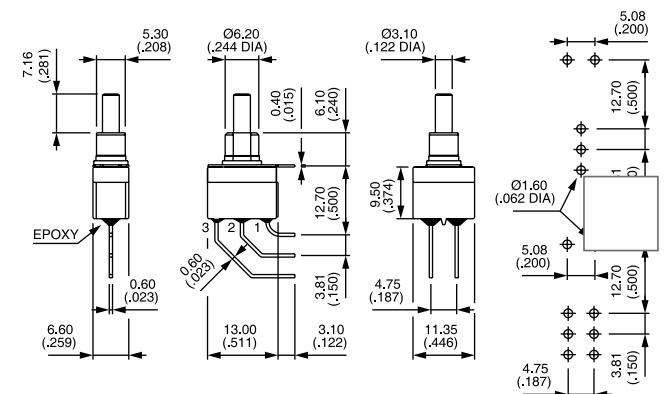
Single pole	ON	MOM
<b>SP35W0... 00</b>		
Double pole	ON	MOM
<b>SP45W0... 00</b>		



## PLAIN BUSHING - RIGHT ANGLE TERMINALS VERTICAL



Single pole	ON	MOM
<b>SP35WW... 00</b>		
Double pole	ON	MOM
<b>SP45WW... 00</b>		



Washable snap-action pushbutton switches

## THREADED BUSHING - SOLDER LUG TERMINALS



Single pole  
SP35S0... 77



1-3



1-2

ON

MOM

## THREADED BUSHING - STRAIGHT PC TERMINALS



Single pole  
SP35P0... 77



1-3

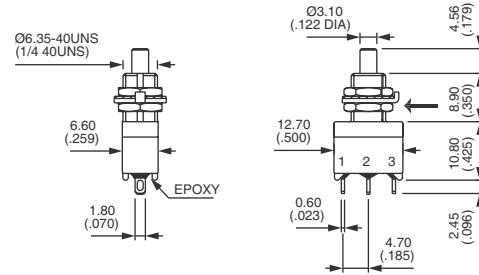


1-2

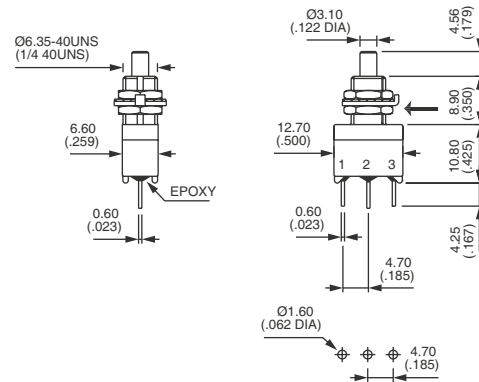
ON

MOM

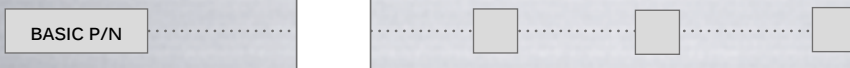
Shown with standard plunger  
→ KEYWAY



→ KEYWAY



### CONTACT & TERMINAL MATERIALS

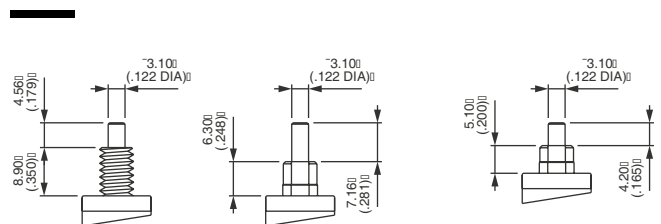


- 0 Brass, gold plated (standard)
- 1 Silver
- 2 Silver, gold plated

### PLUNGERS



- 00 Standard plunger
- 02 Short (for models with plain bushing, single pole only) Order with option 76 below.



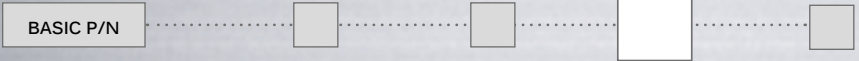
00

02

# SP series

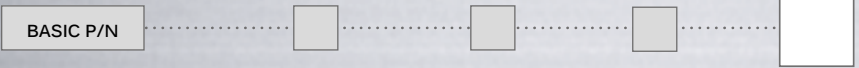
Washable snap-action pushbutton switches

### OPTIONS / AGENCY APPROVAL



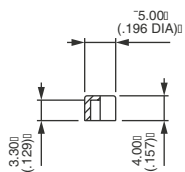
- 00 Standard model
- 01 UL marking for standard model
- 02 UL marking for threaded bushing model (single pole models only)
- 76 Short plain bushing for 02 plunger (single pole models only)
- 77 Threaded bushing (included in basic part numbers on previous page)

### CAPS

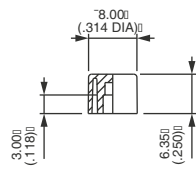


- |  |   |
|--|---|
| <b>Blank</b> Without cap                             | For cap colors, replace «0» with number : |
| 10 P/N U2400   | 1 Blue                                    |
| 20 P/N U2510   | 1/4 Dark blue                             |
| 30 P/N U2130   | 2 Black                                   |
| 40 Standard - P/N U2900                              | 3 Green                                   |
| 50 Square - P/N U2340. Not available with plunger 02 | 4 Grey                                    |
| 70 Square - P/N U910                                 | 5 Yellow                                  |
| 80 P/N U3400. Not available with plunger 02          | 6 Red                                     |
|  | 7 Ivory                                   |
|  | 7/1 White                                 |
|  | 9 Orange                                  |

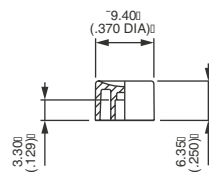
To order caps separately, use their P/N (U...) (for threaded bushing order only separately).



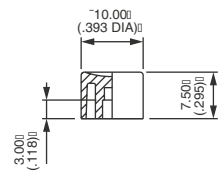
10



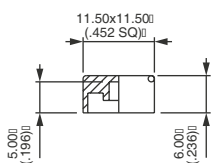
20



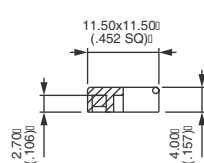
30



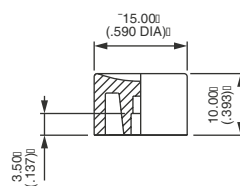
40



50



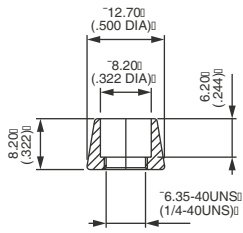
70



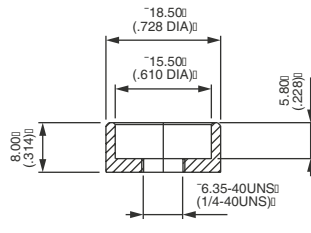
80

### DRESS NUT

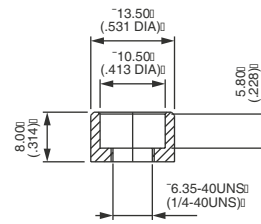
**For threaded bushing models only**  
 Dress nuts are to be ordered separately.



**U1636**  
 For cap U2510



**U825**  
 For cap U3400



**U840**  
 For cap U2900

## X-ON Electronics

Largest Supplier of Electrical and Electronic Components

*Click to view similar products for [Pushbutton Switches](#) category:*

*Click to view products by [Apem](#) manufacturer:*

Other Similar products are found below :

[8940K2012](#) [LW1L-M1C10V-A](#) [LW1L-M1C70-A](#) [LW2L-A1C20M-GD](#) [LW2L-M1C20M-A](#) [60324L](#) [M22-D-R-GB0/K11](#) [M7E-HRN2](#)  
[67021K512](#) [67081K512X](#) [701PB580](#) [7190K101](#) [7199K101](#) [810K12910](#) [810KSV30B](#) [MML21EA2ADK](#) [MML21KA3ABK](#)  
[MML23KA3AC05K-001](#) [MML23KW3AA01W](#) [8418K2](#) [8442K3](#) [8450K1](#) [860K11911T01A](#) [861901](#) [861K11911T01A07](#)  
[861K13810T00A14](#) [861K13911](#) [8646AB6X718UL](#) [8646ABUL](#) [9001KXRK](#) [907AYY100](#) [PMHD155A1](#) [95-313.000](#)  
[9533CD4+U574+U4922](#) [95-414.000](#) [99-450.837](#) [99-453.837](#) [PV3H2B0NN-341](#) [1203MRA](#) [A22NZBGANGA](#) [A22NZBMMNGA](#)  
[A22NZBNANGA](#) [A22NZMPATRA](#) [A2PMA1X03EC56](#) [A3A-5123-02](#) [A3A-7140](#) [A3A-7310](#) [A3A-7340](#) [A3U-TMW-A2C-5M](#) [A595](#)